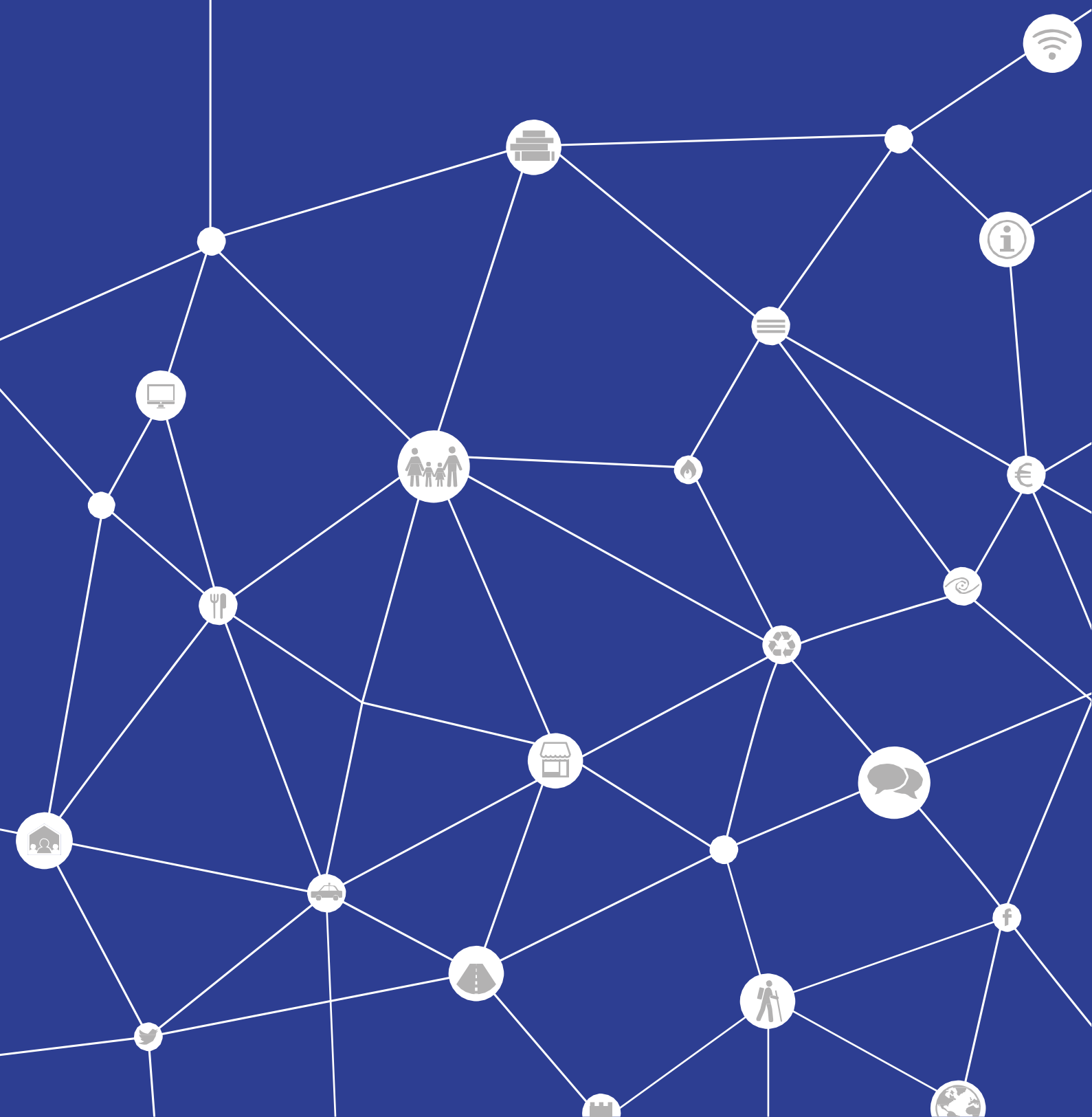




Comhairle Cathrach & Contae Phort Láirge  
Waterford City & County Council

## ANNUAL REPORT 2016



## FOREWORD



As Mayor of Waterford City and County Council, I am delighted to present the Annual Report for 2016, a year which boasts many positives for Waterford. Waterford City and County Council plays a huge role in the development and success of our City and County. We are beginning to see noticeable movement in terms of our capital projects and we are well placed as the Gateway City and largest urban centre in the South East to see continued success in the many areas we are involved in. Waterford, like anywhere in the world, still has a number of challenges that we must overcome. I am confident that if we continue with the pro-active approach we have taken in the first three years of this amalgamated authority, that Waterford and its people will see further benefits in the present and the near future.

I would also like to pay tribute to CE Michael Walsh, the full executive team, council employees and all elected representatives for the support they have shown me in my role as Mayor and your unwavering dedication to this City and County.

**Cllr. Adam Gary Wyse**  
**Mayor of the City and County of Waterford**



As we continue to develop the amalgamated authority, the elected members and employees of Waterford City and County Council, work together to achieve a modern, efficient, local authority serving the people of Waterford. In what is still a challenging economic and resource climate, we continue to deliver quality services across the range of our activities. This report is compiled to give particulars of the activities of Waterford City and County Council for the year 2016.

Some of the highlights in the public eye were, achieving SDZ designation for the North Quays, the twinning of Waterford with the L.E. James Joyce and the Viking Triangle winning the 'Great Place' category at the Urbanisation Awards in London. Of course, the continued development of the Greenway, which promises so much to Waterford as a whole, and Mount Congreve as a worldclass visitor attraction, are near conclusion.

Waterford can look back on 2016 with pride and a sense of achievement and look forward to 2017 with anticipation of better things to come.

**Michael Walsh**  
**Chief Executive**  
**Waterford City & County Council**

# TABLE OF CONTENTS

## YOUR COUNCIL

Mayors and Cathaoirlioh	2
Plenary Council	3
Principal officers	4
Retirees and Leavers	5

## PEOPLE AND COMMUNITIES

Corporate	7
Community and Sports	12
Housing	14
Environmental Services	19
Library Services	20
Information Services	21
Strategic Policy Committees	22

## CREATING A GROWTH CULTURE

Economic Development	25
Arts	29
Planning	31
Strategic Policy Committees	33

## A STRONG FOUNDATION

Property Management	36
Emergency Services	39
Roads, Transportation and Safety	42
Strategic Policy Committees	43

## OUR FINANCES

Annual Financial Statement	45
Councillors' Expenses	46
Councillors' Attendance	47



ANNUAL REPORT 2016  
**YOUR COUNCIL**



## CHAPTER SECTION

## MAYORS AND CATHAORLIGH

**Cllr. Adam Gary Wyse**

Mayor of Waterford City  
and County Council

**Cllr. John Carey**

Deputy Mayor of  
Waterford City and  
County Council

**Cllr. John Hearne**

Mayor of the  
Metropolitan District  
of Waterford

**Cllr. Jim Griffin**

Deputy Mayor of the  
Metropolitan District of  
Waterford

**Cllr. Damien Geoghegan**

Cathaoirleach of  
Dungarvan and Lismore  
District

**Cllr. Declan Doocey**

Leas Cathaoirleach of  
Dungarvan and Lismore  
District

**Cllr. John O'Leary**

Cathaoirleach of  
Comeragh District

**Cllr. Ray Murphy**

Leas Cathaoirleach of  
Comeragh District

## CHAPTER SECTION

## PLENARY COUNCIL



Councillor	Electoral Area	Councillor	Electoral Area
Cllr. Liam Brazil (FG)	Comeragh	Cllr. Jason Murphy (FF)	Waterford City South
Cllr. Breda Brennan (SF)	Waterford City South	Cllr. Ray Murphy (FF)	Comeragh
Cllr. John Carey (FG)	Waterford City East	Cllr. Pat Nugent (FG)	Dungarvan & Lismore
Cllr. Declan Clune (SF)	Comeragh	Cllr. Seamus O'Donnell (Ind)	Dungarvan & Lismore
Cllr. Joe Conway (Ind)	Tramore & Wfd City West	Cllr. John O'Leary (FF)	Comeragh
Cllr. Tom Cronin (FF)	Dungarvan & Lismore	Cllr. Cha O'Neill (Ind)	Waterford City South
Cllr. John Cummins (FG)	Waterford City South	Cllr. Michael JO'Ryan (FF)	Comeragh
Cllr. Davy Daniels (Ind)	Waterford City East	Cllr. Lola O'Sullivan (FG)	Tramore & Wfd City West
Cllr. Declan Doocey (FG)	Comeragh	Cllr. Seanie Power (FG)	Comeragh
Cllr. Pat Fitzgerald (SF)	Waterford City East	Cllr. John Pratt (Lab))	Dungarvan & Lismore
Cllr. Damien Geoghegan (FG)	Dungarvan & Lismore	Cllr. Eamon Quinlan (FF)	Tramore & Wfd City West
Cllr. Jim Griffin (SF)	Tramore & Wfd City West	Cllr. Seán Reinhardt (Ind))	Waterford City South
Cllr. Blaise Hannigan (Ind)	Tramore & Wfd City West	Cllr. Mary Roche (Ind)	Waterford City East
Cllr. John Hearne (SF)	Waterford City South	Cllr. James Tobin (FF)	Dungarvan & Lismore
Cllr. Joe Kelly (Ind)	Tramore & Wfd City West	Cllr. Siobhan Whelan (SF)	Dungarvan & Lismore
Cllr. Eddie Mulligan (FF)	Waterford City East	Cllr. Adam Gary Wyse (FF)	Waterford City East

## PRINCIPAL OFFICERS

### Chief Executive

Michael Walsh	Chief Executive
---------------	-----------------

### Director of Services

Fergus Galvin	Roads, Water and Environment
Ivan Grimes	Housing, Community and Emergency Services
John Murphy	Head of Finance
Lar Power	Deputy Chief Executive Economic Development and Planning
Michael Quinn	Corporate, Culture HR and Information Systems

### Senior Officers

Jane Cantwell	City and County Librarian
John Croke	Senior Resident Engineer Roads
Niall Curtin	Chief Fire Officer
Paul Daly	Senior Engineer Economic Development
Billy Duggan	SEO Economic Development
Ian Fitzpatrick	SEO Procurement
Catherine Horan	Head of Information Systems
Carmel Hourigan	SEO Human Resources
Gabriel Hynes	Senior Engineer Roads
Paul Johnston	Senior Resident Engineer Housing
Rupert Maddock	Senior Architect
Pat McCarthy	Senior Engineer Water
Eamonn McEneaney	SEO Waterford Treasures
Raymond Moloney	SEO Environment
Donal Murphy	Financial Accountant
Bryan O'Kane	Management Accountant
Jim O'Mahony	Senior Planner
Eddie Ruane	SEO Corporate
Joe Sullivan	SEO Housing
Don Tuohy	SEO Community
Richard Walsh	SEO Economic Development

## PEOPLE WHO RETIRED OR LEFT IN 2016

### Retirees

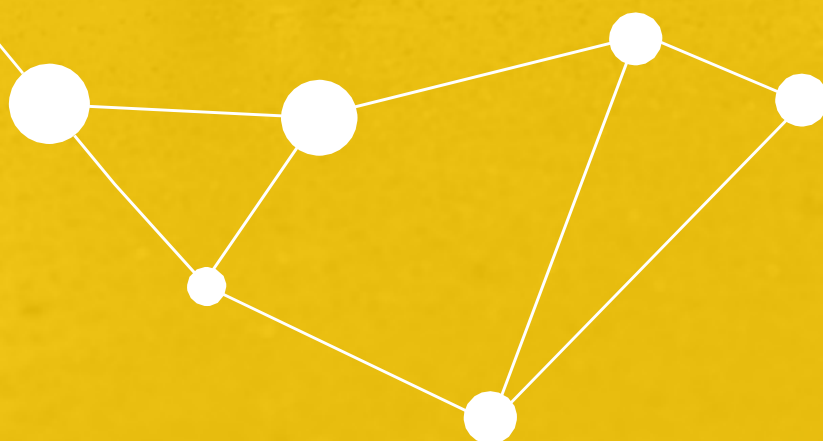
Elizabeth O'Connor	Clerical Officer
Anthony Butler	Storeman
Terence Carroll	Fire Fighter
James Casey	Craftsman
Vivianne Doole	Environmental Inspector
Donal Fennessy	Semi-skilled
Stephen Grant	General Operative
John Grey	Driver
Thomas Halligan	Driver
Paul Hanlon	General Operative
Margaret Howlin	Receptionist
Paul Kelly	Water Caretaker
Colin Kennedy	Fire Fighter
P.J. Kindregan	Senior engineer (A)
Pauline Lenihan	Clerical Officer
Ray Mannix	Senior Engineer
Timothy McCall	Senior Executive Technician
Patsy McDonald	Water Inspector
Anthony McElroy	Head of Information Systems
John McGovern	Water Caretaker
Pat Moore	Water Caretaker
Edward Power	Driver
Mary Roche	School Warden
Joe Sheehan	Driver
Raymond Stephens	General Operative
Patrick Tutty	Driver
Oliver Walsh	Dog Warden
Andrew Weldon	Water Caretaker

### Leavers

Rachel Cassidy	IPA Graduate Programme
Mary Houlihan	Senior Staff Officer
Philip Murray	Assistant Engineer
Padraig O'Shea	Assistant Planner
Patrick O'Sullivan	Assistant Planner
Alan Power	Retained Fire Fighter
Thomas Rogers	Executive Engineer
Ross Wade	Retained Fire Fighter



ANNUAL REPORT 2016  
PEOPLE AND COMMUNITIES



## CORPORATE

## CUSTOMER SERVICES &amp; EDUCATION



## JUNIOR ACHIEVEMENT:

In keeping with Waterford City and County Council's role in educating young people about Waterford and how they can contribute to making Waterford a better place for everyone to live; a Junior Achievement: Our City Workshop was arranged for students from St Stephen's (BNS) De La Salle and Presentation Primary School in the City and St. Mary's in Dungarvan.



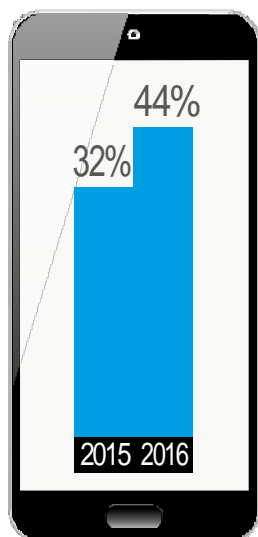
## HIGHER EDUCATION GRANTS



## CORPORATE

## CORPORATE COMMUNICATIONS

## WEBSITE



Waterford City and County Council's Facebook page received 1601 new likes in 2016 (5% increase in new likes in 2015). The average engagement rate of posts at 6%.



@waterfordcouncil is Waterford City and County Council's Twitter handle. In 2015 @waterfordcouncil tweeted 1311 times which gave a daily impressions average of 2,687 and a 2% average engagement rate. Over the year there were 1.6k retweets and 1.5k link clicks from our tweets



No. of Page Views

1,216,471



Increase on 2015

42%



Unique Visitors

316,007



Mobile Visitors

44%



32% in 2015

Most Popular pages

1. HOMEPAGE



2. CHOICE BASED LETTINGS



3. ONLINE PLANNING ENQUIRIES



4. OUR SERVICES

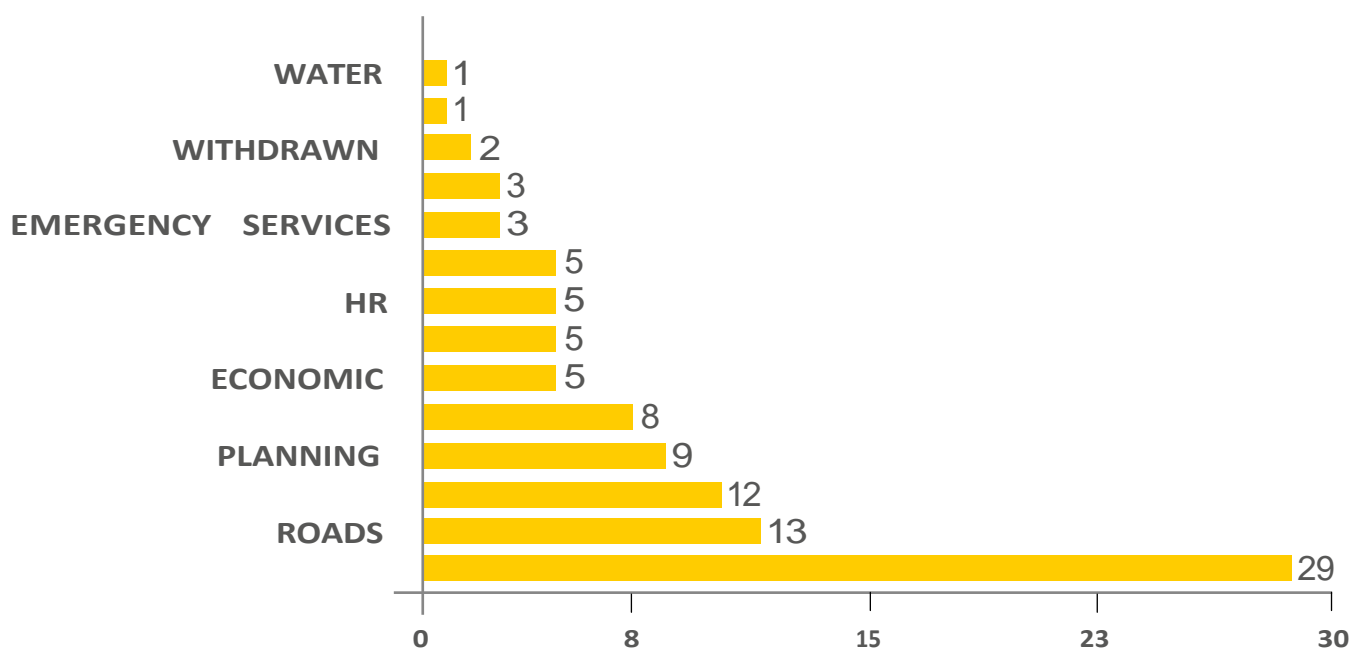
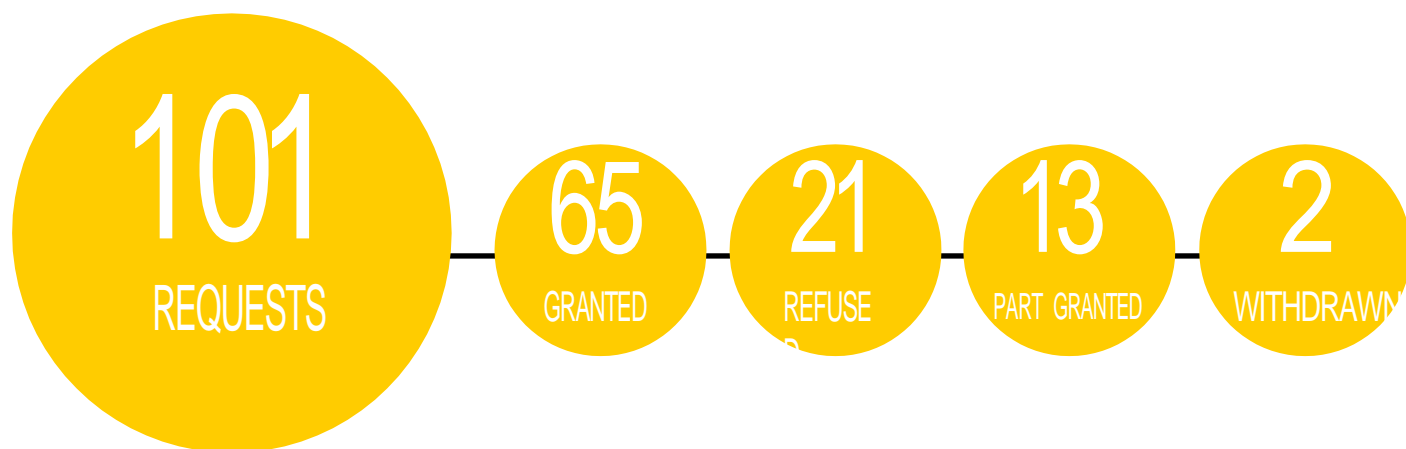


5. PLANNING HOMEPAGE



## CORPORATE

## FREEDOM OF INFORMATION

OFFICE OF THE  
INFORMATION  
COMMISSIONER

## CORPORATE

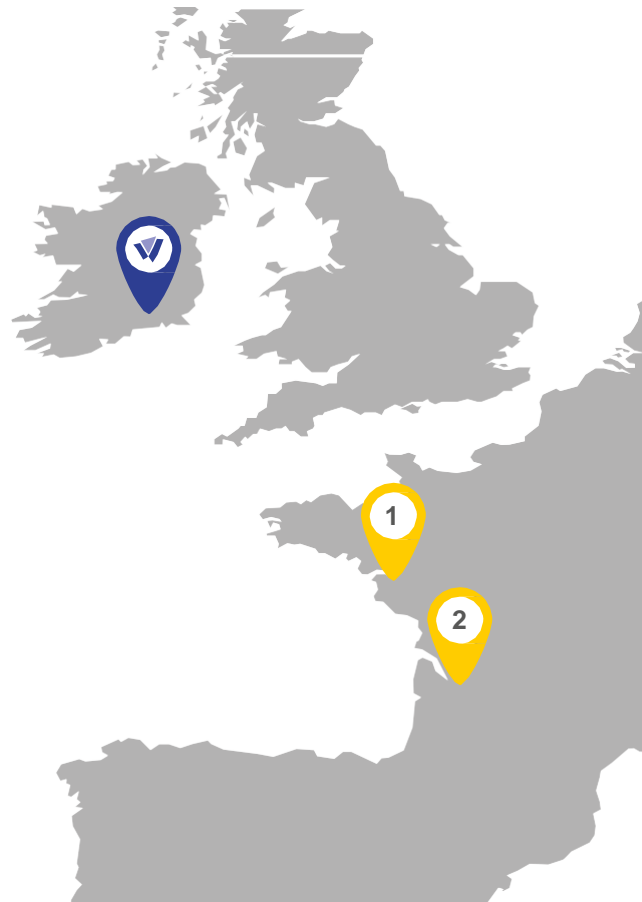
## RESOLVED

Finance	Case closed as not Upheld
Housing	Decision not reached
Housing	Case closed as assistance provided
Housing	Decision not reached
Planning	Decision not reached
Planning	Case closed as assistance provided
Planning	Case closed as assistance provided
Roads	Decision not reached
Roads	Decision not reached

## CORPORATE

## TOWN TWINNINGS 2016

DETAILS OF ACTIVITIES AND SPEND FOR ANNUAL REPORT

FUNDING  
AMOUNT

€1,814

€6,236

€6,266

NO COST

TWIN TOWN

ST. HERBLAIN

TRAMORE &  
CADUAJAC

BOSTON / ERIE

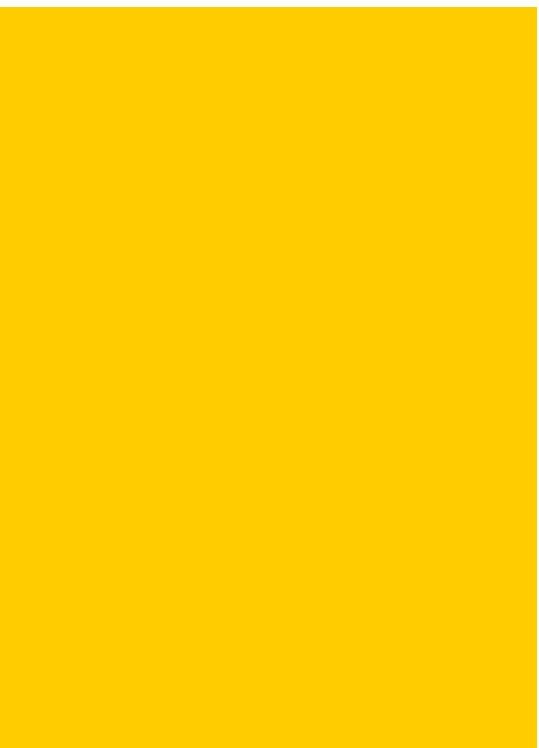
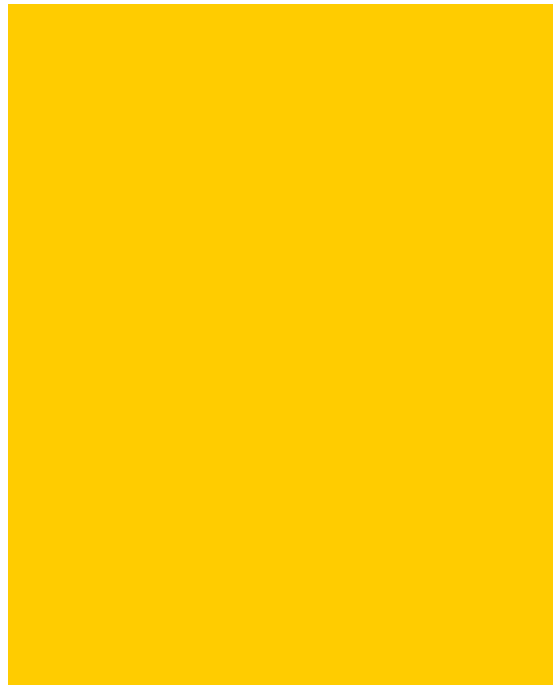
NEWFOUNDLAND  
/ LABRADORPURPOSE  
OF FUNDING

Hosting group from St. Herblain, a group from Ecole Jules Riffel, French/Irish Night -part of 1916 celebrations

Visit from group of Teachers from Cadajac, council rep visit to Cadajac/ Bordeaux, visitors from Martillac

Attendance of Council delegation in April 2016 for Boston Marathon Tribute Memorial Events

Hosting group from Newfoundland - Dungarvan- August 2016-11th Ireland Newfoundland Festival



## COMMUNITY AND SPORTS SERVICES

### PERFORMANCE INDICATORS

- OBJECTIVE -  
MAINTAIN AND IMPROVE  
ON 2015 OUTCOME

### NATIONAL SERVICE INDICATOR

NO. OF VISITORS TO LA OPERATED FACILITIES

2015 OUTTURN 134,395

2016 TARGETS 139,771

2016 OUTTURN 127,548

PERCENTAGE OF LOCAL  
SCHOOLS AND YOUTH  
GROUPS INVOLVED IN  
COMHAIRLENAN-ÓG



### SERVICE INDICATORS

NO. OF GROUPS REGISTERED WITH PPN

2016 TARGETS 520

2016 OUTTURN 553

### COMMUNITY SERVICES



Support was provided for communities through the **Community and Sports Grants Scheme** whereby local sports clubs, residents associations and community & voluntary groups are financially assisted to ensure sustainability. 305 applicants were eligible and €141,350k was allocated in 2016 for this initiative.

Waterford has a proud record of participation in the **Pride of Place Awards**. 2016 saw Waterford represented at the National Pride of Place awards by Waterford Youth Arts, which won a runners-up prize, the Integration & Support Unit which won its category and the Kilmacthomas Tidy Towns Group. The Portlawn Task Force Group was the overall winner of the PPN Waterford Community & Voluntary Awards 2016 and will represent Waterford in the 2017 Pride of Place Awards.

Four **Comhairle na nÓg** members were very privileged to attend the State Ceremonial on June 15th commemorating the 40 children and young people who died during the 1916 Rising. The Teenspace website was launched in 2016. This was a hugely important event for Comhairle. Teenspace is proving to be a wonderful resource to the young people of Waterford and beyond.

**Public Participation Network:** Membership increased in 2016, 553 member groups are now registered with the PPN. The Council was also a lead partner in the annual Community Awards which give recognition to the work of communities across the City and County.

**Joint Policing Committee:** Waterford has a proactive JPC which has been addressing various issues to make Waterford a safer place for all. A well attended public meeting was held in January 2016.

## COMMUNITY AND SPORTS SERVICES

### COMMUNITY SERVICES



**Age Friendly Alliance:** Work commenced on the preparation of an Age Friendly Strategy for Waterford. The Age Friendly Alliance was tasked with the preparation of this strategy which will cover the period 2017-2022. The membership of the Waterford Age Friendly Alliance comes from many public and non-public organisations including the Public Participation Network, Local Link, Dungarvan Care of the Aged, Waterford City & County Council and Waterford/Wexford ETB.

**Community Festival Grants:** The Community Department continued to support community festivals during the year. 32 applications for funding were received with 20 successful applications benefiting from a total spend of €40,750.

**St. Patrick's Day Festival:** The theme for the 2016 festival held in Waterford City was "Three Sisters 2020: Celebrating Waterford's Diversity". 49 groups showcased Waterford's great diversity of cultures, including the Waterford Filipino Irish Community, Ukrainian Communities, and Three Sisters 2020 all receiving awards of Special Commendation.

### WATERFORD LOCAL COMMUNITY DEVELOPMENT COMMITTEE



The **LCDC** has primary responsibility for planning and oversight of local development spend. Public and non-public bodies from local government, state agencies, local communities, development, social, and economic interests are represented on the LCDC.

**The Social Inclusion Community Activation Fund (SICAP)**, worth €1,098,446 to the City and County in 2016 continued to have a major impact on disadvantaged communities and individuals in 2016 with particular consideration given to People with Disabilities, Travellers and Roma.

#### Rural Development Programme 2014 – 2020

During 2016, the Waterford LCDC as the Local Action Group (LAG) commenced the delivery of the local development actions approved in the Local Development Strategy for the rural community – budget €7,522,796.

### SPORT



**To increase participation in sport and physical activity by supporting the development of sports facilities and promoting active communities.**

- **Waterford Sports Partnership and Waterford City & County Council** partnered successfully on a number of projects during the year including the Sean Kelly Tour of Waterford, National Bike Week, National Recreation Week and the Carrickphierish Community Sports Hub project.
- **Williamstown Golf Club:** Extensive use is being made of this municipal golf course, with ongoing upgrading drainage works as per the 5 Year Plan.
- **Regional Sports Centre:** During 2016, Waterford City and County Council added to the facilities an Anti Doping Room to meet UEFA standards, upgraded showers in the changing rooms and upgraded drainage on two playing pitches.
- **Dungarvan Sports Centre:** During 2016 a new meeting room / aerobics room was added to the facility.
- **Carrickphierish sports hall and community facility:** New facility in Waterford City opened in 2016, a significant addition to the social and sporting infrastructure in the area.

**There were 127,548 visitors to LA operated facilities in Waterford in 2016.**

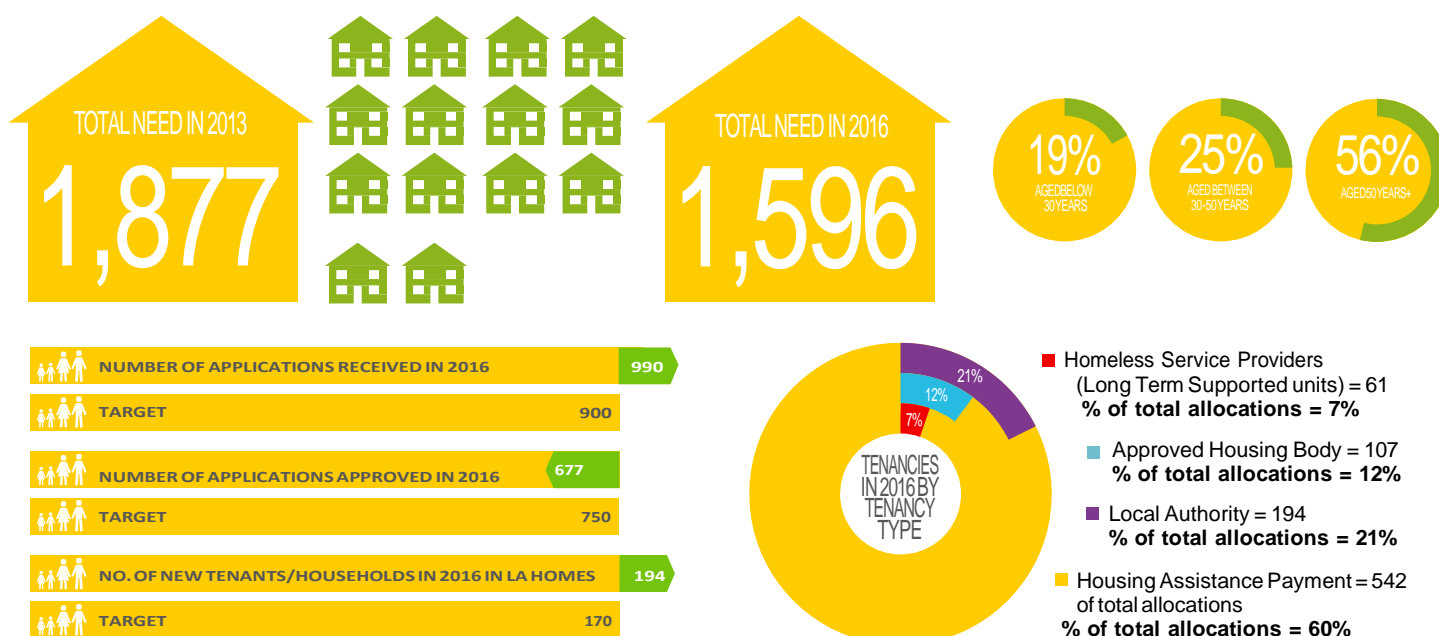
## HOUSING - GENERAL

HOUSING ASSESSMENT,  
ALLOCATION AND TRANSFER

WATERFORD CITY AND COUNTY COUNCIL AIM TO DEVELOP SUSTAINABLE COMMUNITIES AND ALLOCATE HOUSING IN ACCORDANCE WITH THE ALLOCATION SCHEME AND IN THE INTERESTS OF ESTATE MANAGEMENT.

SOCIAL HOUSING NEED  
ASSESSMENT, 2013 AND 2016

The **National Housing Needs** assessment was published by the Housing Agency in December 2016. As of 21st September 2016 a total of 91,600 were assessed as qualified for housing support. This represents an overall increase of 1,728 (or 1.9%) compared to the last assessment carried out in 2013. The Purpose of the National Assessment was to quantify the total number of households qualified for Social Housing across the Country in order to inform policy and plan for the appropriate types of housing support.

WATERFORD ASSESSMENT  
OF NEED

## CHOICE BASED LETTING



Waterford City & County Council introduced an online Choice Based Letting Scheme on a pilot basis in September 2016. This is a new way of allocating certain council properties to approved housing and transfer applicants. Each week between 9 a.m. on Fridays to 12 noon on Thursdays the Council advertise, on a dedicated website, the properties available, on which the applicants can submit an Expression of Interest online.

No. of Page Views

43,519

Properties Advertised

18

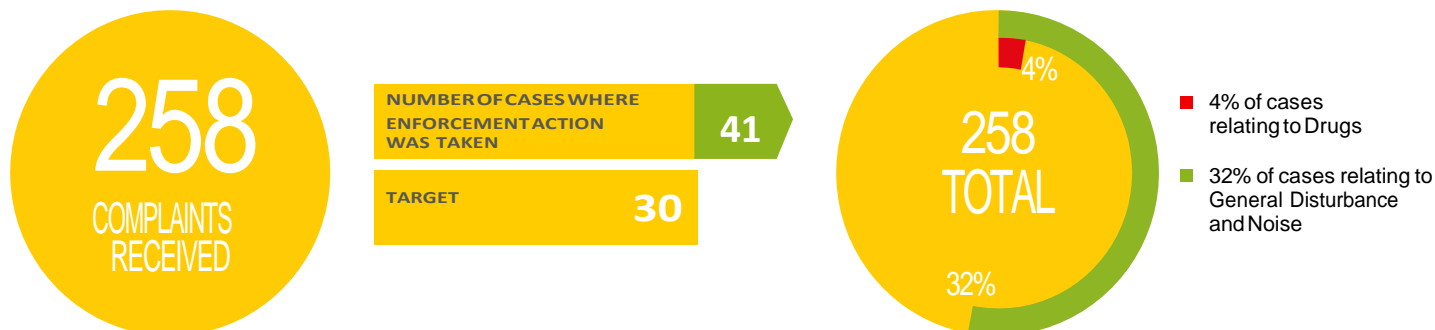
Eoi Submitted

973



# HOMELESSNESS, RAS, HAP & GRANTS

## ANTI-SOCIAL BEHAVIOUR

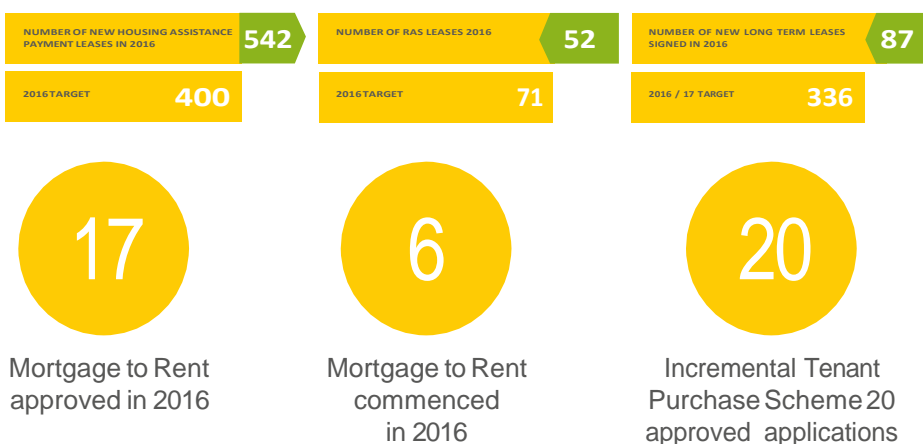


## HOMELESS SERVICES

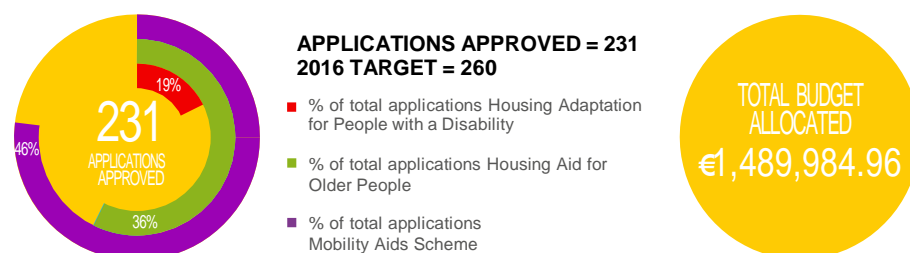
Waterford City & County Council work proactively with the service providers in dealing with the homeless crisis and during 2016 28 additional units of homeless accommodation were provided. Target for additional units in 2016 = 10.



## PATHWAYS TO HOME

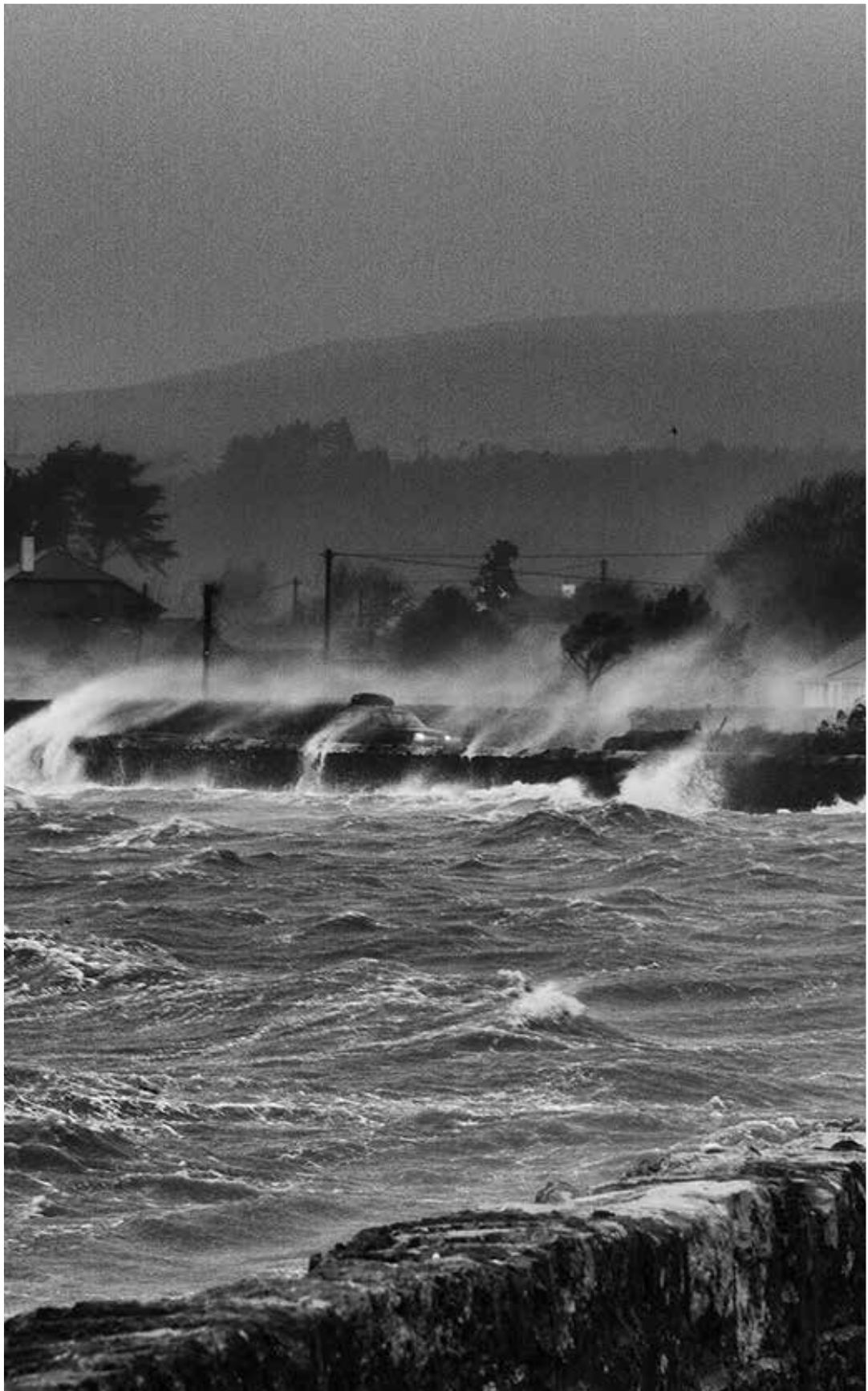


## HOUSING ADAPTATION GRANTS



## HOUSING - CAPITAL

MAINTENANCE AND  
IMPROVEMENT OF LA HOUSING



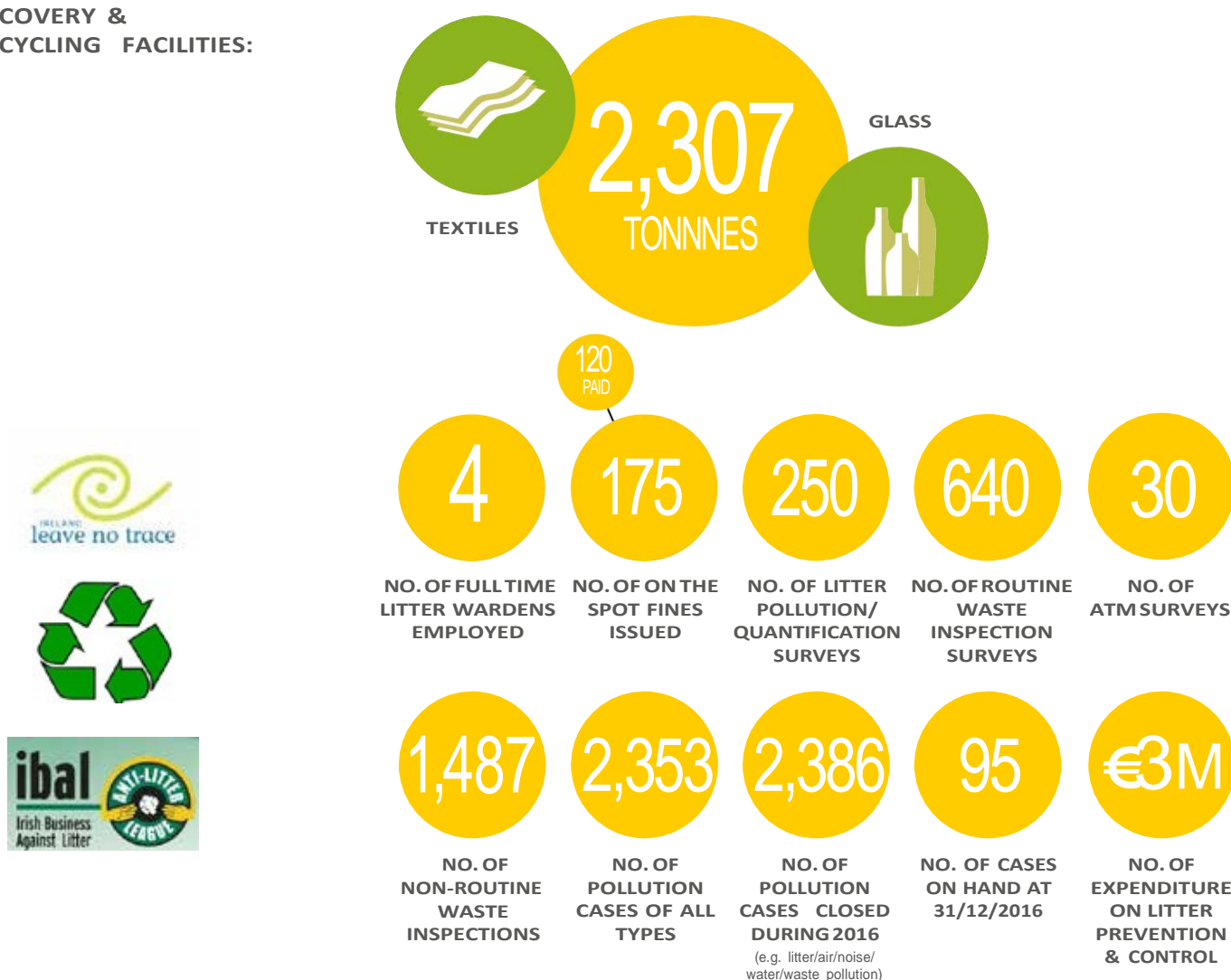
Storms of 2016 over Gold Coast, Dungarvan, Co Waterford.

## ENVIRONMENT

### VETERINARY SERVICES

Regular food safety surveillance inspections, ante and post-mortem meat inspection, slaughter and animal welfare audits, traceability, labelling, staff training and personal hygiene audits have been carried out during 2016 in accordance with the service contract with the Food Safety Authority of Ireland. Food businesses under supervision during 2016 comprised 10 approved premises (4 slaughter-houses & 6 meat processing premises) and 6 registered meat businesses/vehicles. 231 premises/vehicle inspections took place during 2016 and 126 samples were taken in 2016

### RECOVERY & RECYCLING FACILITIES:

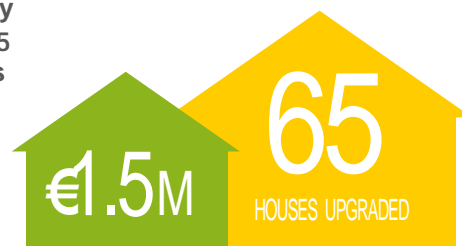


### ENERGY

- Over €1.5 million received in energy efficiency upgrades in 2016, with 65 social and private fuel poor houses upgraded with energy efficiency measures.

- Energy upgrades completed at Kingfisher Club

- Renewable Energy Strategy developed for the County of Waterford.



## LIBRARY SERVICES

WATERFORD CITY AND COUNTY COUNCIL'S LIBRARY SERVICE PROVIDES OPPORTUNITIES TO THE DIVERSE POPULATION ACROSS WATERFORD CITY AND COUNTY FOR LEARNING, COMMUNITY INTERACTION AND CULTURAL PARTICIPATION.

### NO. OF VISITORS TO WATERFORD LIBRARIES IN 2016

515,792

TARGET	500,000
--------	---------

### NO. OF EVENTS HELD BY WATERFORD LIBRARIES

2,299

TARGET	2000
--------	------

### ANNUAL EXPENDITURE ON STOCK PER HEAD

€1.71

TARGET	€2.00
--------	-------

### NO. OF WIFI USERS

26,291

TARGET	10,000
--------	--------

### NO. OF INTERNET SESSIONS

67,557

TARGET	55,000
--------	--------

### NO. OF ITEMS ISSUED FOR BOOKS

368,506

TARGET	371,504
--------	---------

### NO. OF ITEMS ISSUED FOR OTHER

92,177

TARGET	138,411
--------	---------

### NO. OF AUDIOBOOK AND EBOOK DOWNLOADS

5,774

TARGET	3,800
--------	-------

### NO. OF MAGAZINE DOWNLOADS

6,204



**“Your Library, Your Space, Your Future”**, Waterford City and County Council Library Development Plan 2017 -2022 was approved by Council in December 2016. This plan builds on the achievements of the Library Service over the previous years and outlines the priorities for the service going forward. Libraries are constantly embracing new technologies and were busy during 2016 preparing for My Open Library; 24 hour access to library services, and for RFID; self-service book issue.

Over 2,200 events were held in the libraries during 2016 with 515,792 people visiting. The Library Service led on the Waterford 1916 Centenary Commemorations and the launch was held in Central Library in January. Other event highlights include Children's Book Festival, Summer Stars reading programme, the Well Festival, Bealtaine and a host of launches and outreach activities. The Library Service supports the work of many partner organisations in Waterford and was heavily involved in the Sea Horse Commemoration Project in Tramore, Towers and Tales in Lismore and numerous other activities.

## IT SERVICES

### INFORMATION TECHNOLOGY

In 2016 Waterford City & County Council continued strategic use of Information Technology to enhance customer service, support all areas of the Council's business and to improve overall efficiency and effectiveness. There was ongoing work to finalise consolidation of all systems, rationalise IT infrastructure and continue the transformation of service delivery. There was increased focus on mobile working, making best use of mapping technology & participation in national initiatives related to IT.

**Projects in 2016 included the following.**

### GREENWAY PROJECT

Interactive mapping was seen to be a vital component for both marketing and for visitor information purposes. The Geographical Information Systems (GIS) team worked with the Economic Development section to develop maps which facilitate online display of information regarding Greenway route sections, access points & facilities.



### CUSTOMER SERVICE

Mobile Incident Capture & a focus on use of Eircodes for accuracy of address were promoted in an effort to further improve response to customer queries and complaints. A number of Collector Applications were introduced to improve efficiency in relation to surveys & data collection. The Council continued to promote MapAlert, a free service which can give customers real time alerts regarding activity in their area via SMS, email, Facebook & social media.

### CRM SYSTEM

The Customer Relationship Management system (CRM) was upgraded and a number of additional modules introduced to facilitate enhanced customer service at central points of contact in the Council's Customer Service Centres.

### NATIONAL BROADBAND PLAN

The Council nominated a Broadband Officer to act as a central point of contact for operators and Government Departments in relation to Broadband rollout.

### SMART CITY PROJECT



Waterford City & County Council joined the Smart City Forum in conjunction with 6 other cities (Cork, Limerick, Galway, Derry, Belfast & Dublin). This project supported by Maynooth University will seek to find innovative solutions and use new technologies to address urban challenges.

## STRATEGIC POLICY COMMITTEE (SPC)

### HOUSING, COMMUNITY, CULTURE, SPORT AND RECREATION

#### Councillors

- |   |   |
|---|---|
| 1 | Cllr. John Pratt (Chairperson) Sept 2015 – Jun 2016 |
| 2 | Cllr. Tom Cronin (Chairperson) Sept 2016 – Present  |
| 3 | Cllr. John Carey                                    |
| 4 | Cllr. John O'Leary                                  |
| 5 | Cllr. Blaise Hannigan                               |
| 6 | Cllr. Damien Geoghegan                              |
| 7 | Cllr. Laurence O'Neill                              |
| 8 | Cllr. Breda Brennan                                 |
| 9 | Cllr. Sean Reinhardt                                |

#### Sectoral Reps:

- |   |  |
|---|--|
| 1 | Michael Farrell – (Irish Wildlife Society)                     |
| 2 | Rosemary Kennedy – (Rathgormack Hill Walking Club)             |
| 3 | Andrea Galgey replaced Tony McSweeney (Downs Syndrome Ireland) |
| 4 | Jemma Mackey (SIPTU)   |



#### POLICY DOCUMENTS APPROVED BY THE SPC FOR ADOPTION BY PLENARY COUNCIL IN 2016

##### HOUSING

- Housing Disability Strategy
- Housing Allocation Scheme
- Tenant (Incremental) Purchase Scheme

##### CULTURE

- Library Development Plan
- Arts Strategy
- Arts Practice Grants

##### COMMUNITY

- Supporting Communities Grant

## STRATEGIC POLICY COMMITTEE (SPC)

### ENVIRONMENTAL PROTECTION

#### Councillors

- |   |                     |
|---|---------------------|
| 1 | Cllr. Declan Clune  |
| 2 | Cllr. John Hearne   |
| 3 | Cllr. Declan Doocey |
| 4 | Cllr. Jim Griffin   |
| 5 | Cllr. Mary Roche    |
| 6 | Cllr. John Pratt    |

#### Sectoral Reps:

- |   |  |
|---|--|
| 1 | Mr. Peter O'Connor - Environmental representative      |
| 2 | Mr. Peter Kiely – Farming representative               |
| 3 | Ms. Brid O'Heir – Community & Voluntary representative |
| 4 | Ms. Kate Moloney – Social Inclusion representative     |

**3 SPC MEETINGS WERE HELD IN 2016**

March 2      May 25  
November 23

POLICY DOCUMENTS APPROVED BY THE SPC FOR ADOPTION BY PLENARY COUNCIL IN 2016

- Litter Management Plan



# ANNUAL REPORT 2016

## CREATING A GROWTH CULTURE



## ECONOMIC DEVELOPMENT

Waterford City and County Council celebrated the official opening of 35 The Mall, after two years of renovations, in June 2016.

The building is an early 20th Century purpose built commercial Edwardian structure of architectural and artistic interest, built on the site of an earlier Georgian town house. The renovation of this building was carried out primarily by a Community Employment Scheme, under the supervision of Waterford City and County Council.

The building at 35 The Mall is the new home of Waterford City and County Council's Economic Development Department and the Local Enterprise Office.



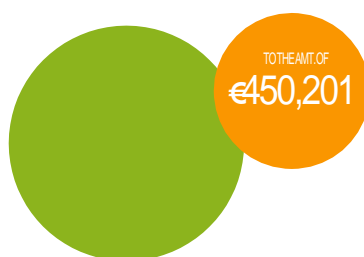
NO. OF LEO  
CLIENTS MET  
IN 2016



NO. OF MEASURE 1  
SUPPORT  
APPLICATIONS



NO. OF CLIENTS  
SECURING MEASURE  
1  
SUPPORT



NO. OF CLIENTS  
SECURING MEASURE  
2  
SUPPORT



NO. OF LEO  
WATERFORD CLIENT  
COMPANIES

- Measure 1 grants are direct financial grants available to microenterprises to support start-up and business expansion.
- Measure 2 grants cover indirect financial support to microenterprises in respect of activities such as training, mentoring, technical assistance, network development, trading online etc.
- The number of clients securing Measure 1 support in 2016 is greater than the number of applicants because some 2015 applicants did not receive approval until 2016.

## ECONOMIC DEVELOPMENT

### RURAL DEVELOPMENT



The Economic Development Section and the Local Enterprise Office are closely aligned with **Waterford LEADER Partnership** to ensure the delivery of the Local Development Strategy, the new LEADER programme and a number of regional rural development initiatives. The Council has also delivered initiatives in a number of rural communities under the REDZ programme, and a FLAG project for the Waterford Harbour area centred on Dunmore East.

### REGIONAL INITIATIVES



**The Local Enterprise Office** is involved in the delivery of a number of regional actions outlined in the South East Regional Action Plan for Jobs as well as a number of support actions funded under an Enterprise Ireland regional LEO competitive fund. These include projects supporting enterprise development in the food and agri-tech sectors as well as the creative industries and some initiatives aimed at supporting businesses to grow and export. The Economic Development Section is also involved in the delivery of a number of tourism-orientated projects with regional partners (e.g. Celtic Routes and Blueway Plus with Wexford and Wicklow).

### PURPLE FLAG



Waterford was successful in retaining the prestigious Purple Flag Accreditation. **The Purple Flag** process incorporates a comprehensive set of standards, management processes and good practice examples designed to help transform town and city centres at night. It is also a research, training and development programme, to help towns and cities improve their evening and night-time economy. Area awarded the Purple Flag are recognised for providing a vibrant and diverse mix of dining, entertainment and culture while promoting the safety and wellbeing of visitors and local residents.

Waterford celebrated its Purple Flag status over the weekend of 7th - 9th October with the launch of the City Safe Initiative. This initiative involves the Gardaí working closely with late night businesses and security staff within the Purple Flag zone. Waterford's 'after dark' economy is substantial; supporting businesses, employing local workforce and contributing significantly to our local economy.

### AGE FRIENDLY WATERFORD



Waterford City and County Council won the **Age Friendly Business Award** for our successful launch of the Age Friendly Business Recognition Programme. Waterford was one of seven projects from across the country recognised for their innovative and creative approaches to making Ireland a great place in which to grow old at the Age Friendly Recognition and Achievement Awards.

The event was hosted by Age Friendly Ireland, the host organisation of Ireland's Age Friendly Cities and Counties Programme, which is built on the recognition of the valuable role that older people can and should play in shaping their communities for the better.

### BUSINESS WATERFORD



**Business Waterford** social media aims to present Waterford as a positive, progressive and supportive location for business. Social media is used to highlight positive news, statistics, events, and awards of interest to people living, working, or doing business in Waterford. It also targets potential investors and people thinking of moving to Waterford for employment by featuring content on the favourable business environment, quality of life and job opportunities in Waterford.



# TOURISM

Waterford City & County Council Tourism had a promotional stand at **Holiday World** in Dublin for three days in January. This is a consumer holiday show aimed at the domestic market.

The Council collaborated with Rosslare Europort, Kilkenny County Council, Wexford County Council and Tourism Ireland in a spring promotion in the UK.

The Council also worked closely with Tramore Chamber of Tourism and Commerce on the delivery of a marketing project that was funded by the **REDZ initiative**. This includes the making of short videos to promote Tramore. Directional and interpretative signage for new Scenic Driving Routes which included Tramore, the Copper Coast and the Comeraghs was also provided.

**Munster Vales initiative** – Waterford City & County Council is part of a tourism marketing initiative between Tipperary, Cork, and Limerick Councils with a focus on walking and adventure activities in the four mountain ranges, Knockmealdowns, Comeraghs, Nagles and Ballyhoura.



**Red Water** a six part television series produced by the BBC as a spin off from the popular soap 'Eastenders' was filmed in Dunmore East.

A US lifestyle television channel **Evine** broadcasted live to the USA from Waterford twice during 2016. They broadcast from Waterford Crystal, the Bishop's Palace, the Medieval Museum and Bailey's New Street. They also showed pre-recorded footage of the Copper Coast, Lismore and Tramore.

Tourism Department worked with Fáilte Ireland on ensuring that Waterford had a strong presence in **Ireland's Ancient East** promotion.



In August a **Visit Waterford** video specifically promoting Tramore was produced with funding from REDZ that was allocated to Tramore marketing. The video was widely promoted on Social Media in August to the Dublin market.

## CULTURAL SERVICES

## FESTIVALS AND EVENTS



Arts grants support for Arts Festivals and Arts Venues ensures that Waterford has a vibrant and accessible artistic environment. In addition artists and arts organisations were supported through a range of grants, bursaries and awards throughout the year. Including Arts Practice grants, Artlinks bursaries for continuing artistic professional development, Tyrone Guthrie Regional Arts Award, O'Regan Arts Bursary, Irish Youth Choir Summer School, Drama League of Ireland Summer School, Writing Bursaries and the Blas Traditional Arts Bursary.

2016 saw the launch of “**A Shared Vision for Waterford Arts**” following an extensive consultation process.



The Arts Council/An Chomhairle Ealaíon partnered with the Arts Service on a number of programmes including Arts in Education, Arts in Health, Community Arts and art form specific projects in the areas of film, literature, music and visual arts, maximising participation opportunities in Waterford.

The Arts Service, through FilmLAB, aided the production of 11 short films shot in Waterford and the immediate region. Four new plays were premiered as a direct result of a new Arts Service Playwright & Producer scheme and the Arts Service worked closely with Garter Lane and a new theatre development company enable ‘A Little Room’ get off the ground.

The Arts Service commissioned new play by Waterford playwright Jim Nolan ‘**Johnny I Hardly Knew Ye**’ premiered during the 1916 Centenary commemorations.

The Arts Service ran two national literature awards in 2016, the **Molly Keane Creative Writing Award** and **Seán Dunne Young Poets Award**.



A year round exhibitions programme took place in The Old Market House Arts Centre, Dungarvan and Greyfriars Gallery in the City. The Arts Service worked closely with the artistic directors of Soma Gallery to secure tenure with licensing agreements and the formalization of the partnership. Soma was rebranded as **GOMA (Gallery of Modern Art) Waterford**.

Tramore Development Trust continues to operate the Coastguard Cultural Centre, Tramore. Goma Contemporary Gallery is operating with a curatorial team. Renovations on the Town Hall Theatre, Dungarvan concluded in 2016.

## CULTURAL SERVICES

## WATERFORD MUSEUM OF TREASURES



Waterford Treasures is the only cultural institution in Ireland that is open seven days per week 362 days per year.

2016 - Waterford Museum of Treasures - Expanding and developing the historic attractions in the Viking Triangle for the economic and cultural benefit of Waterford City and County

2016 saw four major additions to the heritage attractions in the Viking Triangle:

1

#### Commemorating 1916

To commemorate the **100th anniversary of the 1916 Rising** the museum staff researched, designed and project-managed a **new exhibition entitled Other Voices** on the top floor of the Bishop's Palace. Over €30,000 was raised independently by the museum to mount this permanent commemoration of the Rising. The exhibition opened in March 2016.

2

#### Promoting independent glass crafts in the Bishop's Palace

In order to promote the **historic story of glassmaking in Waterford** and complement the tourism offering in the House of Waterford Crystal a new exhibition on the story of Waterford Glass was opened on the top floor of the Bishop's Palace. The exhibition traces the developments in glassmaking in Waterford from the 18th century through to the 19th century and on to its revival in the 20th century.

3

#### Opening City Hall to the Public

Waterford Museum of Treasures, researched, designed and project managed the installation of the hugely acclaimed and successful **Mayors Through the Ages** exhibition in City Hall, Waterford. The exhibition was formally opened by the Mayor in June 2016.

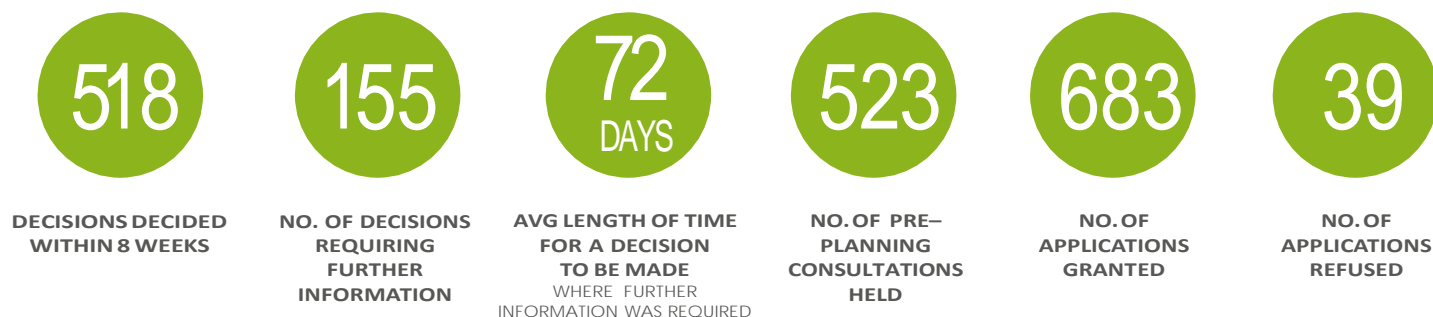
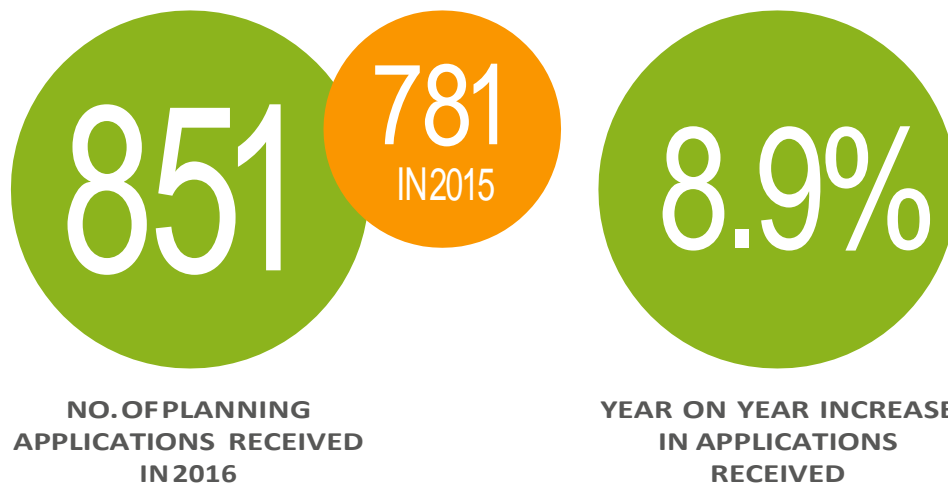
4

#### Putting the Vikings back into the Viking Triangle

To enhance the Viking element of the Viking Triangle Waterford Treasures secured a grant of €145,100 to develop the **Viking House Experience** – a state of the art **Oculus Rift 3D experience** set in a reconstructed 11th century Viking house.

## PLANNING

## DEVELOPMENT MANAGEMENT



## WEBSITE DEVELOPMENT



New content was developed for the Planning website in 2016. A total of 41,000 words of additional content were added during the year. An update was also undertaken to the online planning viewer (whereby users can view planning applications) which makes the system more user friendly and more accessible on mobile devices. Planning information has now been made available on the Map Alert System, Facebook and Twitter platforms.

No. of Yearly Page Views

188,547

Weekly Visits

3,625

## PLANNING

## PLANNING ENFORCEMENT



**TOTAL NUMBER OF ENFORCEMENT  
CASES REFERRED TO OR  
INITIATED BY PLANNING AUTHORITY  
IN 2016**



**TOTAL NUMBER OF CASES  
SUBJECT TO COMPLAINT  
THAT WERE INVESTIGATED  
AND CLOSED**

## FORWARD PLANNING

Three Variations to the Waterford City Development Plan 2013-2019, Waterford County Development Plan 2011-2017 and the Dungarvan Town Development Plan 2012-2018 were commenced or undertaken during the year, as follows:

**Variation No.1: Development Management Standards** - adopted in September 2016 and merges the Development Management Standards of the existing development plans in order to provide uniform standards for new development proposals across the planning authority area of Waterford City & County Council.

**Variation No.2: Renewable Energy Strategy for Waterford (RES)** was also adopted in September 2016. The variation examines opportunities for various renewable energy technologies and resources appropriate to Waterford and will inform future development plan policy.

**Proposed Variations No.3a: Vacant Site Levy and 3b Part V Social Housing Provision.** Public consultation was completed for proposed Variation No.3a and 3b. in 2016. The variations were adopted in February 2017.

**Strategic Development Zone (SDZ)**, North Quays – work was ongoing on this project in 2016. A major strategic development of the site was announced in Q1 2017.

Inputs into Compulsory Purchase Orders and Part VIII Planning applications were undertaken during the year.

HERITAGE AND  
CONSERVATION  
SERVICES

The Heritage Plan was reviewed during 2016 and adopted in early 2017.

Heritage Projects undertaken during 2016 included publication of a Book on the Holy Wells in County Waterford, a Writers of the Irish Language project, a study of Wetlands in the County and Heritage signage.

Monies were allocated (circa €160,000) and works were completed under the Structures at Risk Fund and Built Heritage Leverage Scheme 2016. Some 17 Projects, both public and private, were grant aided.

The Review of the Record of Protected Structures (RPS) – a survey of all the protected structures was completed in 2016. As of Quarter 1 2017, the data and findings are currently being collated and evaluated

## STRATEGIC POLICY COMMITTEE (SPC)

### PLANNING SPC

#### 7 Councillors

- 1 Cllr. Joe Conway
- 2 Cllr. Tom Cronin - Member during 2016
- 3 Cllr. M.J O’Ryan.
- 4 Cllr. Jason Murphy
- 5 Cllr. Seanie Power
- 6 Cllr. James Tobin
- 7 Cllr. Siobhan Whelan

### FORWARD PLANNING

#### Sectoral Reps:

- 1 John Galloway - Environment
- 2 Anne Marie Rossiter - Business
- 3 John O’Donnell - Community & Voluntary
- 4 John Fitzgerald - Farming
- 5 Donal Lehane - Social Inclusion



#### POLICY DOCUMENTS APPROVED BY THE SPC FOR ADOPTION BY PLENARY COUNCIL IN 2016

- Waterford Renewable Energy Strategy
- Waterford Heritage Plan
- Development Management Standards Variation
- Vacant Sites Levy Variation
- Amended Part V provisions Variation

## STRATEGIC POLICY COMMITTEE (SPC)

### ECONOMIC DEVELOPMENT & ENTERPRISE SPC

#### 8 Councillors

- 1 Cllr. Eamon Quinlan
- 2 Cllr. Lola O'Sullivan
- 3 Cllr. Pat Nugent
- 4 Cllr. John Cummins
- 5 Cllr. Davy Daniels
- 6 Cllr. Liam Brazil
- 7 Cllr. Eddie Mulligan

#### 6 Sectoral Reps:

- 1 Samantha Richardson - Environment
- 2 Paul Nolan\* - Business
- 3 Gerty Murphy - Community & Voluntary
- 4 Mark Connors - Farming:
- 5 Garrett Wyse\*\* - Social Inclusion
- 6 David Lane - Trade Union

\*Paul Nolan replaced Brendan Cummins

\*\*Garrett Wyse replaced Andrea Galgey



#### POLICY DOCUMENTS APPROVED BY THE SPC FOR ADOPTION BY PLENARY COUNCIL IN 2016

- Waterford City & County Council Casual Trading Bye Laws
- Waterford City & County Economic Support Grant Scheme 2017-2018



ANNUAL REPORT 2016  
**A STRONG FOUNDATION**



## PROPERTY MANAGEMENT

The Property Management Department manages land and property (other than local authority houses) owned by Waterford City & County Council. The section works with various directorates in the Council to achieve optimum use of the Council's Landbank and acquires land and property rights required for the Council's various infrastructural projects. In 2016 the Property Management Departments projects included:



### In 2016 the Property Management Departments projects included:

Acquisition, disposal and management of properties for Waterford's Cultural and Heritage Quarter. The acquisition of a portfolio of properties from the Trustees of the Holy Ghost Hospital within the Viking Triangle was completed in October 2012. Property Management continues to support the work of the newly formed Waterford Viking Trust Ltd on the management of same.

- The Fat Angel opened the doors of 1&2 Cathedral Square as a Café/Wine Bar in November 2016 and a new tenant was acquired for The Bishops Palace Café.
- New tenants Willow & Wild and Cherub Couture Cakes also moved into 126 Parade Quay.
- CPO process commenced for the Dungarvan Road Flood Relief Scheme.
- Leasing of various car parks to facilitate the Greeway at Kilmacthomas, Shanacool & Kilotteran.
- Acquisition of 3.47 acres at Dungarvan Shopping Centre
- Acquisition of land to improve sightlines at Tramore & Clonea
- Acquisition of Greene's Coal Yard at Hennessy's Road and 4 housing units to facilitate road widening for the Urban Renewal Scheme and to facilitate the Michael Street shopping centre.
- Acquisition of Site at Maypark for future development.
- Lease of Kilmacthomas Mill to Gortinore Distillery.
- Completion of Rent Review for Keverflow Car Park on Meagher's Quay.
- Various boundary rectifications and small disposals completed throughout City & County.
- Lease to the new owners of Passage East Car Ferry.

### TRANSPORTATION / INFRASTRUCTURE & ECONOMIC DEVELOPMENT

## PROPERTY MANAGEMENT

### COMMUNITY / VOLUNTARY / ARTS

- Acquisition & Lease to Villierstown Community Development C.L.G. of derelict premises in Villierstown.
- Lease to 8th Tramore Scouts at Carrigavantry .
- Licence to Clashmore/Kinsalebeg Climate Change Response Group at Piltown.
- Licence to Waterford Beekeepers Association at Ballyharrahan, Dungarvan.
- Licence to Helvick Fisherman's Association of the Ice House at Helvick Pier.
- Licence for a Men's Shed at Kilbarry Halting Site to the Waterford Traveller CDP.
- Licence to GOMA Art Gallery of 6-8 Lombard Street.
- Lease of land from Glanbia for amenity/landscaping at entrance to Tallow.
- Landscaping and fencing at Dunmore East Woods in conjunction with the Woodlands Trust.

### HOUSING

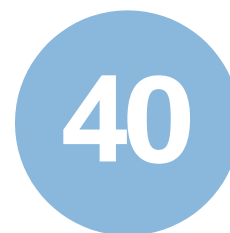
Acquired for social housing stock in 2016 and driven by Central Government providing additional funding,



**HOUSES  
ACQUIRED**



**APARTMENTS  
ACQUIRED**



**SALE OF  
FREEHOLDS**

### MAPPING / MANAGEMENT INFORMATION & PRA-DIGITISATION

Continued to work with Property Registration Authority (previously Land Registry) to improve mutual knowledge on Waterford City & County Council's land bank records. Waterford City & County Council was the first Authority to request digital ownership details from PRA. The Property Management Department in conjunction with GIS Co-ordinator continues to examine the effect of the amalgamation of City and County on the land bank/property records held by both authorities, how to present information digitally and appropriate management system for same.



## EMERGENCY SERVICES

## WATERFORD FIRE SERVICE

Waterford Fire Service responds to a wide variety of emergencies (Operations) as well as monitoring and advising on fire safety in the built environment (Fire Safety)

A total of 130 persons are employed in the Service, comprising Officers, fulltime and part-time firefighters, administration support and a brigade mechanic. The service operates from 10 fire stations under the control of the Chief Fire Officer

NUMBER OF  
PEOPLE EMPLOYED  
IN THE SERVICE.

130

10

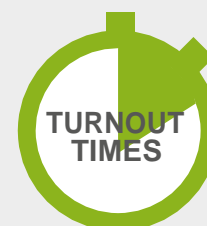
NUMBER OF  
FIRE STATIONS

2016 BRIGADE ATTENDANCE  
SCHEDULE OF INCIDENT TYPES.

Special service incidents are wide ranging but include road traffic accidents, road hazards, chemical incidents, flooding, river rescue, river body recovery and the provision of fire cover for Coast Guard helicopter landings.



- 692 - Fire calls
- 145 - False Alarms
- 375 - Special Services\*



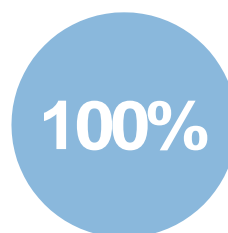
**5M 31SEC** **1M 28SEC**  
Times for retained Brigades Times for Full time Brigades

## EMERGENCY PLANNING

The fire service leads the planning and preparation of Waterford City and County Councils response to emergencies of any nature. It does so by preparation and exercising of the Major Emergency Plan as well as advising on co-ordinated responses to emergencies other than major emergencies.



EXERCISES  
CARRIED OUT



TARGET  
REALISATION



Severe Weather Plan  
completed in 2016

Flooding Plan  
completed in 2016

## FIRE PREVENTION

The fire service promotes fire safety in a number of ways:

- Inspecting premises and advising building owners
- Reporting to the Courts on liquor licensing applications
- Enforcing fire safety by serving of notices where necessary
- Assessment of fire safety certificate applications
- Advising the Planning Authority on planning applications
- Inspecting and licensing of petrol stations
- Delivering Community Fire Safety initiatives such as the Third Class Programme, Fire Safety Week and media campaigns.

A risk categorisation of premises has been completed and all high risk locations have been inspected



94 fire safety certificate applications were received in 2016 and the statutory process has been completed for all within eight weeks.

## EMERGENCY SERVICES

### BUILDING CONTROL

The Building Control Department is based within Emergency Services and is delivered from Dungarvan Fire Station. It is concerned with the delivery of Waterford City and County Councils functions under the Building Control Regulations 2007-2015.

#### PERFORMANCE MEASURE

##### MANAGEMENT

**TARGET 2016**  
ALL APPLICATIONS DEALT WITH WITHIN TIME LIMIT

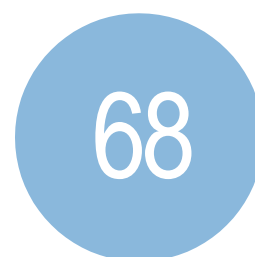
The following range and number of applications were received and dealt with by the Building Control section. All applications were dealt with within the statutory time limits



**COMMENCEMENT  
NOTICES**



**COMPLETION  
CERTIFICATES**



**DISABILITY AC-  
CESS CERTIFI-  
CATES**

#### PERFORMANCE MEASURE

##### INSPECTION

**TARGET 2016**  
NATIONAL TARGET INSPECTIONS CONDUCTED

82 building developments were inspected which is well in excess of the National Target.

## EMERGENCY SERVICES

## CIVIL DEFENCE

Civil Defence is a volunteer-based emergency response organisation. Civil Defence supports the frontline emergency services, e.g. in dealing with severe weather or searching for missing people and also carries out community support activities, e.g. providing first aid cover at both local and national events. Civil Defence operates at national level under the Department of Defence with delivery of service through the local authority.



2016 EXERCISE  
TARGET



EXERCISES  
CARRIED OUT



- All Services Exercise
- Major Emergency Management Exercise
- Regional Water Exercise
- River Blackwater Exercise
- Local Radiation Monitoring Exercise
- National Radiation Monitoring Exercise
- Inter Agency Exercise
- Clonmel Search Exercise
- Night Search Exercise
- Avian Flu Exercise

## DUTIES INCLUDED

- Festival of Food, Dungarvan 2 days
- Sean Kelly Cycle Tours, 2 days
- Waterford Daytripper, 3 days
- 1848 Tricolour Celebrations, 3 days
- Waterford Harvest Festival, 3 days
- Waterford Winter Festival, 20 days
- Missing persons searches, 3 days, 9 days and 2 days

## CHAPTER SECTION

ROADS, TRANSPORTATION  
AND SAFETYMAINTENANCE AND  
IMPROVEMENT OF NATIONAL  
PRIMARY AND  
SECONDARY ROADS

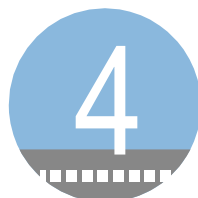
In 2016 the full network of National Primary and National Secondary Roads in Waterford were audited for defects.



KILOMETRES OF  
NATIONAL PRIMARY  
ROAD STRENGTHENED



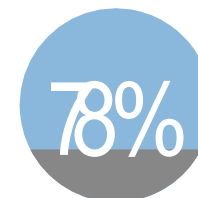
KILOMETRES OF NATIONAL  
SECONDARY ROAD  
STRENGTHENED

MAINTENANCE AND  
IMPROVEMENT  
OF REGIONAL AND  
LOCAL ROADS

KILOMETRES OF  
REGIONAL ROAD  
STRENGTHENED



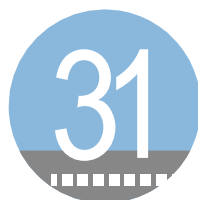
KILOMETRES OF  
REGIONAL ROAD  
SURFACE DRESSED



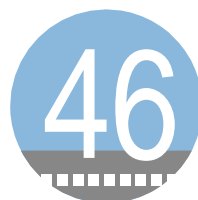
% OF NON  
NATIONAL ROADS  
SURVEYED



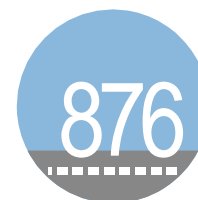
NO. OF BRIDGES  
REPAIRED/RSTORED  
(REGIONAL ROADS)



KILOMETRES OF  
LOCAL ROADS  
STRENGTHENED



KILOMETRES OF  
LOCAL ROAD  
SURFACE  
DRESSED



KILOMETRES OF  
LOCAL & REGIONAL  
ROAD DRAINAGE  
WORKS



NO. OF BRIDGES  
REPAIRED/  
RESTORED  
(LOCAL ROADS)

## SEVERE WEATHER EVENTS

A number of severe weather events in Waterford during December 2015 and into early 2016 saw unprecedented rainfall up to five and six times the average for the period fall in the county. This resulted in the destruction of roads, collapse of embankments, mudslides and damage to farms and properties. The damage to the road network was extensive, and the post clean-up necessitated some 8,500 additional working hours. A summary of the costs involved broken into four categories as follows

Summary of Costs	Costs
Clean-up Costs	366,000
Road Infrastructure Damage	11,365,000
Coastal Defences and Infrastructure Damage	2,300,000
Flood Remediation Works	5,495,000
<b>Total</b>	<b>19,526,000</b>

Following submissions to the Department of Environment Community and Local Government and the Department of Transport, Tourism and Sport, Waterford City and County Council received funding of €7,350,000

## CHAPTER SECTION

STRATEGIC POLICY  
COMMITTEE (SPC)TRANSPORTATION  
INFRASTRUCTURE  
AND EMERGENCY  
SERVICES SPC

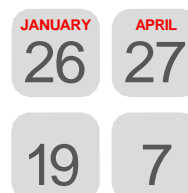
## 7 Councillors

- |   |                          |
|---|--------------------------|
| 1 | Cllr. Joe Conway (Chair) |
| 2 | Cllr. Pat Fitzgerald     |
| 3 | Cllr. Seamus O'Donnell   |
| 4 | Cllr. Sean Reinhardt     |
| 5 | Cllr. Adam Wyse          |
| 6 | Cllr. Cha O'Neill        |
| 7 | Cllr Ray Murphy          |

## 5 Sectoral Reps:

- |   |                          |                |
|---|--------------------------|----------------|
| 1 | Development/Construction | Tom O'Brien    |
| 2 | Business/Commercial      | George Kehoe   |
| 3 | Environment              | Alan Walshe    |
| 4 | Social Inclusion         | Garrett Wyse   |
| 5 | Community and Voluntary  | James Coughlan |

4 SPC MEETINGS  
WERE HELD  
IN 2016



## THE FOLLOWING POLICIES/BYE-LAWS WERE PASSED BY THE SPC:

- Winter Service Plan
- Small Business Delivery Permits
- Policy on Immobilisation, Removal, Storage and Disposal of Vehicles for Parking Offences
- Hedgecutting Policy
- Policy change for Builders parking
- Control of Skip Bye-Laws
- Appointed Stands Bye-Laws



ANNUAL REPORT 2016  
**OUR FINANCES**



## ANNUAL FINANCIAL STATEMENT

## FINANCIAL SUMMARY 2016 - SUBJECT TO AUDIT

Summary of Revenue Account	2016	2015
	€M	€M
Opening Balance at 1st January	-8.0	-8.7
<b>Expenditure for Year</b>	122.9	114.1
Transfers to Reserves	5.3	5.9
	<b>128.2</b>	<b>120.0</b>
<b>Income for Year</b>		
State Grants	59.1	49.2
Goods and Services	36.6	38.1
Commercial Rates	32.9	33.4
	<b>128.6</b>	<b>120.7</b>
Surplus/(Deficit) for Year	0.4	0.7
<b>Summary of Balance Sheet</b>		
Fixed Assets	2,163.7	2,149.8
Work in Progress	19.6	15.5
Long Term Debtors	71.7	77.4
Current Assets	34.1	37.4
Current Liabilities	-41.8	-42.5
Sub Total	2,247.3	2,237.6
Long Term Creditors	-128.0	-128.6
	<b>2,119.3</b>	<b>2,109.0</b>
<b>Represented by:</b>		
Capitalisation Account	2,163.7	2,149.8
Work in Progress	12.3	12.7
Specific Revenue Reserve	0.5	0.5
General Revenue Reserve	-7.6	-8.0
Other Balances	-49.6	-46.0
<b>Total Reserves</b>	<b>2,119.3</b>	<b>2,109.0</b>

## COUNCIL EXPENSES &amp; ATTENDANCE

REGISTER OF COUNCILLORS PAYMENTS  
JANUARY TO DECEMBER 2016

Councillor	Training	Conferences
* Mary Butler		
Liam Brazil		656.13
Breda Brennan		
John Carey	4,330.02	699.63
Tom Cronin	4,725.75	482.32
Declan Clune		
Joe Conway	4,218.55	699.63
John Cummins		100.00
Davy Daniels	1,075.97	
Declan Doocey	2,534.55	100.00
Pat Fitzgerald		
Damien Geoghegan	2,456.56	699.69
Jim Griffin		
Blaise Hannigan	140.82	
John Hearne		
Joe Kelly	652.58	
Eddie Mulligan	479.82	674.88
Jason Murphy	4,461.49	571.94
* Ray Murphy		450.00
Pat Nugent	720.00	
John O'Leary	4,213.14	661.30
Lola O'Sullivan	1,367.38	498.58
Michael J. O'Ryan	1,702.84	
Laurence (Cha) O'Neill	3,696.15	554.38
Seamus O'Donnell		
Seanie Power	1,524.45	
John Pratt	3,370.10	469.32
Eamon Quinlan	1,773.53	
Sean Reinhardt	1,159.14	700.21
Mary Roche	1,853.34	
James Tobin		699.86
Siobhan Whelan		
Adam Wyse		
<b>Totals</b>	<b>50,129.24</b>	<b>8,717.87</b>

• Mayors/Cathaoirleach change in June each year following the AGMs of the Plenary and District Councils.

• SPC Chair allowance is €6000 per annum, the Chairs can change in June each year.

\* Cllr Mary Butler was elected to the Dáil in February 2016 and this vacancy was filled by Cllr Ray Murphy who was co-opted to Waterford City and County Council on 15th March 2016

## COUNCIL EXPENSES &amp; ATTENDANCE

COUNCIL MEETING  
ATTENDANCE

COUNCILLORS	TOTAL MEETINGS ATTENDED	TOTAL MEETINGS HELD 2016*
Cllr. Liam Brazil	49	57
Cllr. Breda Brennan	44	54
Cllr. Mary Butler**	4	5
Cllr. John Carey	47	54
Cllr. Declan Clune	35	48
Cllr. Joe Conway	47	54
Cllr. Tom Cronin	42	52
Cllr. John Cummins	46	57
Cllr. Davy Daniels	39	51
Cllr. Declan Doocey	42	59
Cllr. Pat Fitzgerald	53	59
Cllr. Damien Geoghegan	35	46
Cllr. Jim Griffin	41	49
Cllr. Blaise Hannigan	43	50
Cllr. John Hearne	51	56
Cllr. Joe Kelly	34	50
Cllr. Eddie Mulligan	47	55
Cllr. Jason Murphy	44	54
Cllr. Ray Murphy***	29	36
Cllr. Pat Nugent	48	51
Cllr. Seamus O'Donnell	33	46
Cllr. John O'Leary	42	49
Cllr. Cha O'Neill	50	65
Cllr. Michael J O'Ryan	45	51
Cllr. Lola O'Sullivan	36	51
Cllr. Seanie Power	45	49
Cllr. John Pratt	44	61
Cllr. Eamon Quinlan	42	51
Cllr. Seán Reinhardt	42	54
Cllr. Mary Roche	51	53
Cllr. James Tobin	41	46
Cllr. Siobhan Whelan	32	46
Cllr. Adam Gary Wyse	47	50

\* Meetings included : Plenary Council, Municipal & Metropolitan District, SPC's and JPC's

\*\* Elected to Dáil Eireann in 27th February 2016

\*\*\* Co-opted on 15th March 2016 to replace Cllr Mary Butler

CHAPTER SECTION

  
**MAINTENANCE AND IMPROVEMENT  
OF LA HOUSING**

