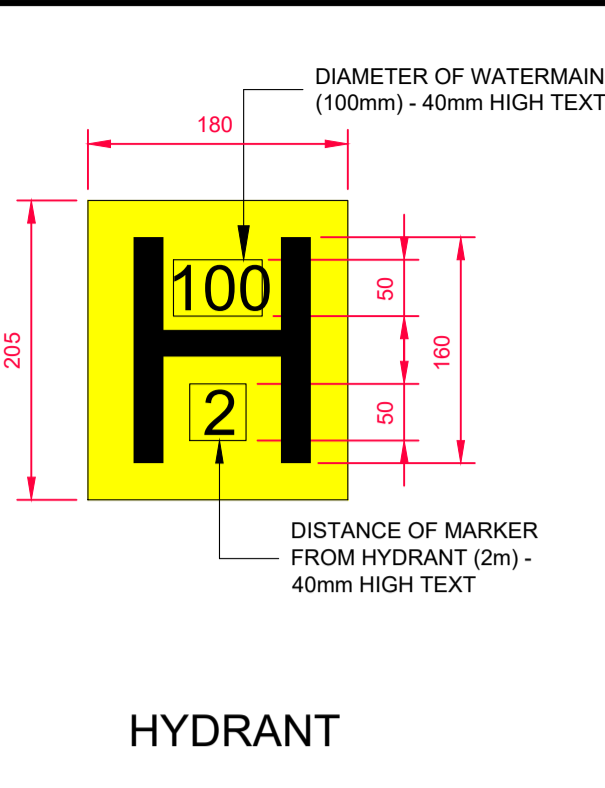
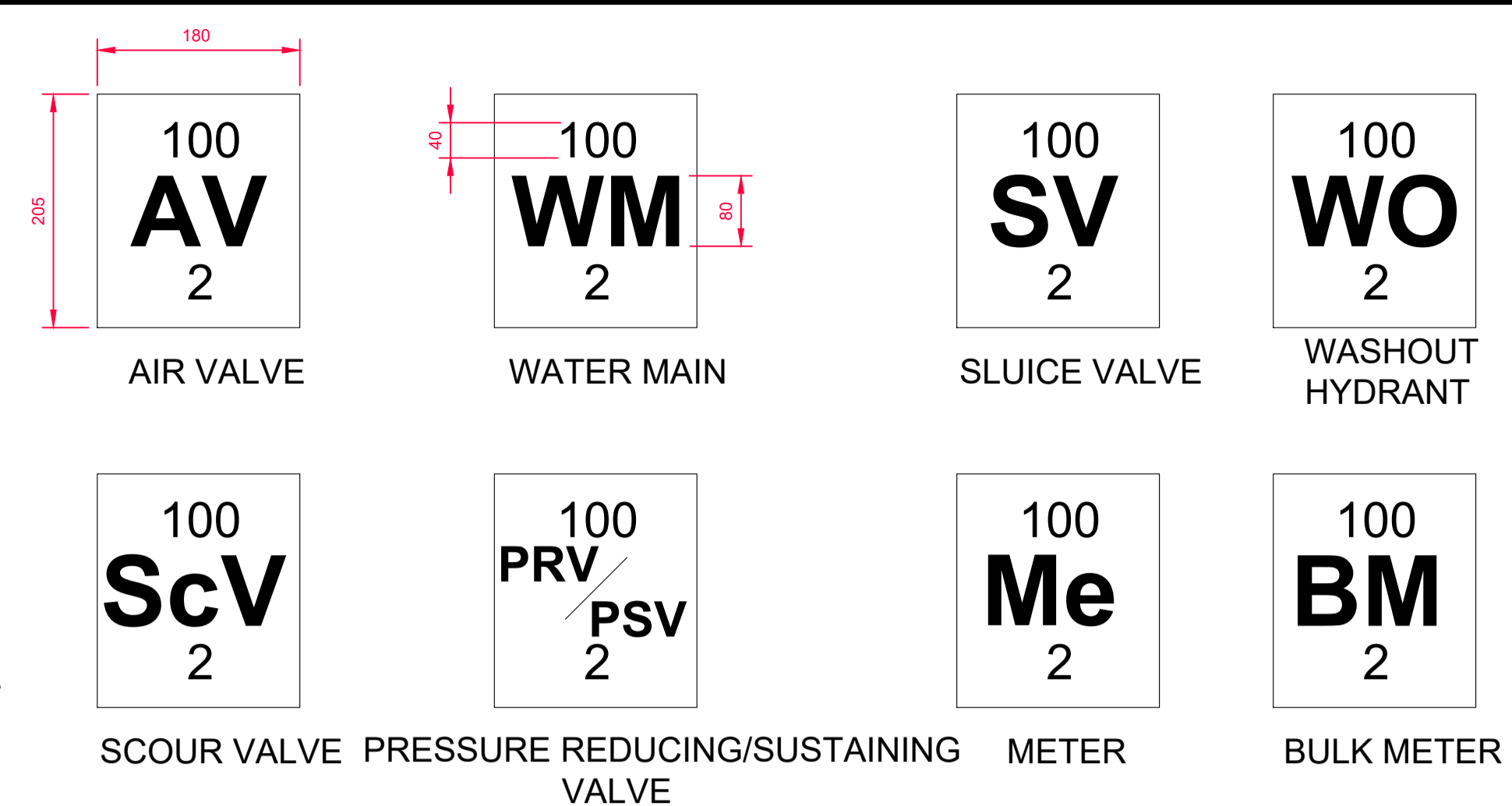
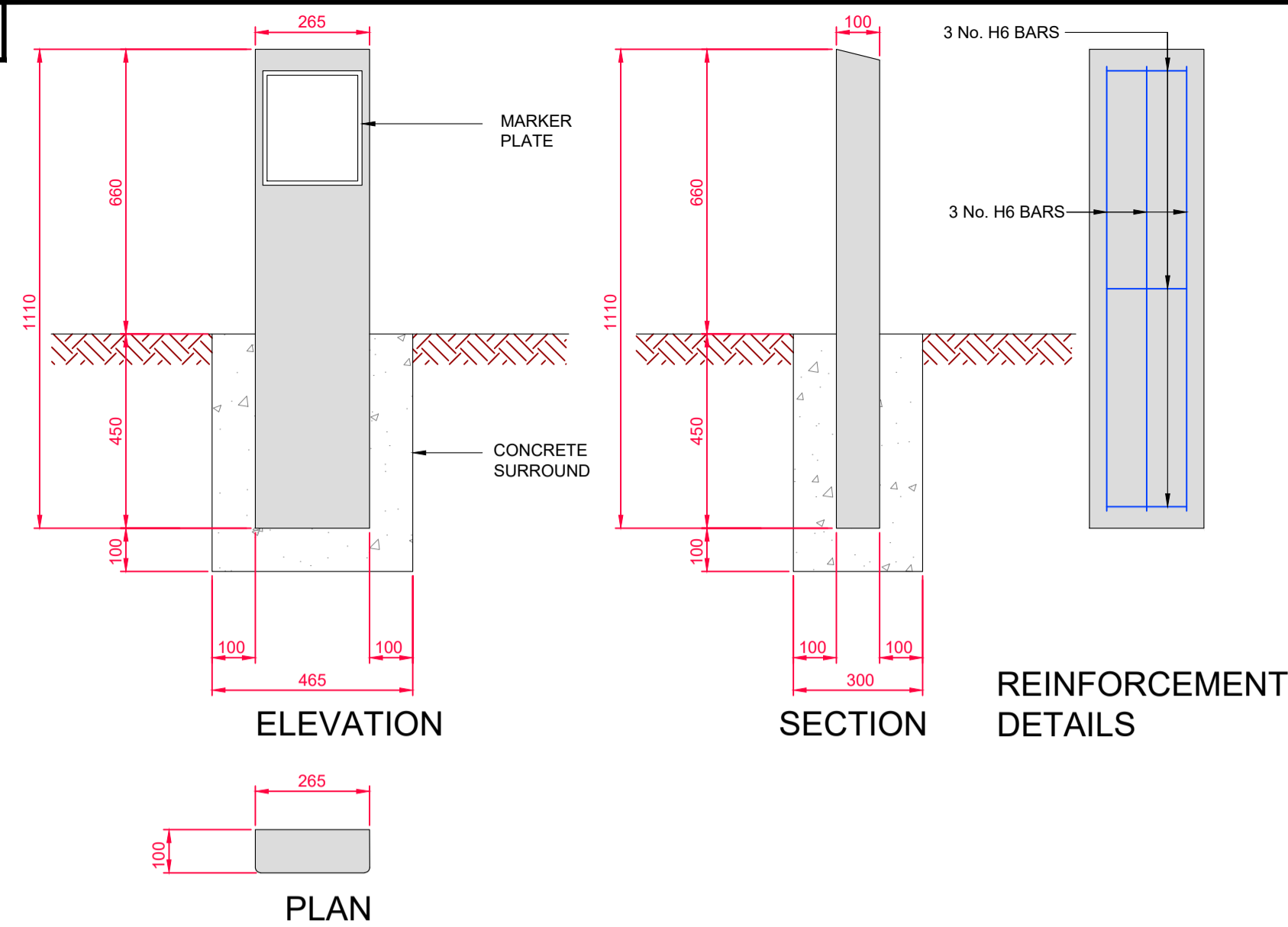


A1

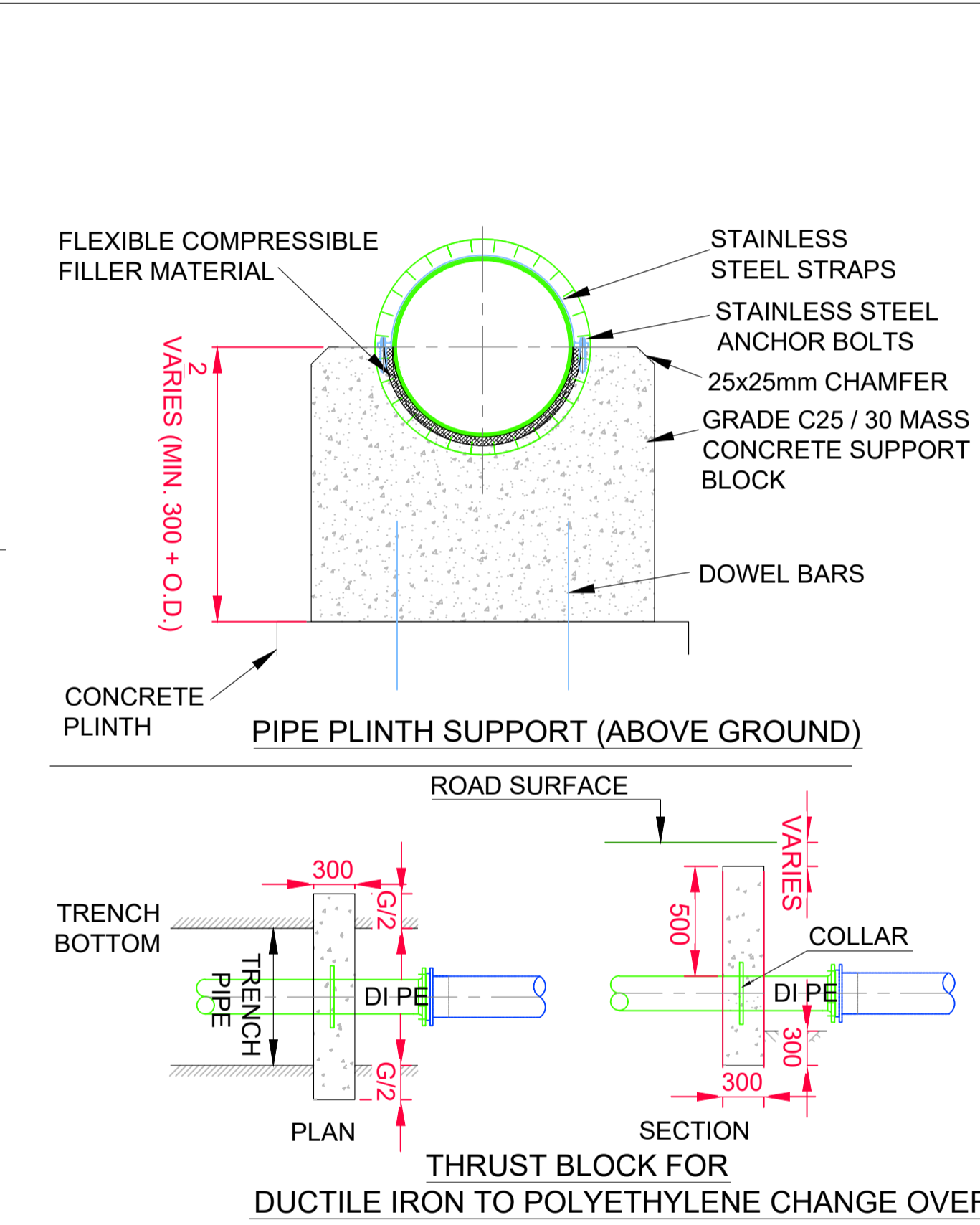
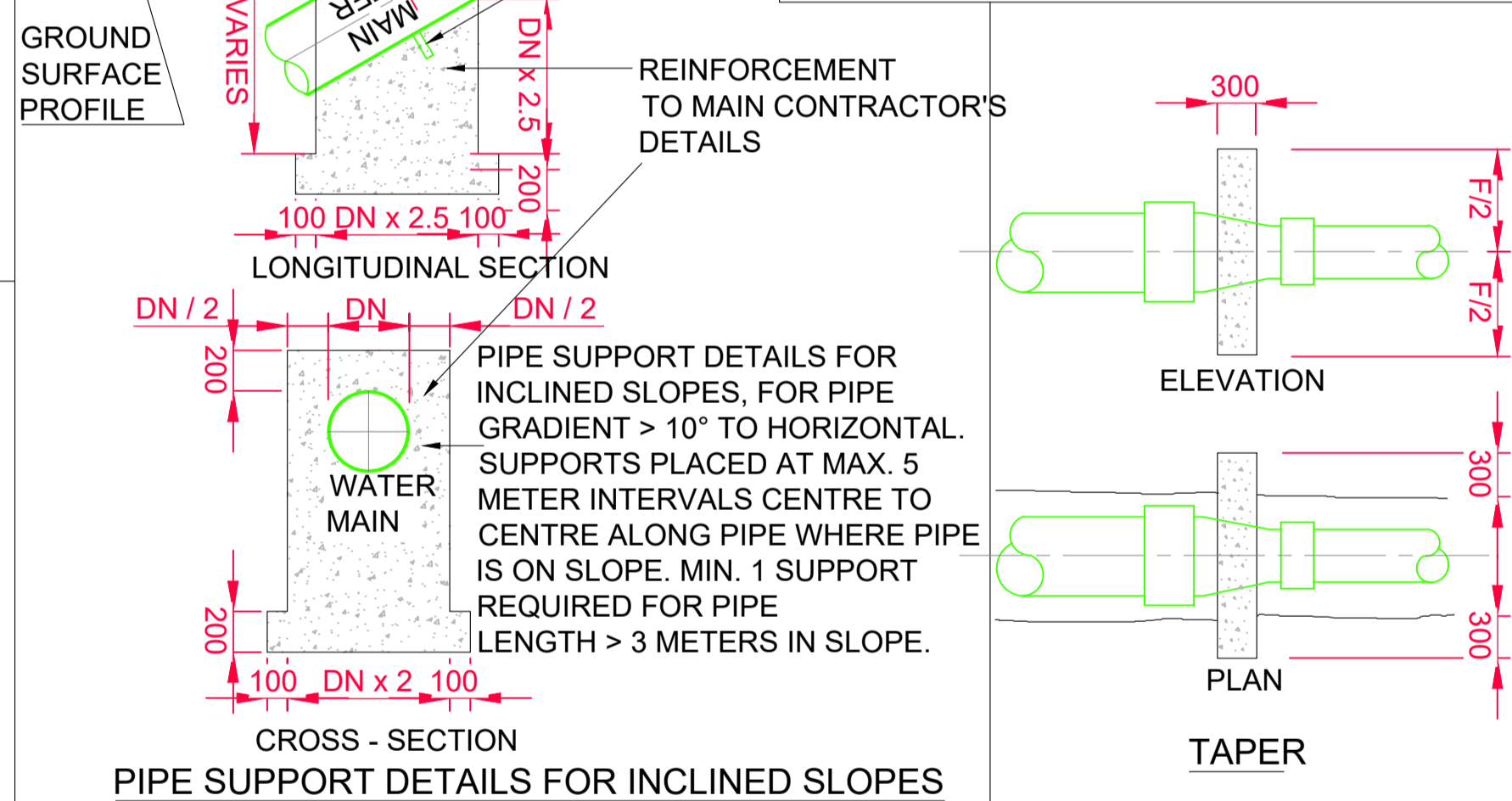
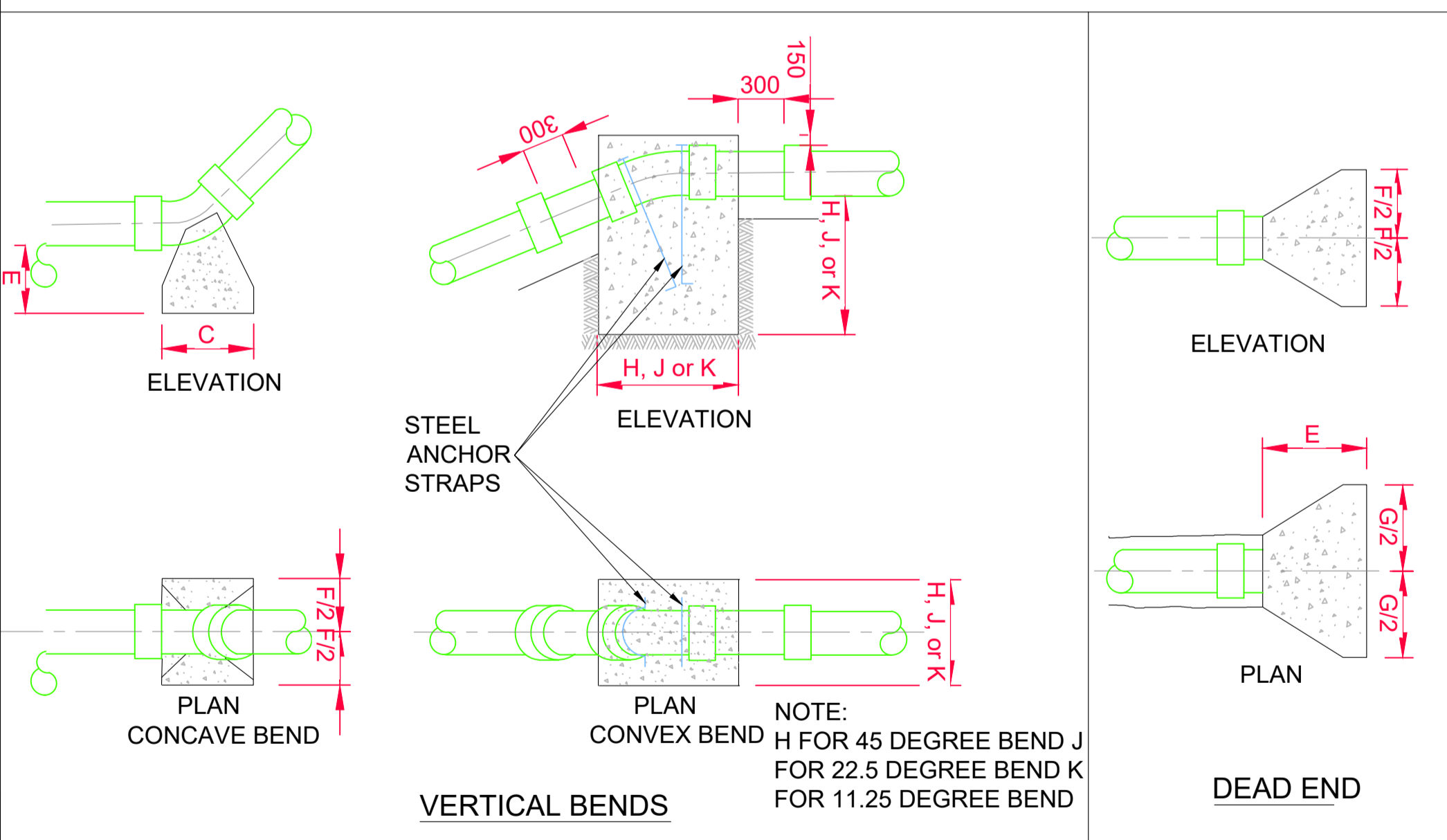
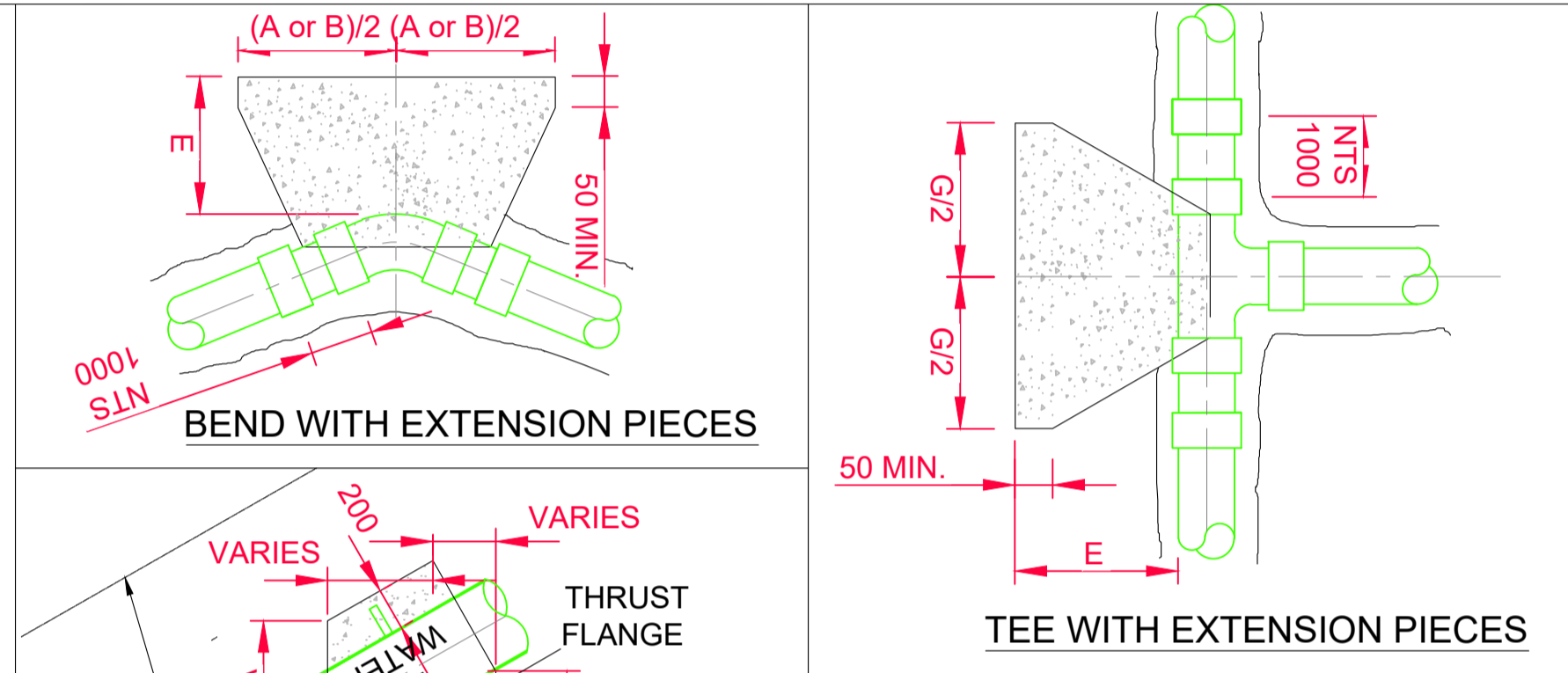
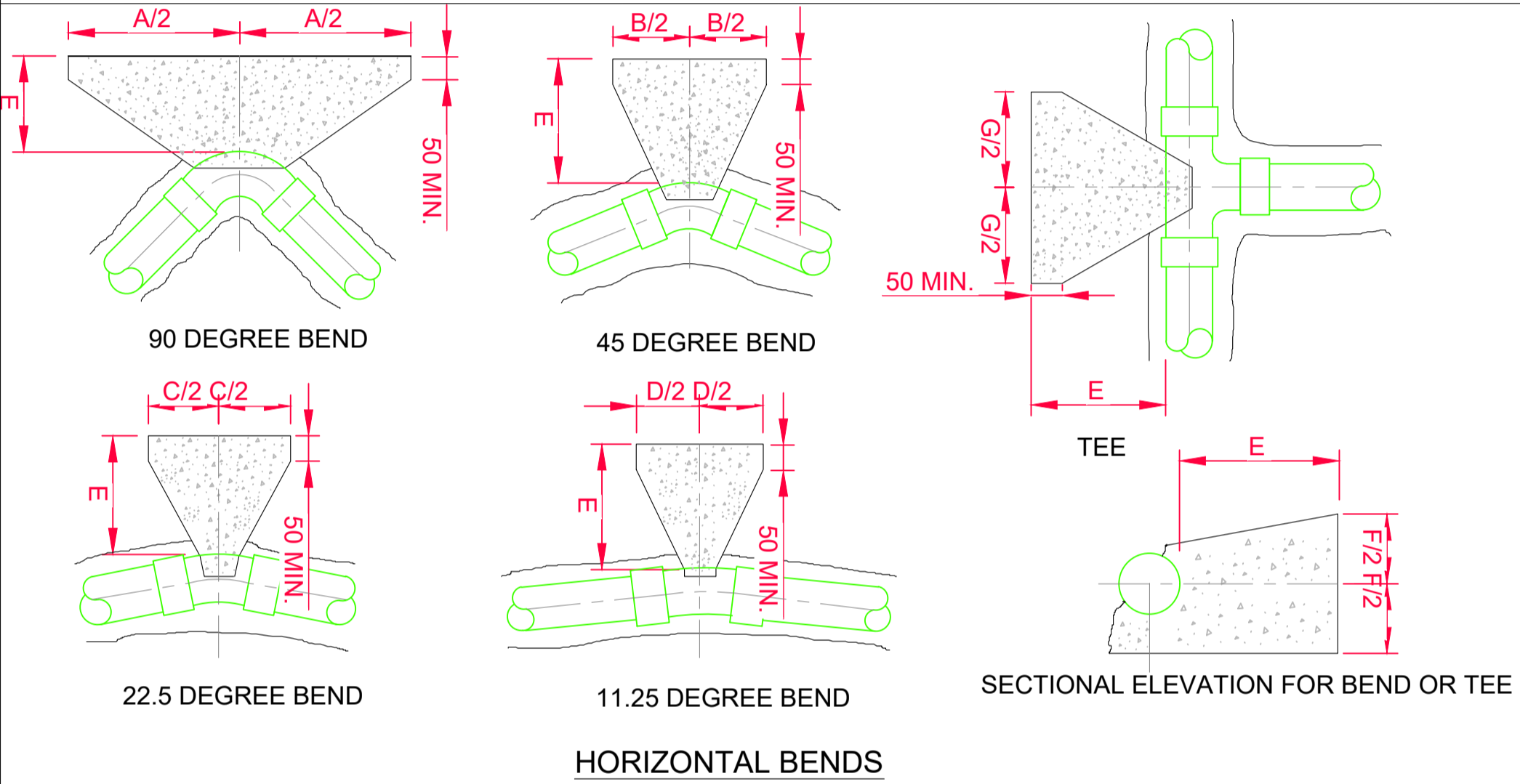


- WHERE PRACTICAL MARKER PLATES SHALL BE FIXED TO ADJACENT WALLS OR ALTERNATIVELY ATTACHED TO MARKER POSTS.
- PLATES TO BE FIXED IN POSITION USING WALL PLUGS AND STAINLESS STEEL SCREWS.
- MARKER PLATES TO BE MANUFACTURED IN ACCORDANCE WITH BS 3251.
- FOR HYDRANT PLATE ALL CHARACTERS SHOULD BE BLACK AND THE REMAINDER OF THE FRONT FACE SHOULD CONFORM TO COLOUR REFERENCE No. 309 (CANARY YELLOW) OF BS 381C.
- PIPE DIAMETER ON HYDRANT PLATE TO REFER TO WATERMAIN NOT BRANCH.
- SLUICE VALVE, AIR VALVE, SCOUR VALVE, WASHOUT HYDRANT AND METER PLATES SHOULD BE CAST IRON. ALL CHARACTERS SHOULD BE BLACK ON WHITE PAINT BACKGROUND. ALTERNATIVE MATERIAL MAY BE USED SUBJECT TO ACCEPTANCE BY IRISH WATER.
- CONCRETE SURROUND TO MARKER POST TO BE GRADE C25 / 30 AND IN ACCORDANCE WITH IS EN 206/2013.
- PLASTIC MARKER POSTS ARE NOT ACCEPTABLE.
- ALL CONCRETE TO BE IN ACCORDANCE WITH IS EN 206.

NOTES:

- GENERAL NOTES:**
- THIS DRAWING TO BE READ IN CONJUNCTION WITH ALL RELEVANT ARCHITECTS, SERVICE ENGINEERS DRAWINGS & SPECIFICATIONS.
 - ALL LEVELS ARE STRUCTURAL UNLESS NOTED OTHERWISE.
 - ALL WORKS TO BE CARRIED OUT IN ACCORDANCE WITH THE RELEVANT BUILDING REGULATIONS.
 - DO NOT SCALE - WORK TO FIGURE DIMENSIONS ONLY.

IRISH WATER - STANDARD DETAILS - WATER MARKER POSTS/PLATES - STD-W-27



< 12 BAR TEST PRESSURE

NOM. DIA. (mm)	A	B	C	D	E	F	G	H	J	K
100	600	330	160	80	200	350	390	700	600	400
150	950	510	260	130	225	450	660	900	750	600
200	1150	600	310	160	300	650	790	1050	900	700
250	1350	750	380	200	300	800	970	1200	1000	750
300	1580	850	450	220	320	950	1110	1300	1100	850
350	2100	1150	570	290	450	1000	1450	1550	1200	900
400	2550	1400	700	350	500	1050	1800	1700	1250	1000
450	3000	1630	830	420	680	1100	2130	1800	1450	1150
500	3590	1950	990	500	800	1200	2540	1950	1600	1250
600	4100	2200	1120	570	850	1400	2880	2100	1700	1300

12 BAR TO 15 BAR TEST PRESSURE

NOM. DIA. (mm)	A	B	C	D	E	F	G	H	J	K
100	700	380	190	100	200	350	510	750	600	400
150	1135	620	320	160	225	450	760	950	750	600
200	1400	750	380	190	300	650	980	1150	950	700
250	1730	940	480	240	320	800	1210	1350	1050	850
300	2090	1130	580	300	380	950	1480	1500	1200	950
350	2600	1410	720	360	500	1050	1840	1700	1350	1050
400	2980	1610	820	420	750	1200	2110	1850	1500	1150
450	3400	1840	940	470	900	1300	2330	2000	1600	1250
500	4090	2210	1130	570	1000	1400	2890	2200	1750	1350
600	5010*	2710*	1380	700	1000	1500	3550*	2350	1900	1500

15 BAR TO 18 BAR TEST PRESSURE

NOM. DIA. (mm)	A	B	C	D	E	F	G	H	J	K
100	750	400	205	100	220	400	530	800	650	400
150	1250	700	350	180	250	500	890	1000	850	650
200	1650	890	450	230	320	700	1170	1250	1000	800
250	1960	1060	540	270	350	900	1370	1450	1150	900
300	2300	1200	640	320	500	1100	1630	1650	1300	1050
350	2930	1580	830	410	750	1200	2070	1850	1500	1150
400	3510	1900	970	190*	1000	1300	2490	2000	1600	1250
450	3810	2270	1160	580	1000	1350	2970	2150	1700	1350
500	4340*	2380	1210	610	1000	1400	3700	2250	1750	1400
600	6370*	3450*	1760	890	1000	1500	4500*	2400	2050	1650

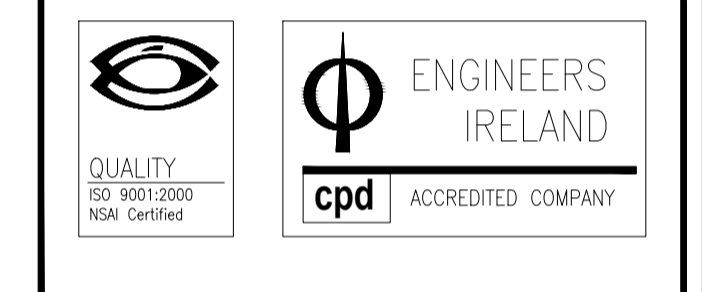
TABLE OF DIMENSIONS FOR STEEPLY INCLINED PIPELINES

GRADIENT	SPACING
1 IN 2 & STEEPER	5.5m
BELOW 1 IN 2 TO 1 IN 4	11.0m
1 IN 4 TO 1 IN 5	16.6m
1 IN 5 TO 1 IN 6	22.0m

IRISH WATER - STANDARD DETAILS - WATER MAIN THRUST AND SUPPORT BLOCKS - STD-W-28

HAYES HIGGINS PARTNERSHIP

NOT TO SCALE



Issue register

Rev.	Date	Description	Dwn.	Chkd.	Apprv.
PL1	20.04.18	PLANNING ISSUE	EH	EH	NP

Client: WATERFORD CITY AND COUNTY COUNCIL

Job Description: SOCIAL HOUSING PPP BUNDLE 2 SLIEVEKEALE, WATERFORD CITY

PLANNING

EXTERNAL DETAILS SHEET 10 I.W. STANDARD WATERMAIN DETAILS

Project No: 17KK007/SWB2	Drawing Ref: SLI-C-059	Rev: PL1
Date: 22.01.18	Scale: A1 - N.T.S.	
Drawn By: C.ZUCCO	Checked By: E.HOARE	Approved By: N.PATERSON

Hayes Higgins Partnership
Gas House Lane, Kilkenny.
056 7764710 (056) 723223 info@hayeshiggins.com
58 Fitzsimons Square, Dublin 2. (01) 4612321 (01) 4625064 admin@hayeshiggins.com

- ALL DIMENSIONS IN MILLIMETRES (mm) UNLESS NOTED OTHERWISE.
- CONCRETE THRUST BLOCKS (ANCHORAGE) SHALL BE POSITIONED SYMMETRICALLY WITH RESPECT TO THE CONNECTING PIPE & BENDS.
- TRENCH DIMENSIONS: REFER TO DRAWING No's. STD-W-13.
- THRUST BLOCKS SHALL BEAR ON UNDISTURBED SOIL. IF FOR ANY REASON THEY CANNOT THEN THE MAIN CONTRACTOR SHALL NOTIFY IRISH WATER IMMEDIATELY WITH A PROPOSED SOLUTION.
- THRUST BLOCK REINFORCEMENT REQUIRES SPECIFIC DESIGN.
- FOR TEST PRESSURES GREATER THAN 18 BAR, THRUST BLOCK DESIGN IS TO BE SUBMITTED TO IRISH WATER FOR REVIEW.
- THRUST BLOCKS ARE DESIGNED FOR AN AVERAGE BEARING PRESSURE OF 100 KN/m (TYPICAL FOR SOFT CLAY) FOR OTHER CONDITIONS. ACTUAL DIMENSIONS MAY BE ALTERED ON INSTRUCTIONS FROM IRISH WATER.
- CONCRETE IN THRUST BLOCKS SHALL BE GRADE C20/25.
- COMPRESSIBLE FILLER FOR CONCRETE PROTECTION TO BE IN ACCORDANCE WITH BS EN 622-1 AND BS EN 622-4. BITUMINOUS MATERIAL SHALL NOT BE PUT IN CONTACT WITH PLASTIC PIPES. THE THICKNESS OF COMPRESSIBLE FILLER FOR MAINS < 450mm IN DIAMETER IS TO BE 18mm.
- CONCRETE THRUST BLOCKS FOR POLYETHYLENE PIPE TO COMPLY WITH THE MANUFACTURERS REQUIREMENTS.
- POLYETHYLENE PIPES SHALL BE WRAPPED IN PLASTIC SHEETING HAVING A COMPOSITION IN ACCORDANCE WITH BS 6078 BEFORE BEING CAST INTO CONCRETE.
- ALL CONCRETE TO BE IN ACCORDANCE WITH IS EN 206.

COPY: SHBZ-SU-C5-HPP-BR-C-059 External Details Sheet 10.dwg