



15th April 2021,

To the Cathaoirleach and Members of the Comeragh Municipal District

Re: Planning & Development Act, 2000 as amended Planning & Development Regulations 2001 as amended Part VIII.

Anne Valley Walk Improvement works.

Notification re commencement of Part VIII process-For information only.

Dear Councillor,

This is to advise that Waterford City & County Council (WCCC) working in collaboration with Dunhill Tourism Walking Trail Company Limited by Guarantee intend to initiate a Part VIII process with regard to proposed improvement works to the Anne Valley Walk, Dunhill, Co. Waterford.

Project Background

The Anne Valley Walk is a 5km walk between Dunhill and Annewstown. The initial phase of the project from Ballyphilip Bridge to Dunhill Castle was completed in 2013. Phase 2 which saw the walk developed southwards to Annewstown was officially opened in 2018. Since its development the walk has proved very popular with locals and visitors alike.

Current Proposal

The current proposal is to raise a 940 metre (approx) section of the walk in the townland of Kilcannon, south of Dunhill Castle by an average of 850mm, as this section has been prone to flooding, particularly during periods of heavy rainfall. WCCC and the local community group have secured funding under the Outdoor Recreation Infrastructure Scheme in order to carry out the proposed improvement works. Please see draft scheme maps and drawings attached for information only.

Part VIII Details:

It is intended to formally initiate the Part VIII process with regard to these works before the end of April 2021. The Part VIII report which will be accompanied by scheme drawings, AA screening report, Ecological Impact Assessment Report and a Stage II-Flood Risk Assessment Report will be made available for viewing and submissions to members of the public for the prescribed period, in line with Covid restrictions.

Please do not hesitate to contact me should you require any further information or clarifications with regard to this proposed Part VIII process.

***Yours Sincerely,
Johnny Brunnock
Trails Officer, Economic Development***

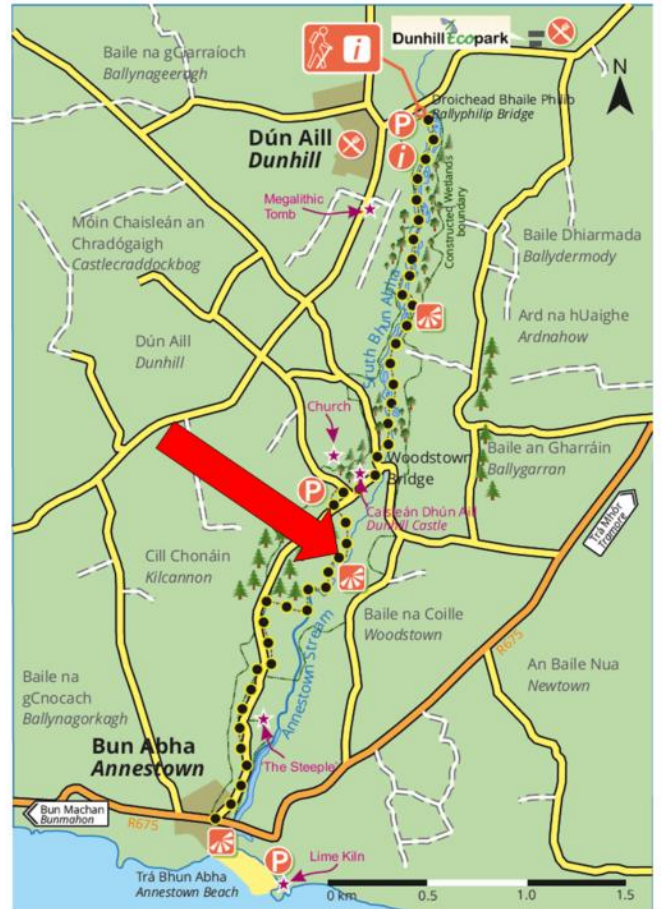
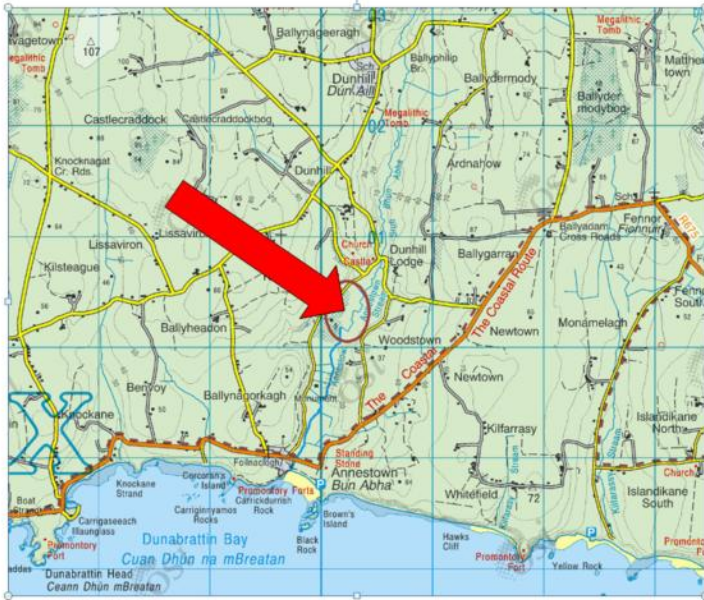
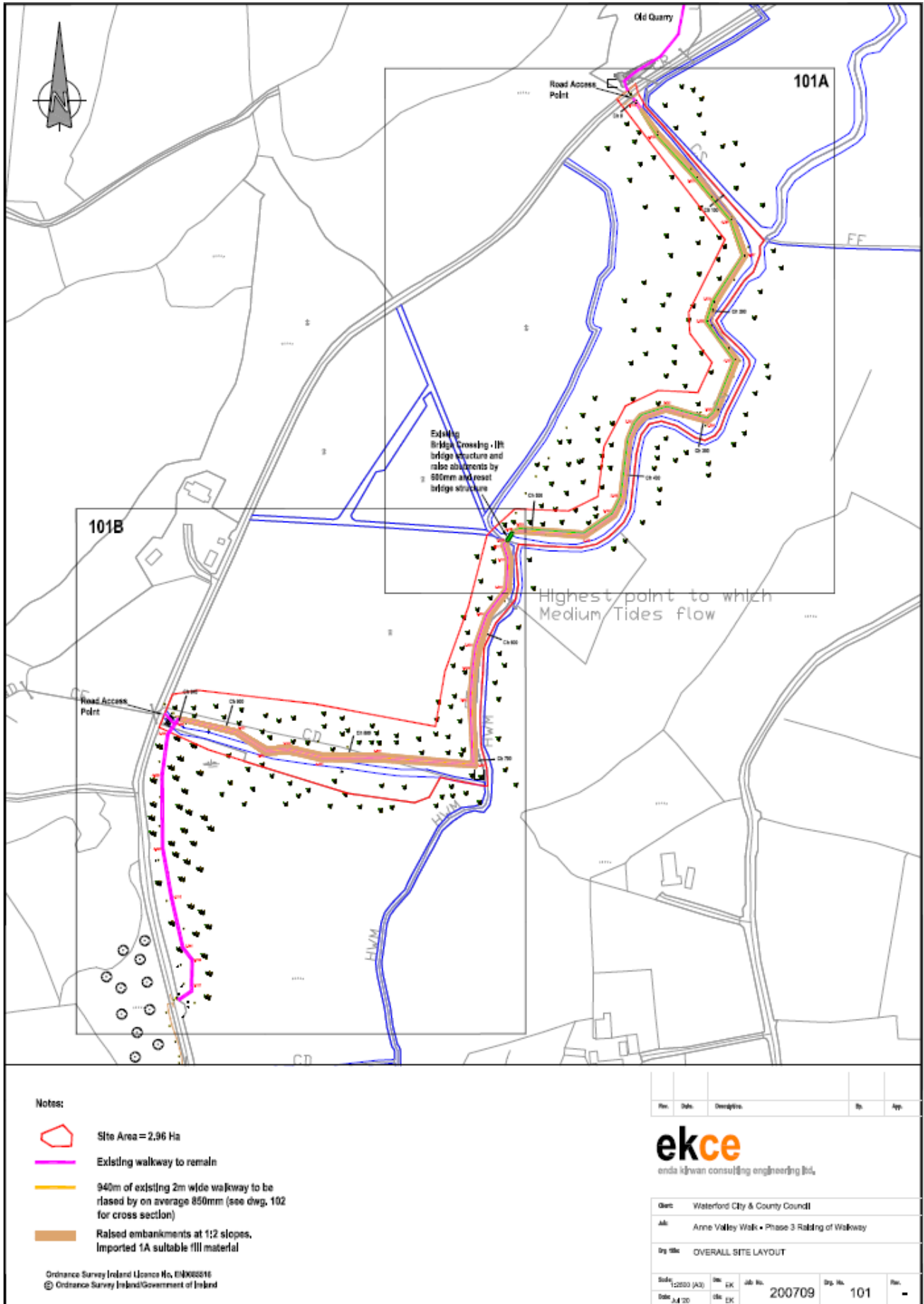


Fig 1 and 2: Approximate location of proposed improvement works on The Anne Valley Walk in the townland of Kilcannon



Waterford City and County Council, City Hall, The Mall, Waterford.

Comhairle Cathrach agus Contae Phort Láirge, Halla na Cathrach, An Meal, Port Láirge

contact@waterfordcouncil.ie

Tel : 0761 10 20 20

www.waterfordcouncil.ie