

Comhairle Cathrach & Contae Phort Láirge

Waterford City & County Council



Plenary 17th September 2020 Management Report to Council

Meán Fómhair 2020

Michael Walsh,

Príomhfheidhmeannach

September 2020

Michael Walsh,

Chief Executive

Forbairt Eacnamaíoch

Economic Development

North Quays

1. **SDZ Development**

On 10th July 2020 Falcon Real Estate Development Ireland Ltd was granted planning permission by Waterford City and County Council for almost 130,000 sq m of development within the Waterford North Quays Strategic Development Zone, comprising mixed use commercial building for tourism, retail, food & beverage and leisure, 15,000 sq m of office space, five residential buildings with 300 riverside apartments, 220-room 4-star hotel and conference centre, public open space, public realm and greenway connectivity.

2. **Sustainable Transport Bridge, Transport Hub and SDZ Access Infrastructure**

Detailed design for the Sustainable Transport Bridge, Transport Hub and SDZ Access Infrastructure Works are currently being finalised and will be reviewed with the NTA during September prior to issue. These elements will form part of the Main Construction Works as outlined below.

3. **Tender processes**

a. **Main contract**

On 3rd June 2020 tenders were received for the Waterford North Quays Project Suitability Assessment Questionnaire (SAQ) for the Main Construction Works. The tenders received have been reviewed, reported on by Roughan O'Donovan (ROD), Consulting Engineers and assessed by an Independent Assessment Board. In the coming weeks a financial due diligence assessment will be carried out on the top five tenderers as recommended by the Assessment Board. The top five qualified submissions based on the recommendations of the Board and financial analysis will be invited to stage 2 of the Restricted Procedure Process.

b. **Advanced contracts/ enabling works**

MJS Civil Engineering were appointed to undertake the Utility Diversion Works Contract, works are progressing on site and due to be complete by the end September. The Demolition Contract has been awarded to MCB Civils Ltd, site works are due to commence in mid-September.

Tenders for Waterford North Quays Transport Hub Independent Design Safety Certification by a Notified Body (NoBo) were received and have been assessed by ROD. It is expected to appoint a contractor in the coming weeks.

The Sustainable Transport Bridge Cat 3 Independent Design Check contract has been awarded to Hewson Consulting Engineers and the contract is expected to commence shortly.

Works have commenced raising sleepers and track on the South East Greenway, between Waterford and New Ross. It is also planned to issue the South East Greenway Connectivity works Contract on tenders during September.

2. Local Enterprise Office

Indicator	At end of Aug 2019 Cumulative Figure	At end of Aug 2020 Cumulative Figure
No. of Clients Met	200	300
No. of clients applying for Measure 1 support	22	17
No. of clients securing Measure 1 support	19	17
Value of Measure 1 support approved	€487,846	€375,485
No. of clients receiving Measure 2 support	917	2058
Value of Measure 2 support given	€280,916	€835,002

Other Main Supports (from 16th March to 28th Aug)

Support - <i>Figures not included in cumulative table</i>	Applications Submitted	No. of Approvals	Value of Approvals €	No. of Vouchers Fully Paid	Value of Payments €
Business Continuity Voucher	682	574	€1,366,634	286	€691,844

Support	Applications Submitted	No. of Approvals	Value of Approvals €
Trading Online Voucher <i>Figures included in cumulative table</i>	259	245	€572,551.88

Support	Applications Submitted to MFI	No. of Approvals	Value of Approvals €
Microfinance Ireland Applications <i>1 pending approval</i>	16	15	€356,000

Support - <i>Figures included in cumulative table</i>	No. of Participants
COVID Mentoring	437
COVID Training	832

4. Tourism

4.1 Waterford Trails

- **Waterford Greenway**

The calculation of estimated number of visitor trips along Waterford Greenway for 2019 took place recently. Results are displayed in the table below and are broadly consistent with those of 2018:

Waterford Greenway Visitor Trips 2018 & 2019				
	Difference 2018 to 2019			
	2018	2019	Actual change	% change
Estimated total number of Pedestrian visitor trips on the Greenway	128,689	138,447	9758	7.6%
Estimated total number of Cyclist visitor trips on the Greenway	154,814	145,567	-9247	-6.0%
Estimated total number of Combined Overall visitor trips	283,503	284,014	511	0.2%

Waterford Greenway has had a very busy summer and footfall counters are showing very high usage since Covid restrictions began to ease. Figures taken for the full June to August period of 2020 when compared to the exact same period in 2019 show a 19% increase in footfall at the counter at WIT and a 31% and 32% increase at Bilberry and Durrow respectively.

- **Outdoor Rural Infrastructure Scheme (ORIS) 2018:**

Trail projects awarded funding under ORIS 2018 including Waterford Estuary Trails (Passage East, Checkpoint and Faithlegg): Fully complete. Nire Valley Walks works are due for completion in late September.

- **Outdoor Rural Infrastructure Scheme (ORIS) 2019:**

Following Measure 2 trail projects are being funded under ORIS 2019. All currently in progress. Works to be completed by **31st August 2021:**

Name of Project	Description of Project	Location of Project	Amount of funding approved by DRCD
Saint Declan's Way	Continued development and completion of this long distance pilgrim trail to include interpretative signage, trail brochure, pedestrian counters and minor trail works.	Waterford section of SDW route from Melleray to Ardmore.	€43,440.00
Abbeyside Coastal Walk	Upgrade and development of a coastal spur off the Waterford Greenway	Abbeyside, Co. Waterford.	€66,577.60

Dungarvan Campervan Parking area and Enhancement of Waterford Greenway Play Trail	<ul style="list-style-type: none"> • Parking facilities and infrastructure to cater for Camper vans. • Improvement and addition of a number of play areas to add to Waterford Greenway's existing play trail. 	<ul style="list-style-type: none"> • Rignasillogue, Dungarvan. • Waterford Greenway. 	€101,600.00
--	---	--	-------------

Following Measure 1 trail projects are being funded under ORIS 2019. All currently in progress. Works to be completed by **30th November 2020**:

Name of Project	Description of Project	Location of Project	Amount of funding approved by DRCD
Lady Louisa's to Roundhill Walk Upgrade Works	Trail upgrade works including surfacing, drainage, new section of path and other minor works.	Lady Louisa's and Roundhill Walk (section of St. Declan's Way), Lismore	€15,960.00
Walk Waterford: Trails brochure and Promotion	New walking brochure, videography and photography of Waterford Trails to be promoted as part of Visit Waterford.	Countryside - Co. Waterford	€16,000.00
Waterford EuroVelo 1 Route Development	Ongoing development of EuroVelo 1; Atlantic Coast Route, on road cycling route in Waterford.	Waterford EuroVelo 1 Atlantic Coast Route: Youghal Bridge to Passage East via Waterford Greenway	€14,000.00
Waterford Cycling Trails	Signage improvement. Upgrade and print of Waterford Cycling brochures.	Road Cycling Trails, Co. Waterford	€14,153.60

- **Outdoor Recreation Infrastructure Scheme 2020**

Consideration now being given to potential eligible projects under ORIS 2020. Measure 1 applications close 30th September. Measure 2 and 3 applications close 30th November.

- **Funding announced for Feasibility Study: Dungarvan to Ballyduff Upper Greenway**

In late July Minister Eamon Ryan, T.D. Minister for Climate Change, Communications Networks and Transport, announced funding of €4.5m to 26 Greenway Projects. The funding was allocated under the Carbon Tax Fund 2020 and provides support for feasibility, planning and design for Greenways around the country. WCCC has been allocated €80,000 to fund project appraisal, feasibility study and route options report with regard to a Dungarvan to west of Ballyduff Upper Greenway. Cork Co Co was also awarded funding for feasibility study on a Greenway from the Cork/Waterford border onto Fermoy and Mallow. Project brief is currently being drafted.

5. Economic Development – Pilot Shop Front Improvement Scheme

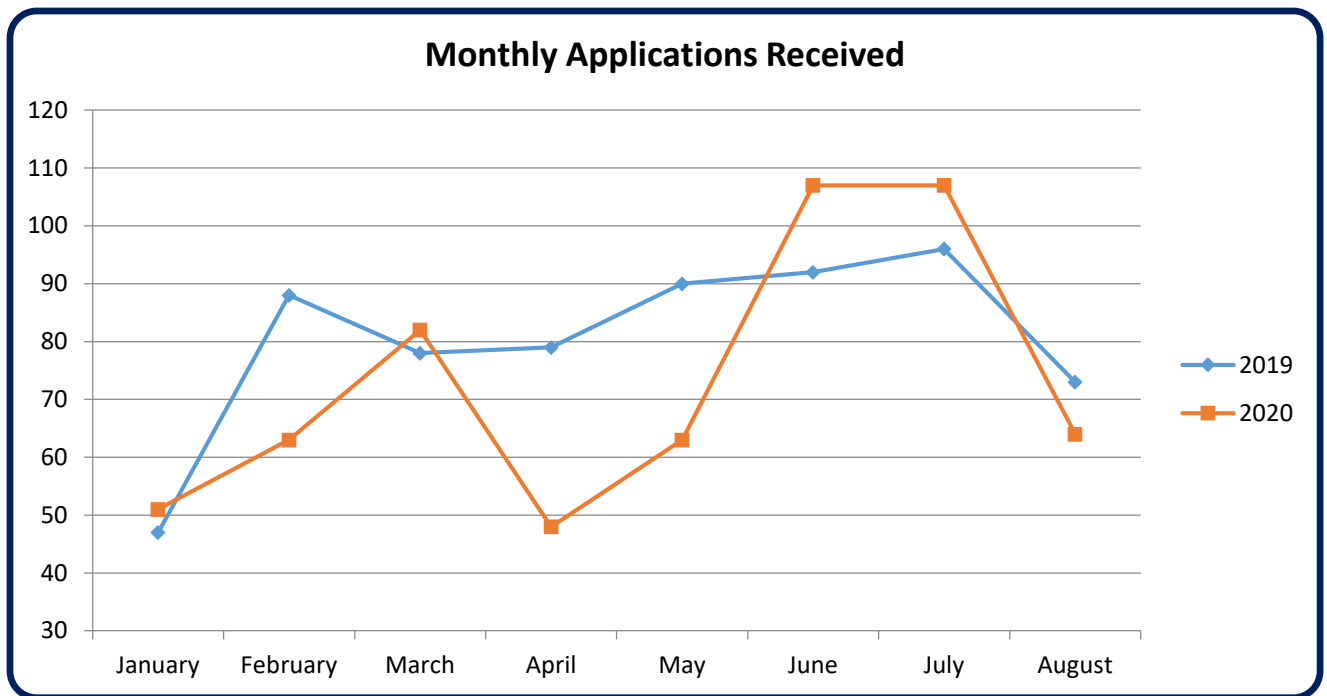
The closing date for applications under the pilot Shop Front Improvement Scheme (SFIS) was August 31st. 26 applications were received for the €20,000 budget with projects totalling over €68,000 in costs. All applicants will be notified of the status of their application by September 14th and successful applicants will be required to complete works before December 31st to facilitate the drawn down of the grant.

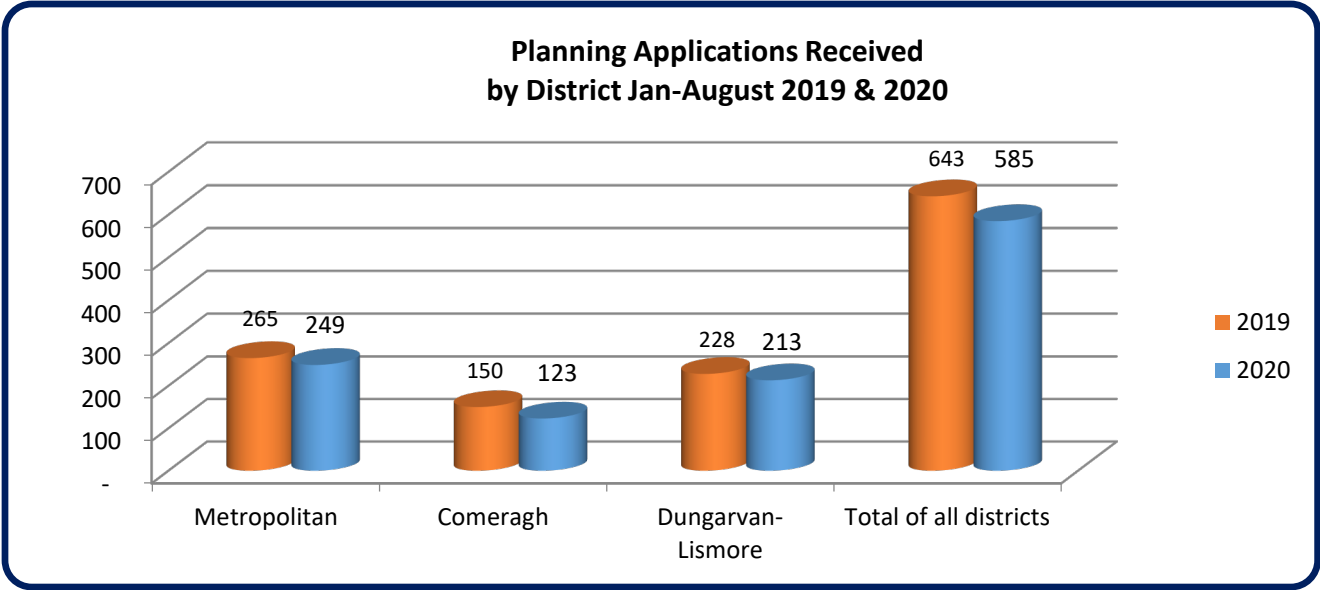
Pleanáil

Planning

Planning Applications Received – Countywide

64 Planning applications were received in the month of August countywide (up to 26th August). This compares with 73 planning applications received in the same month in 2019. Additional responses are also being received to further information requests.





Pre Planning Update- Countywide

Pre-planning meetings are being undertaken where requested by telephone.

Development Management

All technical staff have been provided with laptops and are currently working from home with minimal visits to the office (usually outside normal office hours). All planning applications are scanned to iDocs so that Planners can review applications remotely without having to be provided with a hard copy. Reports are forwarded by email and contact between planning staff and their line managers is now generally taking place by telephone rather than face to face.

Waterford City & County Development Plan 2022 – 2028 (Pre-Draft Public Consultation)

The process to prepare the new unitary Waterford City and County Development Plan commenced on the week beginning 20th July. The initial phase of this process consists of an 8-week period during which written public submissions or observations can be made. In order to facilitate public engagement and discussion, virtual town hall meetings were held on the evenings of the 18th/19th/20th August 2020. These meetings highlighted a broad range of issues such as Environment & Heritage, Local Placemaking, Economy, Agriculture Education, Research and Future Opportunities and helped to inform members of the public and community groups of the role that the Development Plan has in directing, facilitating and managing such development. The meetings also gave an overview of the development plan and its process and provided the 220 people who attended the opportunity to question the speakers which consisted of Waterford City & County Council staff, Dungarvan and Waterford City Chambers and WIT. A link to the full recordings of each public meeting, along with reports on each questions and answers session can be found on consult.waterfordcouncil.ie.

At time of writing, a total of 31 written submissions had been received as part of the pre-draft public consultation process. These submissions are published on the website of Waterford City & County Council

within 10 days of their receipt. The written submissions will form the basis of the report by the Chief Executive to the Plenary Council on which further dialogue with the Council will inform the draft development plan in due course. While date(s) have not yet been identified to engage with the Plenary Council in this regard, it is intended to hold a series of seminars with the Plenary Council throughout Q4 to discuss the content of the Report and how best to inform the draft development plan. The Chief Executive Report will be issued to the Plenary Council on or before the 19th November and the Plenary Council will then have a period of 10 weeks to deliberate on the content and recommendations of the report. A resolution by the Plenary Council will be required in January 2021 to enable the process move to the next stage of writing the draft development plan. A broad timetable for the development plan preparation process is provided below for ease of reference.

Planning SPC

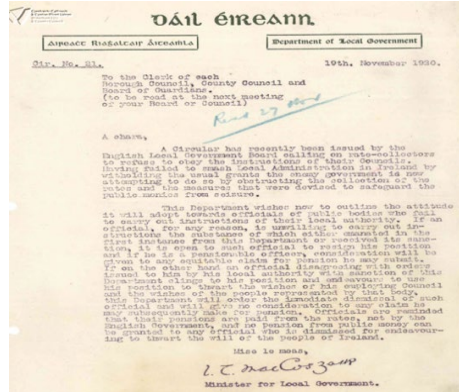
A meeting of the SPC was held in July which outlined the process for the development plan review and which discussed a number of forward planning and policy issues, namely the concept of land use zoning, the core and housing strategy including housing on the open countryside and the provision of service infrastructure across our settlements. These issues will be further discussed and explored at the next SPC.

Activity	Duration	Start	Finish
Development Plan Preparation Period.	Max 104 wks	Mon 20/07/20	Fri 15/07/22
Pre Draft Plan Public Consultation.	8 wks	Mon 20/07/20	Mon 14/09/20
Prepare CE Report on submissions and submit to Plenary Council.	8 wks	Mon 14/09/20	Mon 09/11/20
Liaise and discuss with Plenary Council and obtain Resolution on CE Report.	10 wks	Mon 09/11/20	Mon 18/01/21
Prepare a Draft Dev Plan.	12 wks	Mon 18/01/21	Mon 12/04/21
Submit Draft Dev Plan to Plenary Council and obtain Resolution.	8 wks	Mon 12/04/21	Mon 07/06/21
Notice of preparation of Draft Dev Plan.	2 wks	Mon 07/06/21	Mon 21/06/21
Public Consultation on Draft Dev Plan.	10 wks	Mon 21/06/21	Mon 30/08/21
Prepare CE Report on submissions received and submit to Plenary Council for consideration.	12 wks	Mon 30/08/21	Mon 22/11/21
Resolution of Plenary Council on CE Report and Draft Dev Plan.	12 wks	Mon 22/11/21	Mon 14/02/22
Notice of Material Alterations if necessary.	3 wks	Mon 14/02/22	Mon 07/03/22
Final Public Consultation on Material Alterations.	4 wks	Mon 07/03/22	Mon 04/04/22
Prepare C.E. Report on submissions.	8 wks	Mon 04/04/22	Mon 30/05/22
Plenary Council to consider CE Report and make Resolution.	6 wks	Mon 30/05/22	Mon 11/07/22
New Dev Plan comes into force.	6 wks	Mon 11/07/22	Mon 22/08/22

Heritage

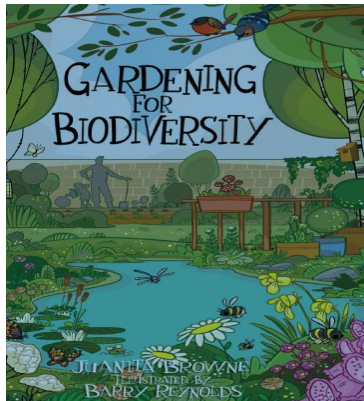
Decade of Commemorations

Live streaming of a conference on the 1920s Local Elections will take place on September 26th in accordance with public health restrictions. The conference *Waterford and the 1920 Local Elections- Fighting for a Voice and a New Ireland* will include presentations by Dr. Pat McCarthy, Emmett O'Connor, Joanne Rothwell, Christina Knight-O'Connor, Andrias O'Cathasaigh, Heather Laird and Sean Murphy



Biodiversity

Additional funding has been notified by the Biodiversity Policy Section of the Department of Culture, Heritage and the Gaeltacht under the July Stimulus Package and the outcome of Waterford's funding application will be known in September. Projects submitted include wildlife signage, invasive species awareness and Brent Geese monitoring.



Heritage Week

Heritage Week ran from August 15th-23rd with a focus on projects and virtual presentations rather than public events. A digital version of the Historic Towns Atlas for Dungarvan was launched by the Royal Irish Academy and the Irish Times Magazine included Waterford City in their feature on Architectural Gems around the country



Bóithre agus Iompar

Roads and Transportation

Road Works Programme 2020

Our annual Road Works Programme is substantially complete at this stage. Over 120 strengthening and surface dressing jobs have been completed with only a small number of works remaining and these will be finalised by the end of September. From October the Machinery Yard will commence work on the LIS and CIS projects. Low Cost Safety Schemes are also continuing and are expected to be finish towards the end of October. Bridge Maintenance work is also underway and will continue into mid-November.

CLÁR 2020/21

A submission for the CLÁR programme in respect of Measures 1 & 2 was sent to the Department of Rural and Community Development for the deadline date of Friday 28th August. The timeline for assessment and decision by the Department is end of October 2020.

July Jobs Stimulus Measures

The *National Transport Authority NTA* has allocated a total of **€2,347,500** for projects at various locations throughout the City to support pedestrian and cyclist movement and to enhance accessibility. The funding is targeted at supporting our response to Covid-19 challenges and assist with our work to equip local communities and businesses with improved walking and cycling infrastructure. The funding will also allow for changes to traffic management arrangements to facilitate the reallocation of overall road space to improve facilities and safety for pedestrians and cyclists. The Department of Transport, Tourism and Sport also announced similar funding measures on 31st August 2020 under the following measures for Waterford:-

Active Travel Measure Allocation €1,249,000

The Active Travel grant scheme aims to improve walking and cycling infrastructure as well as stimulating local employment. Projects include footpaths and cycle ways that allow children to walk/cycle to school and to local sport clubs. Projects also include the dishing of footpaths and pedestrian crossings that improve access to local amenities and links to public transport and improvements to town and village centres that will support our hard hit retail and hospitality sectors.

Climate Adaptation Allocation €440,000

The Climate Change Adaptation grants being provided aim to help local authorities to deal with the essential repairs needed in the aftermath of the severe weather but also to take steps towards making road networks more resilient in the longer term. This funding is aimed at alleviating flooding to roads and property, including works to improve embankment stability to prevent slippage, drainage works, essential road repairs associated with severe weather and bridge strengthening and repairs.

Schemes are currently being assessed under all of the approved measures and a programme of work will be prepared and brought to each of the September District Council meetings for review.

Tithíocht / Seirbhísi Éigeandála

Housing / Emergency Services

Housing Applications

Housing applications	July and August 2019	Total Number of Applications Year 2019	July and August 2020	Total Number of Applications Year To Date 2020
Applications received	161	668	203	788
Applications assessed (incl files carried forward from previous month(s))	193	850	283	847
Applications validated (incl files carried forward from previous month(s))	113	457	126	515
Approved for social housing supports following interview with applicant	106	485	120	451

Housing Allocations

District	Tenancies during July & August 2019	Cumulative No. of Tenancies 2019	New Tenancies during July & August 2020	Refusal No. of New Tenancy offer	Cumulative No. of New Tenancies 2020
Comeragh Municipal	4	18	0	2	2
Dungarvan/Lismore Municipal	11	80	6	6	19
Metropolitan	16	254	29	6	94
Voluntary Bodies	3	32	3	0	22
Totals	34	384	38	14	137

Choice Based Letting (CBL) Scheme

The total number of properties advertised on the CBL system to date is 655. There have been 154 refusals on properties to date.

Housing Loans applications

2020 Housing Loans	Applications received	Applications awaiting further info	Applications refused	Applications approved	Applications with Housing Agency/deferred for 6 months
July & August	7	2	3	5	3
YTD	27	2	16	12	5

Tenant Purchase applications

2020 Tenant Purchase	Applications received	Applications awaiting further info	Applications refused	Applications approved	Sales Closed
July & August	14	4	2	8	2
YTD 2020	39	8	11	20	7
YTD 2019	59	17	12	30	21

2 Tenant Purchase sales closed in July and August-
2 in Waterford City South

Housing Assistance Payment

Housing Assistance Payment	July & August 2019 HAP tenancies	July & August 2020 HAP tenancies set up	2020 no. of Active HAP Tenancies set up	Cumulative no. of HAP Tenancies Set up to date	Cumulative no. of Active HAP Tenancies to date
HAP Tenancies	95	91	32	3,580	2,100

Inspection of private rented dwellings

July & August	No
RTB Register	1
Compliant	0
Non-Compliant	1
HAP	17
Compliant	0
Non-Compliant	17
Re Inspection	5
RAS	2
Compliant	1
Non-Compliant	1
Re Inspection	1
Long Term Lease	21
Compliant	6
Non-Compliant	15
Re-inspection	4
Other	2
Mortgage to Rent	3
Total	50

In July and August, Waterford City & County Council carried out 272 planned and reactive inspections of our housing stock. As a result of these inspections 37 properties have had improvement works carried out to meet the standards for rented accommodation.

Housing Adaptation for People with a Disability, Housing Aid for Older People and Mobility Aid Grants

Grant Scheme Amount	Number of applications approved July & August 2020	Value of applications July & August 2020	Cumulative number of applications approved 2020	Cumulative value of 2020 applications
Housing Adaptation for People with a Disability. Max. €30,000	8	74817.44	33	353,199.77
Mobility Aids Scheme Maximum €6,000	6	30668.36	33	186,026.36
Housing Aid for Older People Maximum €8,000	8	26494.68	38	163,259.03
Total	22	131980.48	104	702,485.16

Homeless Services

Waterford Integrated Homeless Services (WIHS) (Opened 25th February 2019)	July and Aug 2020	July and Aug 2019
Number of callers seeking services in WIHS up to 21/08/20 (3,379 callers in total in 2019)	666 (2,439 TTD)	746 (2,067 TTD)
Number of presentations to WCCC Homeless Services up to 21/08/2020 (1,219 presentation in total in 2019)	214 (830 TTD)	218 (641 TTD)
Number of Formal Homeless Assessments up to 21/08/20 (*Total to date)	130 (469 TTD)*	57 (580 TTD)
Emergency Accommodation (EA)	July and Aug 2020	July and Aug 2019
Number of Single Persons in EA	85	102
Number of Families in EA	13	21
Number of children in EA	30	42

Exits from Emergency Accommodation (EA) (Not Recorded in 2019)	July / Aug Singles	July / Aug Families
Number of exits from EA	24	0
Number of exits from EA to a new tenancy	5	0

HAP Place Finder Service	July / Aug 2020	Cumulative (06.11.18 to 21/08/20)
Number of approval letters issued 26 th June to 21 st Aug 2020 (257 approval letters issued to 31/12/2019)	42	443
Number of HAP Place Finder Tenancies HUB Complete (117 tenancies set up to 31/12/2019)	31	250
Number of HAP Place Finder Tenancies currently being processed (as at 21/08/20)	25	N/A

Housing First Programme	Tenancies
Number of Housing First tenancies in place at 21 st August 2020 (Target = 30 by June 2021)	21

Homeless preventions, supported exits and sustained tenancies continue to be the priorities for Homeless Services in 2020. This will be achieved by continuing our partnership and collaborative working with the

HSE and the various Homeless Service Providers in Waterford and by utilising our various projects in WIHS including our Homeless Prevention & Support Service, Advice & Information Service, Tenancy Support & Sustainment Service and the Housing First Service.

Capital Projects

Housing Capital Schemes - WCCC Projects				
Project Location	Units	Area	Current Position	Comment
The Glen Waterford	17	Metropolitan	Appraisal/Design Stage	Stage 2 Approved. Revised proposal to be brought to Council workshop
Summerland Square Waterford	12	Metropolitan	Tender Design	Tender Q3 2020.
Ardmore Park / Priory Lawn	5	Metropolitan	Construction	Construction in Progress
Larchville	5	Metropolitan	Construction	Construction in Progress
Dungarvan Ballinroad	21	Dungarvan-Lismore	Construction	Completed
Tramore An Garran	50	Metropolitan	Tender Design	Tender Q3 2020
Doyle Street	4	Metropolitan	Construction	Construction in Progress
Slievekeale	58	Metropolitan	Construction	Construction in Progress
Mount William, Williamstown Rd	65	Metropolitan	Turnkey	Construction in Progress
Clarendon Court	24	Metropolitan	CPO	Negotiations with owners on-going – potential Repair and Lease Scheme
Lacken	55	Metropolitan	Construction	34 Units completed. 21 units completion Q3 2020
Ballynaneashagh	22	Metropolitan	Tender Design	Part 8 approved
Ballygunner	49	Metropolitan	Tender Design	Tender Q4 2020
Kilmacthomas	16	Comeragh	Tender Design	Tender Q4 2020
Mount Esker, Ballytruckle	14	Metropolitan	Tender Design	Part 8 approved.
Estuary Heights, Shandon, Dungarvan	20	Dungarvan/ Lismore	Completed	Completed
Railway Gardens, Lismore	17	Dungarvan/ Lismore	Construction	Construction in Progress
Mount Suir, Carrickphierish	18	Metropolitan	Completed	Completed
Brideview Close, Tallow	2	Dungarvan/ Lismore	Completed	Completed
Barnes Lane, The Glen	2	Metropolitan	Completed	Completed
Part V	26	Countywide	Various Stages	Delivery On-going 2019 – 16 2020 – 10 (est)
Repair and Lease	151	Countywide	Various Stages	Delivery on-going

				2019 – 41 2020 – 60 (est) 2021 – 50 (est)
Leasing	130	Countywide	Various Stages	Delivery on-going 2019 – 30 2020 – 50 (est) 2021 – 50 (est)
Buy and Renew – Barker Place	16	Metropolitan	On site	Completed
Buy & Renew – Thomas Court	11	Metropolitan	Tender Preparation	Works Tender Q3 2020
Buy & Renew – Manor Court	4	Metropolitan	Completed	Completed
Buy & Renew – 42/43 Doyle Street	2	Metropolitan	On Site	Construction in progress
Buy & Renew – Countywide	8	Countywide	Tender Preparation	In progress
Total Units in WCCC Projects 824				
Housing Capital Schemes - Approved Housing Body Projects				
Project Location	Units	Area	Current Position	Comment
Tramore, Ballycarnane <i>Tramore Voluntary Housing</i>	18	Metropolitan	Design Stage	Awaiting progress from AHB.
Dunhill <i>Gleann Ealach</i>	8	Comeragh	Design Stage	Planning refused
Powersfield, Hennessy's Road <i>Focus Ireland</i>	3	Metropolitan	Design Stage	Awaiting progress from AHB
The Paddock's <i>Anvers/Acquired Brain Injury Ireland</i>	9	Metropolitan	Construction	Completion Q 3 2020
Wadding Manor, Ferrybank <i>Respond!</i>	10	Metropolitan	Design Stage	Completion Q4, 2020.
Kilbarry, 6 Cross Roads <i>Respond!</i>	69	Metropolitan	Appraisal	Completed
Fairfield Park <i>Circle VHA</i>	40	Metropolitan	Construction	Completed
Total Units in Approved Housing Body Projects 157				

Refurbishing of houses becoming vacant for re let:

July & August 2020	Metro	Comeragh	Dungarvan / Lismore	TOTAL
Handed Over / Works Completed	3	2	4	9
Newly vacant	8	1	3	12

Compulsory Purchase Orders

In compliance with the Council's Vacant Homes Action Plan, Waterford City & County Council have an ongoing programme to deal with property vacancy that currently involves sixteen (16) Compulsory Purchase Orders that target twenty (20) individual properties. So far, all sixteen (16) of these Compulsory Purchase Orders have been confirmed by An Bord Pleanala. These properties have all been identified as

vacant, in private ownership and are located countywide. It is proposed to extend the initiative to reduce vacancy to all areas of the county.

Community Services

Rural Development Programme:

- Applications for Leader grant funding: Applications have now been evaluated and 6 recommendations are being sent to the LCDC for consideration and decision at the September meeting.
- The total sum for projects being recommended at the LCDC meeting in September is €850,000.
- A further three projects are being evaluated for the October Meeting. One of the three projects is a transnational with Northern Ireland. Expected value €260,000
- For the November LCDC there will be another 6 applications. Total value estimate €450,000
- Payments to projects already commenced is proceeding. €3.4m paid out to date. €600,000 due to be paid out over the coming months.
- 3 Festivals deferred to 2021 – Camphire, Blackwater Opera Festival and West Waterford Food Festival
- Covid19 has not caused substantial delays in completing approved projects.
- A virtual targeted call with 20+ prospective applicants was held using Microsoft Teams on 18th of August. A virtual Training Session for applicants will be held on the 28th August
- While not funded by RDP, St Declan's Way will be Regional Trails Office approved by late September 2020

Supporting Waterford Community Fund 2020

All groups have received their grant payment with the exception of two groups who have to submit their tax clearance details.

Community Enhancement Programme 2020

Waterford Council received €64,039 from the Department this year, which is a substantial reduction from last year (€144,499). The CEP is to provide funding to community groups across Ireland to enhance facilities in disadvantaged areas. The closing date was 14th August and 156 applications were received. The Assessment Group shall review all applications on 3rd September and submit their recommendations to the LCDC for the meeting on the 10th September.

Community Enhancement Programme – Community Centre & Community Buildings

The fund is being made available under the Government's July Stimulus package and is to be provided through the Community Enhancement Programme (CEP). Waterford Council has received €165,006 under this scheme. The LCDC shall set the closing date and criteria at the LCDC meeting on 10th September. It is expected that the scheme will be advertised before end of September.

Community Mental Health – Small Grant Scheme

Waterford LCDC has a Community Mental Health Fund of €30,000 for a small grants scheme. The funding is for local community, voluntary and sporting organisations to deliver actions or projects which are in line with the Mental Health theme of Healthy Ireland (€2,000 - €5000 per action). The LCDC shall set the closing date for applications at their meeting on 10th September.

COVID-19

➤ *Emergency Fund*

Waterford Council received €73,177 from the Department of Rural & Community Development under this fund. Community groups who are involved with Waterford Covid 19 Community Call are eligible to apply for this fund. To date 36 groups have received funding, with 8 of those groups receiving an additional allocation.

➤ Covid 19 Community Response Forum continues to meet on a monthly basis

Comhairle na nÓg:

The young people continue to meet regularly using Zoom. Their project in the area of Climate Change has been completed. Development of an App is underway for use by young people with the aim of pushing reminders for good Environmental practises and limiting environmental impacts of their daily lives. In addition, preparation for the AGM will be getting underway shortly.

Pride of Place:

Adjudication by way of conference call took place on 25th August for Dunhill Community Tourism (Anne Valley Walk) and on 27th August for Larchville/Lisduggan Residents Association. Both adjudications went well.

Waterford Age Friendly Programme:

Most thematic sub-groups have now restarted following Covid 19 with initiatives/projects identified progressing again.

Healthy Waterford:

Projects under Healthy Ireland Round 3 delayed on account of Covid 19. Funding received is supporting initiatives including active community initiatives, disability actions, social farming and mental health.

Healthy Waterford LCDC subcommittee is co-ordinating #Inthistogether survey currently underway whereby community, sporting and voluntary groups involved in the Waterford Covid 19 Community Call are being asked to share their experiences of helping out vulnerable members of the community.

Waterford Migrant Integration Strategy

The three-year strategy was adopted by the Plenary Council at its meeting on 29th July.

PPN

716 groups registered with the PPN: 574 Community pillar; 117 Social Inclusion pillar; 25 Environment pillar.

JPC:

Next meeting due to be held on 12th October.

Social Inclusion:

SICAP

Covid 19 has had an impact on the operations of the Programme Implementer, Waterford Area Partnership. Progress on engaging with and animating community and voluntary groups remains strong and on target for full year target achievement, but working with individuals has proven to be more challenging, as could be expected. The PI has been engaged and very active in the Community Response Forum for Waterford and continues to support Covid 19 responses across City and County

TIG

The Waterford Traveller Interagency Group continues to meet regularly

SeirbhísiEigeandala

Emergency Services

Fire Service Operational Activity:

Total call outs to incidents attended by the 10 fire stations of the Fire Authority are shown for the year to date and for the month of July and August. Emergency response has continued uninterrupted throughout the Covid 19 crisis with significant precautionary measures put in place to ensure the safety of fire crews and the community served.

Area	Fires	Special Service	False Alarm Good Intent	False Alarm Malicious
Metropolitan	61	55	28	4
Comeragh	7	10	6	0
Dungarvan/Lismore	21	54	5	0
Total for July & August	89	119	39	4
Year to date	478	310	118	13
<i>Total for July & August 2019</i>	141	75	38	1
<i>Total for 2019</i>	734	428	181	11

Fire Safety:

The following applications for fire safety certificates have been received with comparison shown for the same period last year

Applications Received	JULY & AUGUST 2020	2020 Year to date	Total for July & August 2019	Total for 2019
Fire Safety Certificates	7	52	22	113

Building Control:

New functions associated with the Building Control Regulations, introduced on 1st March 2014, are being delivered within Emergency Services. Notices and applications associated with these regulations are shown below.

Application/Notification	July & August 2020	Cumulative Total for 2020	Total for July & August 2019	Total for 2019
Commencement Notices	43	180	62	339
Completion Certificates	35	112	35	236

Disability Access Certificates	6	27	18	83
--------------------------------	---	----	----	----

Civil Defence:

Civil Defence activities during the month of July and August 2020 consisted solely of Covid-19 Response duties.

Essential Tasks undertaken were:

- PPE training.
- Vehicle preparation.
- Vehicle Cleaning and Decontamination.
- Mission Planning and Communications.
- Patient Transportation.

Patient Transportation was provided by Civil Defence volunteers to members of the community with no other available means of transport. This was only made possible by the cooperation and dedication of Civil Defence.

Transportation tasks included to and from:

- Nursing Homes.
- Clinical appointments (e.g. doctors, dental, radiotherapy, etc).
- Hospital Appointments in South Tipperary General Hospital Clonmel, Cork CUH, Waterford UHW and Whitfield.

At all times stringent measures were put in place to ensure the safety of Civil Defence volunteers and those members of the community served.

Planning is currently underway to investigate the feasibility of a return to training.

Ealaíona & Cultúr

Arts & Culture

In August 6 branches were open to the public, 10,252 people visited libraries throughout the County and borrowed 19,712 items during the month. Active membership of the Library Service for August was 15,258. In August 49 service wide online activities and events took place including;

- Heritage Week including online talk by Library staff
- Right to Read Summer Stars Reading Adventure including online storytelling by library staff
- Promotion of community events and activities

Upcoming Online Events in September:

- Culmination of Right to Read Summer Stars Reading Adventure
- Positive Ageing Week
- Culture Night Events and Activities

Library Development:

- Online, Radio Interview and newspaper advertising of browsing services, eServices and online events and activities
- Adaption of Library buildings to Covid-19 Compliant Health and Safety precautions
- Staff online training and development: Tusla Children First Certificate, Age Friendly Communications Training, Borrowbox App training for Staff, CILIP Leadership training, MS Powerpoint training, WCCC City and County Development Plan – Place Making Webinar, WRAP Wellness Recovery Action Plan, Dementia and the Arts and training on Charities Governance Code
- Library Building Upgrades: new windows installed in Dunmore East, window sashes and bathroom taps replaced in Central Library, Portlaw courtyard cleaned, outdoor lighting installed for Lismore Library, Live Occupancy Control tracking system installed in Carrickphierish Library

Seirbhísí Comhshaoil

Environmental Services

Environmental Enforcement Statistics

Enforcement under the Litter Pollution Acts 1997 (as amended)

1st January 2020 – 31st August 2020.

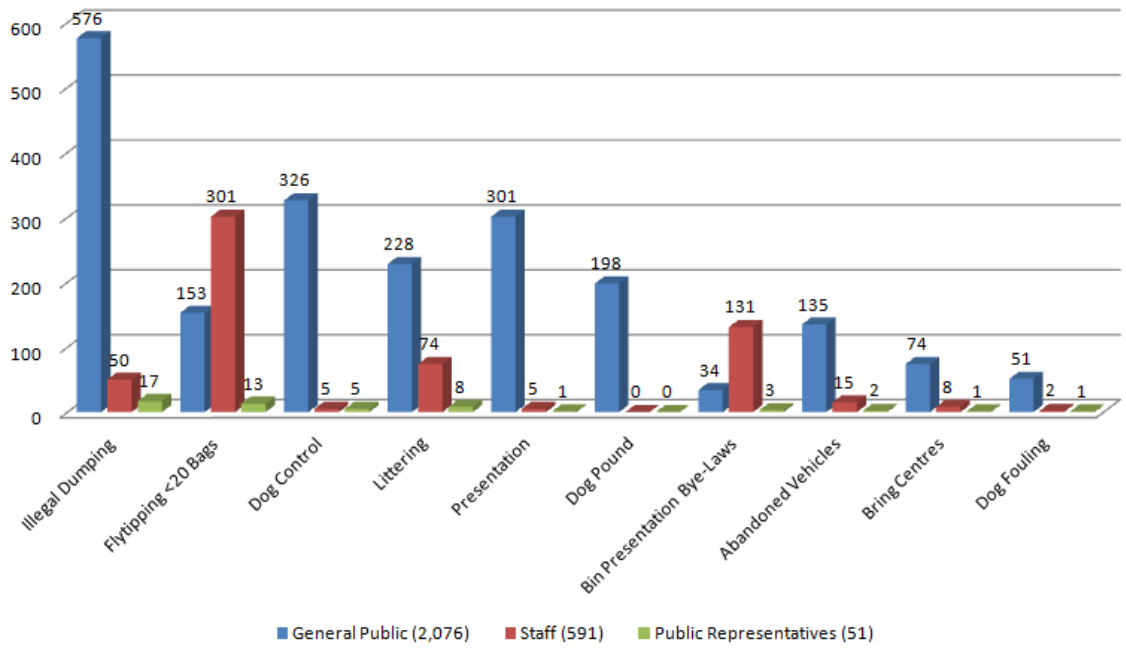
Legal Action Initiated	9
On the Spot Litter Fines Issued (Pending Payment or Prosecution)	155
On the Spot Litter Fines Paid (Includes Fines previous years)	70
No of Notices Issued Under Sections 9,16,17,20	0

Enforcement under the Waste Management Acts 1996 (as amended)

1st January 2020 – 31st August 2020.

No of Complaints	2111
Legal Actions	4
Section 18's Statutory Notices Served (asking for info on Waste Issues)	1
Section 55's Statutory Notices Served (asking for Waste to be removed in a 2 week period)	19
Section 71's (Abandoned Vehicle Notices)	77
Warning Letters Sent (Packaging Info & Notice Follow Up)	92
Section 14 Directions	6
Section 107 EPA (Noise)	0
Fixed Penalty Notices on Waste Collectors	0
Regulation 33 - Requirement on a Registered Owner to deposit an End-of-Life Vehicle at an Authorised Treatment Facility. (European Union End-of-Life Vehicles) Regulations 2014 – Fixed Penalty Notice.	1
Regulation 25 of the European Union (Packaging) Regulations 2014 (S.I. No. 282 of 2014) as amended	0
Questionnaires issued under the Household Bin Presentation Byelaws (2018)	903

The following graph indicates the top ten categories of CRM cases assigned to the Environment Department in the period January to August 2020. CRM cases notified to Waterford City & County Council by the public are recorded as "General Public" and are shown in blue on the graph. Cases which originated from environmental enforcement staff are recorded as "Staff" and are shown in purple on the graph. Cases which originated from Public Representatives are recorded as "Public Representatives" and are shown in green on the graph. Environmental enforcement officers continue to investigate complaints received and monitor illegal waste issues, littering, dog fouling, fly-tipping, and illegal signage and issued litter fines where offences are detected. The Waterford City & County Councils Dog Wardens continue to investigate all dog control issue throughout the City & County.

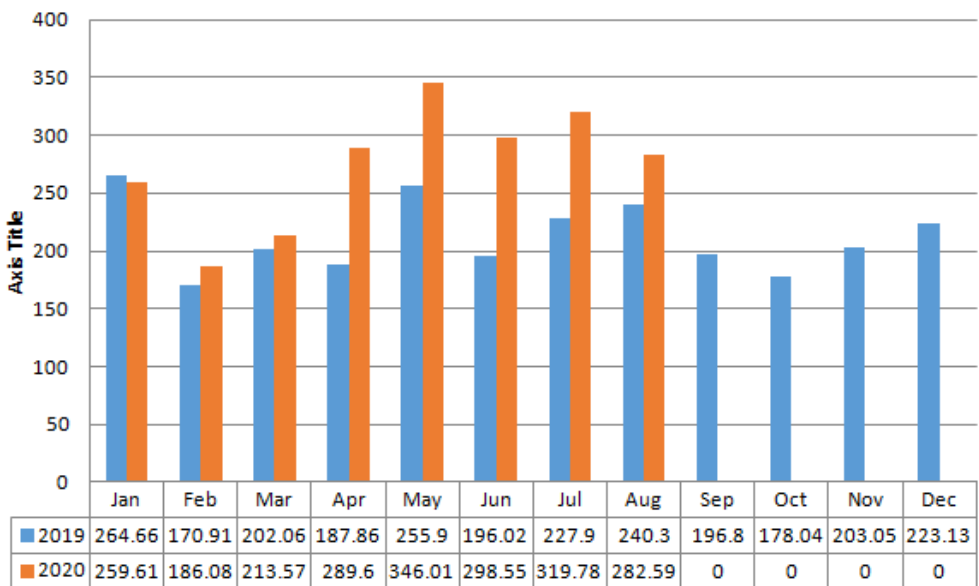


Bottle banks during the Lockdown

Following the lockdown as a result of the Covid-19 Pandemic, the amount of glass being deposited at bring banks increased considerably with an average increase of 45% of glass deposited over the summer months. This has resulted in pressure on bottle banks as our collection contractor has struggled to cope with this increased usage.

The contractor has increased his number of visits to our 66 bring banks, with a total of 757 collections since March, up from 567 collections for the same period last year to meet this increased demand.

Tonnes of Glass Collected



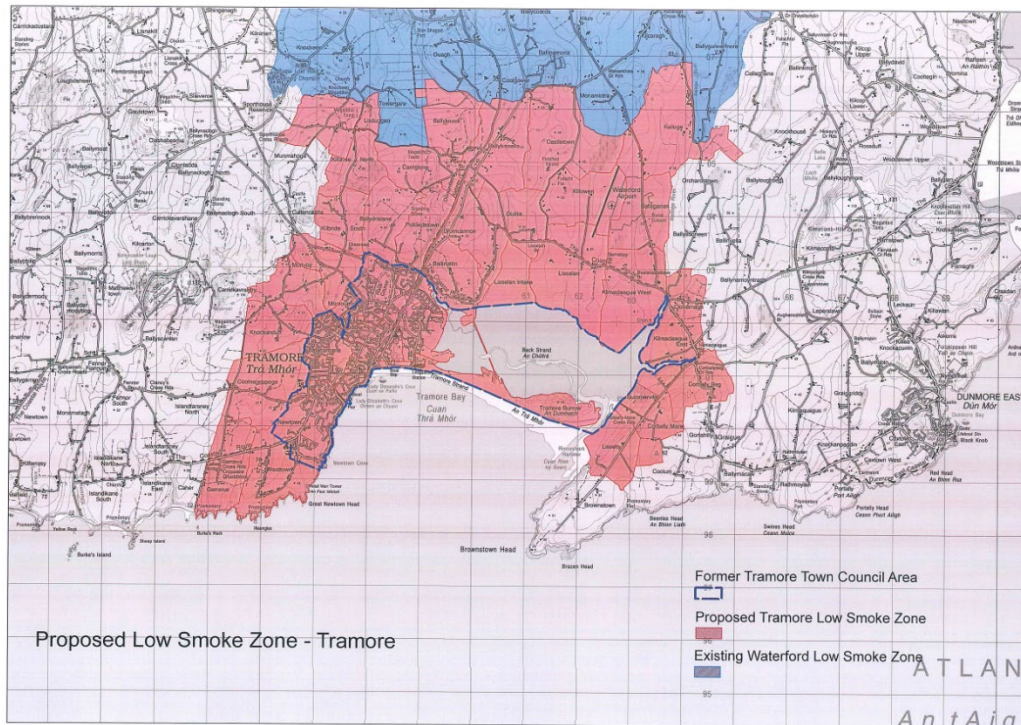
Extension of low smoke zone to include Tramore

New regulations introducing a low smoke zone came into effect from 1 September 2020. These regulations provide for an extension of the smoky coal ban to towns over 10,000 populations and prohibit the marketing, sale and distribution of smoky coal within this area. It also prohibits the burning of smoky coal within the area (see map below).

The areas selected to be part of the low smoke zone include areas outside but close to the immediate town from where fuel may be supplied to customers within the town.

Waterford City & County Council are primarily responsible for the enforcement of the smoky coal ban within its functional area. The enforcement powers available to the council are extensive. For example:

1. i. local authority staff may undertake inspections of premises and vehicles being used for the sale and distribution of solid fuel as well as collect samples;
2. ii. a local authority may bring a prosecution under the Air Pollution Act for breaches of the Regulations
iii a Local Authority may issue a Fixed Payment Notice (or 'on the spot fine') for alleged offences relating to the marketing, sale and distribution of prohibited fuels in Low Smoke Zones (LSZs), with a penalty range of €250 to €1000.



Environmental Education & Awareness

Waste prevention

Environmental workshops will be available online or as part of virtual workshops and will be offered to community groups and schools in this format during the autumn months. Normally these workshops take place in person and cover a range of issues such as composting, recycling, food waste prevention, waste prevention, etc. The first of these workshops is being trialled at present. A virtual tour of some of the recycling facilities will be showcased as part of a regional road show project. Filming of this will take place in the first half of September.

LAPN funding was recently granted by the EPA for two associated projects. The first of these is a joint project is led by Waterford City & County Council and is targeted at the prevention of paint waste. Other local authorities participating in the project are Carlow County Council and Kilkenny County Council. The over purchasing of paint has been an ongoing issue in Ireland and has particularly escalated during COVID 19. This joint project aims to make the community aware of how to calculate the appropriate quantities of paint required for any job, raise awareness about the best way to store paint and provides advice for the correct disposal method for any leftovers. In previous hazardous waste collection days at our Civic Amenity Sites, we have noticed a significant collection of non-hazardous paints. In order to prevent wasted paint, we propose to raise awareness of how to calculate paint required, store paint, dispose of paint, etc with a longer term aim of identifying how best to set up a paint reuse scheme for any paint that cannot be prevented. This project will include an investigation in to the amount of paint tins brought to Civic Amenity Sites in Carlow, Kilkenny and Waterford that are water based paints or dry/empty tins during 2020/2021. A social media campaign will help to educate householders about the proper disposal of paint, paint calculators (used to calculate the correct amount of paint required for a job) and paint storage. The second project receiving funding from the EPA is a feasibility study to assess the viability of establishing a paint reuse social enterprise in Co. Waterford.

Litter

A regional anti- litter campaign is currently in place to highlight the effects of litter on our roadsides and to ask road users to bring their litter home with them. This campaign which appeals to the public to the to call out litter louts is being broadcast on radio, social media and newspapers. It is hoped that this will help to reduce the amount of litter on our roadsides. This campaign has caught the public's attention and we have received some requests from communities for posters to be erected in their community.

Waterford City & County Council continues to offer assistance throughout the year to the general public to clean up litter and illegally dumped waste from their local environs e.g. approach roads, local beauty spots, beaches and general public areas. These clean ups continue throughout the winter months.

A dog fouling campaign has begun on social media to highlight the issue of dog litter, raise awareness about the litter fine and ask dog walkers to clean up after their dogs. A series of images and videos will be posted on social media over the coming weeks with the aim of becoming a talking point among the community and resulting in less dog fouling litter.



Schools

A newsletter will be sent to all schools to encourage them to continue to participate in our school's environmental awareness programme and to inform them of the various programmes, competitions and projects available to them this year.

This year's Green Schools Seminars will be online, with a seminar for each theme to accommodate schools on the various themes e.g. litter, waste, energy, water, travel, biodiversity, etc. These will be held in October to allow schools to settle in to the school year.

Climate Action Workshops

Climate action workshops which are funded through the Local Environmental Action Fund Local Agenda 21 will take place in September and October via online training courses with smaller groups of people. These workshops are being advertised and interested individuals and groups can register online at <https://shrtm.nu/etpA> The "Let's Talk Climate" webinar offers Waterford communities:

- An introduction to climate science its impacts and solutions
- An introduction to climate action at a national and local level.
- A introduction to community dynamics and how to generate climate actions at a local level
- An interactive online workshop to identify and prioritise potential actions for implementation at a local level.
- A follow up action report and slide book to all participants.



Waterford Energy Bureau

WCCC/ WEB have completed projects funded under the SEAI “Better Energy Sustainable Energy Authority Ireland (SEAI)” under the “Better Energy Communities Scheme 2019”, which included heat pump installation at libraries at Lady lane, Dungarvan and Lismore. The library buildings are now powered exclusively from renewable energy technology and are no longer dependant on fossil fuel for the provision of heating and hot water to the buildings. Other projects funded included Plaza Waterford lighting upgrades, lighting upgrades at Ardkeen Shopping Centre, Londis Store, Carbally Community Centre roof installation, Clashmore GAA Club, Piltown Community Centre upgrades and two dairy farm solar photo voltaic installation.

Funding has been received from SEAI to prepare a feasibility study to examine the viability of installing a biomass boiler that would provide heat and hot water to the Mount Congreve Estate and localized buildings etc. It is proposed that the report will be completed by late September / early October.

A new public lighting specification has been completed and details new Public lighting detail for the City and County including led lighting with dimming profiles in new housing estates. The new design guidelines will bring standardization in regards to lighting design for WCCC and is available on the WCCC WEB site.

Tender Documents are being prepared for the retro fitting of 16,000 public lights within Waterford. WCCC public lights are being included within a tender for counties within the southern region. Funding has been received for to complete the retro fitting from the Department of Communication, Climate Action and Environment under the Climate Action Fund. Retro fit works are due to begin in late 2020 following the completion of the tender process.

The WCCC “Climate Change Adaptation Plan” is being implemented. The plan details the how Waterford City and County Council will implement Climate Change Adaptation measures to reduce the impact of Climate Change.

WCCC have joined the “Covenant of Mayors Initiative”, which is the world’s largest movement for local climate and energy actions. Signatories have endorsed a share vision for 2050, accelerating the decarbonisation of their territories, strengthening their capacity to adapt to the unavoidable climate change impacts and allowing their citizens to access secure, sustainable and affordable energy. WCCC have pledged action to support implementation of the EU 40% greenhouse gas-reduction target by 2030 and the adoption of a joint approach to tackling mitigation and adaptation to climate change.

LED lighting upgrades and electrical services installation at Greyfriars Clock Museum currently in progress all works to be completed by September 2020.

To date under the SEAI private homes energy upgrades via the home energy grants and the free energy upgrades for fuel poor housing over 24% of the housing units in Waterford have received upgrades which equates to 12,707 homes. Of this sum 8,407 housing units received grant funding and 4,300 housing units received free energy upgrades. Currently there are a range of grants available for a range of energy efficiency measures which include heat pump installation, heating system control system, solar water heating, solar photo voltaic electric grant, attic, cavity / external wall insulation measures. Further details on energy grants for businesses and farms are available from the SEAI WEB site.

The “Department of Communication, Climate Action and Environment”, has launched a “Support Scheme for Renewable Heat” (SSRH). This scheme includes grant funding for air-source heat pumps for businesses and farmers and tariff payment for biomass boilers, biomass / anaerobic digestion CHP’s and anaerobic digestion boilers. The SSRH scheme is operated by SEAI and open to applications.

WEB / WCCC are looking for projects to be included within the 2020/2021 “SEAI Better Energy Communities Scheme”, funding of between 30% is available for businesses and 50% for community projects.

WCCC are preparing a strategy and funding application to SEAI for the installation of electrical vehicle charging points in Waterford. EV charging points will be located at strategic locations throughout Waterford. WCCC are awaiting guidelines on locating EV charging points from the Department of Transport.

WCCC are supporting communities in joining the “Sustainable Energy Communities” initiative, where funding is available through SEAI, for the development of “SEC Master Plans” and funding is available for energy efficiency upgrades and renewable energy installations. To date Clashmore / Kinsalebeg and Tramore SEC have developed master plans.

Website

Environmental Information continues to be added to the Environment section of the Waterford City & County Council website which can be found at www.waterfordcouncil.ie

Waterford City and County Council - Revenue Account Income & Expenditure Summary by Service Division Y.T.D. to May 31, 2020

	EXPENDITURE			INCOME		
	Expenditure €	Adopted Full Year Budget €	% Budget Spent to date	Income €	Adopted Full year Budget €	% Budget Raised
A Housing & Building	16,820,913	29,535,621	57%	17,288,575	31,511,289	55%
B Road Transport & Safety	19,722,006	42,241,585	47%	11,895,794	30,460,877	39%
C Water Services	5,920,553	10,966,994	54%	5,697,570	10,544,024	54%
D Development Management	12,879,316	16,954,281	76%	7,621,531	7,950,992	96%
E Environmental Services	10,358,884	19,224,337	54%	1,330,384	2,799,943	48%
F Recreation & Amenity	7,863,369	14,480,800	54%	933,260	1,819,371	51%
G Agriculture, Education, Health & Welfare	599,215	1,058,043	57%	287,623	489,290	59%
H Miscellaneous Services	5,563,341	9,521,645	58%	3,635,815	6,085,213	60%
LG Local Property Tax / GPG	0	0	0%	11,032,329	18,912,564	58%
RA Rates	0	0	0%	19,489,015	33,409,740	58%
	79,727,597	143,983,305	55%	79,211,896	143,983,305	55%
Surplus/Deficit				(515,701)	0	

Summary of main collections Jul 2020 YTD								
	[1]	[2]	[3]	[4]	[5]		[6]	[7]
	Gross Bal as at 1-1-2020	Accrued ytd to Jul 2020	Write Offs and Vacancies	Total for Collection	Collected ytd to Jul 2020	Gross Bal 31-05-2020	% Collected ytd re Total for Collection	% Collected ytd re 2020 Accrual
				[1+2-3]		[4-5]	[5/4]	[5/(4-1)]
	€	€	€	€	€	€	€	
Rates	9,198,695	33,617,198	- 50,037	42,765,856	15,111,363	27,654,493	35%	45%
Loans	2,020,256	2,007,039	- 929	4,026,366	1,976,386	2,049,980	49%	98%
Rents	4,108,720	8,534,065	-	12,642,785	8,348,818	4,293,967	66%	98%
Aged Analysis :								
			Less than 1 mth	2 to 6 mths	7 to 12 mths	greater than 12 mths		Net Balance
Rates			-	20,489,263	-	7,165,230		27,654,493
			0 to 3 mths	4 to 6 mths	7 to 12 mths	Greater than 12 mths		
Loans			220,794	122,663	269,859	1,436,663		2,049,980
			Less than 4 weeks	4-6 weeks	7-12 weeks	Greater than 12 wks		
Rents			405,309	329,314	531,969	3,027,375		4,293,967
Overdraft Levels								
Days in Overdraft in July	0		Cost -	€0.00	N/A	Average Value when in O/D :		€ -