

# Comhairle Cathrach & Contae Phort Láirge

## Waterford City & County Council



## Management Report to Council

Samhain 2020

Michael Walsh,

Príomhfheidhmeannach

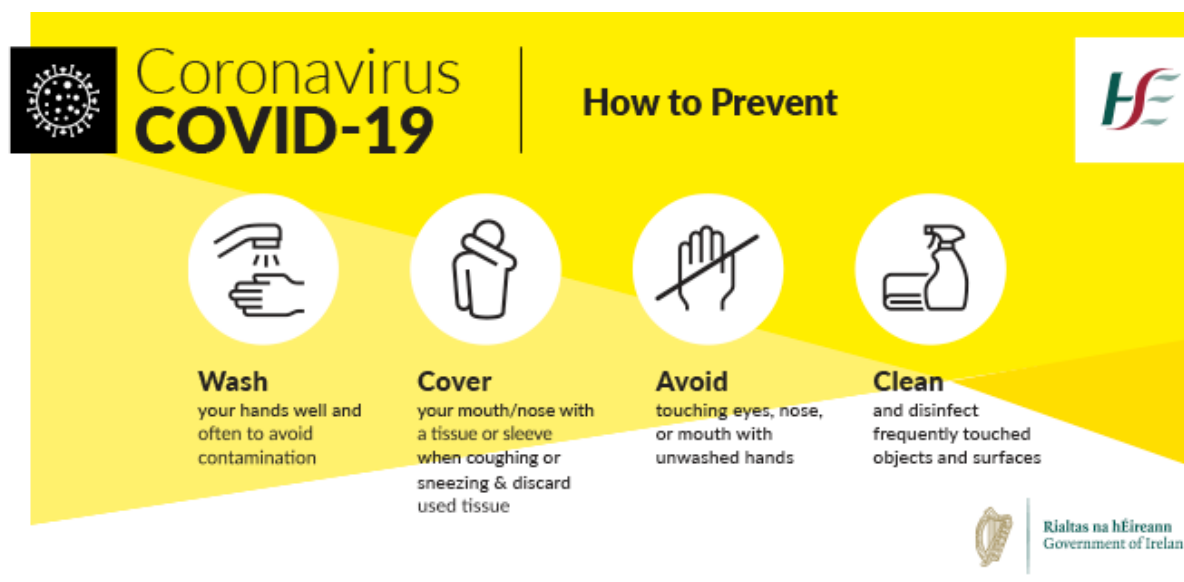
November 2020

Michael Walsh,

Chief Executive

## Seirbhísí Corparáirdeacha / Corporate

### How to protect yourself from COVID – 19



#### **IF YOU ARE NOT FEELING WELL**

Check if you have symptoms of coronavirus. These are a cough, shortness of breath, breathing difficulties, fever (high temperature).

If you do have symptoms of coronavirus, phone your GP or local Emergency Department [ED] without delay. **Do not go to your GP or ED.** Phone them first. Tell them about your symptoms. Give them the details about your situation. Avoid contact with other people by self-isolating. If you do not have a GP, phone **112** or **999**.

#### **IF YOU ARE FEELING WELL**

If you are feeling well, carry on with your normal routine.

Follow the advice on how to protect yourself and others from coronavirus and other infections such as flu. Avoid spending time with people who are ill with a cough, high temperature, or breathing problems.

If you develop symptoms of coronavirus:

- avoid contact with people by self-isolating
- phone your GP or emergency department
- tell them your symptoms and the details of your situation

#### **Register of Electors 2021/2022**

The Draft Register of rElectors for 2021/2022 is currently being compiled.

Please ensure that RFA1 forms are completed for each individual voter and returned to the Corporate Affairs before the 1<sup>st</sup> November 2020. These forms are available from [checktheregister.ie](http://checktheregister.ie) and in all Council Offices.

## Forbairt Eacnamaíoch / Economic Development

### North Quays

#### Current status on infrastructural works

- a. Detailed design for the Sustainable Transport Bridge, Transport Hub and SDZ Access Infrastructure Works are currently being finalised for issue by the end of 2020 and will form part of the Main Contract Works as outlined below.
- b. Detailed design drawings for tender documentation for relocation of the pump station are being finalised for issue.
- c. Rock stabilisation tender documents for the cliff face to the north of Plunkett Railway Station have been issued to WCCC for review and it is planned to go to tender in December 2020.
- d. The preparation of a planning application for flood defence works is currently being progressed.

#### Tender processes and ongoing works

##### a. Main contract

On 3<sup>rd</sup> June 2020 tenders were received for the Waterford North Quays Project Suitability Assessment Questionnaire (SAQ) for the Main Construction Works. Roughan O'Donovan (ROD), Consulting Engineers carried out a pass / fail assessment and an Independent Assessment Board carried out a qualitative assessed on the tenders received. BDO Ireland is undertaking a financial evaluation on the top five tenderers as recommended by the Assessment Board. The top five qualified submissions based on the recommendations of the Board and financial analysis will be invited to stage 2 of the Restricted Procedure Process.

#### Advanced contracts/ enabling works

MJS Civil Engineering is currently completing the Utility Diversion Works Contract works. MCB Civils Ltd is carrying out the demolition contract, most structures have been demolished and moving now to site clearance works phase. The contract is expected to finish in early 2021.

Consultant appointment to undertake the Transport Hub Independent Design Safety Certification by a Notified Body (NoBo) is expected within the coming weeks while Hewson Consulting Engineers has been appointed for the Sustainable Transport Bridge Cat 3 Independent Design Check contract. Both contracts are expected to commence in the coming weeks.

Works are progressing raising sleepers and track on the South East Greenway, between Waterford and New Ross. It is also planned to issue the South East Greenway Connectivity works Contract on tenders shortly.

### SDZ Development

On 10<sup>th</sup> July 2020 Falcon Real Estate Development Ireland Ltd was granted planning permission by Waterford City and County Council for almost 130,000 sq m of development within the Waterford North Quays Strategic Development Zone, comprising mixed use commercial building for tourism, retail, food & beverage and leisure, 15,000 sq m of office space, five residential buildings with 300 riverside apartments, 220-room 4-star hotel and conference centre, public open space, public realm and greenway connectivity.

## Local Enterprise Office

Indicator	At end of October 2019 Cumulative Figure	At end of October 2020 Cumulative Figure
No. of Clients Met	260	340
No. of clients applying for Measure 1 support	29	34
No. of clients securing Measure 1 support	16	32
Value of Measure 1 support approved	€640,565	€680,151
No. of clients receiving Measure 2 support	1485	2801
Value of Measure 2 support given	€434,874	€1,102,307

### Other Main Supports (from 16<sup>th</sup> March to 28<sup>th</sup> Sept)

Support	Applications Submitted	No. of Approvals	Value of Approvals €	No. of Vouchers Fully Paid	Value of Payments €
Business Continuity Voucher* Figures not included in cumulative table	682	592	€1,392,343	511	€1,169,038
Trading Online Voucher Figures included in cumulative table	389	336	€781,540		
MicroFinance Ireland Applications 4 pending approval	25	21	€503,420		

Support - Figures included in cumulative table	No. of Participants
COVID Mentoring	474
COVID Training	1003

## Rural Economic Development

### Town & Village Renewal Scheme: 2018. To be claimed in November 2020

Project	Status
Ardmore Cliff Walk Upgrade	Complete
Crough Wood Trail extension	Complete
Kilmeaden – Greenway connection	Nearing completion
Kilmacthomas	Complete
Kill	Complete
Estuary Coastal Path	Nearing completion
Lismore – Owenashad Boardwalk and Lady Louisa's Works	Complete
Embankment works at Ballyrafter	Outstanding owing to further erosion
Copper Coast Signage	Installation October 2020
Gaeltacht signage	Awaiting completion

### Town and Village Renewal Scheme: 2019

### Town and Village Renewal Scheme: 2019

Following applications are progressing as per DRCD requirements

Bunmahon	Site servicing at car park area, extension of loop trail and playground area enhancements
Dunhill	Village/Dolmen Trail access enhancements with pedestrian access from Anne Valley walk to village
Lemybrien	Playground development
Cappoquin	Façade/painting scheme
Fenor	Road resurfacing (bowling) and public realm upgrade

### Town and Village Renewal Scheme: 2020

Expression of Interest Process for TVRS 2020 completed with applications submitted for 9 applications in September 2020

Local Link	Rural transport Needs Assessment and Bus infrastructure project –
Comeragh Uplands	Opportunity Study
Portlaw	Footpath connectivity from village to Curraghmore Estate
Stradbally	Biodiversity Park development
Aglish	Public realm & Ancillary Works
Clashmore	Upgrade to Heritage Centre and Old School House and Ancillary Works
Dungarvan	Development of Dungarvan 2040 master plan
Touraneena	Sliabh gCua Community Centre upgrade
Knackanore	Heritage Trail and IT infrastructure for Community Hall

### Town & Village Renewal Scheme Accelerated Measure: 2020

18 applications submitted to assist towns and villages in recovery effort from Covid-19 under 3 calls in July & August. The following 16 projects are being progressed where allocations have been made.

Call 1	Project	Status
Local Flavours - Rural Waterford	Rural Waterford Tourism App/VEDP for Rural Waterford	Allocated €40,000
Dunmore East	Village web portal (commercial/tourism) and heritage signage	Allocated €25,000
Lismore	Village web portal (commercial/tourism) and painting scheme	Allocated €25,000
Kilmacthomas	Village web portal (commercial/tourism), farmers market infrastructure, public realm	Allocated €25,000
Tallow	Village web portal (commercial/tourism) and Enterprise centre works, public realm	Allocated €25,000
Call 2	Project	Status
Clashmore	Public realm to facilitate social distancing	Allocated €22,500
Kilmeaden	Bicycle Service area in village centre	Allocated €19,125
Bunmahon	Renewal of older persons play equipment	Allocated €25,000
Portlaw	Provision of Bus Shelter infrastructure and public realm	Allocated €40,000

**Town & Village Renewal Scheme Accelerated Measure: 2020**

	works at park	
Cappoquin	Pedestrian Crossing to facilitate social distancing	Allocated €24,750
Ardmore	Public Realm works to facilitate social distancing	Allocated €40,000

Call 3	Project	Status
Passage East	Provision of canopy and amenity seating in community area	Allocated €19,138
Touraneena	Community hall fit-out	Allocated €23,171
Dungarvan	Semi-permanent cover to outdoor seating areas in Square	Allocated €40,000
Gaeltacht	Village web portal (commercial/tourism) and Public Realm works	Allocated €15,464
Tramore	Repurposing Railway Square as an outdoor Market Space	Allocated €40,000

**Tourism**

A phone survey of approx. 70 tourism businesses in September 2020 provided an insight into how local businesses are managing. Information gathered was shared with the FI Tourism Recovery Taskforce. Most reported a short and busy season but some had particular challenges, especially those that rely heavily on international/older markets.

The recent increase in Covid-19 cases means businesses are now entering a new phase of uncertainty (particularly accommodation providers) where they are dealing with cancellations because of Dublin Level 3 lockdown.

**Visit Waterford Domestic Marketing Campaign Performance: June - September**

**Radio:**

- Over 1.3million people reached through Today FM (National), Red FM (Cork), 98 FM (Dublin). All three stations also ran Facebook competitions with very positive feedback.

**TV – Virgin Media:**

- 33% of viewing population saw the ad at least once
- 3,474,700 views of the ad by 1,206,000 -on average, each viewer saw the ad 2.9 times

**Digital Marketing – Google Ads:**

- 728,541 interactions with Ads - **41,875** were **clicks to the website**, **686,666** were views of longer than 30 seconds of **Youtube Ad**

**Digital Marketing – Social:**

- Social ads reached 497k unique users and drove 18,906 website visits.
- The cost per click (CPC) came in at €0.21 for the campaign (38% below the industry benchmark).
- The awareness video ads recorded 423k 3-second video views in total and reached 297k unique users.

## Waterford Trails

### Outdoor Rural Infrastructure Scheme (ORIS): 2018

Project	Status
Nire Valley Walks Project	Complete

### Outdoor Rural Infrastructure Scheme (ORIS) Measure 2:2019

Works to be completed by 31<sup>st</sup> August 2021

Name of Project	Description of Project	Location of Project	Funding approved by DRCD	Status
Saint Declan's Way	Continued development and completion of this long distance pilgrim trail to include interpretative signage, trail brochure, pedestrian counters and minor trail works.	Waterford section of SDW route from Melleray to Ardmore.	€43,440	In progress
Abbeyside Coastal Walk	Upgrade and development of a coastal spur off the Waterford Greenway	Abbeyside, Co. Waterford.	€66,577	In progress
Dungarvan campervan parking area and enhancement of Waterford Greenway play trail	<ul style="list-style-type: none"> <li>Parking facilities and infrastructure to cater for camper vans.</li> <li>Improvement and addition of a number of play areas to add to Waterford Greenway's existing play trail.</li> </ul>	<ul style="list-style-type: none"> <li>Rignasillogue, Dungarvan</li> <li>Waterford Greenway</li> </ul>	€101,600	In progress

### Outdoor Rural Infrastructure Scheme (ORIS) Measure 1:2019

Works to be completed by 30<sup>th</sup> November 2020.

Name of Project	Description of Project	Location of Project	Funding approved by DRCD	Status
Lady Louisa's to Roundhill Walk Upgrade Works	Trail upgrade works including surfacing, drainage, new section of path and other minor works.	Lady Louisa's and Roundhill Walk (section of St. Declan's Way), Lismore	€15,960	In progress
Walk Waterford: Trails brochure and Promotion	New walking brochure, videography and photography of Waterford Trails to be promoted as part of Visit Waterford.	Countryside - Co. Waterford	€16,000	In progress
Waterford EuroVelo 1 Route Development	Ongoing development of EuroVelo 1; Atlantic Coast Route, on road cycling route in Waterford.	Waterford EuroVelo 1 Atlantic Coast Route: Youghal Bridge to Passage East via Waterford Greenway	€14,000	In progress
Waterford Cycling Trails	Signage improvement. Upgrade and print of Waterford Cycling brochures.	Road Cycling Trails, Co. Waterford	€14,153	In progress

### Outdoor Rural Infrastructure Scheme (ORIS): 2020 Submitted 30<sup>th</sup> September 2020

Project	Proposed works
The Towers Walk, Ballysaggartmore	Maintenance works
Woodstown Viking Site, Waterford Greenway	Artistic feature
Boolas Loop, Rathgormack Walks	Maintenance works

Abbeyside Coastal Path  
Nire Valley Walks

Path extension works  
Maintenance and boardwalk

ORIS Measure 2 and 3 applications close 30<sup>th</sup> November 2020.

## Economic Development

### Mid term review of the Covid 19 Economic Recovery Plan (ERP)

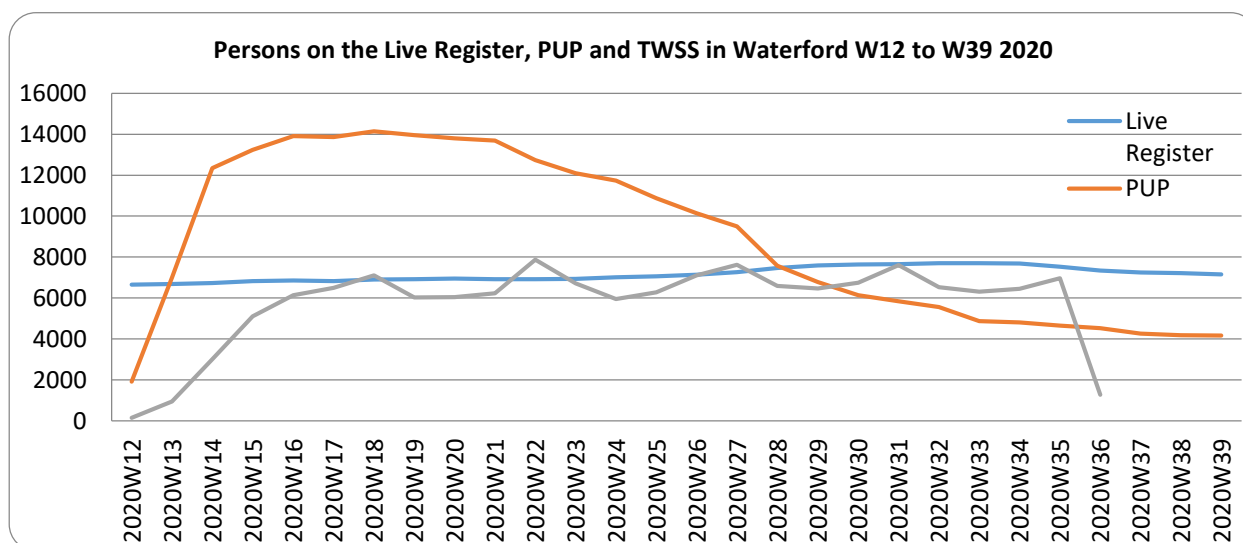
A review of the Economic Recovery Plan is currently ongoing and a number of stakeholder groups have already been engaged with to date including the city and town centre management groups and the Economic Development & Enterprise SPC. An updated version of the Economic Recovery Plan will be available in late October.

### Economic Development & Enterprise SPC

The Economic Development & Enterprise SPC met on October 28<sup>th</sup>. The main focus of the meeting was commencing the process of reviewing the Casual Trading Bye Laws. In addition members had an opportunity to input into the review of the Covid 19 Economic Recovery Plan and were briefed on the progress on a number of economic capital projects.

### Covid 19 Economic Recovery Plan – Report to Plenary Council – November 2020

## Key Economic Indicators



**Note:** Given that the TWSS scheme has now closed and the EWSS data is not yet available to the CSO for dissemination, the Labour Market and Earnings area of the CSO has decided to pause the publication of any further updates to the weekly income support tables at the link above until the EWSS data is available for us to assess and prepare for dissemination. CSO 15.10.20

### Restart Grants

See Plenary Report from Finance.

### Other Financial Supports



**Other Main Supports (from 16<sup>th</sup> March to 28<sup>th</sup> Sept)**

<b>Support</b>	<b>Applications Submitted</b>	<b>No. of Approvals</b>	<b>Value of Approvals €</b>	<b>No. of Vouchers Fully Paid</b>	<b>Value of Payments €</b>
<b>Business Continuity Voucher*</b> Figures not included in cumulative table	682	592	€1,392,343	511	€1,169,038
<b>Trading Online Voucher</b> Figures included in cumulative table	389	336	€781,540		
<b>MicroFinance Ireland Applications</b> 4 pending approval	25	21	€503,420		

<b>Support - Figures included in cumulative table</b>	<b>No. of Participants</b>
<b>COVID Mentoring</b>	474
<b>COVID Training</b>	1003

**Progress on actions**

**Waterford 2040**

The Community and Marketing section is responsible for the promotion and marketing of Waterford locally, nationally and internationally. The focus of the section since its establishment in February 2020 has been on the development of a Waterford 2040 brand which focused on the role of Waterford City as the economic driver and capital of South East region. The brand will be finalised in late 2020 with an intended launch in early 2021 to Council and Waterford stakeholders with a Dublin based launch to a wider audience.

**Keep Waterford Safe**

Waterford Council is working in partnership with WLR FM and a number of industry partners to raise public awareness of the measures required to help prevent the spread of COVID 19 and reduce the incidence rate. A range of measures include radio advertising, social media awareness raising, video competition and a Keep Waterford Safe face covering.

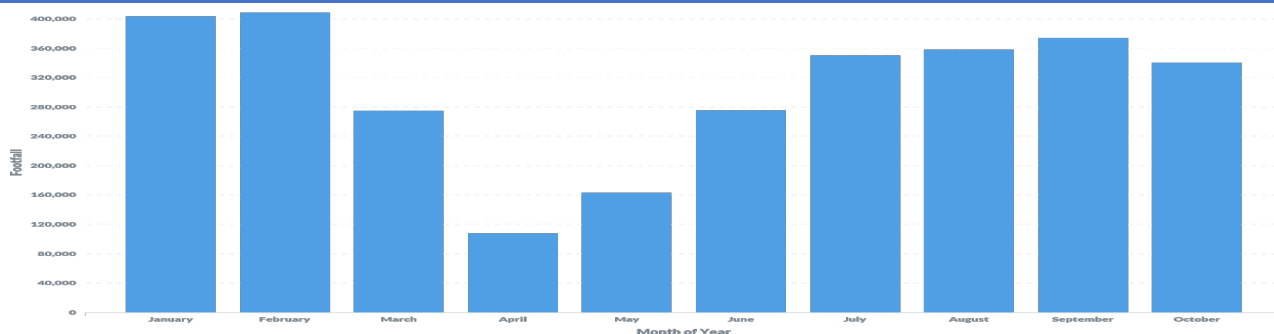
**Shop Waterford Support Local**

Waterford Council launched a Shop Waterford Support Local campaign in May 2020 with radio and newspaper adverts throughout. A social media campaign with Facebook and Twitter pages launched in mid October 2020. Plans are underway to support Waterford's City and Town Centres to retain local support and in particular campaigns will focus on combating Black Friday and Cyber Monday with a local Blue Monday campaign on November 30<sup>th</sup>

**Facebook analytics for Shop Waterford launched on 14<sup>th</sup> October 2020**

<b>Shop Waterford Facebook</b>	<b>@ 13<sup>th</sup> October</b>	<b>14.11.2020</b>	<b>22.10.2020</b>	<b>29.10.2020</b>
<b>Followers</b>	917	1,142	1,221	1,426
<b>Likes</b>	906	1,124	1,200	1,296
<b>Engagement Rate</b>		12%	10%	11%

**Footfall – Waterford City Centre**



**Footfall – Dungarvan town centre (system went live 28.08.20)**

Location analytics

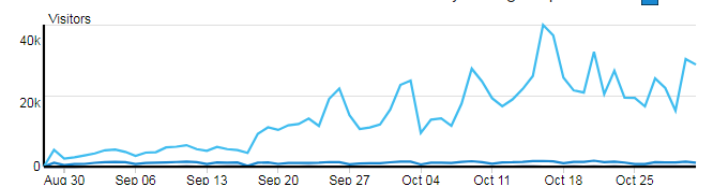
08/28/2020 to 10/31/2020

Dungarvan

Compare to...

Proximity CSV

Daily average capture rate 7.1%



Daily average

Passersby 16,280

Visitors 1,243

Connected 17

**Visit Waterford**

- Hotel occupancy nationally –September 38%, projected at October 22% and November 12%. (Prior to L5 being announced)
- Hotel occupancy locally estimated at 55% with accommodation with leisure centres or at seaside locations reporting up to 97% for September.

**Visit Waterford Social Statistics August-October 2020**

	August	September	October
Facebook	26,622	26,855	26,869
Instagram	3,360	3,485	3,538
Twitter	5,431	5,472	5,494

**New Actions:**

- Waterford LEO facilitated a meeting of local training agencies on the LCDC to develop a co-ordinated approach to the provision of Covid 19 related training. Additional training agencies to be invited to join: Skillsnet, WIT, Failte Ireland and Chambers.
- A survey of businesses in the urban centres was conducted to formulate a plan to ensure the continuing vibrancy of our urban centres and to help ensure the viability of businesses. 136 responses were received: Waterford City centre (66), Dungarvan (48) and Tramore (22).
- Visit Waterford are re-engaging with the sector to develop a plan for 2021 with a focus on domestic tourism and outdoor opportunities across Waterford.
- A Rural Strategy will be developed for Waterford with a focus on rural tourism and the agri food sector.
- LEO are conducting a study of the digital presence of businesses in Waterford with a view to developing a model of best practice for Waterford.
- A Public Realm Strategy is to be developed for Waterford to increase use of the public realm in urban areas including outdoor dining opportunities. The closing date for the Outdoor Seating Scheme was extended to November 15<sup>th</sup>.

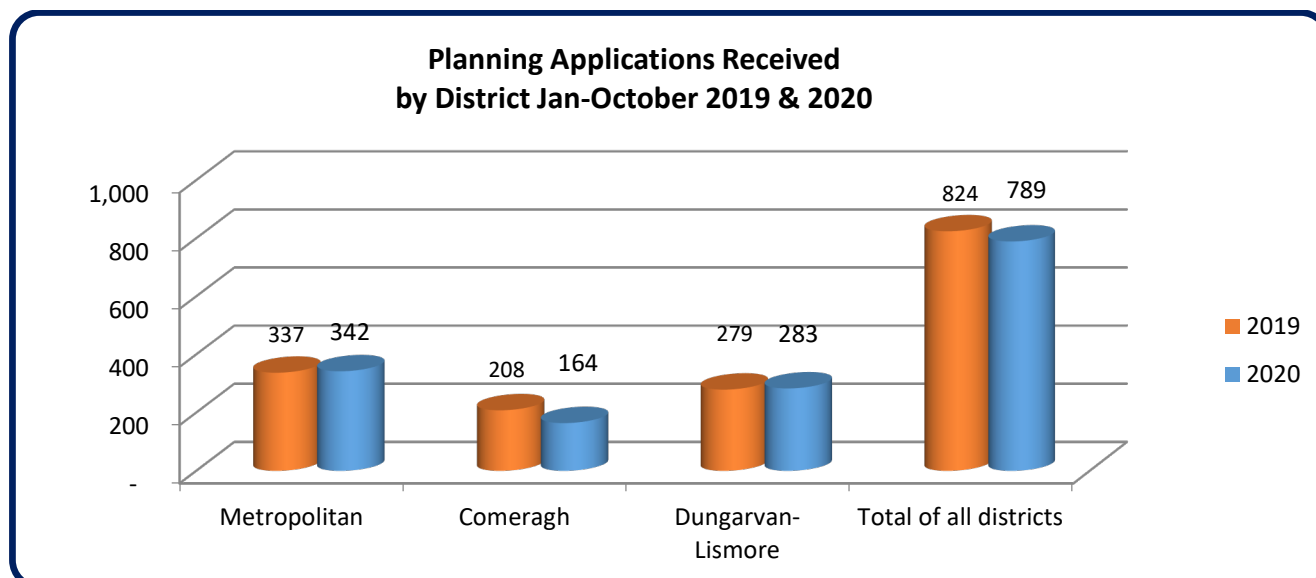
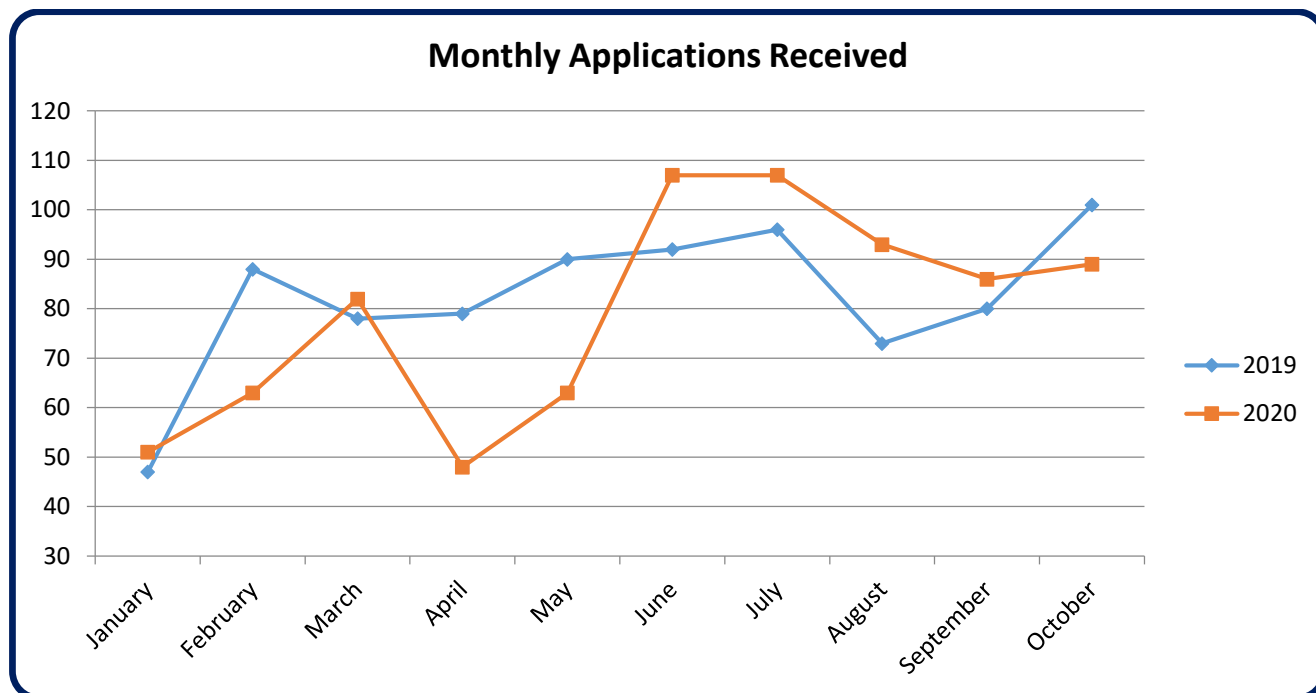
**Review of Covid 19 Economic Recovery Plan**

A review of the Economic Recovery Plan is currently ongoing and a number of stakeholder groups have already been engaged with to date including the city and town centre management groups and the Economic Development & Enterprise SPC. An updated version of the Economic Recovery Plan will be available in late October.

## Pleanáil / Planning

### Planning Applications Received – Countywide

89 Planning applications were received in the month of October countywide. This compares with 101 planning applications received in the same month in 2019. Additional responses are also being received to further information requests.



### Pre Planning Update- Countywide

Pre-planning meetings are being undertaken where requested by telephone.

### Development Management

All technical staff have been provided with laptops and are currently working from home with minimal visits to the office (usually outside normal office hours). All planning applications are scanned to iDocs so that Planners can review applications remotely without having to be provided with a hard copy. Reports are forwarded by email and contact between planning staff and their line managers is now generally taking place by telephone rather than face to face.

The initial pre-draft public consultation phase of the new unitary Waterford City and County Development Plan ran from 20<sup>th</sup> July to 14<sup>th</sup> September. Despite current Covid-19 restrictions a total of 283 submissions were received covering a range of topical issues relevant to both the broad operations of Waterford City & County Council and the new draft development plan content.

Public engagement was assisted greatly by a dedicated online consultation portal set up for the purpose which provided access to presentations and details regarding the principle issues to be considered in the new development plan and its process. In addition public webinars were held on the 18<sup>th</sup>, 19<sup>th</sup> and 20<sup>th</sup> of August on the respective topics of Environment and Heritage, Local Placemaking, and Economy, Agriculture and Education. Approximately 170 people attended these events. The Office of the Planning Regulator has commended Waterford City & Council on the quality and innovative nature of its public consultation process to date.

A total of 285 written submissions were received during the consultation period and these have been compiled to form the basis of the report by the Chief Executive to the Plenary Council on which further dialogue with the Council will inform the draft development plan in due course. While dates have not yet been identified to engage with the Plenary Council in this regard, it is intended to hold workshops with the Plenary Council throughout Q4 of 2020 to discuss the content of the Report and how best to inform the draft development plan at a strategic level. The Chief Executive Report has now been issued to the Plenary Council and will be discussed further at the November Plenary meeting.

Following consideration of the report, the Plenary Council may issue a direction to the Chief Executive regarding the making of the draft development plan. It should be noted that any such direction must be strategic in nature, be consistent with the draft core strategy and shall take account of the statutory obligations of the Council as set out in the National Planning Framework and the Regional Spatial and Economic Strategy and relevant policies and objectives of the Government or any Minister. Any direction must be given before 18<sup>th</sup> January 2021. A broad timetable for the development plan preparation process is again provided below for ease of reference.

MANAGEMENT REPORT TO COUNCIL – 12TH NOVEMBER 2020

Activity	Duration	Start	Finish
Development Plan Preparation Period.	Max 104 wks	Mon 20/07/20	Fri 15/07/22
Pre Draft Plan Public Consultation. <b>Now completed.</b>	8 wks	Mon 20/07/20	Mon 14/09/20
Prepare CE Report on submissions and submit to Plenary Council. <b>Now completed.</b>	8 wks	Mon 14/09/20	Mon 09/11/20
Liaise and discuss CE Report with Plenary Council.	10 wks	Mon 09/11/20	Mon 18/01/21
Prepare a Draft Dev Plan.	12 wks	Mon 18/01/21	Mon 12/04/21
Submit Draft Dev Plan to Plenary Council and obtain Resolution.	8 wks	Mon 12/04/21	Mon 07/06/21
Notice of preparation of Draft Dev Plan.	2 wks	Mon 07/06/21	Mon 21/06/21
Public Consultation on Draft Dev Plan.	10 wks	Mon 21/06/21	Mon 30/08/21
Prepare CE Report on submissions received and submit to Plenary Council for consideration.	12 wks	Mon 30/08/21	Mon 22/11/21
Resolution of Plenary Council on CE Report and Draft Dev Plan.	12 wks	Mon 22/11/21	Mon 14/02/22
Notice of Material Alterations if necessary.	3 wks	Mon 14/02/22	Mon 07/03/22
Final Public Consultation on Material Alterations.	4 wks	Mon 07/03/22	Mon 04/04/22
Prepare C.E. Report on submissions.	8 wks	Mon 04/04/22	Mon 30/05/22
Plenary Council to consider CE Report and make Resolution.	6 wks	Mon 30/05/22	Mon 11/07/22
New Dev Plan comes into force.	6 wks	Mon 11/07/22	Mon 22/08/22

### Planning SPC

A meeting of the SPC took place on 29<sup>th</sup> October which discussed the issues arising from the pre-draft development plan public consultation process, survey data relating to the initial considerations for the Core Strategy which will underpin the draft development plan and how best to engage with both the SPC and the Plenary Council during this phase of the draft development plan preparation process. It is intended to hold the next SPC meeting during the last week in November to further discussions on the emerging strategic issues for the draft development plan.

### Built Heritage

A total of 18 projects funded under the Built Heritage Investment Scheme (BHIS) and the Historic Structures Fund (HSF) are due for completion in October. Other projects relating to Protected Structures that Waterford City and County Council is working on and which are due for completion include:

- Greyfriars – The Irish Museum of the Science and Story of Time, the interior has been reordered and the stone work to the exterior has been repointed and cleaned.

- The Deanery - New Silver Museum.
- Following on from the works carried out on the Kilmacthomas station and the platform this year, works are nearing completion on the signal box and it will be accessible to the public in the near future.

In recent months there has been a significant increase in people interesting in upgrading older houses and properties, irrespective of inclusion on the Record of Protected Structures. Where queries are made in this regard directly to Elected Members it is recommended that information and guidance available through the link below to the Department of Arts, Heritage and the Gaeltacht advice series be circulated. This series of publications deals with issues such as roof repair, maintenance of older buildings, energy conservation and old house/new home.

<https://www.chg.gov.ie/heritage/heritage-publications/?month=0&years=0&topics=44&paged=1>

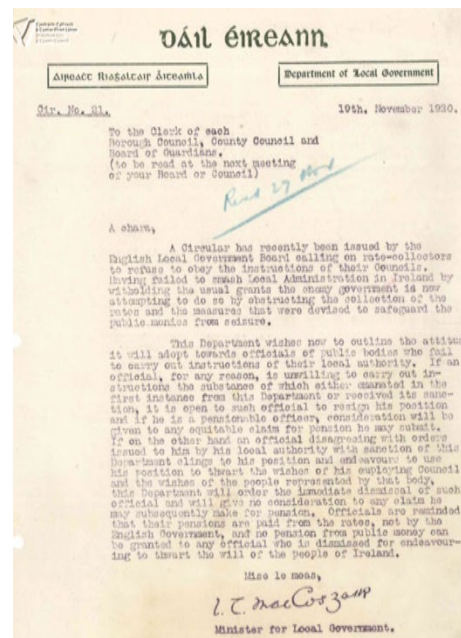
### Woodstown Viking Site

A Conservation Management Plan for the Woodstown Viking Site has been completed and will be published in November. An application for heritage interpretation artwork has been submitted to the Community Monuments Fund under the Department of Culture, Heritage and the Gaeltacht.



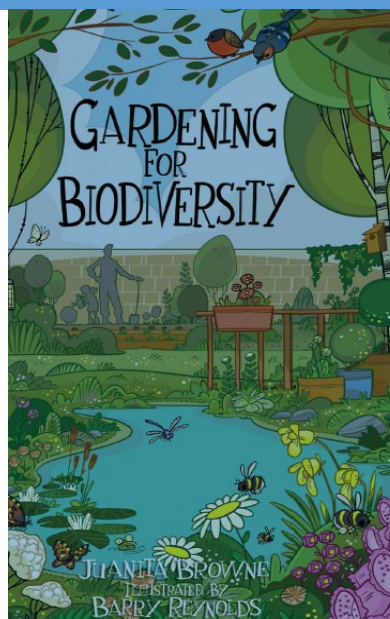
### Decade of Commemorations

A series of online talks on *Waterford and the 1920 Local Elections- Fighting for a Voice and a New Ireland* was recorded on September 25<sup>th</sup> and will be released on WCCC's Youtube Channel in October. The series includes presentations by Dr. Pat McCarthy, Emmett O'Connor, Joanne Rothwell, Christina Knight-O'Connor, Andrias O'Cathasaigh, Heather Laird and Mayor Damien Geoghegan. This event is part of the 2020 Waterford Commemorations Programme.



## Biodiversity

Funding has been allocated by the Biodiversity Policy Section of the Department of Culture, Heritage and the Gaeltacht under the July Stimulus Package for a wildlife sign at Ballyvoony Cove, invasive species awareness videos and a Brent Geese monitoring project in Dungarvan Harbour.



## Dungarvan Historic Towns Atlas

A digital version of the Historic Towns Atlas for Dungarvan was launched by the Royal Irish Academy during Heritage Week and the hard copy publication will be released in early November available online from [www.ria.ie](http://www.ria.ie) and local bookshops at €30.

<https://scanner.topsec.com/?u=https%3A%2F%2Fwww.wlrfm.com%2Fdeise-today%2F&d=1500&t=9c159eb9924663292ddc40cca3c97aa72268102a>



## [Bóithre agus Iompar](#) / Roads and Transportation

### Road Works Programme 2020

Our annual Road Works Programme is now complete for 2020. The Machinery Yard crews completed over 130 strengthening and surface dressing jobs to a very high standard by direct labour across the county. From October work on the LIS and CIS projects will commence. Low Cost Safety Schemes are continuing and are expected to be finished towards the end of October. Bridge Maintenance work is also underway and will continue into mid-November.

### July Jobs Stimulus Measures

The Job Stimulus Projects were reviewed by each District Council at their September meetings and approved. Work has commenced in each of the Districts and will be delivered by a combination of contract and direct labour to deliver this very ambitious projects plan. Progress on projects will be reported to each of the monthly District meetings.

### Winter Service Plan 2020/21

The Winter Service Plan is currently being reviewed. The plan deals with ice and snow conditions and is a sub plan or the Major Emergency Plan. The Council's objective is to provide an effective and efficient response



within the resources available and to minimise the negative impact of severe frost or heavy snow on the travelling public on the road network. Pre winter preparation is ongoing to ensure all plant is fully serviced and available and salt spreaders are calibrated, ensure adequate supplies of salt and grit are available and ensure arrangements are in place for responding to road based emergencies resulting from severe frost or snow. This Plan runs from 12th October, 2020 to the 30th April, 2021.

## Tithíocht / Housing

### Housing Applications

Housing applications	October 2019	Total Number of Applications Year 2019	October 2020	Total Number of Applications Year To Date 2020
Applications received	113	866	78	942
Applications assessed (incl files carried forward from previous month(s))	115	1129	103	1107
Applications validated (incl files carried forward from previous month(s))	54	606	72	670
Approved for social housing supports following interview with applicant	62	621	72	606

### Housing Allocations

District	Tenancies during October 2019	Cumulative No. of Tenancies 2019	New Tenancies during October 2020	Refusal No. of New Tenancy offer	Cumulative No. of New Tenancies 2020
Comeragh Municipal	0	18	1	0	3
Dungarvan/Lismore Municipal	8	69	8	3	36
Metropolitan	25	225	21	0	133
Voluntary Bodies	1	11	1	0	26
Totals	34	323	31	0	198

### Choice Based Letting (CBL) Scheme

The total number of properties advertised on the CBL system to date is 672. There have been 157 refusals on properties to date.

**Housing Loans applications**

2020 Housing Loans	Applications received	Applications awaiting further info	Applications refused	Applications approved	Applications with Housing Agency/deferred for 6 months
October	10	1	3	5	11
YTD	41	1	19	18	11

**Tenant Purchase applications**

2020 Tenant Purchase	Applications received	Applications awaiting further info	Applications refused	Applications approved	Sales Closed
October	10	3	2	6	2
YTD 2020	51	3	18	30	11
YTD 2019	59	17	12	30	21

2 Tenant Purchase sales closed in October -  
1 in Dungarvan and 1 in Tramore

**Housing Assistance Payment**

Housing Assistance Payment	October 2019 HAP tenancies	October 2020 HAP tenancies set up	2020 no. of Active HAP Tenancies set up	Cumulative no. of HAP Tenancies Set up to date	Cumulative no. of Active HAP Tenancies to date
HAP Tenancies	557	513	138	3,689	2,090

**Inspections of Dwellings**

	2020	Oct-20
<b>HAP</b>		<b>26</b>
Compliant		0
Non-Compliant		26
<i>of which were Re Inspections</i>		5
<b>New Build</b>		<b>15</b>
Compliant		15
Non-Compliant		0
<i>of which were Re Inspections</i>		6
<b>RAS</b>		<b>10</b>
Compliant		2
Non-Compliant		8
<i>of which were Re Inspections</i>		2
<b>LTL</b>		<b>17</b>
Compliant		7
Non-Compliant		10
<i>of which were Re Inspections</i>		13
<b>Total</b>		<b>68</b>

In October, Waterford City & County Council carried out 274 planned and reactive inspections of our housing stock. As a result of these inspections 39 properties have had improvement works carried out to meet the standards for rented accommodation.

**Housing Adaptation for People with a Disability, Housing Aid for Older People and Mobility Aid Grants**

Grant Scheme Amount	Number of applications approved October 2020	Value of applications October 2020	Cumulative number of applications approved 2020	Cumulative value of 2020 applications
Housing Adaptation for People with a Disability. Max. €30,000	5	53300.96	40	420228.82
Mobility Aids Scheme Maximum €6,000	4	18505.5	42	234347.21
Housing Aid for Older People Maximum €8,000	6	42428.00	47	218584.23
<b>Total</b>	<b>15</b>	<b>114234.46</b>	<b>129</b>	<b>873160.29</b>

**Homeless Services**

<b>Waterford Integrated Homeless Services (WIHS)</b> (Opened 25 <sup>th</sup> February 2019)	<b>October 2020</b>	<b>October 2019</b>
Number of callers seeking services in WIHS up to 29/10/20 (3,379 callers in total in 2019)	459 (3,222 TTD)	430 (2,409 TTD)
Number of presentations to WCCC Homeless Services up to 29/10/2020 (1,219 presentation in total in 2019)	164 (1,105 TTD)	126 (854 TTD)
Number of Formal Homeless Assessments up to 29/10/20 (*Total to date)	97 (645 TTD)*	85 (767 TTD)
<b>Emergency Accommodation (EA)</b>	<b>October 2020</b>	<b>October 2019</b>
Number of Single Persons in EA	85	96
Number of Families in EA	15	14
Number of children in EA	44	32

<b>Exits from Emergency Accommodation (EA)</b> (Not Recorded in 2019)	<b>October Singles</b>	<b>October Families</b>
Number of exits from EA	27	2

MANAGEMENT REPORT TO COUNCIL – 12TH NOVEMBER 2020

Number of exits from EA to a new tenancy	9	2
--	---	---

<b>HAP Place Finder Service</b>	<b>Oct. 2020</b>	<b>Cumulative (06.11.18 to 29/10/20)</b>
Number of approval letters issued 19 <sup>th</sup> Sept to 22 <sup>nd</sup> Oct 2020 (257 approval letters issued to 31/12/2019)	41	518
Number of HAP Place Finder Tenancies HUB Complete (117 tenancies set up to 31/12/2019)	13	279
Number of HAP Place Finder Tenancies currently being processed (as at 22/10/2020)	29	N/A

<b>Housing First Programme</b>	<b>Tenancies</b>
Number of Housing First tenancies in place at 29 <sup>th</sup> Oct. 2020 (Target = 30 by June 2021)	23

Homeless preventions, supported exits and sustained tenancies continue to be the priorities for Homeless Services in 2020. This will be achieved by continuing our partnership and collaborative working with the HSE and the various Homeless Service Providers in Waterford and by utilising our various projects in WIHS including our Homeless Prevention & Support Service, Advice & Information Service, Tenancy Support & Sustainment Service and the Housing First Service.

**Capital Projects**

<b>Housing Capital Schemes - WCCC Projects</b>				
<b>Project Location</b>	<b>Units</b>	<b>Area</b>	<b>Current Position</b>	<b>Comment</b>
The Glen Waterford	17	Metropolitan	Appraisal/Design Stage	Stage 2 Approved. Revised proposal to be brought to Council workshop
Summerland Square Waterford	12	Metropolitan	Tender Design	Tender Q4 2020.
Ardmore Park / Priory Lawn	5	Metropolitan	Completed	Completed
Larchville	5	Metropolitan	Construction	Construction in Progress
Dungarvan Ballinroad	21	Dungarvan-Lismore	Completed	Completed
Tramore An Garran	50	Metropolitan	Tender Design	Tender Q4 2020
Doyle Street	4	Metropolitan	Construction	Construction in Progress
Slievekeale	58	Metropolitan	Construction	Construction in Progress
Mount William, Williamstown Rd	65	Metropolitan	Turnkey	Construction in Progress
Clarendon Court	24	Metropolitan	CPO	Negotiations with owners on-going – potential Repair and Lease Scheme
Knight's Grange	55	Metropolitan	Construction	Completed
Ballynaneashagh	22	Metropolitan	Tender Design	Part 8 approved
Ballygunner	49	Metropolitan	Tender Design	Tender Q4 2020
Kilmacthomas	16	Comeragh	Tender Design	Tender in progress
Mount Esker, Ballytruckle	14	Metropolitan	Tender Design	Part 8 approved.
Estuary Heights, Shandon, Dungarvan	20	Dungarvan/Lismore	Completed	Completed
Railway Gardens,	17	Dungarvan/	Construction	Construction in Progress

MANAGEMENT REPORT TO COUNCIL – 12TH NOVEMBER 2020

Lismore		Lismore		
Mount Suir, Carrickphierish	18	Metropolitan	Completed	Completed
Brideview Close, Tallow	2	Dungarvan/ Lismore	Completed	Completed
Barnes Lane, The Glen	2	Metropolitan	Completed	Completed
Part V	26	Countywide	Various Stages	Delivery On-going 2019 – 16 2020 – 10 (est)
Repair and Lease	151	Countywide	Various Stages	Delivery on-going 2019 – 41 2020 – 40 (est) 2021 – 50 (est)
Leasing	130	Countywide	Various Stages	Delivery on-going 2019 – 30 2020 – 50 (est) 2021 – 50 (est)
Buy and Renew – Barker Place	16	Metropolitan	Completed	Completed
Buy & Renew – Thomas Court	11	Metropolitan	Tender Preparation	Works Tender Q4 2020
Buy & Renew – Manor Court	4	Metropolitan	Completed	Completed
Buy & Renew – 42/43 Doyle Street	2	Metropolitan	On Site	Construction in progress
Buy & Renew – Countywide	8	Countywide	Tender Preparation	In progress
<b>Total Units in WCCC Projects 824</b>				

<b>Housing Capital Schemes - Approved Housing Body Projects</b>				
<b>Project Location</b>	<b>Units</b>	<b>Area</b>	<b>Current Position</b>	<b>Comment</b>
Tramore, Ballycarnane <i>Tramore Voluntary Housing</i>	18	Metropolitan	Design Stage	Awaiting progress from AHB.
Dunhill <i>Gleann Ealach</i>	8	Comeragh	Design Stage	Planning refused
Powersfield, Hennessy's Road <i>Focus Ireland</i>	3	Metropolitan	Design Stage	Awaiting progress from AHB
The Paddock's <i>Anvers/Acquired Brain Injury Ireland</i>	9	Metropolitan	Construction	Completed
Wadding Manor, Ferrybank <i>Respond!</i>	10	Metropolitan	Design Stage	Completion Q4, 2020.
Kilbarry, 6 Cross Roads <i>Respond!</i>	69	Metropolitan	Appraisal	Completed
Fairfield Park <i>Circle VHA</i>	40	Metropolitan	Construction	Completed
<b>Total Units in Approved Housing Body Projects 157</b>				

**Refurbishing of houses becoming vacant for re let:**

<b>October 2020</b>	<b>Metro</b>	<b>Comeragh</b>	<b>Dungarvan / Lismore</b>	<b>TOTAL</b>
Handed Over / Works Completed	4	2	1	7
Newly vacant	13	1	3	17

### **Compulsory Purchase Orders**

In compliance with the Council's Vacant Homes Action Plan, Waterford City & County Council have an ongoing programme to deal with property vacancy that currently involves sixteen (16) Compulsory Purchase Orders that target twenty (20) individual properties. So far, all sixteen (16) of these Compulsory Purchase Orders have been confirmed by An Bord Pleanála. These properties have all been identified as vacant, in private ownership and are located countywide. It is proposed to extend the initiative to reduce vacancy to all areas of the county.

### **Seirbhísí Pobail / Community Services**

#### **Rural Development Programme:**

- LCDC approved €98,000 in funding for one project at the October Meeting.
- For the November LCDC meeting, there will be another 4 applications. Total value of €120,000. Another 5 Projects will be presented at the December meeting which will ensure the punctual and full allocation of the available budget for the programme.
- Payments to projects already commenced is proceeding. €3.4m paid out to date. €600,000 due to be paid out over the coming months.
- Construction now commencing on the first of a number of Smart Working locations in four West Waterford villages Tallow, Lismore, Cappoquin and Villierstown to create the Blackwater Valley Economic Development Zone.

#### **Community Enhancement Programme – Community Centre & Community Buildings**

The scheme closed for applications of the 16<sup>th</sup> October. The Assessment Group assessed the 66 applications received on Friday 30<sup>th</sup> October and their recommendation will go before the LCDC meeting on the 12<sup>th</sup> November.

#### **Community Mental Health – Small Grant Scheme**

The closing date was 16<sup>th</sup> October, 36 applications were received. The Assessment Group assessed these applications on Friday 30<sup>th</sup> October. The Assessment Group shall put forward their recommendation at the LCDC meeting on the 12<sup>th</sup> November.

#### **COVID-19**

##### **➤ Emergency Fund**

Waterford Council received €73,177 from the Department of Rural & Community Development under this fund. Community groups who are involved with Waterford Covid 19 Community Call are eligible to apply for this fund. To date 36 groups have received funding, with 9 of those groups receiving an additional allocation.

- ##### **➤ Covid 19 Community Response Forum has recommenced weekly meetings**

#### **Comhairle na nÓg:**



The young people continue to meet regularly using Zoom. They have their project finalised in the area of Climate Change. A large part of their work will be dedicated towards developing an App for use by young people with the aim of pushing reminders for good Environmental practises and limiting environmental impacts of their daily lives.

**Waterford Age Friendly Programme:**

Most thematic sub-groups have now restarted following Covid 19 with initiatives/projects identified progressing again.

**Healthy Waterford:**

Funding received is supporting initiatives including active community initiatives, disability actions, social farming and mental health.

**PPN**

714 groups registered with the PPN: 574 Community pillar; 115 Social Inclusion pillar; 25 Environment pillar.

**JPC:**

The October meeting was cancelled due to Covid 19 restrictions. The next JPC meeting will be held on Monday 7<sup>th</sup> December at 5pm.

**Social Inclusion:**

**SICAP**

Covid 19 has had an impact on the operations of the Programme Implementer, Waterford Area Partnership. WAP have engaged with the Community Response Forum, Waterford Food Bank, the Roma and Traveller Communities and other minorities to support Covid 19 responses. Support has been given to 26 groups to assist with completing Risk Assessments re Covid 19 and WAP are continuing to work with Waterford Volunteer Centre.

Progress on engaging with and animating community and voluntary groups remains strong and on target for full year target achievement, but working with individuals has proven to be more challenging, as could be expected.

**TIG**

The Waterford Traveller Interagency Group continues to meet regularly by way of Zoom and the next meeting is on 5<sup>th</sup> November 2020.

**[Seirbhísi Éigeandála / Emergency Services](#)**

**Fire Service Operational Activity:**

Total call outs to incidents attended by the 10 fire stations of the Fire Authority are shown for the year to date and for the month of October. Emergency response has continued uninterrupted throughout the Covid 19 crisis with significant precautionary measures put in place to ensure the safety of fire crews and the community served.

MANAGEMENT REPORT TO COUNCIL – 12TH NOVEMBER 2020

Area	Fires	Special Service	False Alarm Good Intent	False Alarm Malicious
Metropolitan	72	20	12	0
Comeragh	5	2	4	0
Dungarvan/Lismore	14	14	3	1
<b>Total for October</b>	<b>91</b>	<b>36</b>	<b>19</b>	<b>1</b>
<b>Year to date</b>	<b>625</b>	<b>375</b>	<b>151</b>	<b>14</b>
<i>Total for October 2019</i>	<b>66</b>	<b>44</b>	<b>18</b>	<b>2</b>
<i>Total for 2019</i>	<b>734</b>	<b>428</b>	<b>181</b>	<b>11</b>

**Fire Safety:**

The following applications for fire safety certificates have been received with comparison shown for the same period last year

Applications Received	October 2020	2020 Year to date	<i>Total for October 2019</i>	<i>Total for 2019</i>
Fire Safety Certificates	4	64	4	113

**Building Control:**

New functions associated with the Building Control Regulations, introduced on 1st March 2014, are being delivered within Emergency Services. Notices and applications associated with these regulations are shown below.

Application/Notification	October 2020	Cumulative Total for 2020	<i>Total for October 2019</i>	<i>Total for 2019</i>
Commencement Notices	32	247	28	339
Completion Certificates	25	198	21	236
Disability Access Certificates	5	36	7	83

**Civil Defence:**

Civil Defence activities during the month of October 2020 consisted solely of Covid-19 Response duties.

Essential Tasks undertaken were:

- PPE training.
- Vehicle preparation.
- Vehicle Cleaning and Decontamination.
- Mission Planning and Communications.
- Patient Transportation.

Patient Transportation was provided by Civil Defence volunteers to members of the community with no other available means of transport. This was only made possible by the cooperation and dedication of Civil Defence.

Transportation tasks included to and from:

- Nursing Homes.
- Clinical appointments (e.g. doctors, dental, radiotherapy, etc).
- Hospital Appointments in South Tipperary General Hospital Clonmel, Cork CUH, Waterford UHW and Whitfield.

At all times stringent measures were put in place to ensure the safety of Civil Defence volunteers and those members of the community served.

Planning is currently underway to investigate the feasibility of a return to training.

## Ealaíona & Cultúr / Arts & Culture

### Libraries

In October, 7 branches were open to the public; providing browsing services until the introduction of Level 3 restrictions on 7<sup>th</sup> October; libraries then moved to a Contact & Collect service. This service operated until Level 5 restrictions were introduced on 21<sup>st</sup> October and branches subsequently closed to the public. These branches continue to support the community with book return facilities, phone and online services. During the month, 4886 people visited Browse and Click & Collect libraries services throughout the county and borrowed 18656 items. Active membership of the Library Service for October was 16068 and during the month 24 service wide activities and events took place including;

- National Innovation Week Videos
- Dungarvan Chamber of Commerce Wellness Toolkit Video
- Positive Ageing Week and Age Friendly Library events and activities
- Well Festival of Arts and Wellbeing events and activities
- Imagine and Waterford Writers' Festival events and activities

- Children's Book Festival events and activities

### **Upcoming Online Events in November:**

- 'Keep Well' and 'Rewarding Reads' Campaign events and activities
- Digital Connectivity and Access to Learning initiative events and activities
- EDIC Creating a Social Economy Ecosystem in Waterford
- Digital Up-skilling event online training
- Science Week
- College Awareness Week

### **Library Development:**

- Reopening of Portlaw Library
- Ongoing Covid-19 compliance monitoring and change management in branches in line with Government restrictions
- Enablement of WCCC Guidelines for Working from Home to ensure business continuity
- Building maintenance including new boiler installation in Cappoquin, outdoor lighting

and door keypad for Open Library preparation in Lismore, lighting in Central Library and external returns unit repair work in Carrickphierish Library

- Staff training for 3D Printer and Tovertafel Table library technology, eServices provision for RB Digital training, fighting words event organisation training, presentation skills, Aware training, Zoom screen recording and Social Innovation for Rural Areas training
- Marketing activities such as paper and radio promotion of Contact & Collect and online library events
- Small Scale Capital Works Programme funding works planning underway in Central, Dungarvan and Cappoquin Libraries
- Healthy Ireland funding received from DRCD for an Occupancy Control System and video equipment for online events
- Dormant Accounts funding received from the DRCD for: West Waterford Story Collection Phase II; Touch, Type, Read and Spell online literacy course; After School Activity Club; Shakti Social Enterprise Programme for migrant women

### **Arts**

- All galleries and venues are closed under current restrictions. Dr. Eimear O’ Connor, is doing essential condition checking and cataloguing of the Waterford Art Collection.

- The Arts Practice Grants deadline has passed with adjudication taking place later this month in advance of a workshop with Councillors.
- The closing date for Arts Festival grants is November 6th.
- The Imagine Arts Festival, Waterford Writers Weekend and John Dwyer Traditional Music Festival went online. The Arts Office, national Waterford Poetry Prize winners were announced. All online events can still be viewed on [imagineartsfestival.com](http://imagineartsfestival.com). Online analytics for the festivals are positive for audience engagement and the local and national media gave coverage to events.
- The Waterford Film Festival is due to go online this month.
- The Arts Office, literature programme continues with mentoring and workshops via zoom.
- The Arts in Health music programme is being delivered virtually to healthcare settings.
- The contract for the formatting and editing of the first volume of new plays of Ireland’s South East (POISE) has been awarded to playwright Gary Mitchell.

## **Seirbhísí Comhshaoil / Environmental Services**

### Enforcement under the Litter Pollution Acts 1997 (as amended)

1<sup>st</sup> January 2020 – 30<sup>th</sup> October 2020.

Legal Action Initiated	9
On the Spot Litter Fines Issued (Pending Payment or Prosecution)	187
On the Spot Litter Fines Paid (Includes Fines previous years)	81
No of Notices Issued Under Sections 9,16,17,20	0

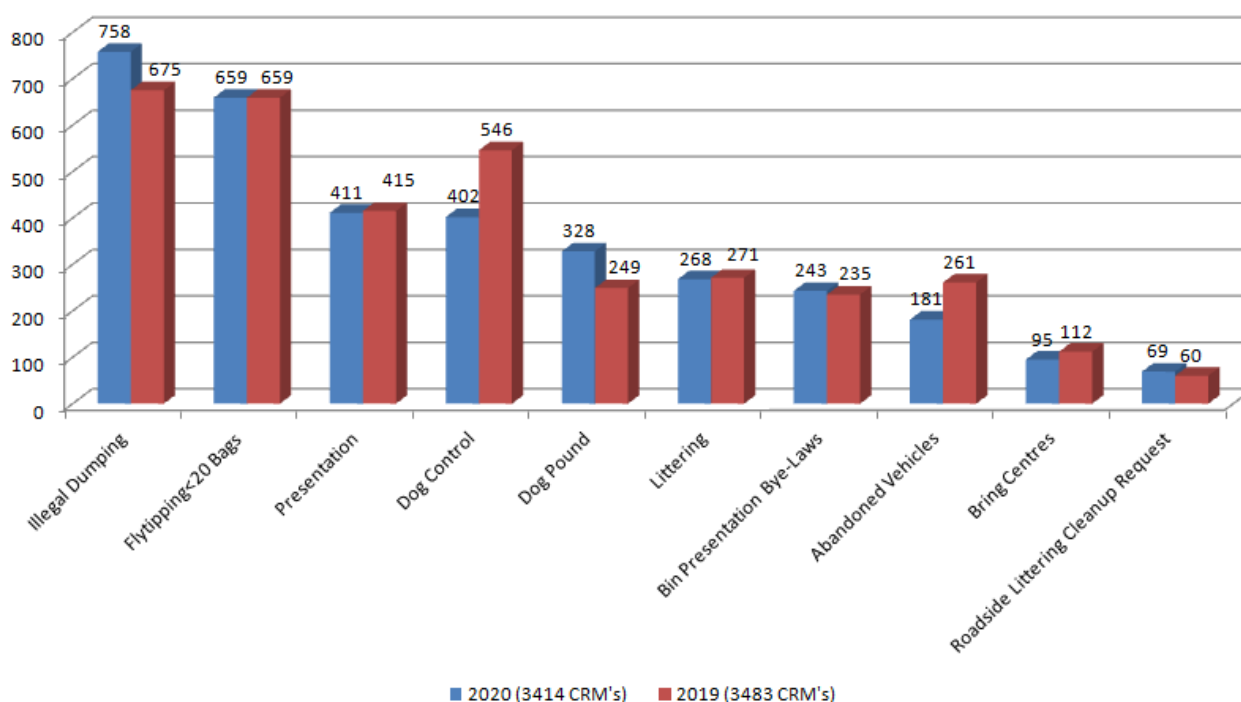
### Enforcement under the Waste Management Acts 1996 (as amended)

1<sup>st</sup> January 2020 – 30<sup>th</sup> October 2020.

No of Complaints	2582
Legal Actions	4

Section 18's Statutory Notices Served (asking for info on Waste Issues)	1
Section 55's Statutory Notices Served (asking for Waste to be removed in a 2 week period)	24
Section 71's (Abandoned Vehicle Notices)	88
Warning Letters Sent (Packaging Info & Notice Follow Up)	111
Section 14 Directions	6
Section 107 EPA (Noise)	0
Fixed Penalty Notices on Waste Collectors	0
Regulation 33 - Requirement on a Registered Owner to deposit an End-of-Life Vehicle at an Authorised Treatment Facility. (European Union End-of-Life Vehicles) Regulations 2014 – Fixed Penalty Notice.	1
Regulation 25 of the European Union (Packaging) Regulations 2014 (S.I. No. 282 of 2014) as amended	0
Questionnaires issued under the Household Bin Presentation Byelaws (2018)	990

The following graph compares the top ten categories of CRM cases assigned to the Environment Department in the period January to October in the years 2019 & 2020. Environmental enforcement officers continue to investigate complaints received and monitor illegal waste issues, littering, dog fouling, fly-tipping, and illegal signage and issued litter fines where offences are detected. The Waterford City & County Councils Dog Wardens continue to investigate all dog control issue throughout the City & County.



### Draft Litter Management Plan 2021-2024

The Draft Litter Management Plan 2021-2024 has been approved by the Environment SPC to proceed to public consultation. Members will be advised when the period for public display & consultation on the draft plan commences. Following receipt of any submissions the plan will be brought to the Council for approval.

### Environmental Education & Awareness

#### **Waste prevention**

October was National Reuse Month. A full calendar of events was scheduled around the country, from online tutorials and workshops to videos and podcasts. All events were listed on [www.mywaste.ie](http://www.mywaste.ie). Two of the events

which took place in Waterford were a schools competition and a sustainable textiles webinar. The webinar was well attended, with all 45 spaces filling up within 3 days. A follow up textile upcycling workshop will take place on 27<sup>th</sup> November.

Waterford will host a virtual waste roadshow on the 23-29<sup>th</sup> November, including a website & social media account take-over, virtual workshops will be delivered each day – the topics are: Recycling, Household Hazardous Waste, Reuse of Textiles, Food Waste and a video of some of our recycling facilities. Traditional media articles including radio & print press, accurate and most of all up to date.

LAPN funding was recently granted by the EPA for two associated projects. The first of these is a joint project with Carlow County Council and Kilkenny County Council (with Waterford City & County Council as the lead authority in this project) to prevent paint waste by raising awareness about top tips to purchase, store and dispose of paint to create least waste. These will be shared online through social media posts and videos, on radio and at point of sale in hardware and paint shops. The over purchasing of paint has been an ongoing issue in Ireland and has particularly escalated during COVID 19. In previous hazardous waste collection days at our Civic Amenity Sites, we have noticed a significant collection of non hazardous paints. In order to prevent wasted paint, we propose to raise awareness of how to calculate paint required, store paint, dispose of paint, etc with a longer term aim of identifying how best to set up a paint reuse scheme for any paint that cannot be prevented. It is hoped to launch this project on 26<sup>th</sup> November, to link it in with the virtual waste roadshow taking place between 23<sup>rd</sup> – 29<sup>th</sup> November. The second project receiving funding from the EPA is a feasibility study to assess the viability of establishing a paint reuse social enterprise in Co. Waterford working through our Civic Amenity Sites.

#### **Litter**

Waterford City & County Council continues to offer assistance throughout the year to the general public and schools to clean up litter and illegally dumped waste from their local environs e.g. approach roads, local beauty spots, beaches and general public areas. These clean ups continue throughout the winter months.

#### **Schools**

This year's Green Schools Seminars were held online on between 5pm – 8pm on Monday 19<sup>th</sup> October, with a seminar for each theme to accommodate schools on the various themes i.e. litter & waste, energy, water, travel, biodiversity, etc. Anyone who couldn't attend the seminars on the night were offered an individual presentation afterwards to convey the information to them. Some schools are beginning to take the opportunity to receive workshops and talks online now, particularly waste prevention and recycling workshops.

#### **Waterford Energy Bureau**

- Waterford City & County Council are seeking to partner with community groups to include buildings within the 2021 "SEAI Better Energy Communities Scheme". Funding of between 30% is available for businesses and 50% for community projects. Community building upgrades can include insulation, heating system, renewable energy technologies etc.
- Funding has been received from SEAI to prepare a feasibility study to examine the viability of installing a biomass boiler that would provide heat and hot water to the Mount Congreve Estate and localized buildings etc. It is proposed that the report will be completed by late November.
- A tender has been advertised for the retro fitting of 15,000 public lights within Waterford and is part of a larger Southern region tender process. Funding has been received for to complete the retro fitting from the Department of Communication, Climate Action and Environment under the Climate Action Fund. Retro fit works to begin in Waterford in late 2021 following the completion of the tender process.
- The WCCC "Climate Change Adaptation Plan" is being implemented. The plan details the how Waterford City and County Council will implement Climate Change Adaptation measures to reduce the impact of Climate Change.
- WCCC have joined the "Covenant of Mayors Initiative", which is the world's largest movement for local climate and energy actions. Signatories have endorse a share vision for 2050, accelerating the decarbonisation of their territories, strengthening their capacity to adapt to the unavoidable climate

change impacts and allowing their citizens to access secure, sustainable and affordable energy. WCCC have pledged action to support implementation of the EU 40% greenhouse gas-reduction target by 2030 and the adoption of a joint approach to tackling mitigation and adaptation to climate change.

- The “Department of Communication, Climate Action and Environment”, has launched a “Support Scheme for Renewable Heat” (SSRH). This scheme includes grant funding for air-source heat pumps for businesses and farmers and tariff payment for biomass boilers, biomass / anaerobic digestion CHP’s and anaerobic digestion boilers. The SSRH scheme is operated by SEAI and open to applications.
- WCCC are preparing a strategy and funding application to SEAI for the installation of electrical vehicle charging points in Waterford. EV charging points will be located at strategic locations throughout Waterford. WCCC are awaiting guidelines on locating EV charging points from the Department of Transport.
- WCCC are supporting communities in joining the “Sustainable Energy Communities” initiative, where funding is available through SEAI, for the development of “SEC Master Plans” and funding is available for energy efficiency upgrades and renewable energy installations.

**Website**

Environmental Information continues to be added to the Environment section of the Waterford City & County Council website which can be found at [www.waterfordcouncil.ie](http://www.waterfordcouncil.ie)

## Airgeadas / Finance

### Waterford City and County Council - Revenue Account Income & Expenditure Summary by Service Division Y.T.D. to September 30, 2020

		<b>EXPENDITURE</b>			<b>INCOME</b>		
		Expenditure €	Adopted Full Year Budget €	% Budget Spent to date	Income €	Adopted Full year Budget €	% Budget Raised
A	Housing & Building	20,209,024	29,535,621	68%	21,616,166	31,511,289	69%
B	Road Transport & Safety	27,525,806	42,241,585	65%	17,702,219	30,460,877	58%
C	Water Services	7,928,649	10,966,994	72%	7,602,338	10,544,024	72%
D	Development Management	22,150,120	16,954,281	131%	15,586,368	7,950,992	196%
E	Environmental Services	14,393,221	19,224,337	75%	2,123,153	2,799,943	76%
F	Recreation & Amenity	10,658,384	14,480,800	74%	1,275,633	1,819,371	70%
G	Agriculture, Education, Health & Welfare	778,156	1,058,043	74%	402,047	489,290	82%
H	Miscellaneous Services	6,986,344	9,521,645	73%	4,572,943	6,085,213	75%
LG	Local Property Tax / GPG	0	0	0%	14,184,423	18,912,564	75%
RA	Rates	0	0	0%	25,057,305	33,409,740	75%
		<b>110,629,704</b>	<b>143,983,305</b>	<b>77%</b>	<b>110,122,595</b>	<b>143,983,305</b>	<b>76%</b>
Surplus/Deficit					(507,109)	0	



Summary of main collections Sept 2020 YTD

	[1]	[2]	[3]	[4]	[5]	[6]	[7]	
	Gross Bal as at 1-1-2020	Accrued ytd to Sept 2020	Write Offs and Vacancies	Total for Collection [1+2-3]	Collected ytd to Sept 2020	Gross Bal 30-09-2020 [4-5]	% Collected ytd re Total for Collection [5/4]	% Collected ytd re 2020 Accrual [5/(4-1)]
		€	€	€	€	€	€	
<b>Rates</b>	9,198,695	33,617,198	- 53,574	42,762,319	16,246,529	26,515,790	38%	48%
<b>Loans</b>	2,020,136	2,520,950	- 929	4,540,157	2,539,400	2,000,757	56%	101%
<b>Rents</b>	4,108,720	10,973,765	2,898	15,085,383	10,686,848	4,398,535	71%	97%
<b>Aged Analysis :</b>								
			<b>Less than 1 mth</b>	<b>2 to 6 mths</b>	<b>7 to 12 mths</b>	<b>greater than 12 mths</b>		<b>Net Balance</b>
<b>Rates</b>			-	20,489,263	-	6,026,527		26,515,790
			<b>0 to 3 mths</b>	<b>4 to 6 mths</b>	<b>7 to 12 mths</b>	<b>Greater than 12 mths</b>		
<b>Loans</b>			203,074	112,819	248,201	1,436,663		2,000,757
			<b>Less than 4 weeks</b>	<b>4-6 weeks</b>	<b>7-12 weeks</b>	<b>Greater than 12 wks</b>		
<b>Rents</b>			438,771	356,502	575,887	3,027,375		4,398,535
<b>Overdraft Levels</b>								
Days in Overdraft in Sept	0		Cost -	€0.00		Average Value when in O/D : N/A	€	-

