

Comhairle Cathrach & Contae Phort Láirge

Waterford City & County Council



Management Report to Council

Eanáir 2021

Michael Walsh,

Príomhfheidhmeannach

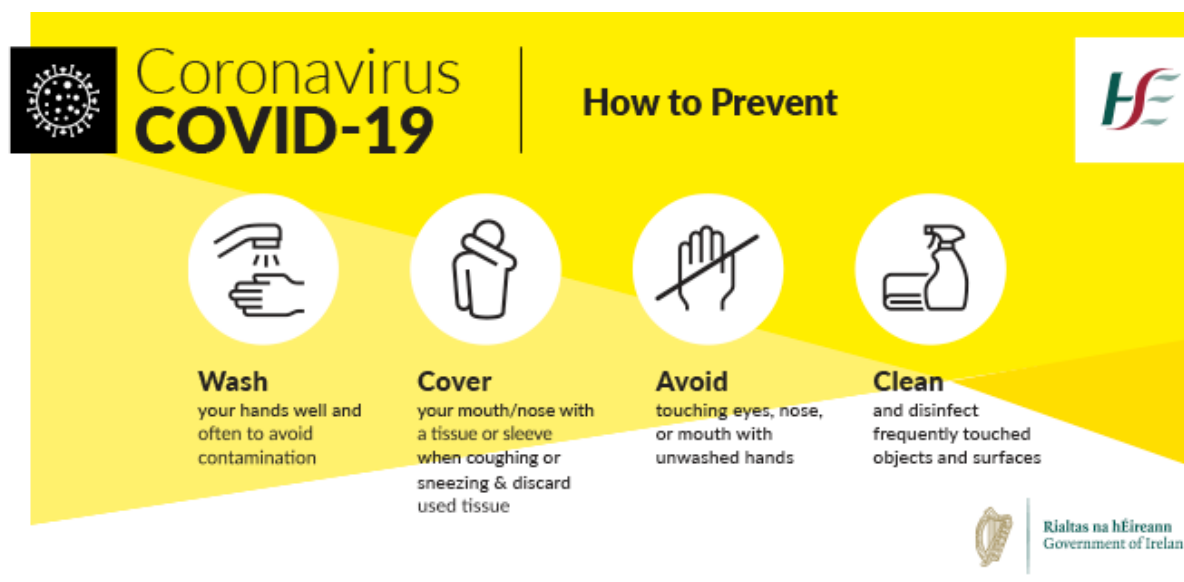
January 2021

Michael Walsh,

Chief Executive

Seirbhísí Corparáirdeacha / Corporate

How to protect yourself from COVID – 19



IF YOU ARE NOT FEELING WELL

Check if you have symptoms of coronavirus. These are a cough, shortness of breath, breathing difficulties, fever (high temperature).

If you do have symptoms of coronavirus, phone your GP or local Emergency Department [ED] immediately.

Do not go to your GP or ED. Phone them first. Tell them about your symptoms. Give them the details about your situation. Avoid contact with other people by self-isolating. If you do not have a GP, phone **112** or **999**.

IF YOU ARE FEELING WELL

If you are feeling well, carry on with your normal routine.

Follow the advice on how to protect yourself and others from coronavirus and other infections such as flu.

Avoid spending time with people who are ill with a cough, high temperature, or breathing problems.

If you develop symptoms of coronavirus:

- avoid contact with people by self-isolating
- phone your GP or emergency department
- tell them your symptoms and the details of your situation

Meetings

All council meetings, CPG and SPC's to continue as remote meetings for the month of January.

Forbairt Eacnamaíoch / Economic Development

1. North Quays

(i) **Funding**

In December 2020 a claims of €3.9m and €0.5m were submitted to the NTA and URDF respectively for funding for the North Quays development. Throughout 2020 funding of almost €9m has been claimed from the two funding bodies, this has allowed the project progress to tender stage and complete two enabling works contracts.

(ii) **Current status on infrastructural works**

- a. Detailed design for the Sustainable Transport Bridge, Transport Hub and SDZ Access Infrastructure Works are currently being finalised for issue in early 2021 and will form part of the Main Contract Works that is due to go to tender in April 2021.
- b. Detailed design drawings for tender documentation for relocation of the pump station are being finalised for issue in January 2021.
- c. It is planned to go to tender in February 2021 for rock stabilisation works to the cliff face to the north of Plunkett Railway Station and also South Plaza enabling works.
- d. The preparation of a planning application for flood defence works is currently being progressed, to be submitted to An Bord Pleanála in March/ April 2021.
- e. Part 8 planning applications are currently being prepared by Kilkenny County Council for the Belmont Link road, N29 Port Road and enhanced Greenway connectivity works. Detailed design for Abbey Road and Belmont Road Sustainable Transport Improvements will progress in early 2021.

(iii) **Tender processes and ongoing works**

- a. **Main contract.** On 3rd June 2020 tenders were received for the Waterford North Quays Project Suitability Assessment Questionnaire (SAQ) for the Main Construction Works. Roughan O'Donovan (ROD), Consulting Engineers carried out a pass / fail assessment and an Independent Assessment Board carried out a qualitative assessment on the tenders received. BDO Ireland is finalising a financial evaluation on the top five tenderers as recommended by the Assessment Board. The top five qualified submissions based on the recommendations of the Board and financial analysis will be invited to Stage 2 of the Restricted Procedure Process.
- b. **Advanced contracts/ enabling works.** The Utility Diversion Works Contract and Demolition and Site Clearance Works Contract are both substantially complete and due to be off site before Christmas.

Consultants are currently being appointed to undertake the Transport Hub Independent Design Safety Certification by a Notified Body (NoBo) while Hewson Consulting Engineers has been appointed for the Sustainable Transport Bridge Cat 3 Independent Design Check contract. Both contracts are expected to commence in the coming weeks.

Works are progressing raising sleepers and track on the South East Greenway, between Waterford and New Ross.

(iv) **SDZ Development**

On 10th July 2020 Falcon Real Estate Development Ireland Ltd was granted planning permission by Waterford City and County Council for almost 130,000 sq m of development within the Waterford North Quays Strategic Development Zone, comprising mixed use commercial building for tourism, retail, food & beverage and leisure, 15,000 sq m of office space, five residential buildings with 300 riverside apartments, 220-room 4-star hotel and conference centre, public open space, public realm and greenway connectivity.

Under Section 183 Local Government Act 2001, Waterford City and County Council meeting of 10th December 2020 agreed to dispose of lands at Michael Street and North Quays, Waterford to Falcon Real Estate Development Ireland Ltd.

2. Local Enterprise Office

| Indicator | At end of Dec 2019 Cumulative Figure | At end of Dec 2020 Cumulative Figure |
|---|---|---|
| No. of Clients Met | 310 | 320 |
| No. of clients applying for Measure 1 support | 36 | 37 |
| No. of clients securing Measure 1 support | 21 | 35 |
| Value of Measure 1 support approved | €703,315 | €835,970 |
| No. of clients receiving Measure 2 support | 2144 | 3361 |
| Value of Measure 2 support given | €567,861 | €1,498,632 |

Other Main Supports (from 16th March)

| Support – <i>Figures not included in cumulative table</i> | Applications Submitted | No. of Approvals | Value of Approvals € | No. of Vouchers Fully Paid | Value of Payments € |
|--|---------------------------|---------------------|-------------------------|----------------------------------|------------------------|
| Business Continuity Voucher | 682 | 592 | €1,392,343 | 541 | €1,268,544 |

Note: 89 'refused' due to eligibility/withdrawn under the voucher. 1 work in progress.

| Support – <i>Figures included in cumulative table</i> | Applications Submitted | No. of Approvals | Value of Approvals € |
|--|------------------------|------------------|-------------------------|
| Trading Online Voucher | 481 | 446 | €1,060,112 |

- 15 Rejected (Due to 10+ staff, CRO outside Waterford etc).
- 20 Applications pending.

| Support – <i>Figures included in cumulative table</i> | No. of Participants |
|---|---------------------|
| COVID Mentoring | 623 |
| COVID Training | 1706 |

| Support - <i>Figures not included in cumulative table</i> | Applications Submitted to MFI | No. of Approvals | Value of Approvals € |
|--|-------------------------------|------------------|----------------------|
| MicroFinance Ireland Applications | 25 | 21 | €503,420 |

| Support – <i>Figures not included in cumulative table</i> | Applications Submitted | No. of Approvals | Value of Approvals € |
|--|------------------------|------------------|----------------------|
| LEO Client Stimulus Scheme | 62 | 62 | €276,906 |

3. Rural Economic Development

- Town & Village Renewal Scheme 2018 - to be claimed in November 2020
- Town and Village Renewal Scheme 2019 – 5 applications are progressing as per DRCD requirements.
- Town and Village Renewal Scheme 2020 - Expression of Interest Process for TVRS 2020 completed with applications submitted for 9 applications in September 2020.
- Town & Village Renewal Scheme Accelerated Measure 2020 -16 projects are being progressed where allocations have been made.

4. Waterford Trails

ORIS 2019

All projects progressing well. Measure 1 projects due to be completed by year end. Measure 2 projects due to be completed during 2021.

ORIS 2020

Applications for funding under Measure 1 submitted end September. Applications under Measure 2 and 3 submitted on 30th November.

5. Communications & Marketing update

Waterford 2040

The Waterford 2040 website and investment prospectus are at final design stage and will be presented to an Executive Group in early January with a view to a Q1 2021 launch date. A detailed marketing plan to promote Waterford as an attractive location for inward investment and development will be finalised for 2021 -2022.

Keep Waterford Safe

Waterford Council concluded its work with WLR on the Covid compliance messaging which ran until 22nd December 2020. The campaign was successful in encouraging people to comply with COVID restrictions and was supported by a large number of medical, cultural and business personalities. The Keep Waterford Safe face coverings were supported by a large numbers of local businesses and helped to communicate the message.

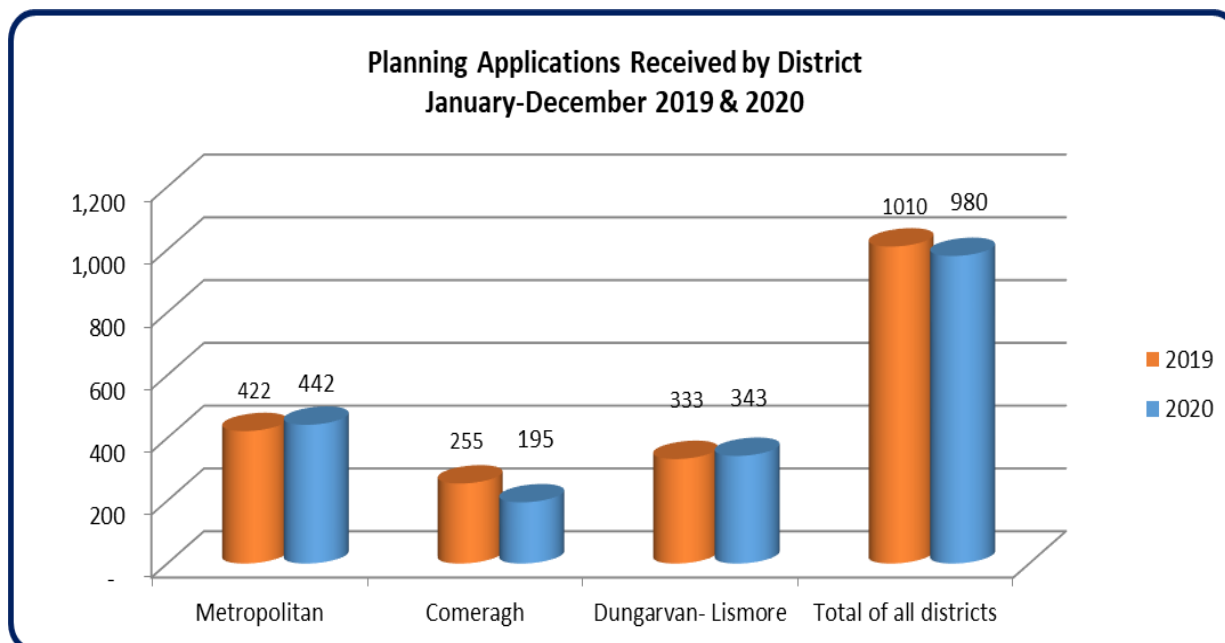
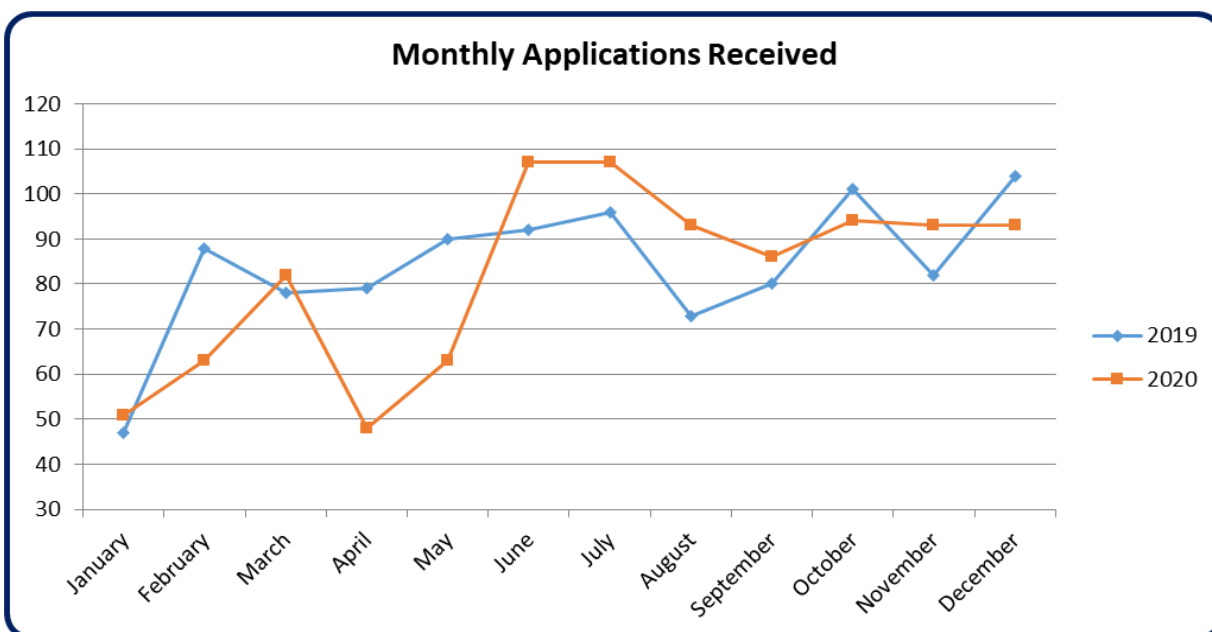
Shop Waterford Support Local

The Communications section continues to promote the Shop Waterford brand through its social media channels, through WLR sponsorship and promotion of the Waterford Chambers' Shop Local voucher scheme.

Pleanáil / Planning

Planning Applications Received – Countywide

93 Planning applications were received in the month of December countywide (to 21st December). This compares with 104 planning applications received in the same month in 2019. Additional responses are also being received to further information requests. A total of 980 planning applications were received in the year to 21st December 2020. This compares to 1010 planning applications which were received in 2019



Direction to the Chief Executive regarding the preparation of the draft Waterford City and County Development Plan 2022-2028.

Following workshops held with Members from each Municipal District during December 2020, in order to consider the Chief Executive (CE) Report on the pre-draft development plan public consultation process, a number of important issues were identified which have been compiled to form a draft direction by the Council to the CE, pursuant to Section 11(4) (d) of the Planning and Development Act 2000, as amended. A final workshop with the Plenary Council to discuss the content of the draft direction was held on 7th January. The outcome of these discussions will be issued for your consideration prior to the January Plenary meeting to allow the direction be given before to the 18th of January which is the deadline for giving of the direction as previously highlighted.

As stated previously any directions to the Chief Executive regarding the preparation of the draft development plan, shall be strategic in nature, be consistent with the draft core strategy, and shall take account of the statutory obligations of any local authority in the area and any relevant policies or objectives for the time being of the Government or of any Minister of the Government. Section 12 (18) of the Planning and Development Act 2000, as amended, states – “statutory obligations’ includes, in relation to a local authority, the obligation to ensure that the development plan is consistent with—

(a) The national and regional development objectives specified in—

- (i) The National Planning Framework, and
- (ii) The Regional Spatial and Economic Strategy, and

(b) specific planning policy requirements specified in guidelines under subsection (1) of section 28.”

In issuing directions, the Members shall be restricted to considering the proper planning and sustainable development of the area to which the plan relates.

Planning SPC

A meeting of the SPC will be held on the Thursday 21st January. In addition to identifying a programme for the SPC in 2021, the main items for consideration at the meeting will be:

- *Presentation by Southern Regional Assembly on role of Southern Regional Assembly and Waterford City MASP;*
- *Presentation by Public Participation Network (PPN) on securing a viable future for our rural settlements; and,*
- *Review of National Development Plan.*

Bóithre agus Iompar / Roads and Transportation

Road Works Programme 2021

The DTTAS allocation is expected towards the end of January and once received workshops will be arranged for each District Council to review the draft Programme for 2021.

2021 National Roads Allocations

The TII recently announced the 2021 grant allocation for Waterford City and County Council. The total allocation for the coming year is €10,888,666 as detailed below:-

TII - 2021 National Roads Allocations

| Classification | IMPROVEMENT WORKS | |
|--------------------|--|--------------------|
| Both NP & NS | HD15 and HD17 Minor Works | €112,822 |
| | LA Eng Support | €2,070,000 |
| National Primary | Pavement | €300,000 |
| | HD15 & HD17 Minor Works Lemybrien Traffic Calming | €1,000,000 |
| | Minor Works N25 Cushcam Junction | €1,500,000 |
| | Pavement 25 Lemybrien Pavement Overlay | €600,000 |
| National Secondary | N25 The Burgery | €1,427,434 |
| | HD15 & HD17 Minor Works N72 Military Road | €80,000 |
| | N72 Kealroe Pavement Strengthening Phase 2 Cappagh to Ballylemon | €1,500,000 |
| | N72 Lismore to Ballymartin South Pavement | €1,113,499 |
| | HD28 NS Pavement Renewals Ballyrafter Junction | €833,544 |
| | Total Improvement Allocation | €10,537,299 |
| | MAINTENANCE | Allocation |
| Both NP & NS | LA Engineering Support | €49,800 |
| National Primary | Ordinary Maintenance | €120,104 |
| | Route Lighting | €32,793 |
| | Winter Maintenance | €64,500 |
| National Secondary | Ordinary Maintenance | €44,814 |
| | Route Lighting | €9,856 |
| | Winter Maintenance | €29,500 |
| | Total Maintenance Allocations | €351,367 |

Winter Maintenance Programme - December 2020

Gritting and salting of roads continued during December with crews out on 17 nights during the month.

Tithíocht / Housing

Housing Applications

| 2020 Housing Loans | Applications received | Applications awaiting further info | Applications refused | Applications approved | Applications with Housing Agency/deferred for 6 months |
|--------------------|-----------------------|------------------------------------|----------------------|-----------------------|--|
| December | 7 | 4 | 5 | 3 | 5 |
| YTD | 51 | 4 | 29 | 23 | 5 |

Tenant Purchase applications

| 2020 Tenant Purchase | Applications received | Applications awaiting further info | Applications refused | Applications approved | Sales Closed |
|----------------------|-----------------------|------------------------------------|----------------------|-----------------------|--------------|
| December | 3 | 0 | 1 | 2 | 1 |
| YTD 2020 | 61 | 2 | 21 | 34 | 13 |
| YTD 2019 | 59 | 17 | 12 | 30 | 21 |

1 Tenant Purchase sales closed in December - Waterford City West

Housing Assistance Payment

| Housing Assistance Payment | December 2019 HAP tenancies | December 2020 HAP tenancies set up | 2020 no. of Active HAP Tenancies set up | Cumulative no. of HAP Tenancies Set up to date | Cumulative no. of Active HAP Tenancies to date |
|----------------------------|-----------------------------|------------------------------------|---|--|--|
| HAP Tenancies | 643 | 636 | 175 | 3812 | 2127 |

Inspections of Dwellings

| 2020 | Dec-20 |
|-------------------------------------|-----------|
| HAP | 16 |
| Compliant | 1 |
| Non-Compliant | 15 |
| <i>of which were Re Inspections</i> | 1 |
| RAS | 7 |
| Compliant | 0 |
| Non-Compliant | 7 |
| <i>of which were Re Inspections</i> | 1 |
| LTL | 8 |
| Compliant | 1 |
| Non-Compliant | 7 |
| <i>of which were Re Inspections</i> | 3 |
| MTR | 3 |
| Total | 34 |

In December, Waterford City & County Council carried out 149 planned and reactive inspections of our housing stock. As a result of these inspections 37 properties have had improvement works carried out to meet the standards for rented accommodation.

Housing Adaptation for People with a Disability, Housing Aid for Older People and Mobility Aid Grants

| Grant Scheme Amount | Number of applications approved December 2020 | Value of applications December 2020 | Cumulative number of applications approved 2020 | Cumulative value of 2020 applications |
|---|---|-------------------------------------|---|---------------------------------------|
| Housing Adaptation for People with a Disability. Max. €30,000 | 3 | €26,747.00 | 50 | €525,413.81 |
| Mobility Aids Scheme Maximum €6,000 | 2 | €12,000.00 | 51 | €283,942.28 |
| Housing Aid for Older People Maximum €8,000 | 1 | €2,718.59 | 52 | €239,703.73 |
| Total | 6 | €41,465.59 | 153 | €1,049,059.82 |

Homeless Services

| Waterford Integrated Homeless Services (WIHS) (Opened 25 th February 2019) | Dec. 2020 | Dec. 2019 |
|---|--------------------|--------------------|
| Number of callers seeking services in WIHS 1 st to 31/12/20 (3,379 callers in total in 2019) | 270 (3,744 TTD) | 274 (3,379 TTD) |
| Number of presentations to WCCC Homeless Services 1 st to 31/12/20 (1,219 presentation in total in 2019) | 93 (1,267 TTD) | 88 (1,091 TTD) |
| Number of Formal Homeless Assessments 1 st to 31/12/20 (*Total to date) | 61 (762 TTD*) | 55 (905 TTD) |

| Emergency Accommodation (EA) | December 2020 | December 2019 |
|--------------------------------|---------------|---------------|
| Number of Single Persons in EA | 72 | 85 |
| Number of Families in EA | 11 | 12 |
| Number of children in EA | 29 | 27 |

5. MANAGEMENT REPORT PLENARY 14TH JANUARY 2021

| Exits from Emergency Accommodation (EA) (Not Recorded in 2019) | December Singles | December Families |
|---|---------------------|----------------------|
| Number of exits from EA | 18 | 1 |
| Number of exits from EA to a new tenancy | 4 | 1 |

| HAP Place Finder Service | Dec. 2020 | Cumulative (06.11.18 to 31.12.20) |
|--|-----------|---|
| Number of approval letters issued 1 st to 31 st December 2020 (257 approval letters issued to 31/12/2019) | 21 | 565 |
| Number of HAP Place Finder Tenancies HUB Complete (117 tenancies set up to 31/12/2019) | 7 | 312 |
| Number of HAP Place Finder Tenancies currently being processed (as at 31/12/2020) | 29 | N/A |

| Housing First Programme | Tenancies |
|---|-----------|
| Number of Housing First tenancies in place at 31 st Dec 2020 (Target = 30 by June 2021) | 26 |

Homeless preventions, supported exits and sustained tenancies continue to be the priorities for Homeless Services in 2020. This will be achieved by continuing our partnership and collaborative working with the HSE and the various Homeless Service Providers in Waterford and by utilising our various projects in WIHS including our Homeless Prevention & Support Service, Advice & Information Service, Tenancy Support & Sustainment Service and the Housing First Service.

Capital Projects

| Housing Capital Schemes - WCCC Projects | | | | |
|---|-------|-------------------|------------------------|---|
| Project Location | Units | Area | Current Position | Comment |
| The Glen Waterford | 17 | Metropolitan | Appraisal/Design Stage | Stage 2 Approved. Revised proposal to be brought to Council workshop |
| Summerland Square Waterford | 12 | Metropolitan | Tender Design | Tender Q4 2020. |
| Ardmore Park / Priory Lawn | 5 | Metropolitan | Completed | Completed |
| Larchville | 5 | Metropolitan | Construction | Construction in Progress |
| Dungarvan Ballinroad | 21 | Dungarvan-Lismore | Completed | Completed |
| Tramore An Garran | 50 | Metropolitan | Tender Design | Tender Q4 2020 |
| Doyle Street | 4 | Metropolitan | Construction | Construction in Progress |
| Slievekeale | 58 | Metropolitan | Construction | Construction in Progress |
| Mount William, Williamstown Rd | 65 | Metropolitan | Turnkey | Construction in Progress |
| Clarendon Court | 24 | Metropolitan | CPO | Negotiations with owners on-going – potential Repair and Lease Scheme |
| Knight's Grange | 55 | Metropolitan | Construction | Completed |
| Ballynaneashagh | 22 | Metropolitan | Tender Design | Part 8 approved |
| Ballygunner | 49 | Metropolitan | Tender Design | Tender Q4 2020 |
| Kilmacthomas | 16 | Comeragh | Tender Design | Tender in progress |
| Mount Esker, Ballytruckle | 14 | Metropolitan | Tender Design | Part 8 approved. |
| Estuary Heights, Shandon, Dungarvan | 20 | Dungarvan/Lismore | Completed | Completed |
| Railway Gardens, Lismore | 17 | Dungarvan/Lismore | Construction | Construction in Progress |
| Mount Suir, Carrickphierish | 18 | Metropolitan | Completed | Completed |
| Brideview Close, Tallow | 2 | Dungarvan/Lismore | Completed | Completed |
| Barnes Lane, The Glen | 2 | Metropolitan | Completed | Completed |
| Part V | 26 | Countywide | Various Stages | Delivery On-going 2019 – 16 2020 – 10 (est) |
| Repair and Lease | 151 | Countywide | Various Stages | Delivery on-going 2019 – 41 |

5. MANAGEMENT REPORT PLENARY 14TH JANUARY 2021

| | | | | |
|---|-----|--------------|--------------------|--|
| | | | | 2020 – 40 (est) 2021 – 50 (est) |
| Leasing | 130 | Countywide | Various Stages | Delivery on-going 2019 – 30 2020 – 50 (est) 2021 – 50 (est) |
| Buy and Renew – Barker Place | 16 | Metropolitan | Completed | Completed |
| Buy & Renew – Thomas Court | 11 | Metropolitan | Tender Preparation | Works Tender Q4 2020 |
| Buy & Renew – Manor Court | 4 | Metropolitan | Completed | Completed |
| Buy & Renew – 42/43 Doyle Street | 2 | Metropolitan | On Site | Construction in progress |
| Buy & Renew – Countywide | 8 | Countywide | Tender Preparation | In progress |
| Total Units in WCCC Projects 824 | | | | |

| Housing Capital Schemes - Approved Housing Body Projects | | | | |
|--|-------|--------------|------------------|-----------------------------|
| Project Location | Units | Area | Current Position | Comment |
| Tramore, Ballycarnane <i>Tramore Voluntary Housing</i> | 18 | Metropolitan | Design Stage | Awaiting progress from AHB. |
| Dunhill <i>Gleann Ealach</i> | 8 | Comeragh | Design Stage | Planning refused |
| Powersfield, Hennessy's Road <i>Focus Ireland</i> | 3 | Metropolitan | Design Stage | Awaiting progress from AHB |
| The Paddock's <i>Anvers/Acquired Brain Injury Ireland</i> | 9 | Metropolitan | Construction | Completed |
| Wadding Manor, Ferrybank <i>Respond!</i> | 10 | Metropolitan | Design Stage | Completion Q4, 2020. |
| Kilbarry, 6 Cross Roads <i>Respond!</i> | 69 | Metropolitan | Appraisal | Completed |
| Fairfield Park <i>Circle VHA</i> | 40 | Metropolitan | Construction | Completed |
| Total Units in Approved Housing Body Projects 157 | | | | |

Refurbishing of houses becoming vacant for re let:

| December 2020 | Metro | Comeragh | Dungarvan / Lismore | TOTAL |
|----------------------------------|-------|----------|------------------------|-------|
| Handed Over / Works Completed | 4 | 0 | 4 | 8 |
| Newly vacant | 4 | 1 | 2 | 7 |

Compulsory Purchase Orders

In compliance with the Council's Vacant Homes Action Plan, Waterford City & County Council have an ongoing programme to deal with property vacancy that currently involves sixteen (16) Compulsory Purchase Orders that target twenty (20) individual properties. So far, all sixteen (16) of these Compulsory Purchase Orders have been confirmed by An Bord Pleanála. These properties have all been identified as vacant, in private ownership and are located countywide. It is proposed to extend the initiative to reduce vacancy to all areas of the county.

Seirbhísí Pobail / Community Services

Rural Development Programme:

- LCDC approved €405,000.00 in funding for four projects at the December Meeting.
- Payments are progressing smoothly to applicants
- All projects approved to date by the LCDC are progressing to completion
- The final allocations under the current LEADER Programme will end in March 2021
- €550,000 will be allocated by the LCDC to projects in February and March 2021
- Over the life of the current programme, the number of project de-committals, i.e. where the project hasn't gone ahead after approval is minimal
- The next EU led Leader program will not commence until January 2023. The Department of Rural and Community Development have announced a transitional Leader program to commence in April 2021 which will bridge the gap between the wind up of the existing program and the implementation of the new program.
- The New Transitional Programme will focus on a number of key areas in preparation for the 2023 LEADER Programme
- The key areas of focus will be REDZ (Rural Economic Development Zones), Green Technology, Green Businesses, Information Technology (Broadband applications), Climate Change actions and Biodiversity.

COVID-19

➤ 2nd Round of Covid-19 Emergency Fund

In December the Department of Rural & Community Development allocated €54,223 to Waterford Council. It will provide grants to community groups to assist them to adapt their services and operations to fit the new COVID-19 reality and to become more involved in the Government's 'Keep Well' campaign. The grants are aimed at assisting participation in the campaign, in particular with the three themes: staying connected, switching off and being creative, and minding your mood. The closing date for applications is 4pm Tuesday 26th January.

- €67,225 allocated to WCCC under Healthy Ireland Fund towards Covid 19 "Keep Well" campaign.

Comhairle na nÓg:

The young people continue to meet regularly using Zoom. The funding application for 2021 and annual report/return to the Department has been made.

Waterford Age Friendly Programme:

Most thematic sub-groups have had meetings to assess workplan 2020 outcomes and plan for 2021. The OPC are actively engaged in the Community Response Forum and also assisting in the Keep Well Campaign through the Stay Connected Programme providing valuable suggestions of potential projects that could be undertaken.

Healthy Waterford:

Funding received is supporting initiatives including active community initiatives, disability actions, social farming and mental health.

PPN

714 groups registered with the PPN: 574 Community pillar; 115 Social Inclusion pillar; 25 Environment pillar.

JPC:

The next JPC meeting will be a special meeting with representatives from the Department of Justice to discuss the new Local Community Safety Partnerships. This meeting will be held on Monday 15th January via Zoom. The following JPC meeting will be held on 1st March 2021.

Social Inclusion:

(i) SICAP

For 2020, up to 9th December, Waterford Area Partnership as Programme Implementer on behalf of the LCDC , has had 358 engagements with 64 local community groups and has supported 9 social enterprises. WAP have supported 540 individuals, 153 of whom are living in disadvantaged areas.

(ii) TIG

The Waterford Traveller Interagency Group continues to meet regularly by way of Zoom and the last meeting was on December 2nd. Needs Analysis being carried out.

Seirbhísi Éigeandála / Emergency Services

Fire Service Operational Activity:

Total call outs to incidents attended by the 10 fire stations of the Fire Authority are shown for 2020 and for the month of December. Emergency response has continued uninterrupted throughout the Covid 19 crisis with significant precautionary measures put in place to ensure the safety of fire crews and the community served.

| Area | Fires | Special Service | False Alarm Good Intent | False Alarm Malicious |
|------------------------------------|------------|-----------------|----------------------------|--------------------------|
| Metropolitan | 24 | 23 | 11 | 1 |
| Comeragh | 0 | 1 | 0 | 0 |
| Dungarvan/Lismore | 15 | 21 | 4 | 0 |
| Total for December | 39 | 45 | 15 | 1 |
| Total for 2020 | 701 | 448 | 179 | 16 |
| <i>Total for December 2019</i> | 37 | 40 | 15 | 2 |
| <i>Total for 2019</i> | 734 | 428 | 181 | 11 |

Fire Safety:

The following applications for fire safety certificates have been received with comparison shown for the same period last year

| Applications Received | December 2020 | 2020 Year to date | <i>Total for December 2019</i> | <i>Total for 2019</i> |
|-----------------------------|---------------|----------------------|------------------------------------|-----------------------|
| Fire Safety Certificates | 8 | 84 | 8 | 113 |

Building Control:

New functions associated with the Building Control Regulations, introduced on 1st March 2014, are being delivered within Emergency Services. Notices and applications associated with these regulations are shown below.

| Application/Notification | December 2020 | Cumulative Total for 2020 | <i>Total for December 2019</i> | <i>Total for 2019</i> |
|--------------------------------|------------------|------------------------------|--|-----------------------|
| Commencement Notices | 18 | 284 | 12 | 339 |
| Completion Certificates | 12 | 224 | 20 | 236 |
| Disability Access Certificates | 3 | 44 | 8 | 83 |

Civil Defence:

Civil Defence activities during the month of December 2020 consisted solely of Covid-19 Response duties.

Essential Tasks undertaken were:

- PPE training.
- Vehicle preparation.
- Vehicle Cleaning and Decontamination.
- Mission Planning and Communications.
- Patient Transportation.
- Assisting the Blood Transfusion Service in the Woodlands Hotel.
- Collection and delivery of prescriptions for Customer Care Helpline.

Patient Transportation was provided by Civil Defence volunteers to members of the community with no other available means of transport. This was only made possible by the cooperation and dedication of Civil Defence Volunteers.

Transportation tasks included to and from:

- Nursing Homes.
- Clinical appointments (e.g. doctors, dental, radiotherapy, etc).
- Hospital Appointments in South Tipperary General Hospital Clonmel, Cork CUH, Waterford UHW and Whitfield.

At all times stringent measures were put in place to ensure the safety of Civil Defence volunteers and those members of the community served.

Training has resumed on line via Zoom.

Seirbhísí Comhshaoil / Environmental Services

Environmental Enforcement Statistics

Enforcement under the Litter Pollution Acts 1997 (as amended)

1st January 2020 – 31st December 2020.

| | |
|---|-----|
| Legal Action Initiated | 9 |
| On the Spot Litter Fines Issued (Pending Payment or Prosecution) | 204 |
| On the Spot Litter Fines Paid (Includes Fines from 2016 paid in 2017) | 140 |
| No of Notices Issued 9,16,17,20 | 0 |

Enforcement under the Waste Management Acts 1996 (as amended)

1st January 2020 – 31st December 2020.

| | |
|---|------|
| No of Complaints | 3001 |
| Legal Actions | 4 |
| Section 18's Statutory Notices Served (asking for info on Waste Issues) | 1 |
| Section 55's Statutory Notices Served (asking for Waste to be removed in a 2 week period) | 26 |
| Section 71's (Abandoned Vehicle Notices) | 132 |
| Warning Letters Sent (Packaging Info & Notice Follow Up) | 234 |
| Section 14 Directions | 24 |
| Section 107 EPA (Noise) | 0 |
| Fixed Penalty Notices on Waste Collectors | 0 |
| Regulation 33 - Requirement on a Registered Owner to deposit an End-of-Life Vehicle at an Authorised Treatment Facility. (European Union End-of-Life Vehicles) Regulations 2014 – Fixed Penalty Notice. | 1 |
| Regulation 25 of the European Union (Packaging) Regulations 2014 (S.I. No. 282 of 2014) as amended | 1 |
| Household Bin Presentation Byelaws (2018) Letters | 1073 |

Environmental Education & Awareness

(i) Schools

January, February and March are usually busy months for our work with Green Schools. This year, Green Schools assessments and meetings are taking place online, in accordance with An Taisce's recommendations. Green School Committees will continue engage with schools via Zoom. School workshops have moved online for now and schools are taking up the opportunity to receive workshops and talks online now, particularly waste prevention and recycling workshops. Schools have taken part in virtual workshops about recycling and waste prevention to date.

(ii) Waste prevention

LAPN funding was recently granted by the EPA for two associated projects:

The first of these is a joint project with Carlow County Council and Kilkenny County Council (with Waterford City & County Council as the lead authority in this project) to prevent paint waste by raising awareness about top tips to purchase, store and dispose of paint to create least waste. The over-purchasing of paint has been an ongoing issue in Ireland and has particularly escalated during COVID 19. In previous hazardous waste collection days at our Civic Amenity Sites, we have noticed a significant collection of non-hazardous paints. In order to prevent wasted paint, we are raising awareness of how to calculate paint required, store paint, dispose of paint, etc. These tips are being shared online through social media posts and videos, on radio and at point of sale in hardware and paint shops. <https://vimeo.com/481622966/6a89c369dc> The final set of these radio advertisements will take place in January on Beat FM.

The second project receiving funding from the EPA is a feasibility study to assess the viability of establishing a paint reuse social enterprise in Co. Waterford working through one of our Civic Amenity Sites. We are currently exploring this with a social enterprise based in Waterford and hope to begin the paint reuse in February.

(iii) Litter

Waterford City & County Council continues to offer assistance throughout the year to the general public and schools to clean up litter and illegally dumped waste from their local environs e.g. approach roads, local beauty spots, beaches and general public areas. These clean ups continue throughout the winter months.

We are beginning work with Kilkenny and Wexford County Councils on a dog fouling litter awareness campaign in January for the Spring.

Waterford Energy Bureau**(i) SEAI Better Energy Communities Scheme.**

WCCC are open to partner with community groups to include buildings within the 2021 “SEAI Better Energy Communities Scheme”. Funding of between 30% is available for businesses and 50% for community projects. Community building upgrades can include insulation, heating system, renewable energy technologies etc. WCCC also require fuel poor /private houses to be included within the funding application, where 35% funding is available for private houses and 80% for fuel poor housing for a range of energy efficiency upgrades including insulation

measures, windows / doors, heat pump installations etc. There is a minimum requirement to bring each house up to a “B2” energy rating.

(ii) Climate Action Fund - Retro fitting of public lighting

A tender for the retro fitting of 15,000 public lights within Waterford is currently being assessed. This tender is part of a larger Southern region tender process and funding has been received for to complete the retro fitting from the Department of Communication, Climate Action and Environment under the Climate Action Fund. Retro fit works are due to begin in Waterford in late 2021 following the completion of the tender process.

(iii) Climate Change Adaptation Plan

The WCCC “Climate Change Adaptation Plan” is being implemented. The plan details the how Waterford City and County Council will implement Climate Change Adaptation measures to reduce the impact of Climate Change. The first meeting of the WCCC “Climate Action Team”, took place in December.

(iv) Covenant of Mayors Initiative

WCCC have joined the “Covenant of Mayors Initiative”, which is the world’s largest movement for local climate and energy actions. Signatories have endorse a share vision for 2050, accelerating the decarbonisation of their territories, strengthening their capacity to adapt to the unavoidable climate change impacts and allowing their citizens to access secure, sustainable and affordable energy. WCCC have pledged action to support implementation of the EU 40% greenhouse gas-reduction target by 2030 and the adoption of a joint approach to tackling mitigation and adaptation to climate change.

(v) Support Scheme for Renewable Heat

The “Department of Communication, Climate Action and Environment”, has launched a “Support Scheme for Renewable Heat” (SSRH). This scheme includes grant funding for air-source heat pumps for businesses and farmers and tariff payment for biomass boilers, biomass / anaerobic digestion CHP’s and anaerobic digestion boilers. The SSRH scheme is operated by SEAI and open to applications.

(vi) Electrical Vehicle Charging Points

WCCC have prepared an initial strategy for electrical vehicles charging points. A funding application to SEAI for the installation of electrical vehicle charging points in Waterford is being prepared. EV charging points will be located at strategic locations throughout Waterford and be installed on a phased basis.

Ealaíona & Cultúr / Arts & Culture

Libraries

In December 7 branches were open to the public, 7,467 people visited libraries throughout the County and borrowed 17,661 items during the month. Active membership of the Library Service for December was 14,208. In December 38 events took place including;

- Family Time at your Library events and activities
- Library Ireland Week 'Libraries Endure' Continuity in Crisis video
- #KeepWell Campaign- Switching Off and Being Creative events and activities
- Digital Connectivity and Access to Learning initiative events and activities
- Collecting Waterford Memories, Diverse Waterford Oral History Project
- Dungarvan Aglow 'It's a wonderful life' Creative Windows project
- Keeping Well, Eat Well - Healthy Ireland webinar on Boost your Mood with Food
- Waterford Libraries website STEAM Zone events and activities
- Glass Room Media Literacy Exhibition launch

Upcoming Online Events in January:

- Continuation of #KeepWell Campaign- Switching Off and Being Creative events and activities
- Continuation of Digital Connectivity and Access to Learning initiative events and activities
- Waterford Libraries website STEAM Zone Build Waterford project with Europe Direct
- First Fortnight Festival Mind Reading promotion

Library Development:

- Ongoing Covid-19 compliance monitoring in branches in line with ongoing changes in Government led restrictions, reopening of Cappoquin Library and preparations underway to reopen other smaller branches when government guidelines allow
- Library marketing including; RTE Radio One Interview with Dungarvan Executive Librarian, local radio staff interviews and week-long tablet giveaway and library promotion through new WCCC App 'WIRE'
- Library participation in Waterford Covid-19 Community Response forum and #KeepWell Campaign Survey to better understand patron digital connectivity needs
- Age Friendly Library work ongoing with Older People's Directory of Services development

- Small Scale Capital Works funded renovation underway in Central Library, planning and development for works in progress in Dungarvan library and Cappoquin libraries, window cleaning and lights changed in Carrickphierish Library
- Staff welfare and training including; Running Events through Zoom, Digital up skilling, 'Story Streets' encouraging families to use the library and read together, UCC History Research Seminar, Librarians as Accessibility Superheroes, Inclusion Zone – a case study in digital accessibility, podcasting course, Tar Isteach sharing hospitable creative practices, and staff social zooms and staff charity raffle for WLR Christmas Appeal

Arts

In December a workshop on the Arts Practice and Festival Grants took place with Councillors and allocations were approved at the December Council meeting.

The Waterford Gallery of Art, GOMA and the Old Market House Arts Centre, Dungarvan had an opportunity to open their doors to the public for their current exhibitions prior to Christmas. The Old Market House Arts Centre took part in the 'It's A Wonderful Life' creative windows project.

Waterford is part of a national programme with the Arts Council for a project called 'Platform 31' for mid career artists to develop their practice. Adjudication has taken place on the Waterford applications which now go forward for consideration in the national context. One artist per local authority will be selected for a bursary of €8,000.

Literature workshops on line took place in December in association with the Molly Keane Writers Retreat, Ardmore and more are currently being planned.

Online models of delivery for the Arts Education programme in primary schools in Waterford City & County are being finalised for when schools return after the Christmas break.

The Arts Office, Musicians in Healthcare settings continues to work with designated venues within current health restrictions and the musicians are currently under the mentorship of the national Training Notes teachers to enable them to develop the required skills to work in this area.

Airgeadas / Finance**Waterford City and County Council - Revenue Account Income & Expenditure Summary by Service Division
Y.T.D. to November 30, 2020**

| | EXPENDITURE | | | INCOME | | |
|--|--------------------|----------------------------|------------------------|--------------------|----------------------------|-----------------|
| | Expenditure € | Adopted Full Year Budget € | % Budget Spent to date | Income € | Adopted Full year Budget € | % Budget Raised |
| A Housing & Building | 25,648,310 | 29,535,621 | 87% | 26,939,112 | 31,511,289 | 85% |
| B Road Transport & Safety | 41,186,010 | 42,241,585 | 98% | 29,864,801 | 30,460,877 | 98% |
| C Water Services | 9,575,630 | 10,966,994 | 87% | 9,226,012 | 10,544,024 | 87% |
| D Development Management | 28,478,390 | 16,954,281 | 168% | 20,190,984 | 7,950,992 | 254% |
| E Environmental Services | 16,893,729 | 19,224,337 | 88% | 2,457,704 | 2,799,943 | 88% |
| F Recreation & Amenity | 12,541,130 | 14,480,800 | 87% | 1,409,320 | 1,819,371 | 77% |
| G Agriculture, Education, Health & Welfare | 971,672 | 1,058,043 | 92% | 447,347 | 489,290 | 91% |
| H Miscellaneous Services | 8,689,718 | 9,521,645 | 91% | 5,539,648 | 6,085,213 | 91% |
| LG Local Property Tax / GPG | 0 | 0 | 0% | 17,336,517 | 18,912,564 | 92% |
| RA Rates | 0 | 0 | 0% | 30,625,595 | 33,409,740 | 92% |
| | 143,984,589 | 143,983,305 | 100% | 144,037,040 | 143,983,305 | 100% |
| Surplus/Deficit | | | | 52,451 | 0 | |

5. MANAGEMENT REPORT PLENARY 14TH JANUARY 2021

| Summary of main collections Nov 2020 YTD | | | | | | | | | |
|--|--------------------------|-------------------------|--------------------------|------------------------------|---------------------------|---------------------------------|---|---|--|
| | [1] | [2] | [3] | [4] | [5] | | [6] | [7] | |
| | Gross Bal as at 1-1-2020 | Accrued ytd to Nov 2020 | Write Offs and Vacancies | Total for Collection [1+2-3] | Collected ytd to Nov 2020 | Gross Bal 30-11-2020 | % Collected ytd re Total for Collection [5/4] | % Collected ytd re 2020 Accrual [5/(4-1)] | |
| | | € | € | € | € | € | € | | |
| Rates | 9,198,695 | 33,615,612 | - 69,567 | 42,744,740 | 17,154,039 | 25,590,701 | 40% | 51% | |
| Loans | 2,020,136 | 2,994,363 | - 929 | 5,013,570 | 2,994,628 | 2,018,942 | 60% | 100% | |
| Rents | 4,108,720 | 13,448,888 | 3,542 | 17,561,150 | 13,046,475 | 4,514,675 | 74% | 97% | |
| Aged Analysis : | | | | | | | | | |
| | | | Less than 1 mth | 2 to 6 mths | 7 to 12 mths | greater than 12 mths | | Net Balance | |
| Rates | | | - | - | 18,352,603 | 7,238,098 | | 25,590,701 | |
| | | | 0 to 3 mths | 4 to 6 mths | 7 to 12 mths | Greater than 12 mths | | | |
| Loans | | | 209,620 | 116,456 | 256,203 | 1,436,663 | | 2,018,942 | |
| | | | Less than 4 weeks | 4-6 weeks | 7-12 weeks | Greater than 12 wks | | | |
| Rents | | | 475,936 | 386,698 | 624,666 | 3,027,375 | | 4,514,675 | |
| Overdraft Levels | | | | | | | | | |
| Days in Overdraft in Nov | 0 | | Cost - | €0.00 | | Average Value when in O/D : N/A | € | - | |