

South East Technological University

*Presentation by
Professor Veronica Campbell
President
SETU*

13th October 2022



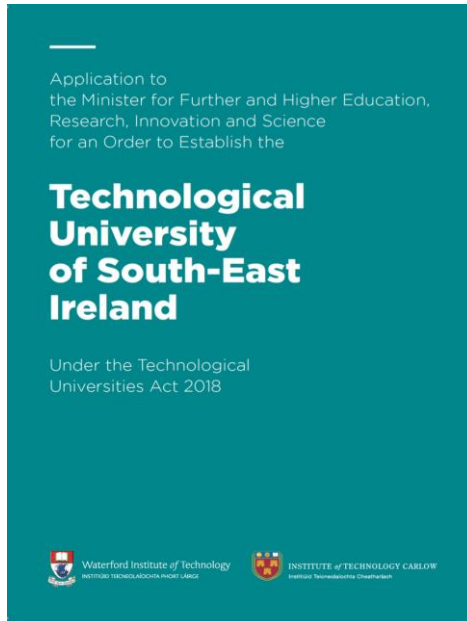
**SE
TU**

Ollscoil
Teicneolaíochta
an Oirdheiscirt
South East
Technological
University

setu.ie
INSPIRING FUTURES



SETU – the first university for South East Ireland

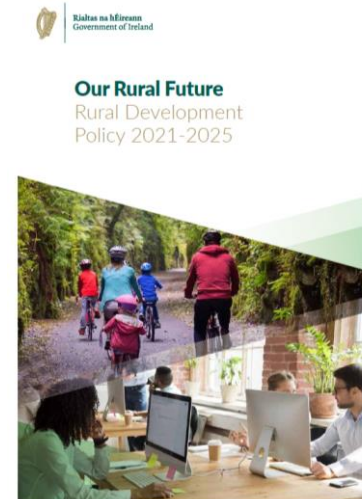
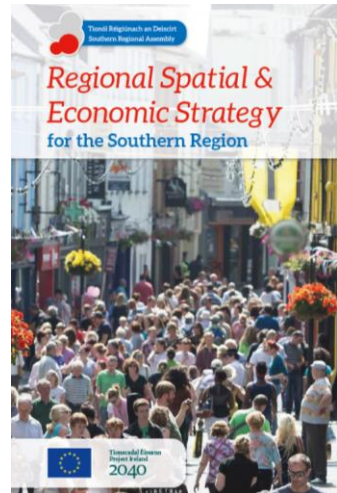
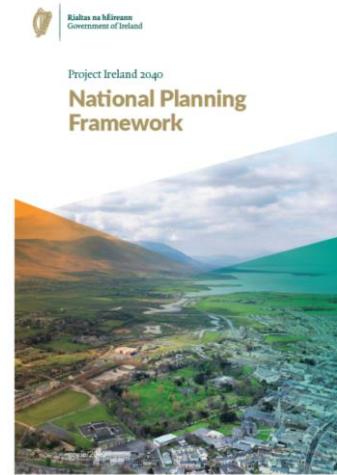


- Technological Universities Act 2018
- Application for TU Designation from IoT Carlow and Waterford IT submitted in 2021
- SETU designation day on 1 May 2022
- New Governing Body from 1 May 2022
- New President started mid-July 2022
- Planning of new strategic plan (2023-28) underway

SETU – transforming the South East

Expectation in policy that university will be transformative for the South East

- TU will “greatly **enhance the quality** of regional education and enhance the ability of higher education provision to **drive regional development**” (RSES)
- “The development of Technological Universities has the potential to **deliver greater opportunity** to students in the regions they serve, and to act as regional knowledge hubs. Technological Universities act as an **anchor for regional economic development**, research and innovation. They will help to attract further direct investment, research and innovation and will have a **major impact** on regional job creation and retention through stronger links to industry.” (Our Rural Future)
- Critical to future development will be the “**Enhancement** of the higher education infrastructure through the expansion and development of Waterford Institute of Technology in the context of the Technological University of the South East” (RSES)
- “By creating institutions of scale and strength, multi-campus technological universities will bring **greater social and economic benefits** to their regions through a strengthened role in research and innovation and the delivery of a broad range of high quality education and training in each of their campuses.” (Project Ireland 2040)
- The development of the TU in the SE will “allow Waterford to advance as a modern European University City, supporting **innovation, creativity and enterprise**” (RSES)



SETU's Ambition

To be a Leading European Technological University that will bring new knowledge, networks & opportunities into the South East

- Strategic Plan for SETU to be developed in Q4 2022, focussing on 4 pillars of **Engagement, Access, Research, Skills/Entrepreneurship**
- SETU has challenging targets to grow **RDI capacity, Postdoctoral & Ph.D. student** numbers in the next 7 years in line with **TU legislation and IMPACT 2030**
- **Programme portfolio** to equip graduates / employers with the skills needed to address digital literacy, sustainability challenges, critical thinking & innovation
- Expand our **Physical & Digital Campus** Infrastructure



SETU Programmes – **developing talent**

- Focussed on improving educational access & enhancing talent retention in the region
- Work based learning is a significant feature in our programmes
- Our programmes are validated by industry, professional, statutory and regulatory bodies
- Enabling Lifelong Learning & providing flexible pathways
- Springboard+ and other labour market activation programmes are endorsed by industry & informed by future skills needs, Regional Skills Forum & Industry Clusters
- Bespoke programmes co-designed with partners (e.g., Irish Prison Service, Irish Defence Forces, SunLife)



SETU's global network – **attracting talent**

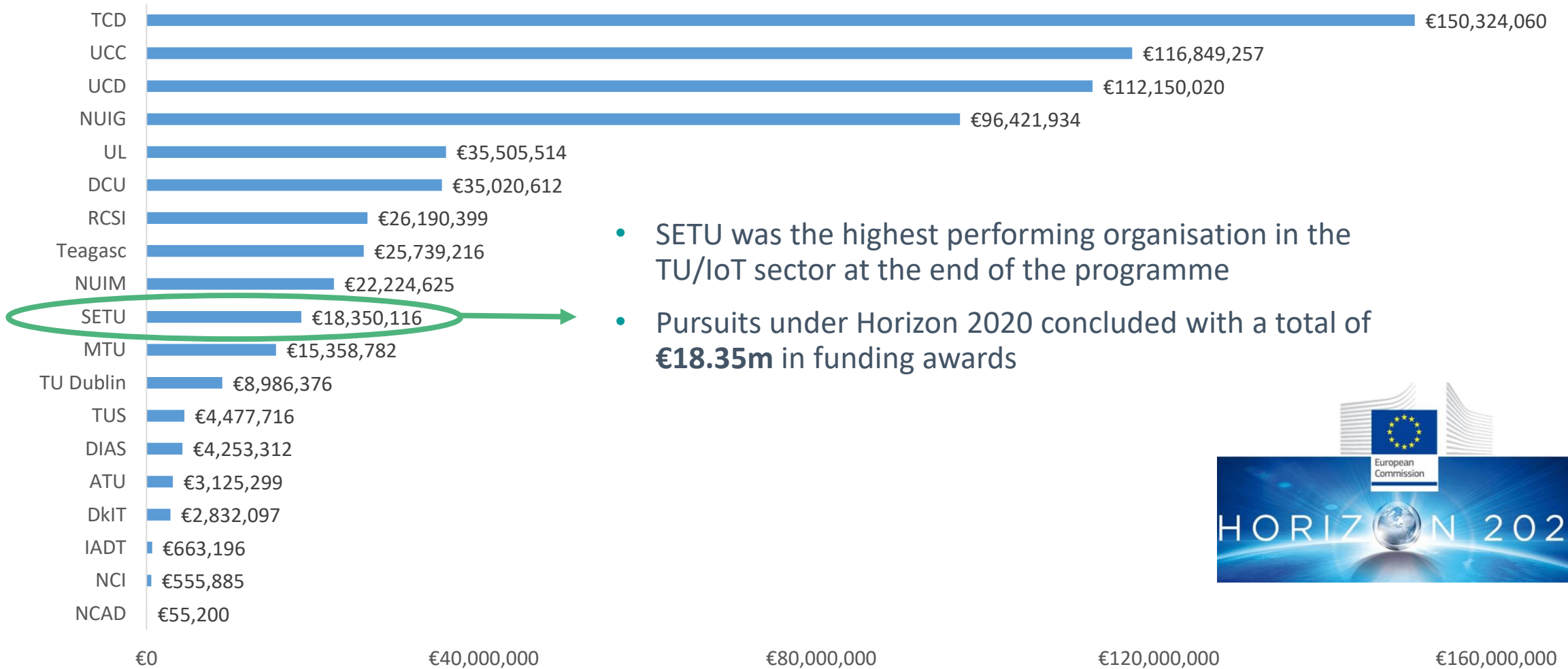
- Focus on internationalisation of the curricula, student cohort, learning experience & networks
- 600+ non-EU and 270+ EU enrolments anticipated for 2022/23
- SETU is a member of the European University Alliance EU-CONEXUS – European University focussed on Smart Urban Coastal Sustainability
- Joint partnership with HEIs in China – NUIST & HUAHE
- Academic & Civic Partnerships in the US



SETU's Research Profile— **advancing the knowledge economy**

- Key areas of strength - **Agri-Food & Eco Innovation, Advanced Manufacturing, Software Engineering & Telecomms, Pharmaceuticals and Bio-pharmaceuticals**
- SETU has 4 EI funded Technology Gateway Centres – SEAM, PMBRC, Design + and The Walton Institute
- SETU is partner in 6 SFI national research centres
- 500+ research active staff & circa 500 research postgraduate students
- Research expenditure 2021 - €26m

Significant EU RDI Partnerships through EU H2020

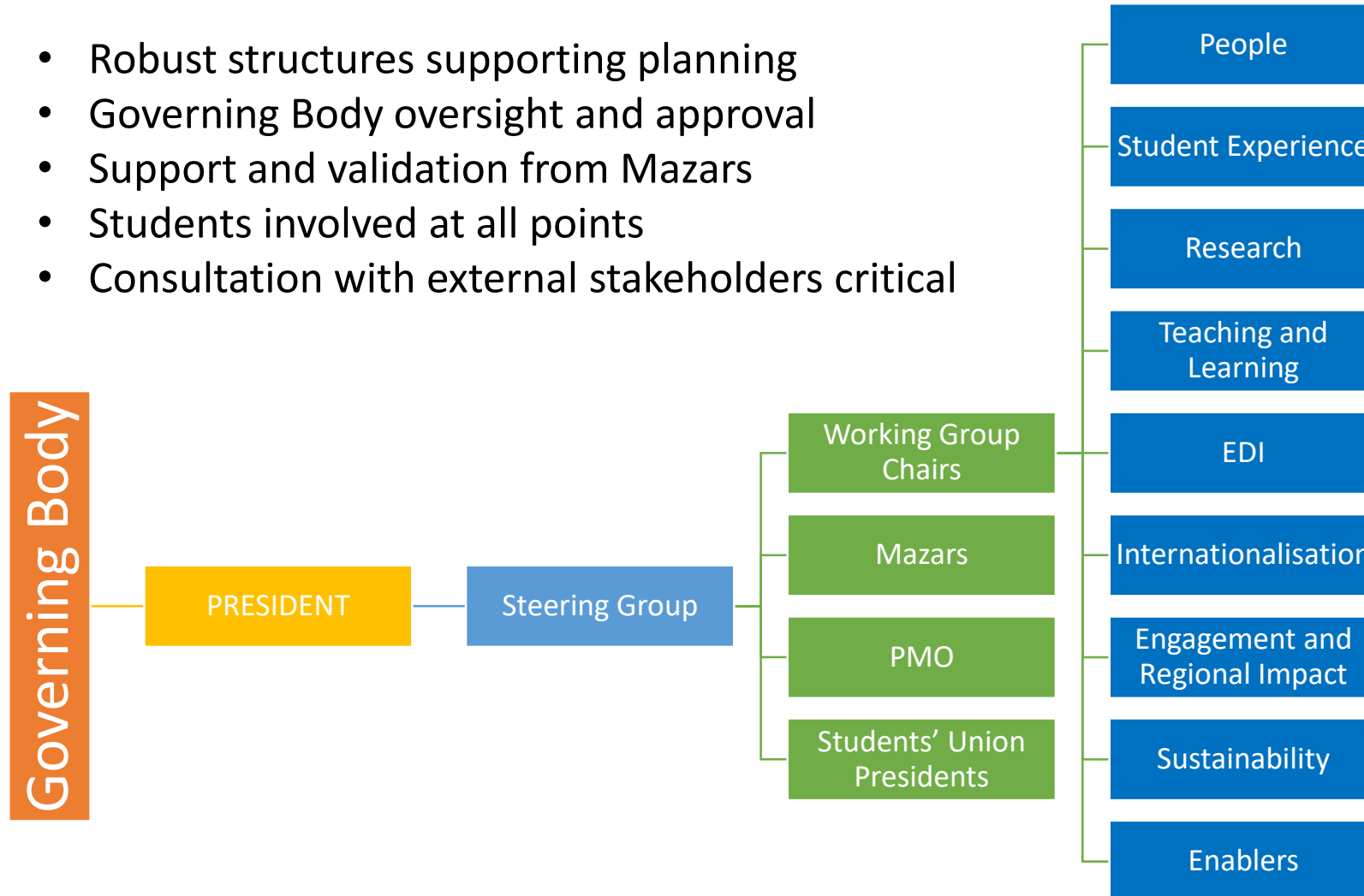


- SETU was the highest performing organisation in the TU/IoT sector at the end of the programme
- Pursuits under Horizon 2020 concluded with a total of **€18.35m** in funding awards



Strategic Plan 2023-2028

- Robust structures supporting planning
- Governing Body oversight and approval
- Support and validation from Mazars
- Students involved at all points
- Consultation with external stakeholders critical



Thank you

setu.ie
INSPIRING FUTURES

