

Waterford Ireland's **Best** Place **To Live**



Comhairle Cathrach & Contae Phort Láirge
Waterford City & County Council

Local Economic & Community Plan
23rd February 2022

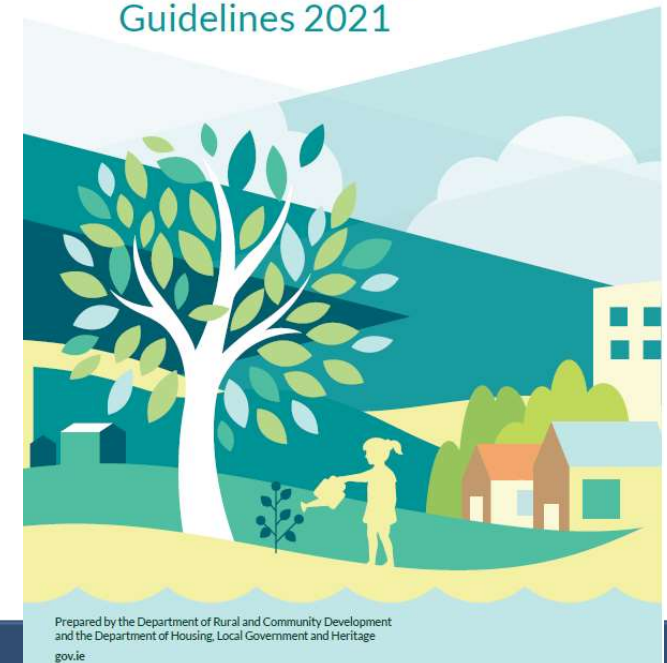
LECP Framework

- The making of the plan is a reserved function of the elected members of the Local Authority;
- Preparation of the economic elements of the LECP is the responsibility of the Local Authority (generally SPC);
- Preparation of the community elements of the LECP is the responsibility of the LCDC;
- Consultation with the Regional Assembly is required to ensure the consistency of the LECP with the RSES and adoption of a statement on the draft of both elements of the Plan by the assembly;
- Consultation with the Municipal District members is required to ensure consistency between the economic and community elements and consistency with the core strategy and objectives of the statutory Development Plan, and adoption of a statement on the draft of both elements of the LECP by the Municipal District members is a reserved function.



Rialtas na hÉireann
Government of Ireland

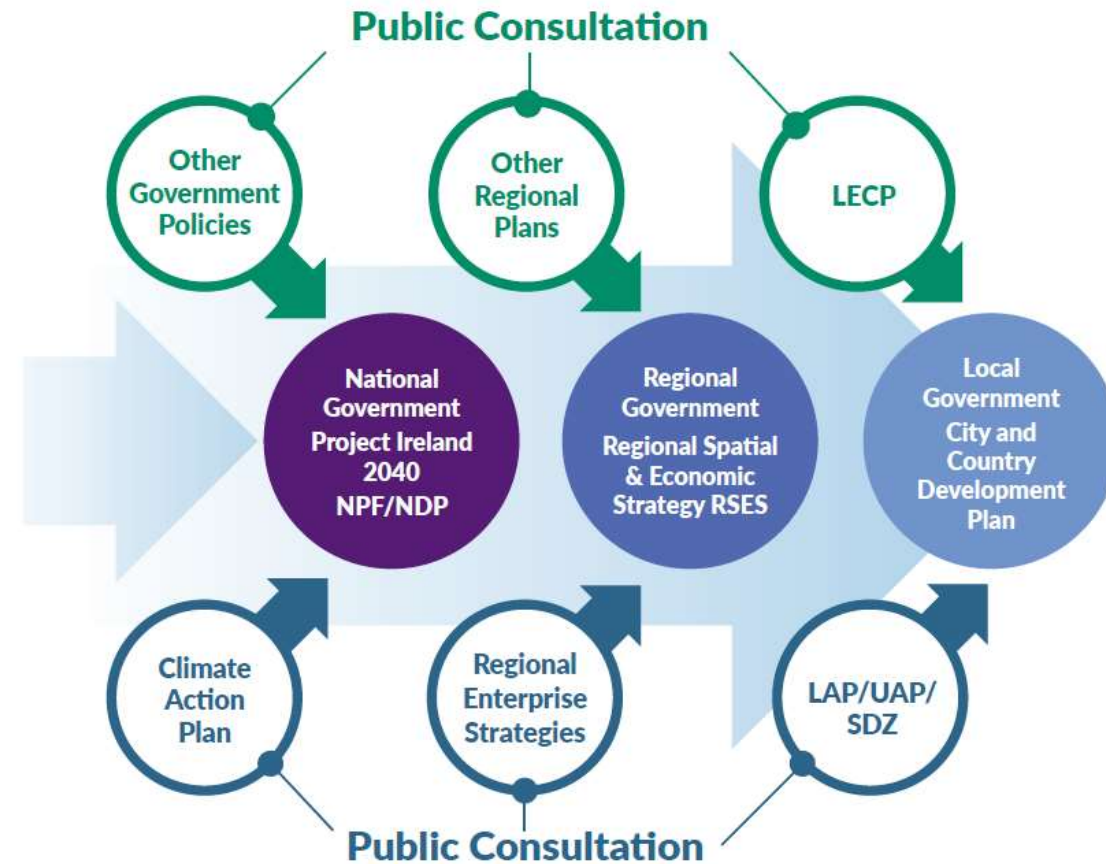
Local Economic and Community Plans Guidelines 2021



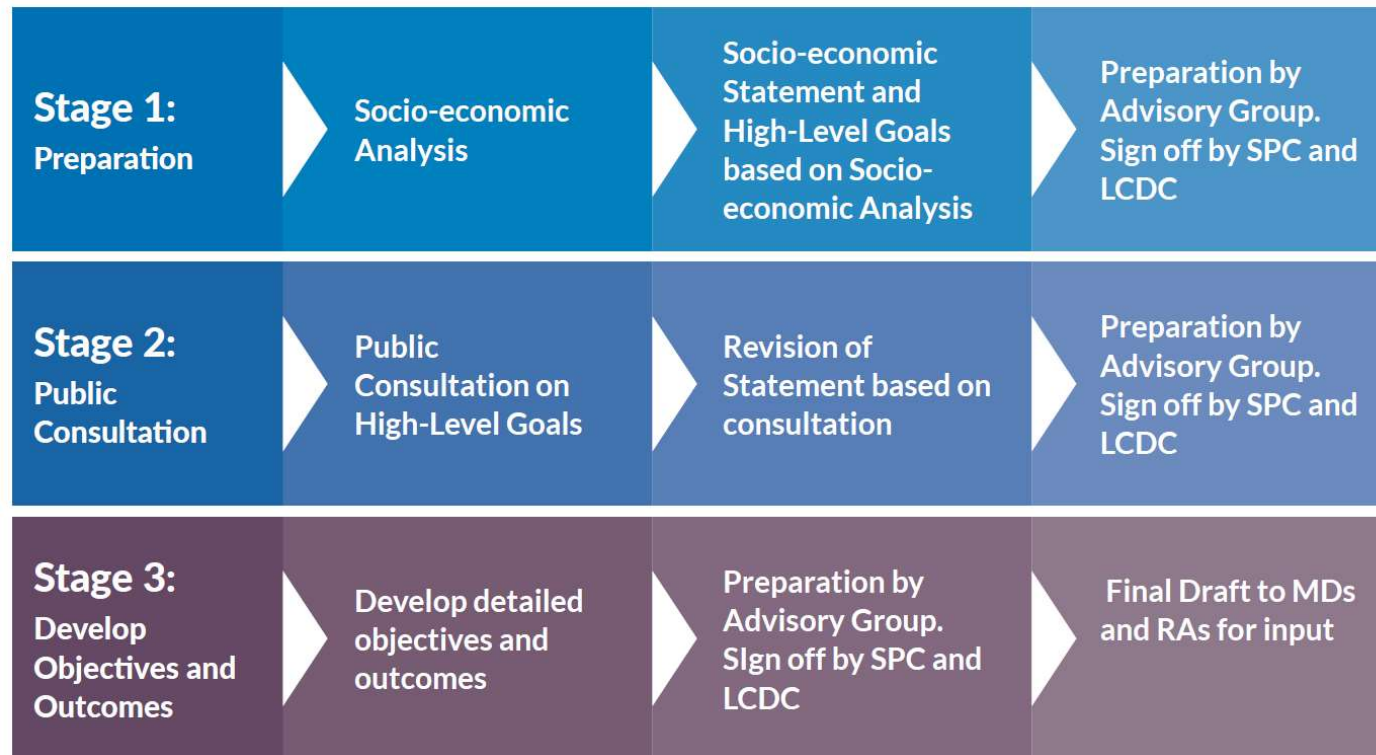
Comhairle Cathrach & Contae Phort Láirge
Waterford City & County Council

Overall Context

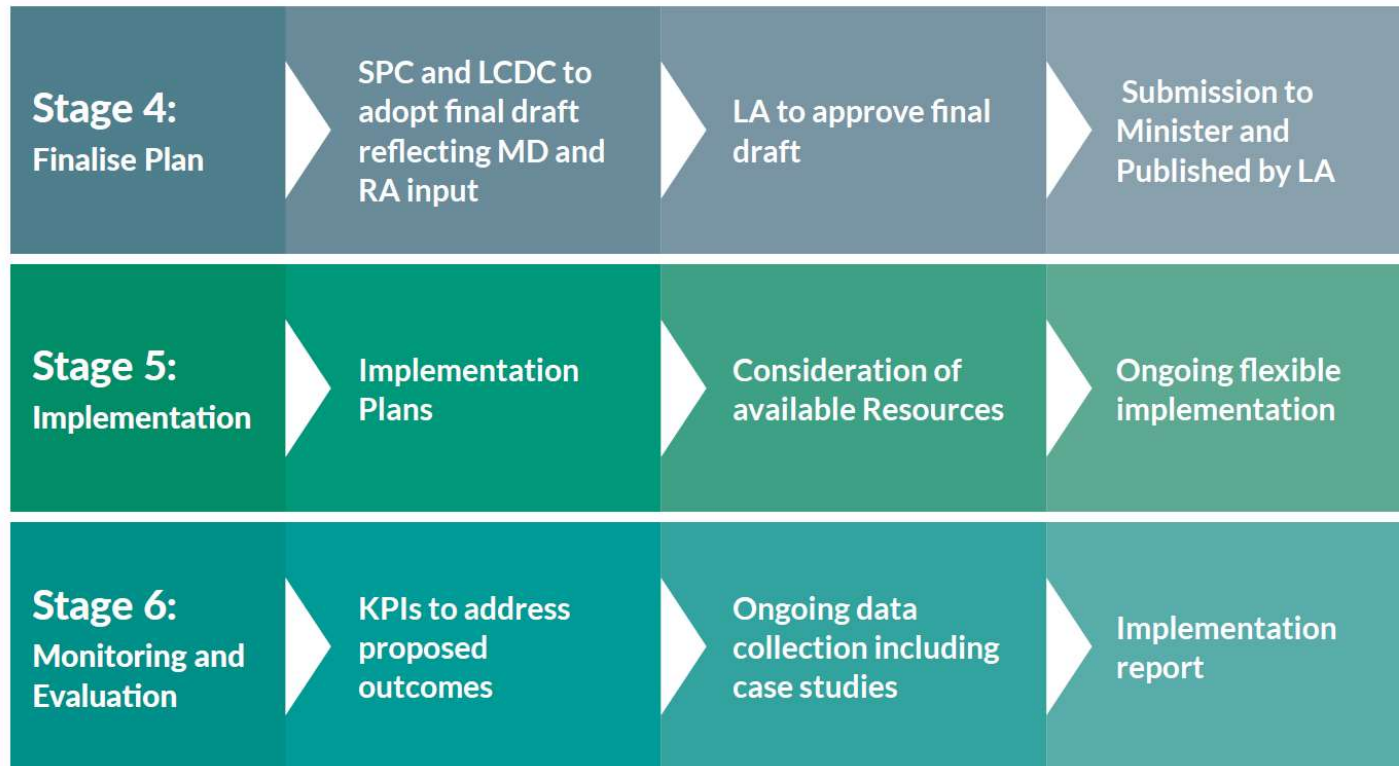
- The Local Economic and Community Plan is part of the overall process for national transformation set out in Project Ireland 2040 and which includes the National Planning Framework (NPF) and the National Development Plan (NDP).
- The LECP is a key framework through which climate action interventions can be delivered at this level.



LECP Process



LECP Process cntd.,



Economic Elements of the LECP

- The economic elements of the LECP will guide and support the economic development role of the Local Authority within the wider regional context.
- The core drivers of the economic elements will be:
- **Sustainable Economic Development Objectives (SEDOs)**. The LECP should set out a finite set of key objectives which need to be prioritised to make a significant contribution to achieving required overall economic development outcomes. The SEDOs need to be specific, measurable and have an associated timeframe and the LECP should specify relevant outcomes in respect of each objective and appropriate metrics for measuring those outcomes.
- Specific **actions** and practical measures by which the Sustainable Economic Development Objectives (SEDO)s are to be achieved, identified in conjunction with the Regional Spatial and Economic Strategy (RSES) and the Regional Enterprise Plans (REPs), and relevant economic development agencies should be set out in the LECP Implementation Plans Timeframes.



Sample Economic SEDO & Action

Policy/Planning Framework	Economic
Sustainable Development Goal (SDG)	Goal 8: Decent work and economic growth
National Development Plan (NDP)	National Strategic Outcome 5: A Strong Economy, supported by Enterprise Innovation and Skills
Regional Spatial and Economic Strategy (RSES)	Offer excellent standards of infrastructure services and property assets for all scales of enterprise, from start-ups to FDI.
LECP Framework	High-Level Goal
	Supporting improved quality employment and career opportunities in rural areas
LECP Framework	Sustainable Economic Development Objective (SEDO)
	To continue to develop encourage and create an environment for innovation, enterprise and entrepreneurship in the County.
LECP Implementation Plan	Prioritised Action
	Support the development of 2 digital hubs to facilitate remote working within the county.
LECP Implementation Plan	Lead Agency and Partners
	LEO, County Council, IDA, EI, Chambers of Commerce
LECP Implementation Plan	Key Performance Indicators
	Number of digital hubs developed
	No of people using the digital hubs
Potential Funding Sources (example)	Connected Hubs Funding, Other Enterprise related funding.



Advisory Steering Group

- The role of the Advisory Steering Group is to ensure that the preparation of the economic and community elements of the LECP are coordinated, and that duplication (both in terms of effort and engagement with stakeholders) is avoided.
- Once the LECP has been made and published, it will be the role of the Advisory Steering Group to advise and assist on its implementation and monitoring arrangements through the Implementation Plan process.

The Advisory Steering Group should include:

- At least one member of the Economic Development & Enterprise SPC
- The Director of Service supporting the Economic Development & Enterprise SPC or nominee
- At least one member of the LCDC
- The Chief Officer or nominee of the LCDC
- Subject to avoiding unwieldy size, any person that both the SPC and LCDC consider likely to make a significant contribution to the co-ordination of the economic and community elements

