

***PROPOSED TRAFFIC
MANAGEMENT SCHEME***

for

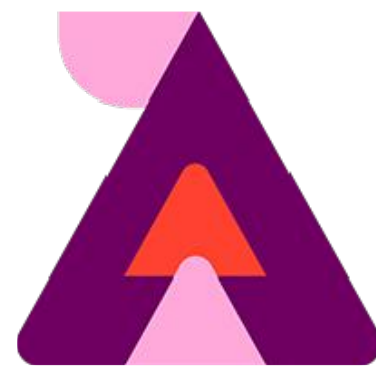
ALL TOGETHER NOW

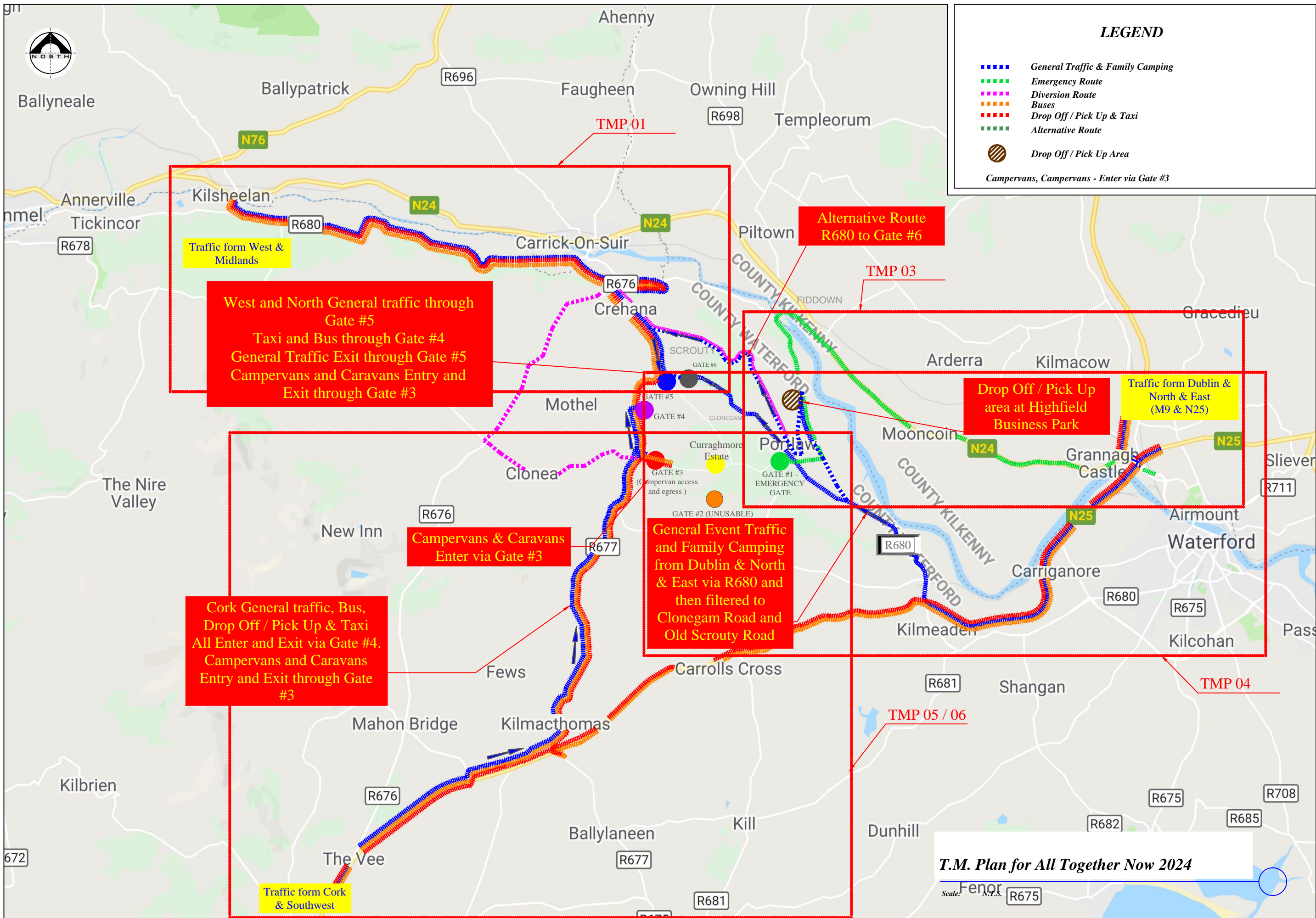
at

Curraghmore Estate, Waterford

on

1st–4th August, 2024





LEGEND

- - - - General Traffic & Family Camping
- - - - Emergency Route
- - - - Diversion Route
- - - - Buses
- - - - Drop Off / Pick Up & Taxi
- Alternative Route
- Drop Off / Pick Up Area
- Campervans, Campervans - Enter via Gate #3

West and North General traffic through Gate #5
 Taxi and Bus through Gate #4
 General Traffic Exit through Gate #5
 Campervans and Caravans Entry and Exit through Gate #3

Campervans & Caravans Enter via Gate #3

Cork General traffic, Bus, Drop Off / Pick Up & Taxi
 All Enter and Exit via Gate #4.
 Campervans and Caravans Entry and Exit through Gate #3

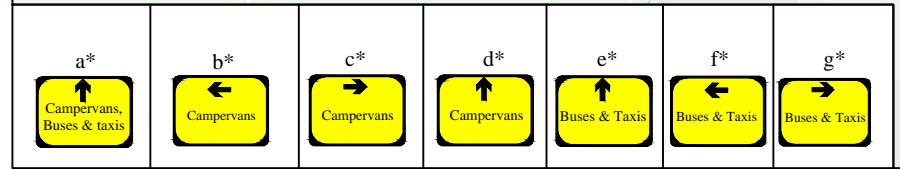
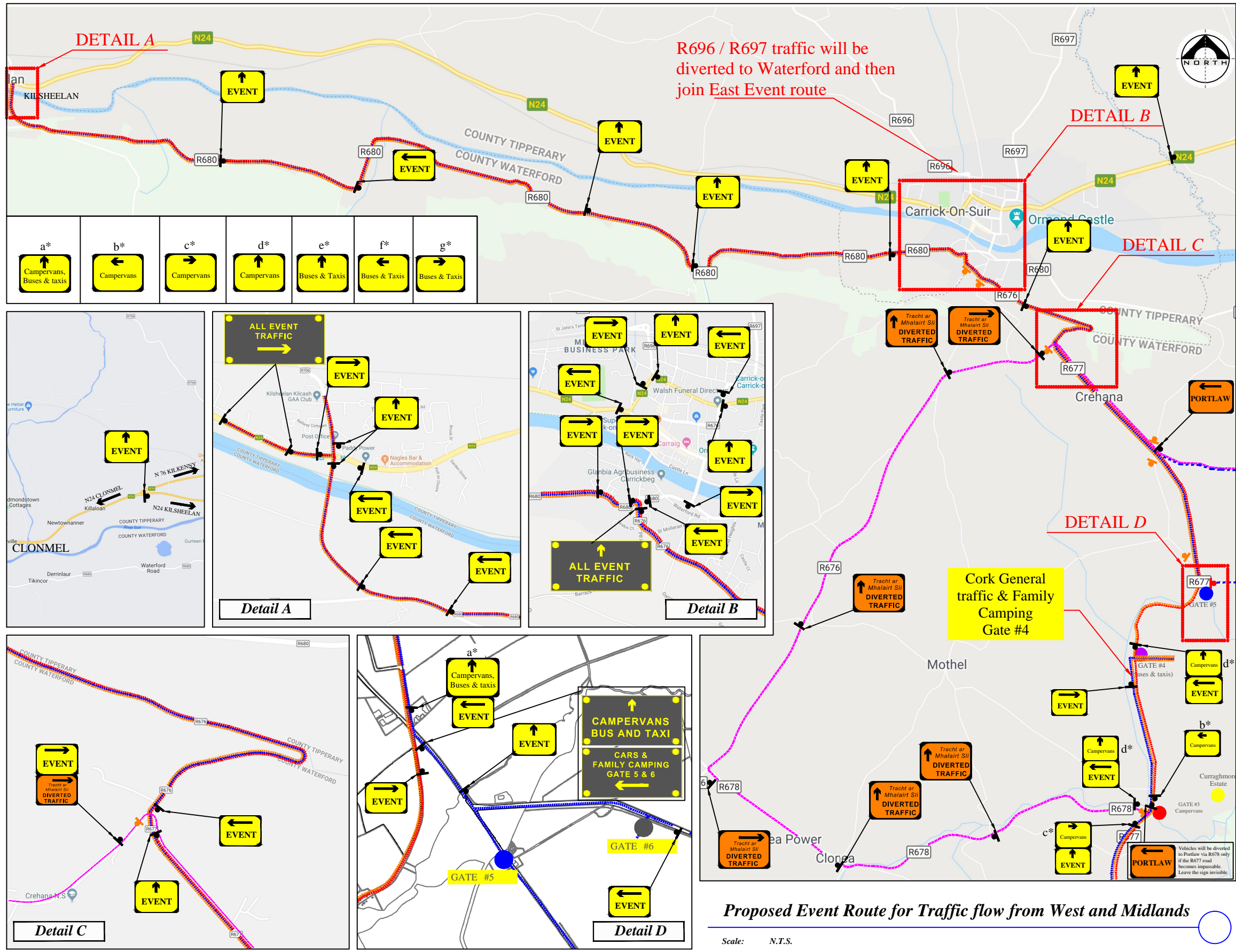
General Event Traffic and Family Camping from Dublin & North & East via R680 and then filtered to Clonegam Road and Old Scrouthy Road

Drop Off / Pick Up area at Highfield Business Park

Traffic from Dublin & North & East (M9 & N25)

Traffic from Cork & Southwest

Traffic from West & Midlands



LEGEND

- Sign Location
- General Traffic & Family Camping
- Emergency Route
- Diversion Route
- Buses
- Drop Off / Pick Up & Taxi
- VMS** Variable Message Sign

Works TTM type:	Static Type A				
	Design Type A: >12h				
Design Parameters:	LV-1 (I)	LV-1 (III)	LV-1 (IV)	LV-2 (I)	LV-2 (II)
1. Minimum Sign Size mm	450	600	600	600	750
2. Statutory Speed of the Road	30km/h	50	60	80	100
3. Distance between Advance Signs	10m	20m	20m	120m	200m
4. Number of Advance Signs	1 (<12h) 2 (>12h)	2	3 (<12h) 2 (>12h)	3 (<12h) 2 (>12h)	3 (<12h) 2 (>12h)
5. Minimum Visibility of Signs	25m	50m	60m	90m	120m
6. Longitudinal Safety Zone	0.5m	5m	15m	45m	60m
7. Lateral Safety Zone	0.5m	0.5m	0.5m	1.2m	1.2m
8. Leading Taper	1in1m	1in5m	1in10m	1in40	1in100m
9. Maximum at Tapers Cone Space	1m	3m	3m	3m	3m
10. Maximum Longitudinal Cone Space	3m	3m	6m	12m	12m
11. Lane Width (m)	2.5m	3 (2.5)	3 (2.5)	3 m	3 m
12. Two-way Roadway width (m)	5m	5m	5m	-	-

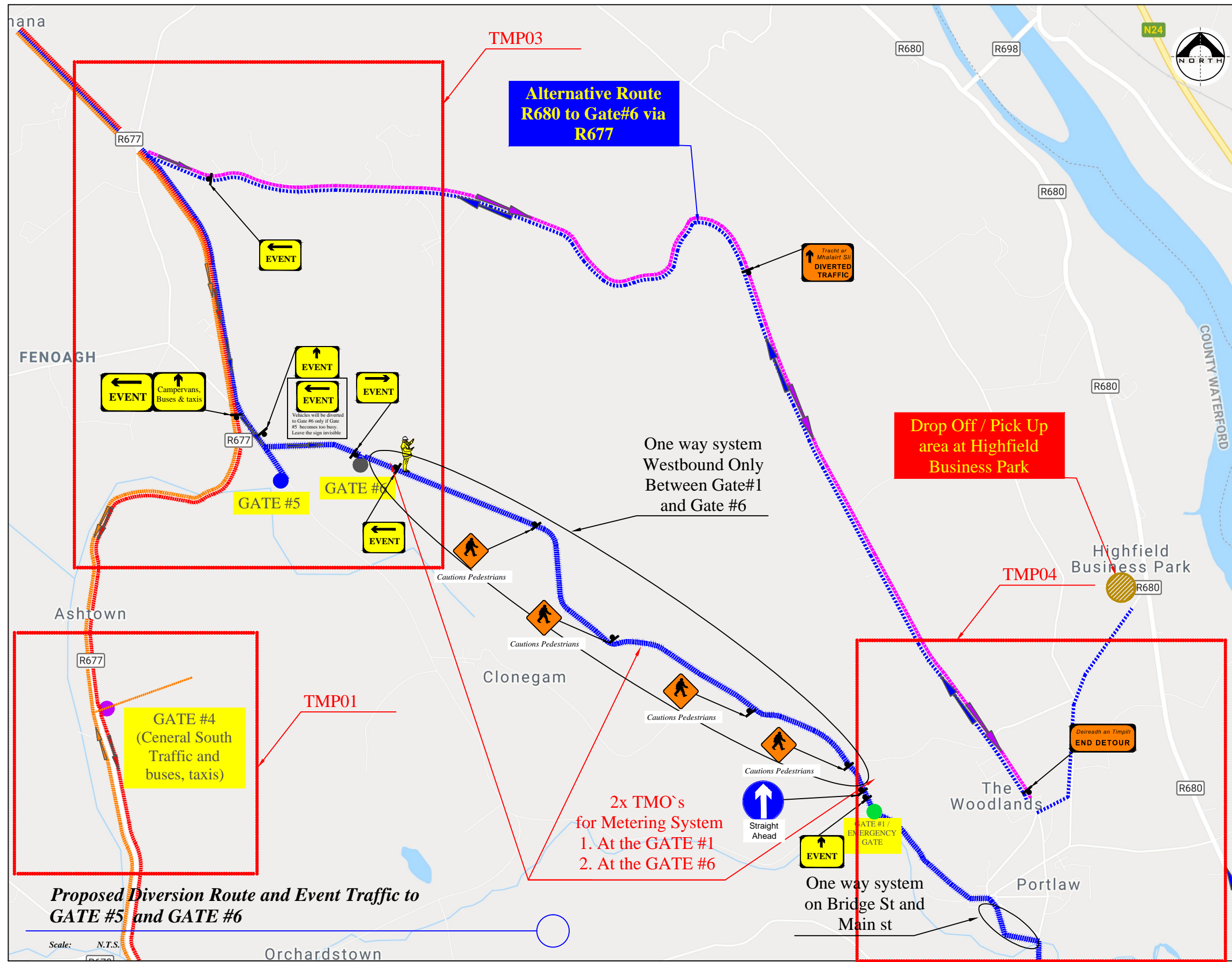
- Note:**
- All signs to comply with Chapter 8 of the "Traffic Signs Manual"-Guidance Document-2019.
 - All Traffic Management to be carried out in accordance with Chapter 8 of the "Traffic Signs Manual".
 - Detailed Risk Assessment to be carried out prior to the installation of Traffic Management System.
 - Exact sign positions to be agreed on site.
 - All affected Parties and An Garda Siochana to be notified prior to works commencing.
 - Signs to be positioned so as not to cause an obstruction to other road users.
 - All signs to be faced with retro-reflective material to class ref 2 of EN 12899.
 - "End of Roadworks" sign placed 20m to 50m from end of works area.
 - Emergency routes will be maintained.
 - Caravans & Campervans Enter via Gate #3.

Proposed Event Route for Traffic flow from West and Midlands

Scale: N.T.S.



Rev:	Description:	Date:	Job Details:	Drawing:	Dwg no:
			Proposed Traffic Management Plan for All Together Now, at Curraghmore Estate Waterford, on 1st-4th August, 2024	Proposed Event Route for Traffic flow from West and Midlands	01
			Sheet:	Drawn By: DM	Rev:
			CAD File ref.:	Date: March 2024	Scale: As Shown



LEGEND

- Sign Location
- General Traffic & Family Camping
- Emergency Route
- Diversion Route
- Buses
- Drop Off / Pick Up & Taxi
- VMS** Variable Message Sign

Works TTM type:	Static Type A				
	Design Type A: >12h				
Design Parameters:	LV-1 (I)	LV-1 (III)	LV-1 (IV)	LV-2 (I)	LV-2 (II)
1. Minimum Sign Size mm	450	600	600	600	750
2. Statutory Speed of the Road	30km/h	50	60	80	100
3. Distance between Advance Signs	10m	20m	20m	120m	200m
4. Number of Advance Signs	1 (<12h)	2	3 (<12h)	3 (<12h)	3 (<12h)
5. Minimum Visibility of Signs	25m	50m	60m	90m	120m
6. Longitudinal Safety Zone	0.5m	5m	15m	45m	60m
7. Lateral Safety Zone	0.5m	0.5m	0.5m	1.2m	1.2m
8. Leading Taper	1in1m	1in5m	1in10m	1in40	1in100m
9. Maximum at Tapers Cone Space	1m	3m	3m	3m	3m
10. Maximum Longitudinal Cone Space	3m	3m	6m	12m	12m
11. Lane Width (m)	2.5m	3 (2.5)	3 (2.5)	3 m	3 m
12. Two-way Roadway width (m)	5m	5m	5m	-	-

- Note:**
- All signs to comply with Chapter 8 of the "Traffic Signs Manual"-Guidance Document-2019.
 - All Traffic Management to be carried out in accordance with Chapter 8 of the "Traffic Signs Manual".
 - Detailed Risk Assessment to be carried out prior to the installation of Traffic Management System.
 - Exact sign positions to be agreed on site.
 - All affected Parties and An Garda Siochana to be notified prior to works commencing.
 - Signs to be positioned so as not to cause an obstruction to other road users.
 - All signs to be faced with retro-reflective material to class ref 2 of EN 12899.
 - "End of Roadworks" sign placed 20m to 50m from end of works area.
 - Emergency routes will be maintained.
 - Caravans & Campervans Enter via Gate #3.



Rev:	Description:	Date:	Job Details:	Drawing:	Dwg no:
			Proposed Traffic Management Plan for All Together Now, at Curraghmore Estate Waterford, on 1st-4th August, 2024	Proposed Diversion Route & Event Traffic to GATE #5 and GATE #6	02
			Sheet:	Drawn By:	Rev:
			CAD File ref.:	DM	
				Date:	Scale:
				March 2024	As Shown



LEGEND

- Sign Location
- General Traffic & Family Camping
- Emergency Route
- Diversion Route
- Buses
- Drop Off / Pick Up & Taxi
- Road Closed
- Event Sign
- NO EVENT TRAFFIC
- VMS Variable Message Sign

Works TTM type:	Static Type A				
	Design Type A: >12h				
Design Parameters:	LV-1 (I)	LV-1 (III)	LV-1 (IV)	LV-2 (I)	LV-2 (II)
1. Minimum Sign Size mm	450	600	600	600	750
2. Statutory Speed of the Road	30km/h	50	60	80	100
3. Distance between Advance Signs	10m	20m	20m	120m	200m
4. Number of Advance Signs	1 (<12h) 2 (>12h)	2	3 (<12h) 2 (>12h)	3 (<12h) 4 (>12h)	3 (<12h) 4 (>12h)
5. Minimum Visibility of Signs	25m	50m	60m	90m	120m
6. Longitudinal Safety Zone	0.5m	5m	15m	45m	60m
7. Lateral Safety Zone	0.5m	0.5m	0.5m	1.2m	1.2m
8. Leading Taper	1in1m	1in5m	1in10m	1in40	1in100m
9. Maximum at Tapers Cone Space	1m	3m	3m	3m	3m
10. Maximum Longitudinal Cone Space	3m	3m	6m	12m	12m
11. Lane Width (m)	2.5m	3 (2.5)	3 (2.5)	3 m	3 m
12. Two-way Roadway width (m)	5m	5m	5m	-	-

- Note:**
- All signs to comply with Chapter 8 of the "Traffic Signs Manual"-Guidance Document-2019.
 - All Traffic Management to be carried out in accordance with Chapter 8 of the "Traffic Signs Manual".
 - Detailed Risk Assessment to be carried out prior to the installation of Traffic Management System.
 - Exact sign positions to be agreed on site.
 - All affected Parties and An Garda Siochana to be notified prior to works commencing.
 - Signs to be positioned so as not to cause an obstruction to other road users.
 - All signs to be faced with retro-reflective material to class ref 2 of EN 12899.
 - "End of Roadworks" sign placed 20m to 50m from end of works area.
 - Emergency routes will be maintained.
 - Caravans & Campervans Enter via Gate #3.

Proposed Diversion Route and Event Traffic to GATE #5 and GATE #6

Scale: N.T.S.



Rev:	Description:	Date:

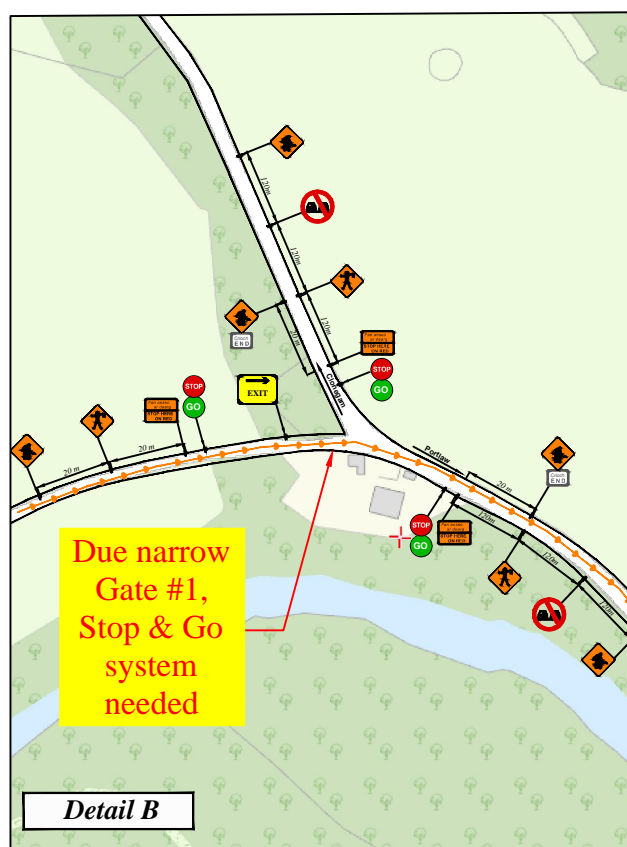
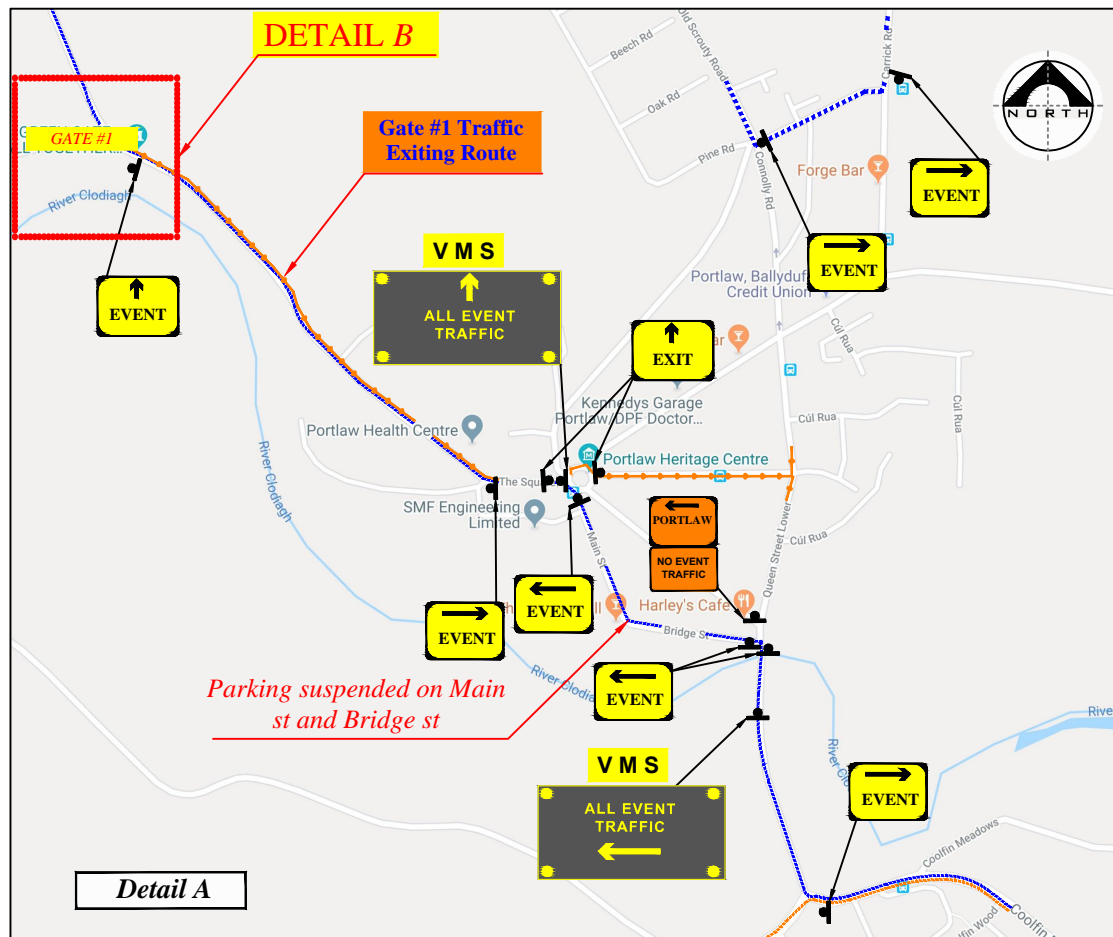
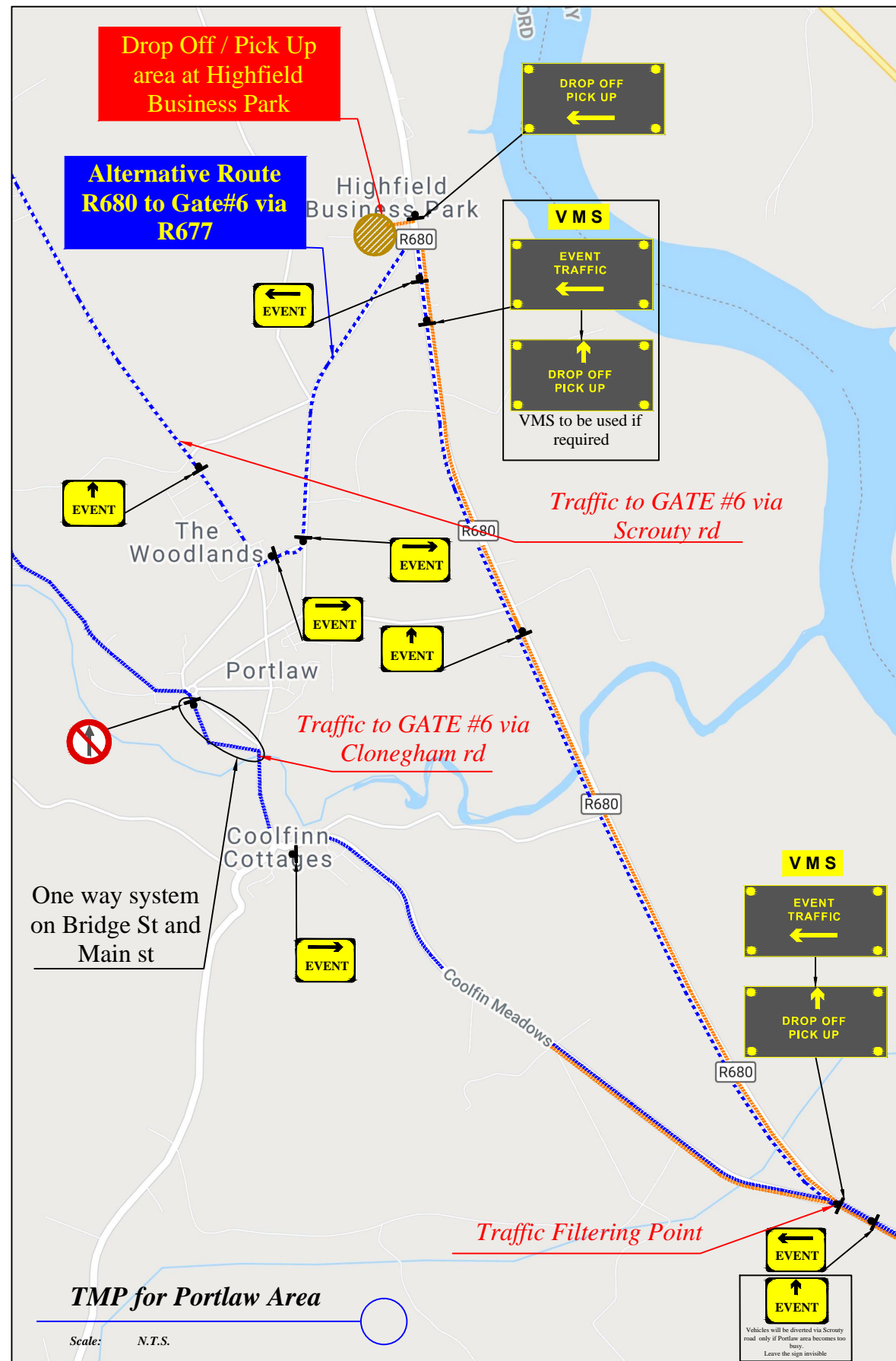
Job Details:
 Proposed Traffic Management Plan for All Together Now, at Curraghmore Estate Waterford, on 1st-4th August, 2024

Sheet: CAD File ref.:

Drawing:
 TMP for Scourty rd and R677 rd Junction

Drawn By: DM Date: March 2024

Dwg no: 03
 Rev: Scale: As Shown



LEGEND

- Sign Location
- General Traffic & Family Camping
- Emergency Route
- Diversion Route
- Buses
- Drop Off / Pick Up & Taxi
- VMS** Variable Message Sign

Works TTM type:	Static Type A				
	Design Type A: >12h				
Design Parameters:	LV-1 (I)	LV-1 (III)	LV-1 (IV)	LV-2 (I)	LV-2 (II)
	1. Minimum Sign Size mm	450	600	600	600
2. Statutory Speed of the Road	30km/h	50	60	80	100
3. Distance between Advance Signs	10m	20m	20m	120m	200m
4. Number of Advance Signs	1 (<12h) 2 (>12h)	2	3 (<12h) 2 (>12h)	3 (<12h) 2 (>12h)	3 (<12h) 2 (>12h)
5. Minimum Visibility of Signs	25m	50m	60m	90m	120m
6. Longitudinal Safety Zone	0.5m	5m	15m	45m	60m
7. Lateral Safety Zone	0.5m	0.5m	0.5m	1.2m	1.2m
8. Leading Taper	1in1m	1in5m	1in10m	1in40	1in100
9. Maximum at Tapers Cone Space	1m	3m	3m	3m	3m
10. Maximum Longitudinal Cone Space	3m	3m	6m	12m	12m
11. Lane Width (m)	2.5m	3 (2.5)	3 (2.5)	3 m	3 m
12. Two-way Roadway width (m)	5m	5m	5m	-	-

- Note:**
- All signs to comply with Chapter 8 of the "Traffic Signs Manual"-Guidance Document-2019.
 - All Traffic Management to be carried out in accordance with Chapter 8 of the "Traffic Signs Manual".
 - Detailed Risk Assessment to be carried out prior to the installation of Traffic Management System.
 - Exact sign positions to be agreed on site.
 - All affected Parties and An Garda Siochana to be notified prior to works commencing.
 - Signs to be positioned so as not to cause an obstruction to other road users.
 - All signs to be faced with retro-reflective material to class ref 2 of EN 12899.
 - "End of Roadworks" sign placed 20m to 50m from end of works area.
 - Emergency routes will be maintained.
 - Caravans & Campervans Enter via Gate #3.



Rev:	Description:	Date:

Job Details:
Proposed Traffic Management Plan for All Together Now, at Curraghmore Estate Waterford, on 1st-4th August, 2024

Sheet: **CAD File ref.:**

Drawing:
TMP for Portlaw Area

Drawn By: DM **Date:** March 2024

Dwg no: 04 **Rev:** **Scale:** As Shown



LEGEND

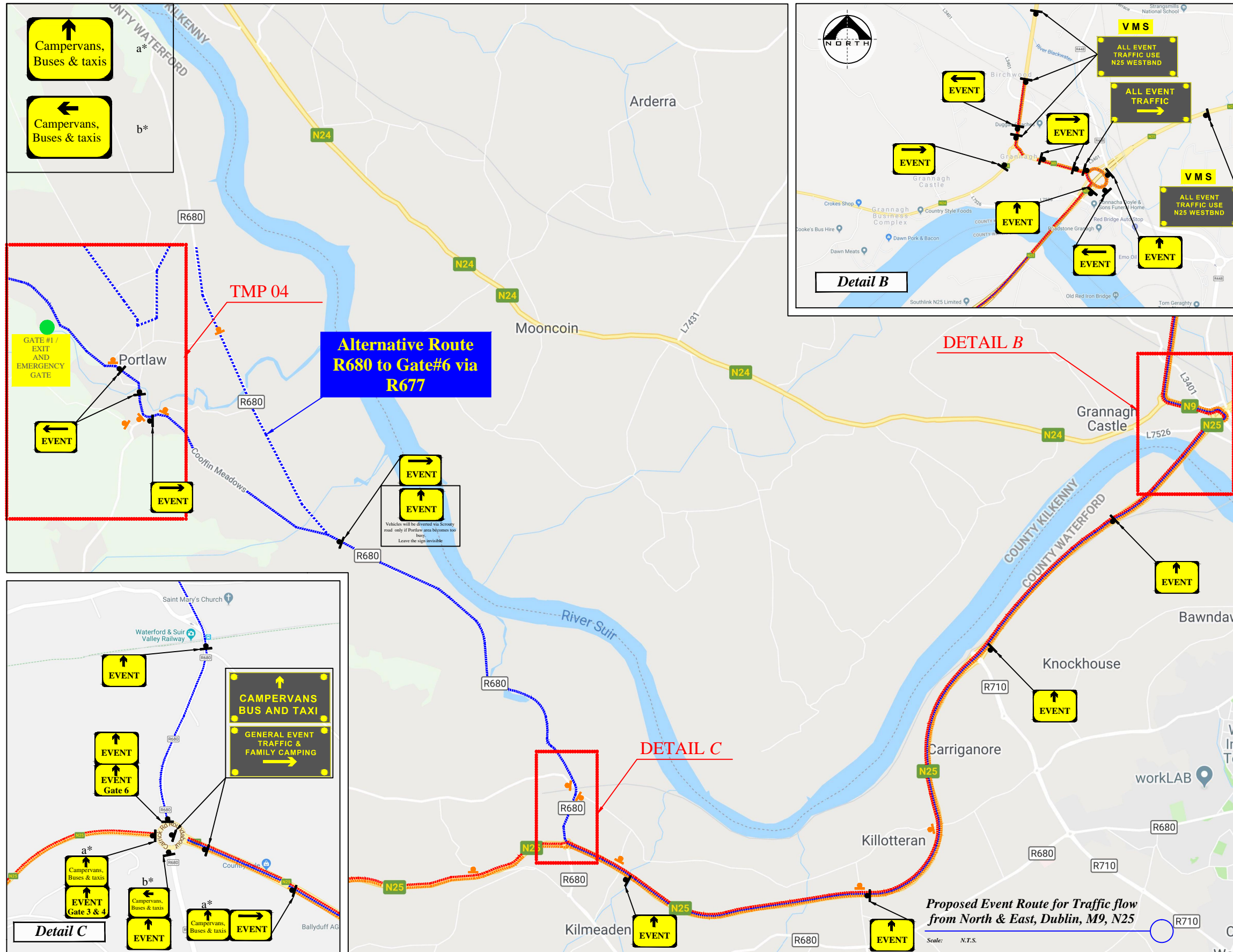
- Sign Location
- General Traffic & Family Camping
- Emergency Route
- Diversion Route
- Buses
- Drop Off / Pick Up & Taxi
- Road Closure
- Change for Access
- No Event Traffic
- VMS Variable Message Sign

Works TTM type:	Static Type A				
	Design Type A: >12h				
Design Parameters:	LV-1 (I)	LV-1 (III)	LV-1 (IV)	LV-2 (I)	LV-2 (II)
1. Minimum Sign Size mm	450	600	600	600	750
2. Statutory Speed of the Road	30km/h	50	60	80	100
3. Distance between Advance Signs	10m	20m	20m	120m	200m
4. Number of Advance Signs	1 (<12h) 2 (>12h)	2	3 (<12h) 2 (>12h)	3 (<12h) 4 (>12h)	3 (<12h) 4 (>12h)
5. Minimum Visibility of Signs	25m	50m	60m	90m	120m
6. Longitudinal Safety Zone	0.5m	5m	15m	45m	60m
7. Lateral Safety Zone	0.5m	0.5m	0.5m	1.2m	1.2m
8. Leading Taper	1in1m	1in5m	1in10m	1in40	1in100m
9. Maximum at Tapers Cone Space	1m	3m	3m	3m	3m
10. Maximum Longitudinal Cone Space	3m	3m	6m	12m	12m
11. Lane Width (m)	2.5m	3 (2.5)	3 (2.5)	3 m	3 m
12. Two-way Roadway width (m)	5m	5m	5m	-	-

- Note:**
- All signs to comply with Chapter 8 of the "Traffic Signs Manual"-Guidance Document-2019.
 - All Traffic Management to be carried out in accordance with Chapter 8 of the "Traffic Signs Manual".
 - Detailed Risk Assessment to be carried out prior to the installation of Traffic Management System.
 - Exact sign positions to be agreed on site.
 - All affected Parties and An Garda Siochana to be notified prior to works commencing.
 - Signs to be positioned so as not to cause an obstruction to other road users.
 - All signs to be faced with retro-reflective material to class ref 2 of EN 12899.
 - "End of Roadworks" sign placed 20m to 50m from end of works area.
 - Emergency routes will be maintained.
 - N24 traffic will be directed from Carrick on Suir to Waterford and then join East Event route



Rev:	Description:	Date:	Job Details:	Drawing:	Dwg no:
			Proposed Traffic Management Plan for All Together Now, at Curraghmore Estate Waterford, on 1st-4th August, 2024	Proposed Emergency Route	05
			Sheet:	Drawn By: DM	Rev:
			CAD File ref.:	Date: March 2024	Scale: As Shown



LEGEND

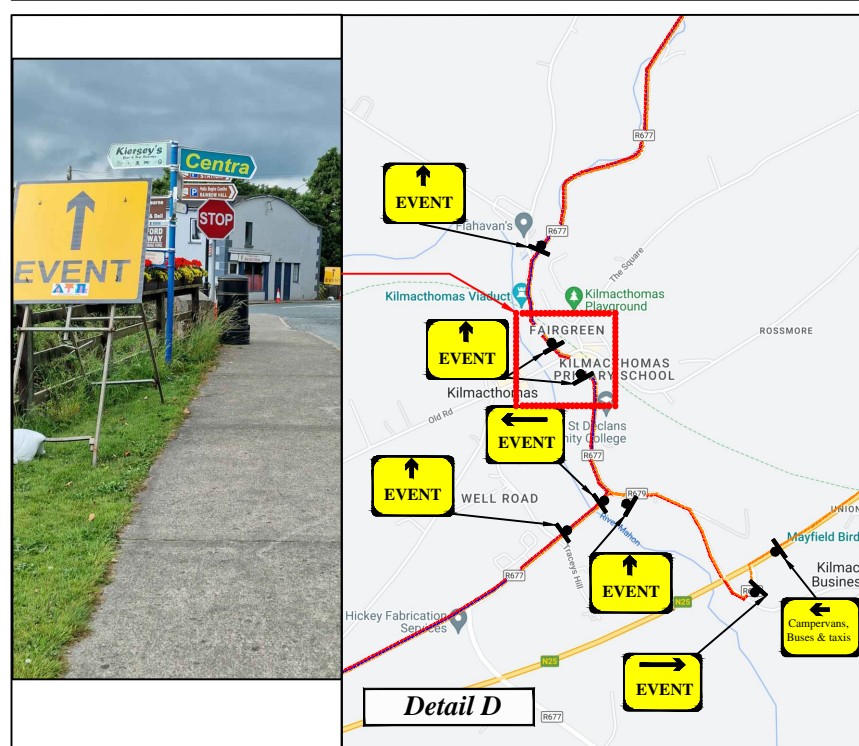
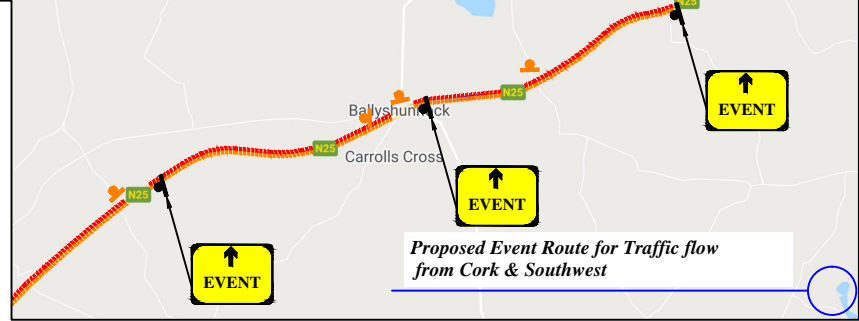
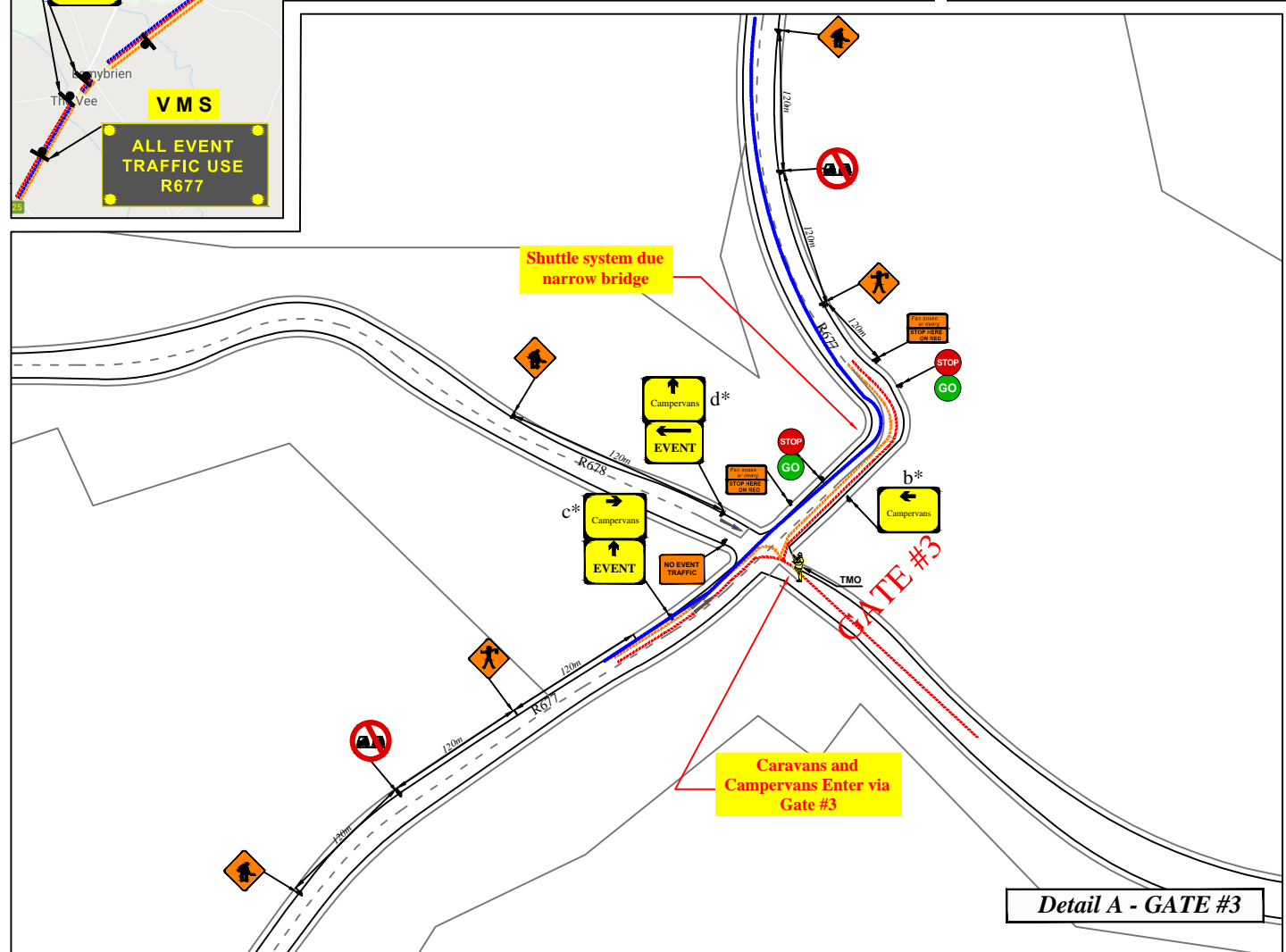
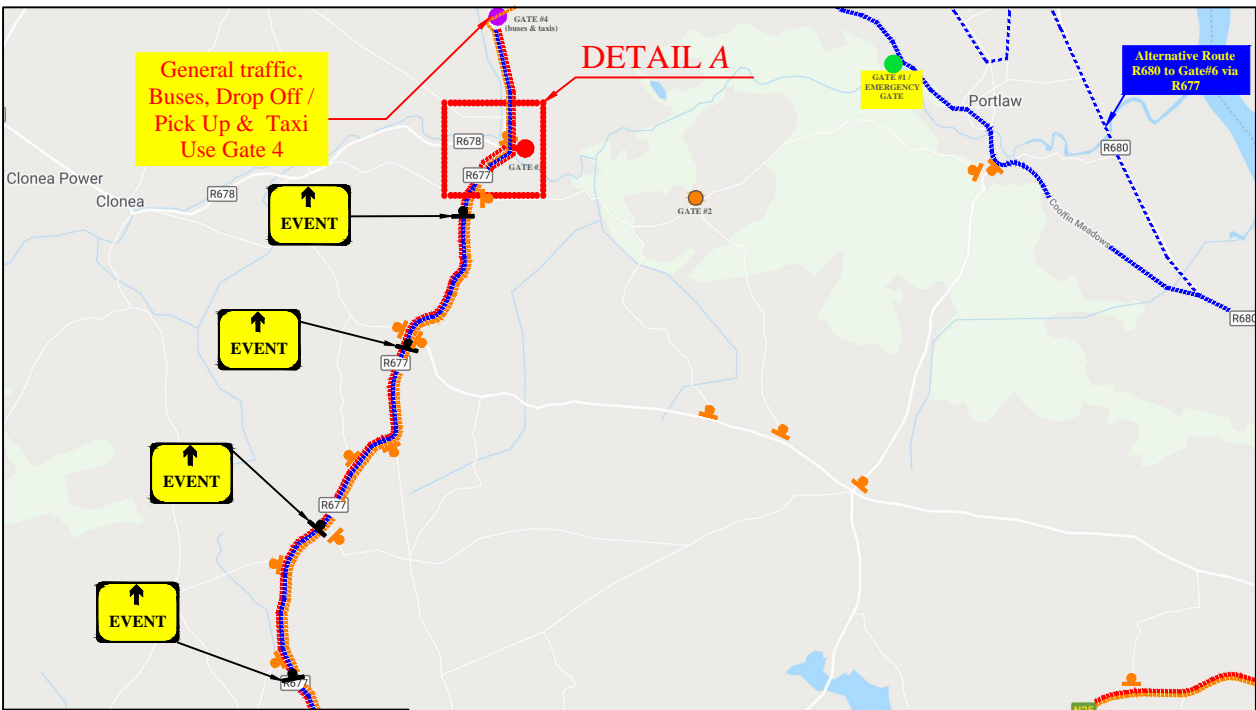
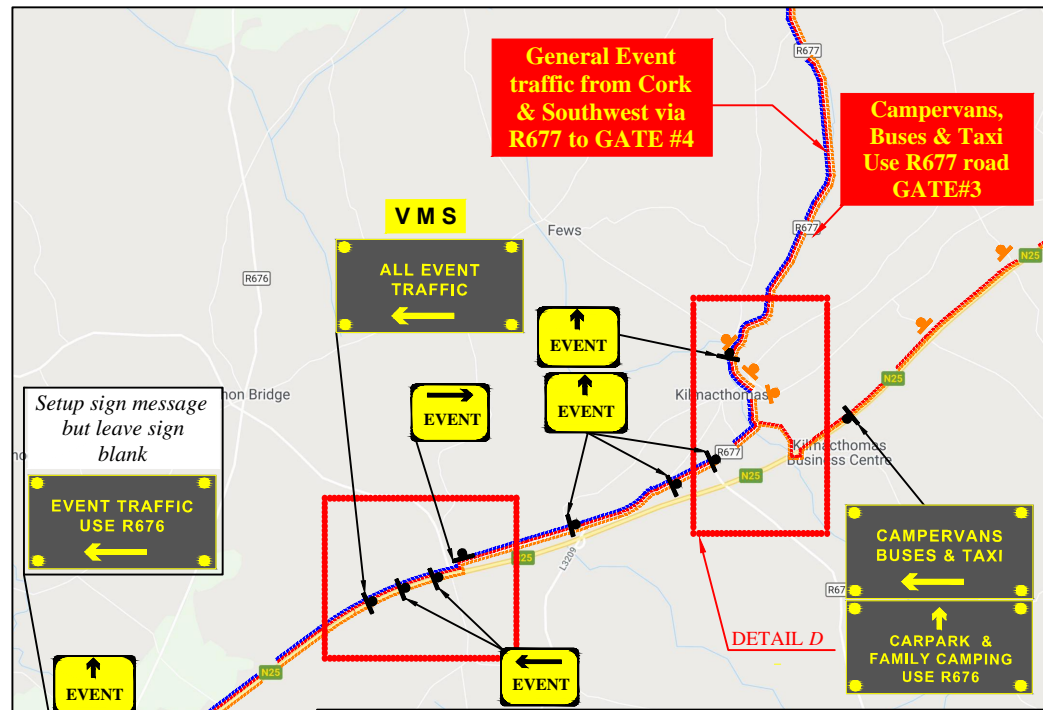
- Sign Location
- General Traffic & Family Camping
- Emergency Route
- Diversion Route
- Buses
- Drop Off / Pick Up & Taxi
- Road Closure, Change for Access, No Event Traffic
- Variable Message Sign

Works TTM type:	Static Type A				
	Design Type A: >12h				
Design Parameters:	LV-1 (I)	LV-1 (III)	LV-1 (IV)	LV-2 (I)	LV-2 (II)
1. Minimum Sign Size mm	450	600	600	600	750
2. Statutory Speed of the Road	30km/h	50	60	80	100
3. Distance between Advance Signs	10m	20m	20m	120m	200m
4. Number of Advance Signs	1 (<12h) 2 (>12h)	2	3 (<12h) 2 (>12h)	3 (<12h) 4 (>12h)	3 (<12h) 4 (>12h)
5. Minimum Visibility of Signs	25m	50m	60m	90m	120m
6. Longitudinal Safety Zone	0.5m	5m	15m	45m	60m
7. Lateral Safety Zone	0.5m	0.5m	0.5m	1.2m	1.2m
8. Leading Taper	1in1m	1in5m	1in10m	1in40	1in100m
9. Maximum at Tapers Cone Space	1m	3m	3m	3m	3m
10. Maximum Longitudinal Cone Space	3m	3m	6m	12m	12m
11. Lane Width (m)	2.5m	3 (2.5)	3 (2.5)	3 m	3 m
12. Two-way Roadway width (m)	5m	5m	5m	-	-

- Note:**
- All signs to comply with Chapter 8 of the "Traffic Signs Manual"-Guidance Document-2019.
 - All Traffic Management to be carried out in accordance with Chapter 8 of the "Traffic Signs Manual".
 - Detailed Risk Assessment to be carried out prior to the installation of Traffic Management System.
 - Exact sign positions to be agreed on site.
 - All affected Parties and An Garda Siochana to be notified prior to works commencing.
 - Signs to be positioned so as not to cause an obstruction to other road users.
 - All signs to be faced with retro-reflective material to class ref 2 of EN 12899.
 - "End of Roadworks" sign placed 20m to 50m from end of works area.
 - Emergency routes will be maintained.
 - Caravans & Campervans Enter via Gate #3.



Rev:	Description:	Date:	Job Details:	Drawing:	Dwg no:
			Proposed Traffic Management Plan for All Together Now, at Curraghmore Estate Waterford, on 1st-4th August, 2024	Proposed Event Route for Traffic flow from North & East, Dublin, M9, N25	06
			Sheet:	Drawn By: DM	Rev:
			CAD File ref.:	Date: March 2024	Scale: As Shown

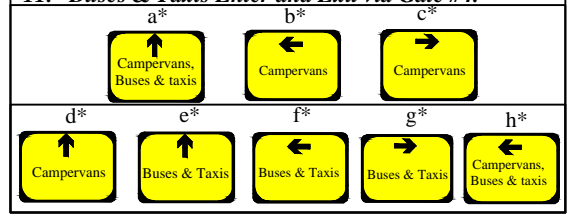


LEGEND

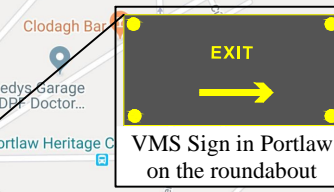
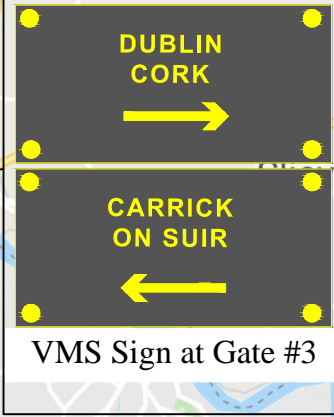
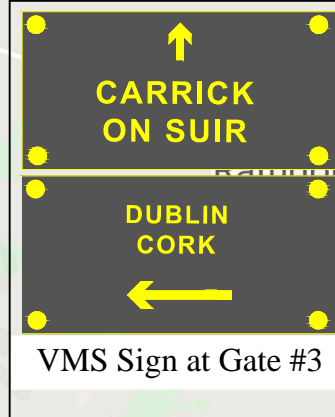
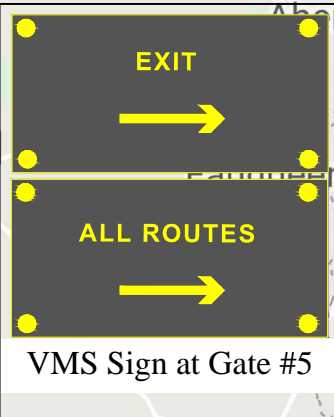
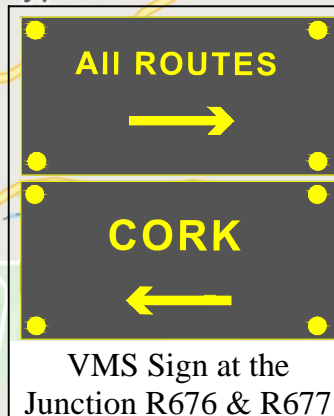
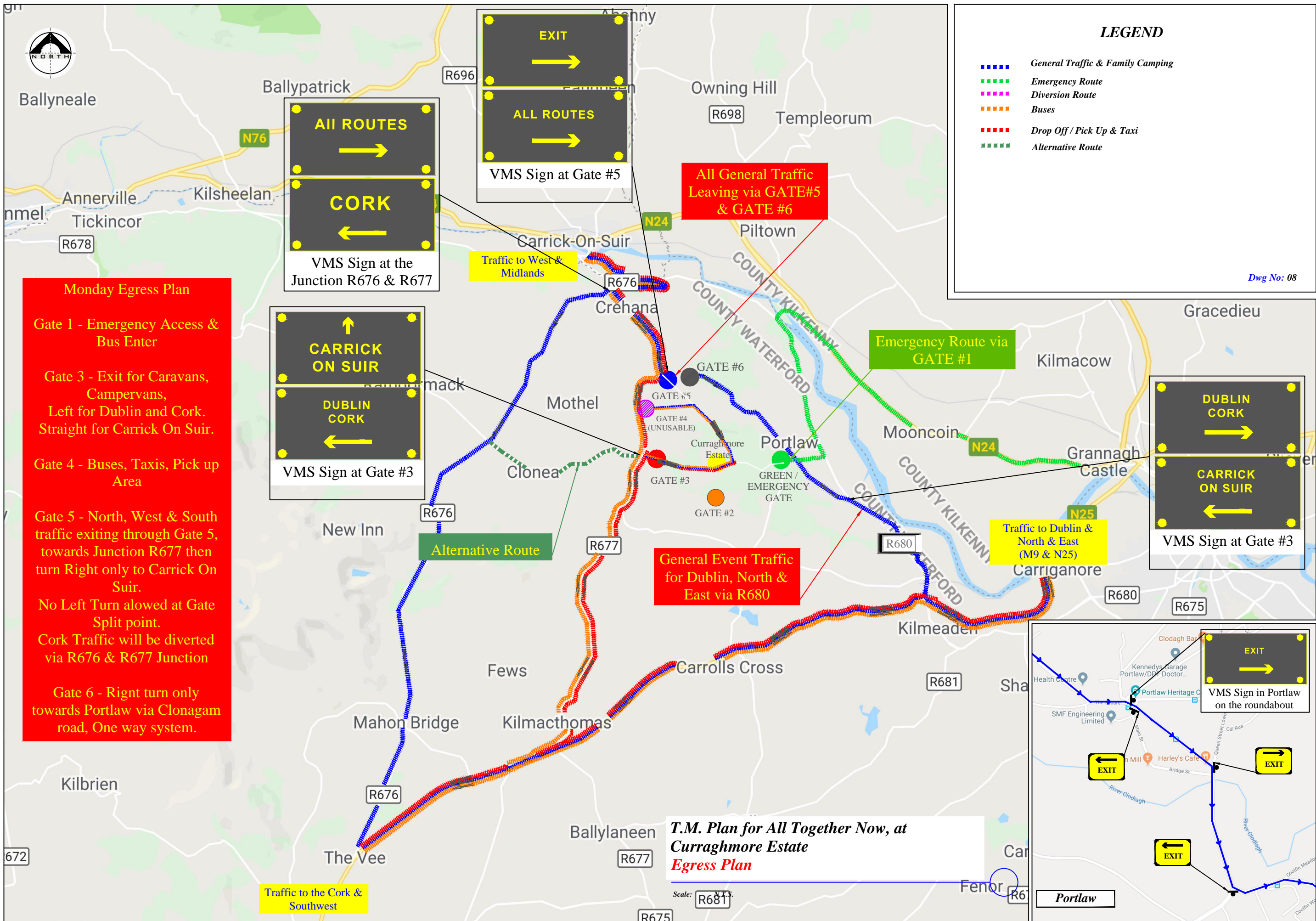
- Sign Location
- General Traffic & Family Camping
- Emergency Route
- Diversion Route
- Buses
- Drop Off / Pick Up & Taxi
- Variable Message Sign (VMS)

Works TTM type:	Static Type A				
	Design Type A: >12h				
Design Parameters:	LV-1 (I)	LV-1 (III)	LV-1 (IV)	LV-2 (I)	LV-2 (II)
1. Minimum Sign Size mm	450	600	600	600	750
2. Statutory Speed of the Road	30km/h	50	60	80	100
3. Distance between Advance Signs	10m	20m	20m	120m	200m
4. Number of Advance Signs	1 (<12h) 2 (>12h)	2	3 (<12h) 2 (>12h)	3 (<12h) 4 (>12h)	3 (<12h) 4 (>12h)
5. Minimum Visibility of Signs	25m	50m	60m	90m	120m
6. Longitudinal Safety Zone	0.5m	5m	15m	45m	60m
7. Lateral Safety Zone	0.5m	0.5m	0.5m	1.2m	1.2m
8. Leading Taper	1in1m	1in5m	1in10m	1in40	1in100m
9. Maximum at Tapers Cone Space	1m	3m	3m	3m	3m
10. Maximum Longitudinal Cone Space	3m	3m	6m	12m	12m
11. Lane Width (m)	2.5m	3 (2.5)	3 (2.5)	3 m	3 m
12. Two-way Roadway width (m)	5m	5m	5m	-	-

- Note:**
- All signs to comply with Chapter 8 of the "Traffic Signs Manual"-Guidance Document-2019.
 - All Traffic Management to be carried out in accordance with Chapter 8 of the "Traffic Signs Manual".
 - Detailed Risk Assessment to be carried out prior to the installation of Traffic Management System.
 - Exact sign positions to be agreed on site.
 - All affected Parties and An Garda Siochana to be notified prior to works commencing.
 - Signs to be positioned so as not to cause an obstruction to other road users.
 - All signs to be faced with retro-reflective material to class ref 2 of EN 12899.
 - "End of Roadworks" sign placed 20m to 50m from end of works area.
 - Emergency routes will be maintained.
 - Caravans & Campervans Enter via Gate #3.
 - Buses & Taxis Enter and Exit via Gate #4.



Rev:	Description:	Date:	Job Details:	Drawing:	Dwg no:
			Proposed Traffic Management Plan for All Together Now, at Curraghmore Estate Waterford, on 1st-4th August, 2024	Proposed Event Route for Traffic flow from Cork & Southwest	07
			Sheet:	Drawn By:	Rev:
			CAD File ref.:	DM	
				Date:	Scale:
				March 2024	As Shown



Monday Egress Plan

Gate 1 - Emergency Access & Bus Enter

Gate 3 - Exit for Caravans, Campervans, Left for Dublin and Cork. Straight for Carrick On Suir.

Gate 4 - Buses, Taxis, Pick up Area

Gate 5 - North, West & South traffic exiting through Gate 5, towards Junction R677 then turn Right only to Carrick On Suir. No Left Turn allowed at Gate Split point. Cork Traffic will be diverted via R676 & R677 Junction

Gate 6 - Right turn only towards Portlaw via Clonagam road, One way system.

All General Traffic Leaving via GATE#5 & GATE #6

General Event Traffic for Dublin, North & East via R680

Emergency Route via GATE #1

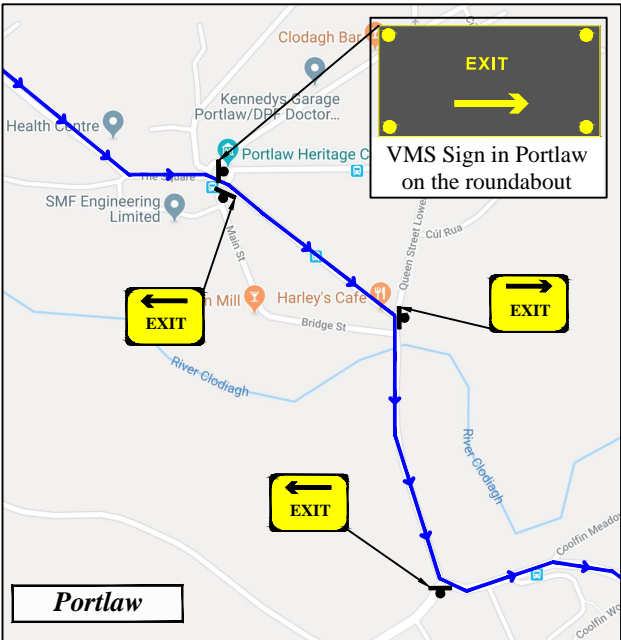
Alternative Route

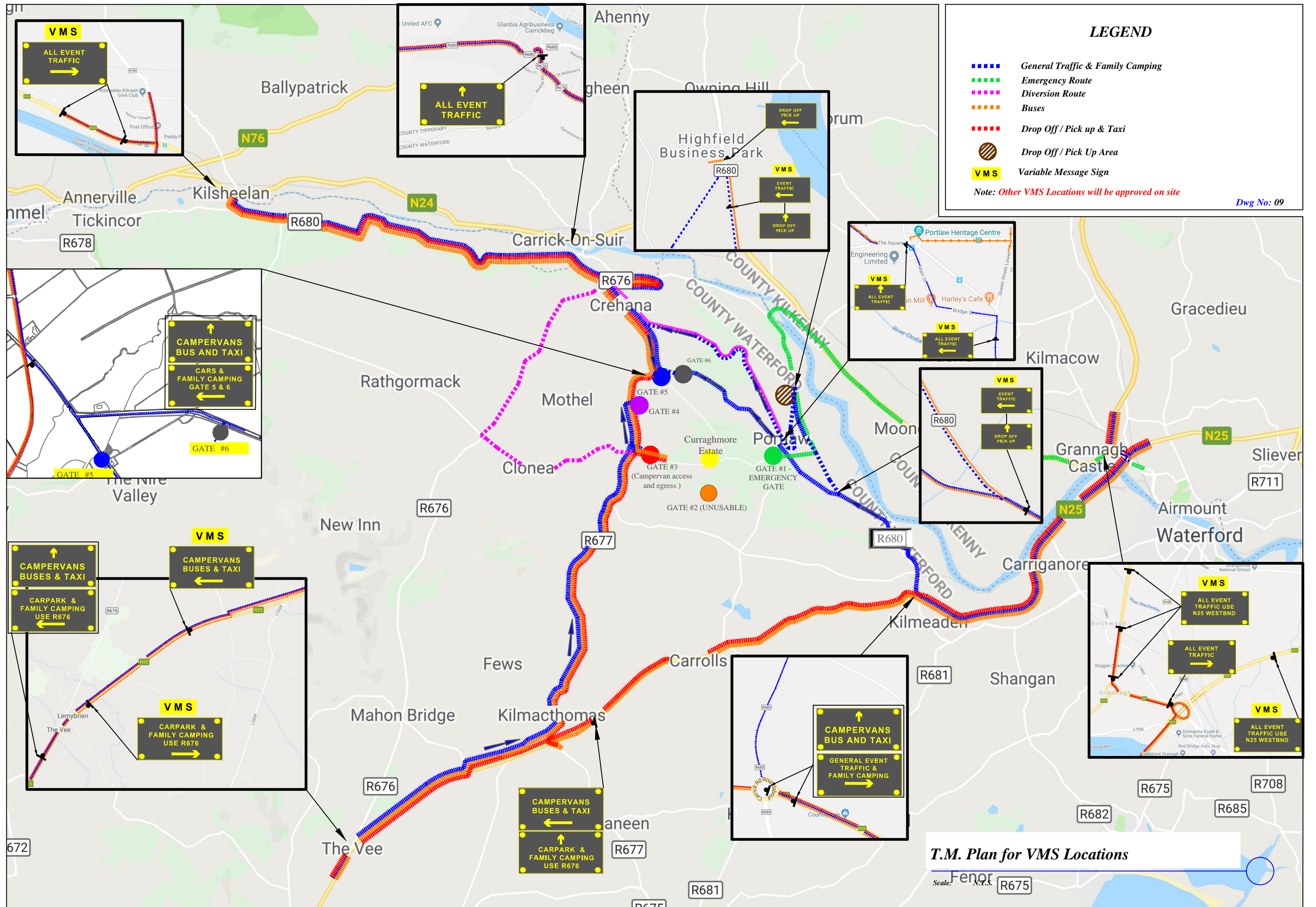
Traffic to Dublin & North & East (M9 & N25)

Traffic to West & Midlands

Traffic to the Cork & Southwest

Scale: 1:10,000





LEGEND

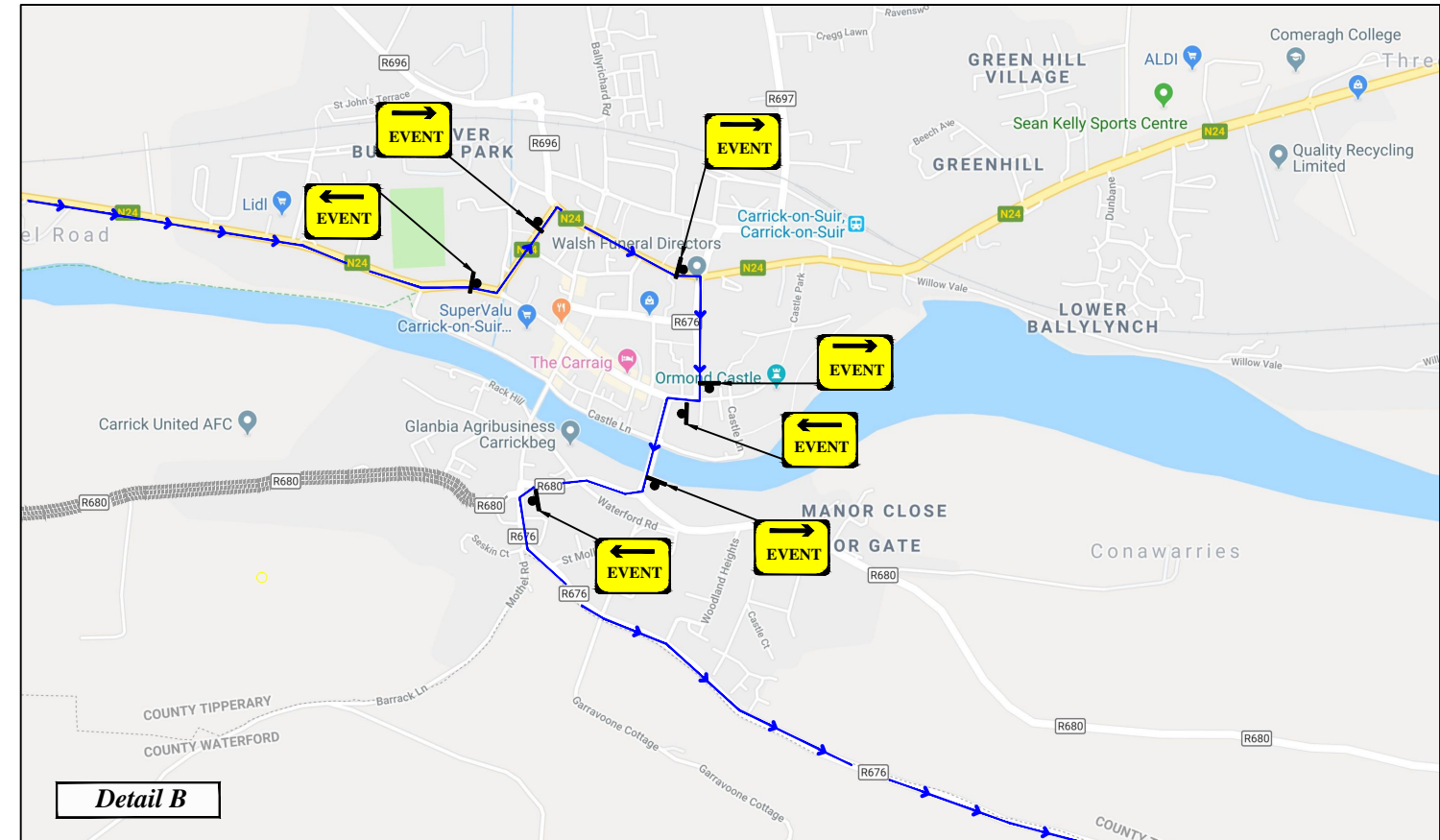
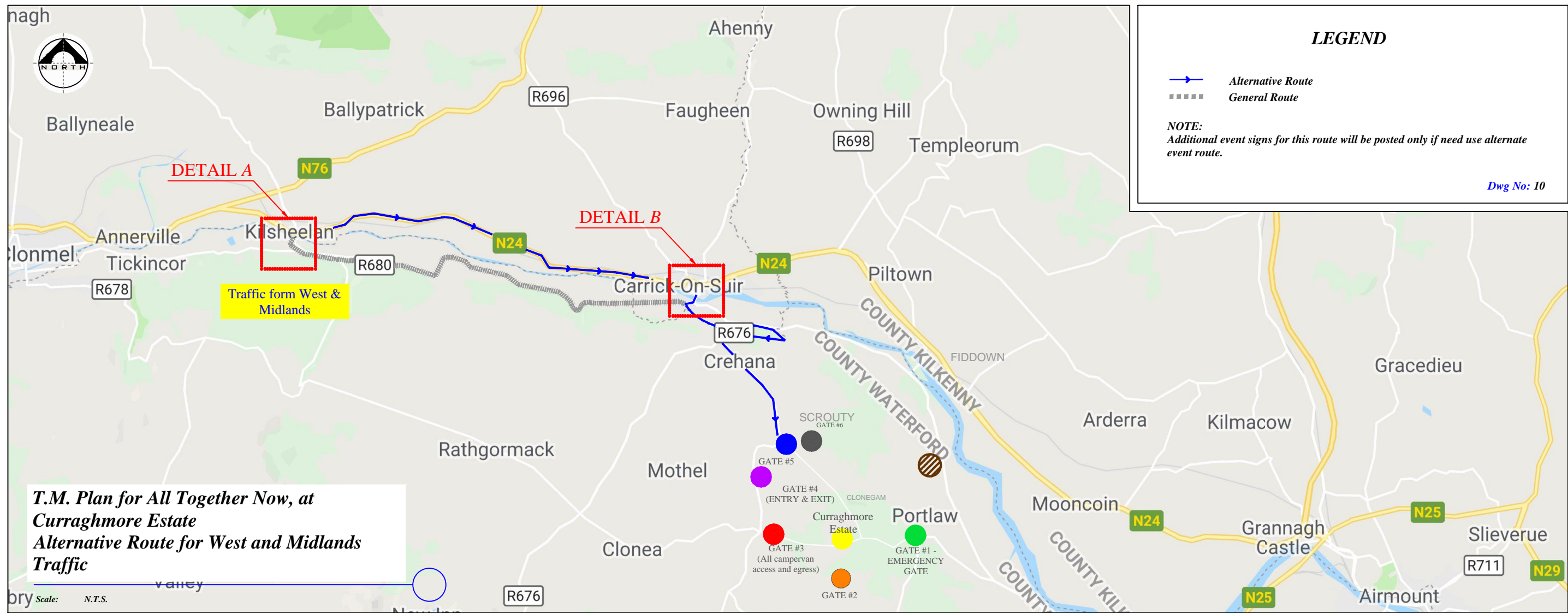
- - - - General Traffic & Family Camping
- - - - Emergency Route
- - - - Diversion Route
- - - - Buses
- - - - Drop Off / Pick up & Taxi
- Drop Off / Pick Up Area
- VMS Variable Message Sign

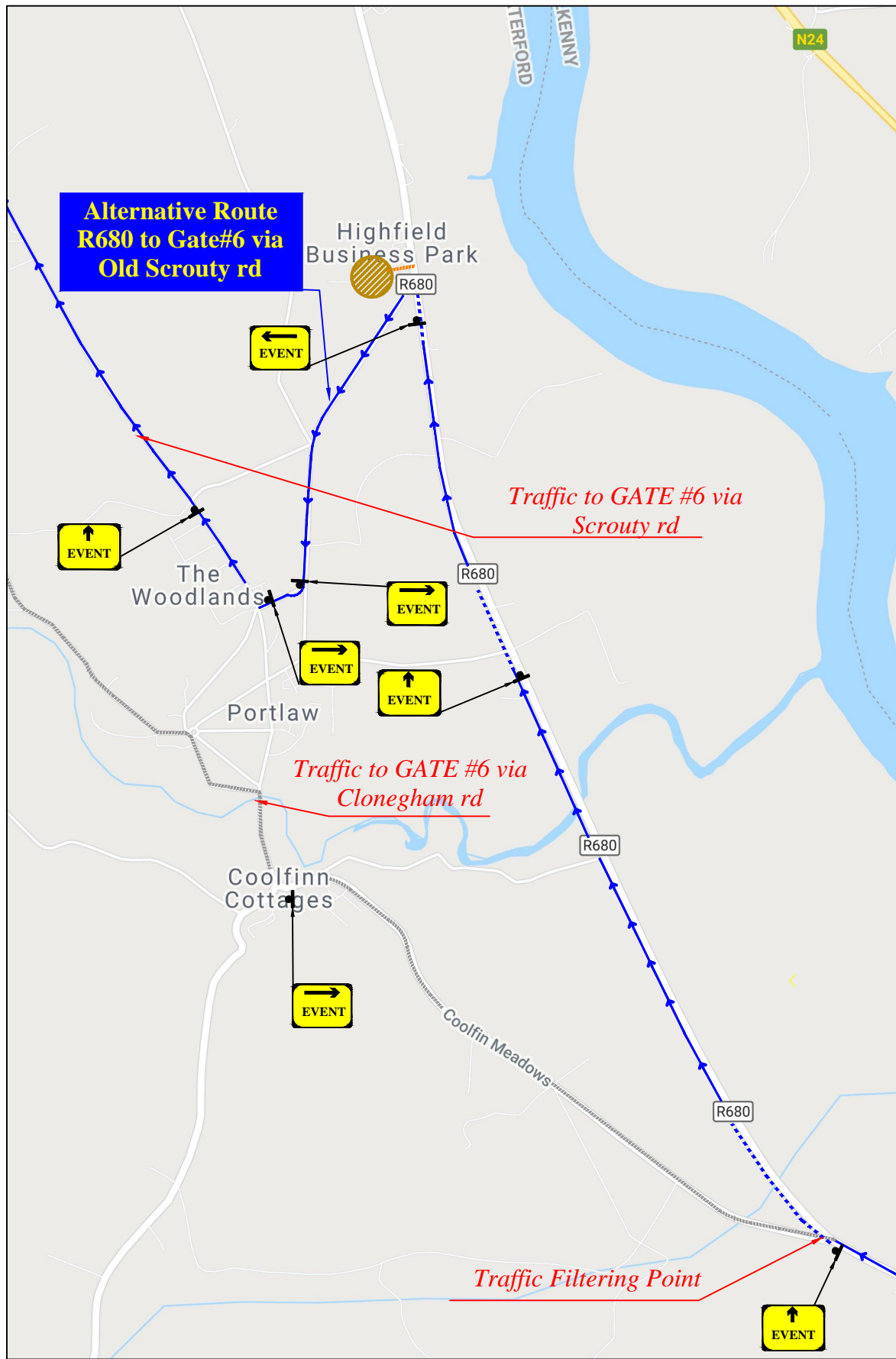
Note: Other VMS Locations will be approved on site

Dwg No: 09

T.M. Plan for VMS Locations

Scale: 1:10,000





**T.M. Plan for All Together Now, at Curraghmore Estate
Alternative Route for East Traffic**

Scale: N.T.S.

