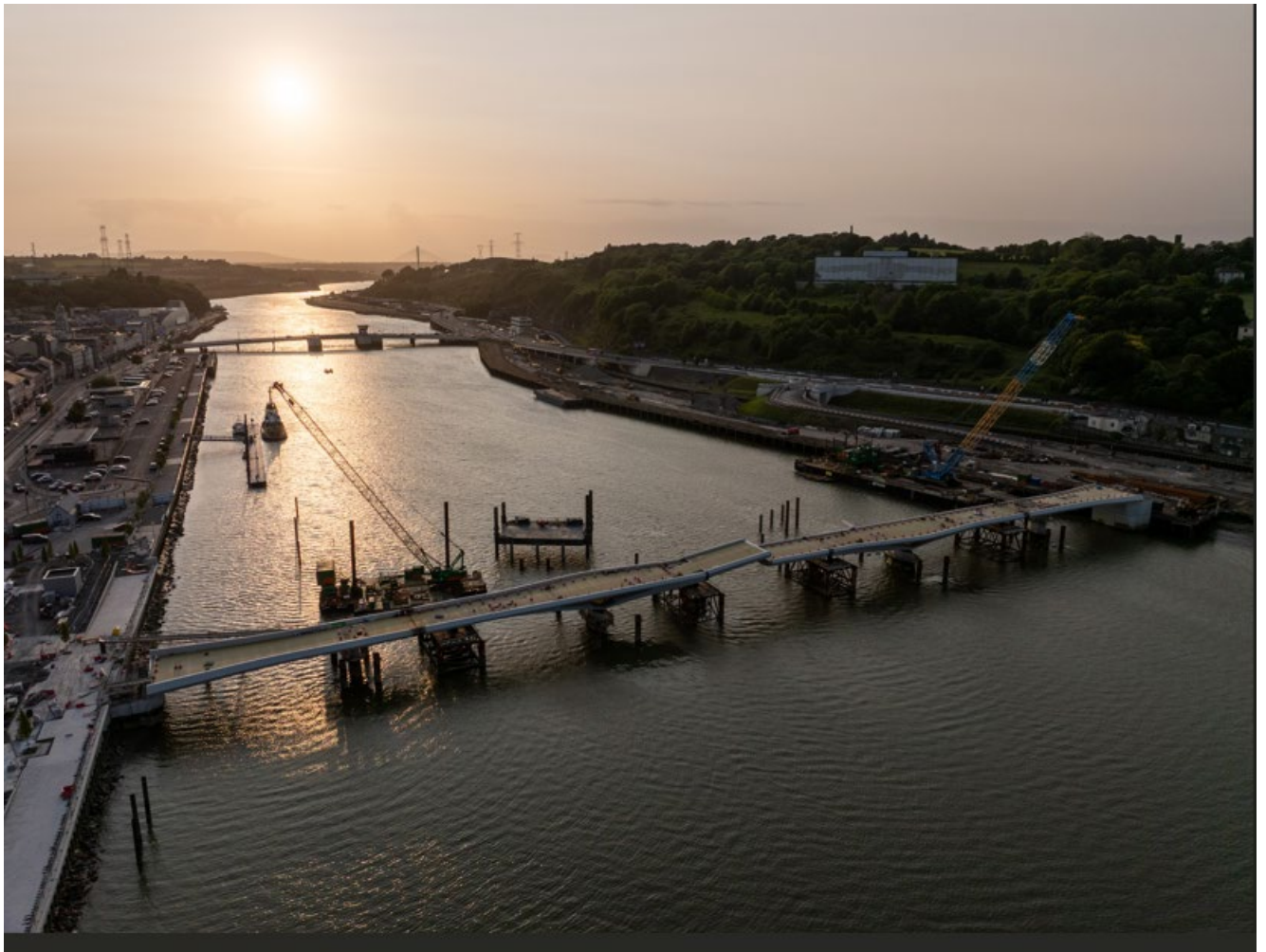


**DO: GACH BALL DE CHEANTAR CATHRACH PHORT LÁIRGE
TO: EACH MEMBER OF THE METROPOLITAN DISTRICT OF WATERFORD
Economic Development Report July 2025**

1. North Quays

The sustainable transport bridge is already becoming a significant feature on the Waterford's maritime landscape with all four bridge spans installed on the bridge substructure and temporary support frames. The activation of the bridge's mechanical and electrical units is currently ongoing. The first test lift took place on Friday 11th July, it is anticipated that the opening spans will be operational in the coming weeks.



The four bridge spans in situ in Waterford, supported by the bridge substructure and temporary support frames.

The bridge finishing works, which includes the final surfacing, lighting, street furniture, and parapet railings, will commence shortly as well as the installation of the downstream bridge pier protection system. Harcourt Developments are due to commence phase 1 of the SDZ mixed use development towards the end of 2025 and it is expected that integration works, to the north of the bridge, will be fast-tracked as part of this construction to facilitate the opening of the bridge to the public in Q4 2026.

The National Transport Authority is also conducting a feasibility study for the provision of a shuttle bus service that would connect the new transport hub on the North Quays with the South Quays and City Centre via the sustainable transport bridge.

The southern land point at the new South Plaza is also well advanced. Paving, bicycle parking and landscaping works are clearly visible within this new public realm facility, while the bus stop at Meagher's Quay / Clock Tower has been reinstated to its final position. Traffic Management measures have been transferred west of the Clock Tower to allow for utility and paving works in this area. A nighttime lane closures will take place on the South Quays from the 21st to the 25th July 2025. In advance of the works, traffic management details will be publicised on radio, to local stakeholders, on variable messaging signs and all WCCC social media channels



South Plaza with paving and landscaping works ongoing

Road infrastructural works are progressing well with the final wearing course laid on Abbey Road. Traffic management remains in place in Fountain Street and Dock Road and these works are expected to be completed this summer.



Abbey Road final wearing course complete and finishing out lighting, landscaping and greenway access

Works are continuing at the Transport hub, with glazing, internal fit out, the northern entrance and cladding progressing. The new drop of facility to the west of the station building is now emerging. It will provide set down, disabled and bicycle parking facilities as well as access to the new southeast Greenway.



Transport hub with roof glazing and planters in situ that will frame the northern entrance steps



Deck beams installed on the western footbridge that links Dock Road with the Sustainable Transport Bridge. The platforms are substantially complete and paving works are ongoing at the bus drop off facility

Works are continuing on the railway flood defence scheme where all works are being programmed in consultation with Irish Rail. The eastern flood defence sheet piles are in situ and flood defence works will extend through the front of Plunkett Station and upstream of Rice Bridge. Works include extensive trackside drainage, which will commence in July 2025. A Part 8 planning application for the pump stations will also commence this month.

The works upstream of Rice Bridge include the construction of a flood defence wall between the river and the railway tracks. This requires a very close interface with the rail tracks, and the project team is consulting with Irish Rail on options that would optimise the cost efficiency of the works while minimising disruption to rail commuters and any impacts on the city centre.

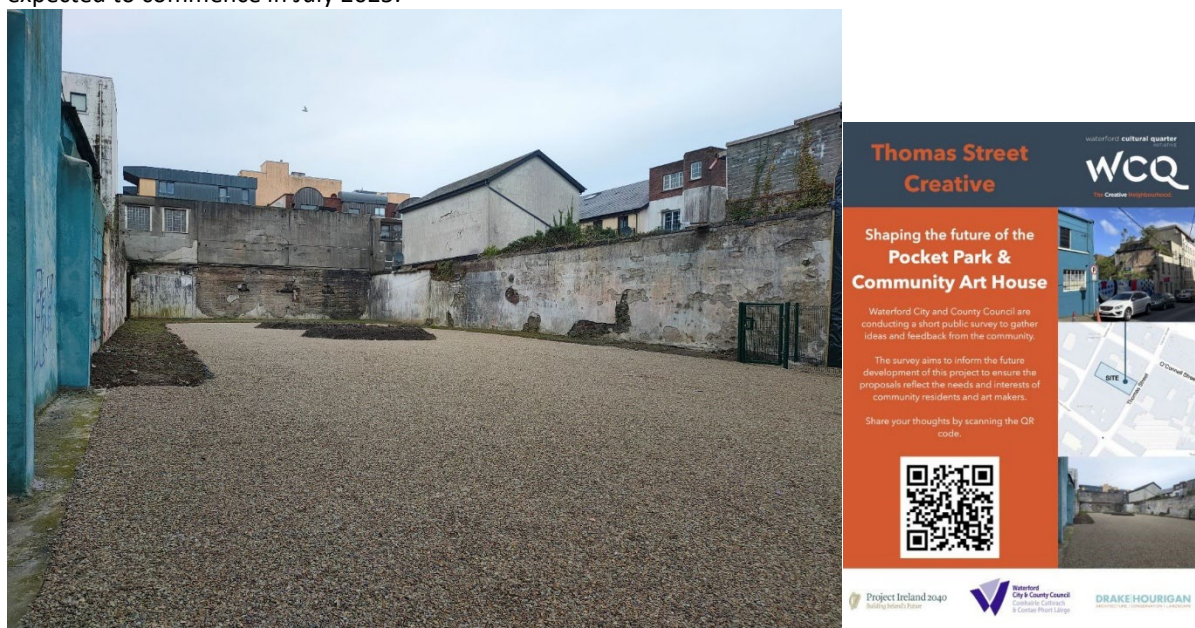
2. City Centre Regeneration URDF Projects

Munster Express (Project F & H) – The design team, led by Butler Cammoranesi Architects, are finalising the detailed design and technical specifications for the building, which involves the input of LVL timber frame specialists. The Works tender will be completed at the end of Q3.

3 & 4 Georges Street (Project B & C) – A revised Part 8 planning application for proposed office use has commenced, where plans and particulars of the proposed development are available to view on the Council website or WCCC Customer Care Offices until 15th July 2025.

Enabling Works were awarded to Alan Murphy Construction and will commence mid July 2025.

The Art House / 7 & 8 Thomas Street (Project I & J) – The consultant team, led by Drake Hourigan Architects, are completing the project design for a Pocket Park and Creative Hub, incorporating input from the community engagement process. The planning documents are currently being finalised and the Part 8 planning process is expected to commence in July 2025.



Parade Quay (URDF Projects P & Q) – Tender documents and the National Monument Ministerial Consent application are currently being prepared for the proposed housing, public realm and commercial development at 124-130 Parade Quay.

Refurbishment work to 123A Parade Quay (aka; Central Hall; URDF Project R) is ongoing and is due to open Q3 2025 and linked to the adjacent Museum of Time building.

18 Lady Lane - Enabling works are complete and concept designs are being developed in coordination with the project and funding partners for 18 Lady Lane, to create a new children's experience, Tír na nÓg, @ Lady Lane,

Waterford. A Part 8 planning application is expected to commence in July 2025. An Executive Design Team tender has been advertised and will be awarded in July 2025.

25/26 O'Connell Street (URDF, Projects E) – Access has been secured to the 19th century basement vaults within the building and investigative works are ongoing. A Part 8 Planning application is expected to commence in Q3 2025 for a Creative hub and office use.

City Hall & Bishops Palace – Re roofing and external rendering works to both buildings are continuing and works are expected to be completed during the summer 2025.

Derrick Crane – Final sampling and testing of the paints and metals are complete. The consultant is awaiting the test results before completing their assessment report.

3. Tramore

Metal Man

Tender documents for repair and conservation to the structures have been prepared and will be issued once access arrangements have been confirmed.

Tramore Water Activity Centre

Awaiting formal 'gateway approval' to proceed to Tender from Failte Ireland, delays due to ongoing discussions with the proposed eastern elevation.

4. Regional Sports Centre

Two items of work at WRSC are complete/in progress

1. **Upgrade of the Public Toilets** – New toilets are installed and in use.
2. **Upgrade of Sprinkler System** – Alan Commins Electrical Ltd commenced works Monday 30th June. New sprinkler system should be operable by mid-July 2025.

5. Trails and Outdoor Recreation

Waterford City and County Outdoor Recreation Plan

- It is envisaged that the content for the Waterford Outdoor Recreation will be finalized during July/August. The plan will be launched later in 2025 - date TBC.
- Members of the plan project team attended the National Outdoor Recreation Conference in Limerick on 26th June.

ORIS 2024/2025

WCCC awaiting outcome of funding applications submitted to DRCDG under the ORIS 2024/2025 scheme.

Outdoor Recreation Infrastructure Scheme (ORIS) 2023:

WCCC submitted a number of successful ORIS applications under the 2023 scheme with works planned to take place throughout 2025:

Measure 1:

- Biodiversity hot spot and pocket recreation area on the Waterford Greenway, Carriganore - €30,000. Work is progressing well with further landscaping and planting planned for summer 2025. Landscape contractor has been appointed and it is hoped to commence mid-August. Project to be completed before end October 2025.
- Passage East Walking Trail – steps leading towards church – path repairs, drainage, install new steps - €30,000. There are a number of challenges given the location of the pathway. Survey work has been carried out. Report and drawings for potential solution has been submitted to WCCC for approval. Awaiting cost estimate in order to have a full picture of the scope of the works required in order to make the walkway safe and re-open to the public.

Measure 2:

- Dunmore East Coastal Trail Project – Upgrade of steps at Portally Cove. Upgrade of section of trail between Dunmore East and Portally - €108,000. Drawings and tender specification currently being prepared by consultant engineer. It is anticipated these will be complete by end July 2025.

Waterford Trails

- Continuing to engage with Sport Ireland Outdoors and local trail development groups around Waterford regarding ongoing monitoring, maintenance, development and promotion of Waterford's existing recreational trail network. www.visitwaterfordtrails.com

6. Tourism

Waterford Rural Tourism Network



The Waterford Rural Tourism Network (WRTN), which includes the Copper Coast and Waterford Estuary clusters is continuing to develop. Since the beginning of 2025 the following have been delivered by Runda Hospitality & Tourism Solutions who are contracted by Waterford City & County Council and Fáilte Ireland:

- Network wide event
- The third & fourth of 5 'Learning Journeys'
- 10 in person meetings, 2 meeting per cluster (3 in-person meetings per cluster per year)
- B2C workshops
- Leave No Trace (LNT) awareness training

Before the end of the year there will be further training provided which includes:

- Leave No Trace awareness training
- An in person meeting for each of the 5 clusters
- Saleable Experience Development training
- Network wide event in November

We have great involvement from businesses across all 5 clusters but there is still an opportunity to join the network so if you are aware of any businesses, please put them in touch with Keith Murphy, Tourism WCCC.

Visit Waterford



Media:

In the month of June Visit Waterford delivered a series of paid & organic features across different media forms including print, digital & radio. This included an ad on Today FM to highlight the '*Dig into Waterford*' campaign. There was also a giveaway on the Laura Fox show, on 2FM, on the 2nd June.

A press release was distributed on the 25th June showcasing Waterford festivals this season.

The new Visit Waterford website was launched on the 26th June. The website is up to date, user friendly & engaging, it showcases everything Waterford has to offer as a global destination.

Visit Waterford presented at a webinar for Active Tourism in Ireland which was a fantastic opportunity to highlight Waterford's rich and diverse offering. This was organised through The European Sports and Wellbeing Alliance for Municipalities.

Visit Waterford were delighted to have been nominated in the '*Best Digital Marketing Campaign*' category for the Waterford Digital Awards, organised by the Local Enterprise Office. The ceremony took place in Dooleys Hotel on the 6th June.

As part of the '*Dig into Waterford*' campaign, Visit Waterford created a brand-new podcast series featuring local experts in folklore, history, and archaeology. The fourth episode is now available through the link <https://open.spotify.com/episode/0lDlckDEjtXlBsr1kuqGk7>

Membership

Visit Waterford now has a total of 71 members.

Cruise Tourism

Visit Waterford continues to work with key stakeholders in the Cruise Tourism working group. The view of this group is to co-ordinate the arrival of Cruise ships. The first ship docked in Waterford on the 1st July.