



Comhairle Cathrach & Contae Phort Láirge Waterford City & County Council

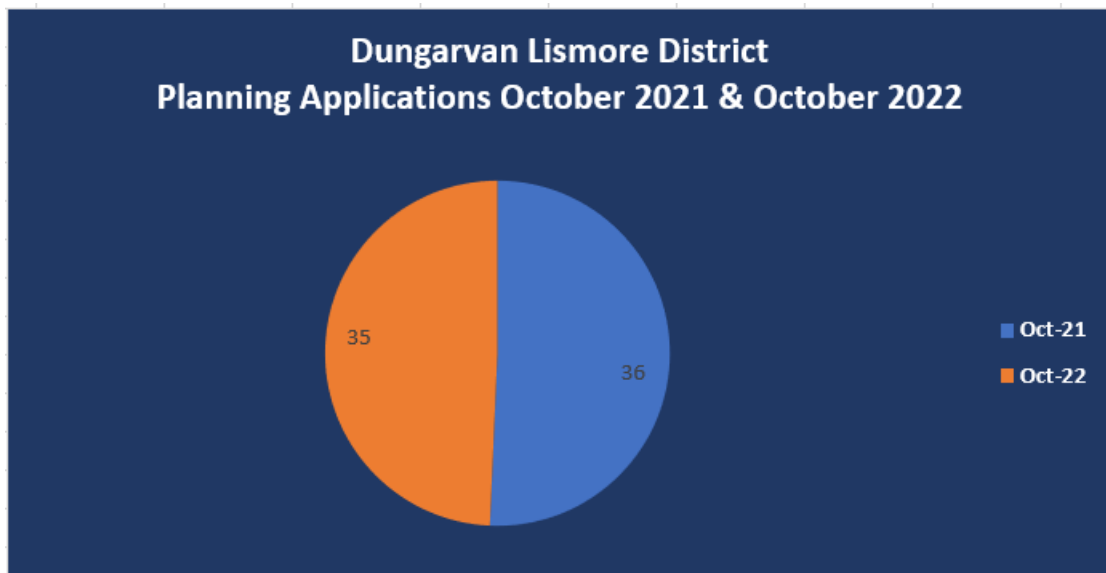
Waterford City & County Council Planning Report to Dungarvan Lismore Meeting – November 2022

DO: GACH BALL DE CHEANTAR BARDASACH DHÚN GARBHÁN/LEASA MHÓIR
TO: EACH MEMBER OF THE MUNICIPAL DISTRICT OF DUNGARVAN/LISMORE

Planning Applications Received – Dungarvan/Lismore

35 Planning applications were received in Dungarvan/Lismore in October 2022. This compares with 36 planning applications received for the same period in 2021.

A total of 343 planning applications were received in the Dungarvan/Lismore area in the year to 31st October 2022. This compares to 351 planning applications which were received up to 31st October 2021.



Forward Planning November Plenary Report

Residential Zoned Land Tax (RZLT) Draft Map of land in-scope

A draft map indicating land considered in-scope for the purposes of the RZLT has been prepared and is available to view at public service desks in Dungarvan and Waterford City and online at <http://www.consult.waterfordcouncil.ie>. Members of the public have been advised that they have until January 1st, 2023, to check and make submissions on draft maps that show lands across the city and county that will be subject to the new RZLT.

The RZLT is a new tax aimed at increasing housing supply by activating zoned, serviced residential development lands (including mixed-use lands) for housing. Greenfield and brownfield land which is identified and is zoned for housing (include land zoned mixed-use) will be subject to tax from 2024. The tax is a commitment under Housing for All, the Government's housing plan to 2030.

Persons can make written submission to address the following:

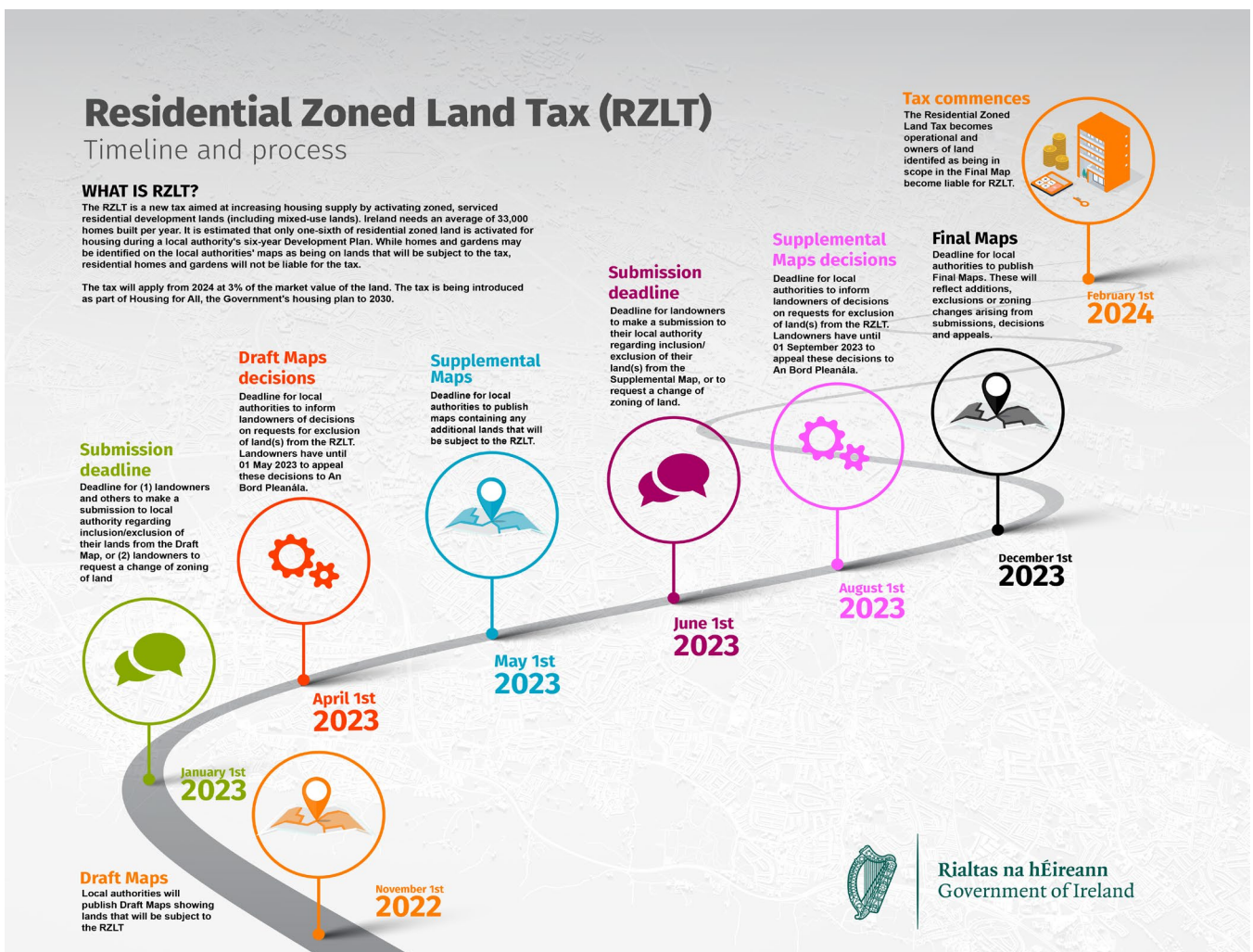
- Make a suggested correction to the Draft Residential Zoned Land Tax Map if they feel that the land included on the map does not meet the criteria, or they disagree with the date on which the maps states the land met the criteria

- Request a change of zoning of their land so that it is not subject to the tax (Any changes to land use zoning would be a matter for the plenary council to consider by way of a material variation to the development plan, where appropriate, and as such would be subject to a separate statutory procedure)
- Identify other land that should be subject to the tax

The RZLT is an annual tax, which will be first due in 2024 in respect of lands included on the final maps to be published by local authorities on 1 December 2023. The Residential Zoned Land Tax will apply annually at a rate of 3% of the market value of the land. The tax will be administered on a self-assessed basis through the Revenue Commissioners.

Homeowners will not have to pay the RZLT if they own a residential property which appears on the local authorities' relevant map, but which is subject to the Local Property Tax (LPT). If a homeowner owns such a residential property, and the land/gardens/yards attached to it are greater than 0.4047 hectares, they will have to register for the Residential Zoned Land Tax with the Revenue Commissioners, but they will not be liable to pay the tax. It will be possible to register for the tax from late 2023 onwards.

A homeowner may have to pay the tax if they own a residential property that appears on the local authorities' RZLT maps that is not subject to the LPT. A schematic and timeline of the RZLT implementation process is set out below and more information on the measure can also be found at <http://consult.waterfordcouncil.ie> or <http://www.gov.ie/rzlt>



Heritage Officer Report

Heritage Week Awards

The Copper Coast Geopark were the worthy winners of the County Heritage Award for Waterford announced at the National Heritage Week Awards by the Heritage Council in Dublin last week. The award was given in recognition of the diverse programme hosted for Heritage Week 2022 celebrating the Copper Coast's geological story, mining heritage, a coastal walk and tours of new material in their visitor centre. Following inclusion in Lonely Planet's top 100 places to visit in the world the geopark is set for a great increase in visitors next summer.



Videos on Waterford Heritage Week events from this year are available to view on;

<https://www.facebook.com/HeritageWeek/videos/2101463900035580>

and

[The Pearl Mussel a Heritage Species in Peril | National Heritage Week 13 – 21 August 2022](#)

Water Quality Regional Committee Meeting

The Nire Valley and Ballymacarbry Community Centre provided the setting for the quarterly meeting of the SE Regional Operational Committee on Water Quality on October 10th involving state agencies, local authority staff and local farmers to discuss issues affecting water quality in the South East Region and in Co Waterford.

Chaired by Director of Services, Fergus Galvin of Waterford City and County Council and supported by the Local Authority Waters Programme the Operational Committee is one of five committees which supports Ireland's efforts to address the decline in water quality and protect public health. Issues discussed at the meeting included the protection of bathing and shellfish waters and public health along the Waterford coastline and actions that Irish Water are undertaking to protect water quality. The meeting was followed by a walking workshop to the Nire Valley where the group discussed the challenges facing this sensitive landscape from agriculture, burning and outdoor recreation.

Decade of Commemorations

Research is almost complete for the GIS Story Map on Civil War events in Waterford and a new website Waterford1916to1922 is being developed which will host all material relating to the Decade of Commemorations Programme in Waterford from the past 8 years including history publications, school resources and talks by the local authority and community organisations. Documentary films on the Siege of Waterford, Liam Lynch and the end of the Civil War and internment at Ballykinlar are nearing completion and will be screened in the coming months.

Conservation Officer Report

The Built Heritage Investment Scheme BHIS and Historic Structure Fund for 2022 is concluded. WCCC received some extra funding. In all 25 projects are being supported over 2000 days of employment for various trades and skills such as joiners, thatchers, roofers, plasterers, stonemasons, leaded and stained glass specialists etc

The Guide for Medieval Waterford – walls and towers will be ready by mid November

