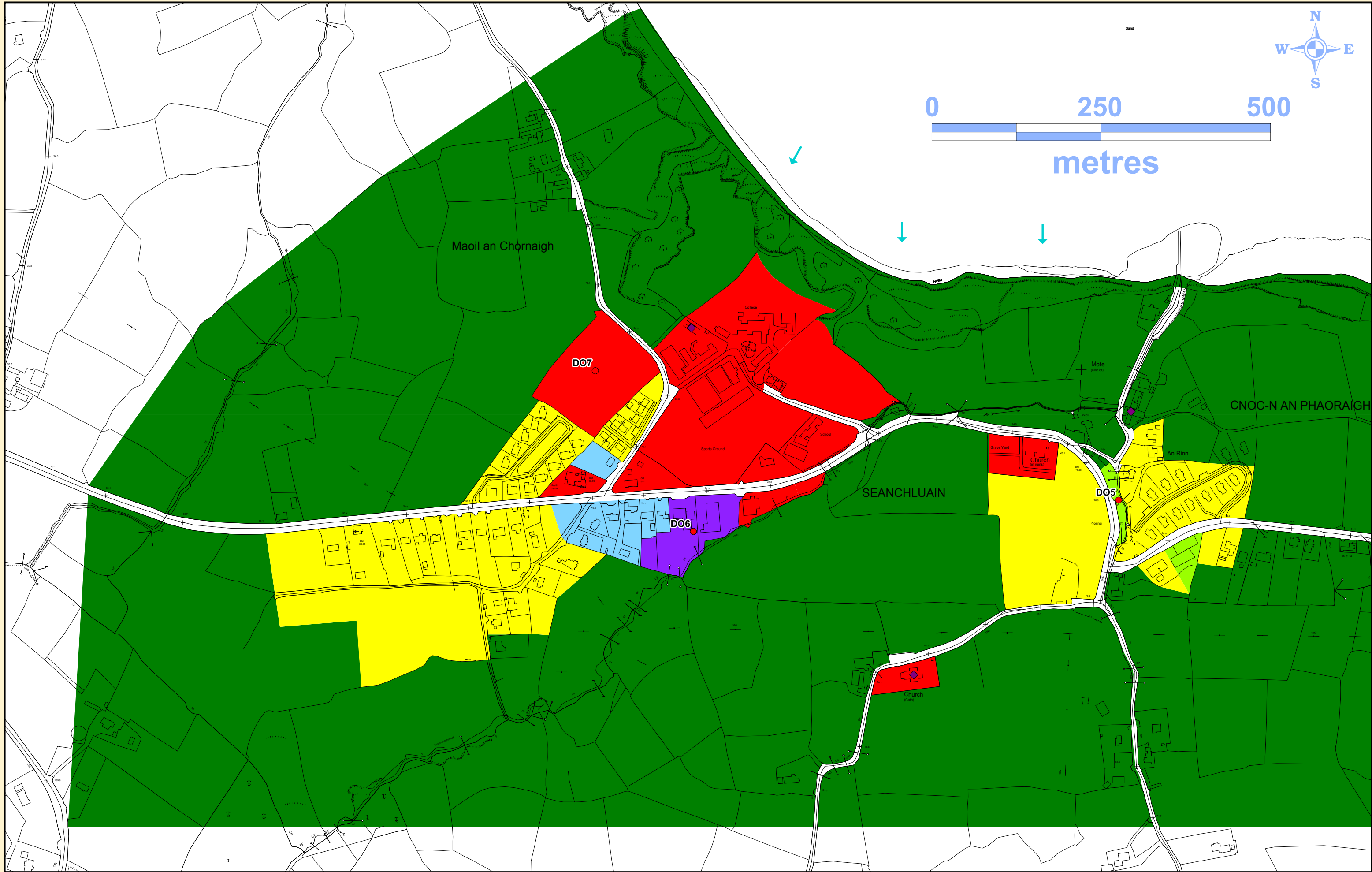


# Maoil a' Choirne



**MAOIL A 'CHOIRNE - Gaeltacht****Context**

An Rinn Gaeltacht is located on the Ring Peninsula, southeast of Dungarvan. It comprises of dispersed housing with settlement centres at Baile na nGall, Heilbhic, Maoil a' Choirne and Sean Phobail.

Maoil a' Choirne is identified in the County Development Plan as a Local Service Centre.

**Infrastructure**









**Water supply:** The public water supply has no estimated spare capacity. It is anticipated that the public water supply would be upgraded under the Water Services Investment Programme during the lifetime of the Plan.

**Wastewater:** The wastewater treatment plant serving An Rinn Gaeltacht has spare capacity. However there are intermittent difficulties with pumping stations at Maoil A'Choirne.

**Development Objectives**

- DO<sub>1</sub> It is an objective of the Council to protect and promote the linguistic heritage of the Gaeltacht through the use of occupancy conditions restricting sale or occupation of dwellings to those who have demonstrated reasonable fluency of the Irish language and/or person's native to the Gaeltacht.
- DO<sub>2</sub> Development proposals shall ensure that new development is set back to allow for the provision of new paving/footpath.
- DO<sub>3</sub> As opportunities arise, the Council shall provide footpath/cyclepaths from development boundary through the village.
- DO<sub>4</sub> It is an objective of the Council to strengthen the village core by promoting the redevelopment of underused village centre sites.
- DO<sub>5</sub> It is an objective of the Council to retain the existing trees at this location.
- DO<sub>6</sub> It is an objective of the Council to facilitate and encourage the development of new employment units at a scale appropriate to the village on this site and to promote the economic development of the Gaeltacht.
- DO<sub>7</sub> Site to be reserved to allow for the future potential expansion of the school.

**MAP LEGEND**Zoning and Principle Objectives

-  R2 – Protect amenity of existing residential development and provide new residential development – low density (clustered housing, serviced sites, large plot size).
-  Village Centre
-  Institutional, Educational & Community Development
-  Light Industry
-  Open Space and Amenity
-  Green Belt
-  Development Objectives
-  Scenic view