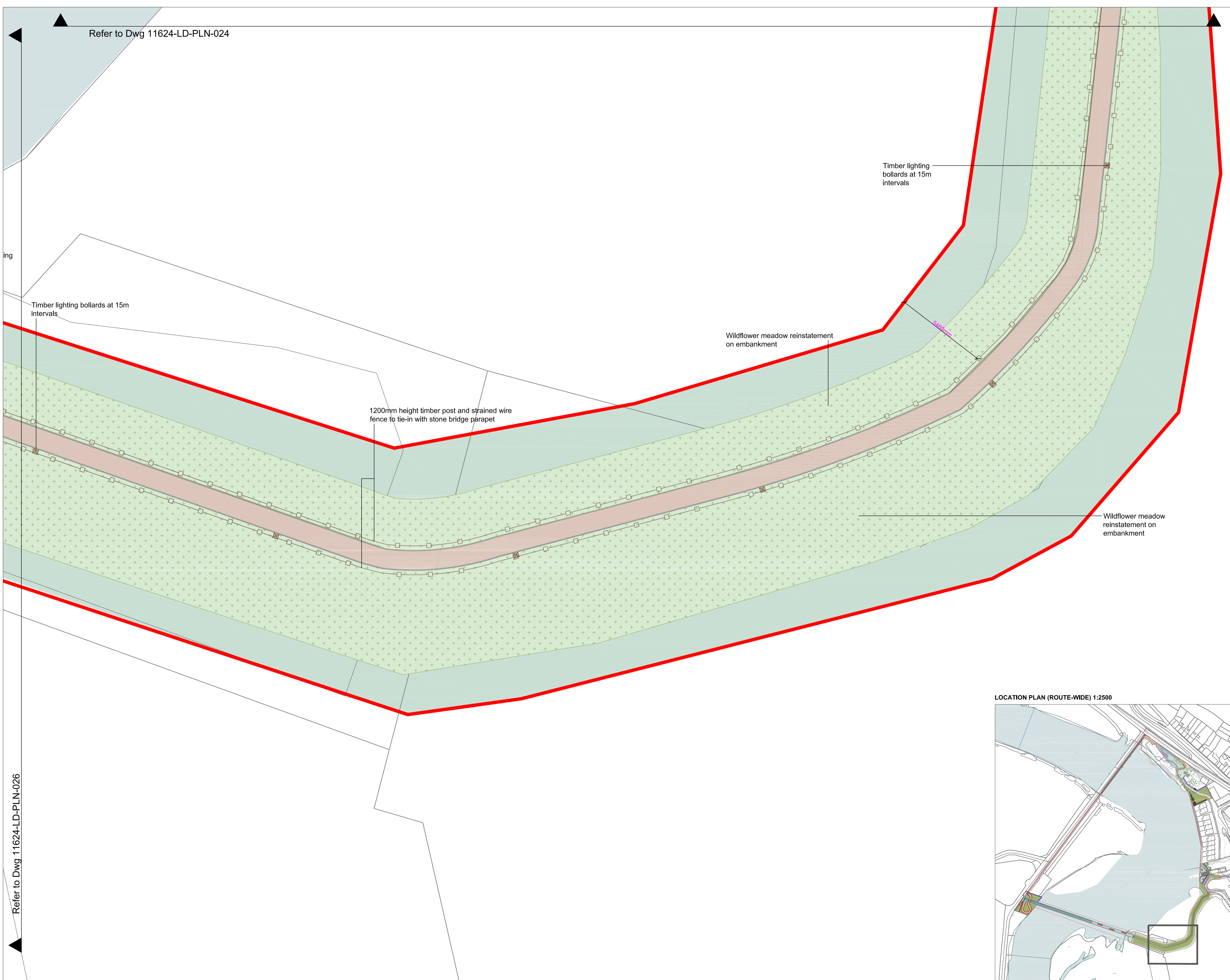


Refer to Dwg 11624-LD-PLN-024



Refer to Dwg 11624-LD-PLN-026

Notes
 Do not scale from this drawing.
 All dimensions are drawn in millimetres.
 Drawing & design copyright LUC.
 Reproduction of this drawing in whole or in part is prohibited without prior permission.

- KEY**
- Red Line Boundary
- Hardworks**
- Coloured asphalt: Buff
 - Natural stone setts: Dark Grey
 - Interpretation at threshold
- Edging**
- PCC edging: Grey
 - Steel edging planters (flush)
 - Steel I-Beam detail (inset)
- Boundaries and Restraints**
- Parapet mounted steel fin balustrade and timber handrail: 150mm height
 - Timber post and strained wire fence: 1.2m height
- Site Furniture**
- Timber lighting bollard
 - Metal finger post signage
- Softworks**
- Ornamental planting
 - Wildflower grass seeding

- Existing**
- River Blackwater
 - Key features and buildings
 - Fence line to be retained. Allowance to make good
 - Path in Mill Wheel Park to be retained
 - Wall to be retained
 - Asphalt to be retained. Allowance to make good
 - Concrete surfacing to be retained
 - Vegetation to be retained. Allowance to make good
 - Existing Tree to be retained
 - Existing Tree to be removed

LOCATION PLAN (ROUTE-WIDE) 1:2500



TOBIN CONSULTING ENGINEERS

Waterford City & County Council
 Corporate Governance & Contract Prioritisation

CYAL50233107 © Ordnance Survey Ireland/Government of Ireland

No.	Date	Description	DRN	CHK
A	12.05.22	First Issue	AR	TJ

LUC LUC Manchester
 6th Flr, 55 King Street, Manchester, M2 4LQ
 +44 (0)161 537 5960
 manchester@landuse.co.uk
 www.landuse.co.uk

Project Cappoquin Amenity Hub Walking Trail	
Client Waterford City and County Council	
Scale @A1 1:100	Status Planning
Drawing Title General Arrangement Sheet 6	
Job Nr 11624	Drawing Nr 11624-LD-PLN-025
Issue A	