

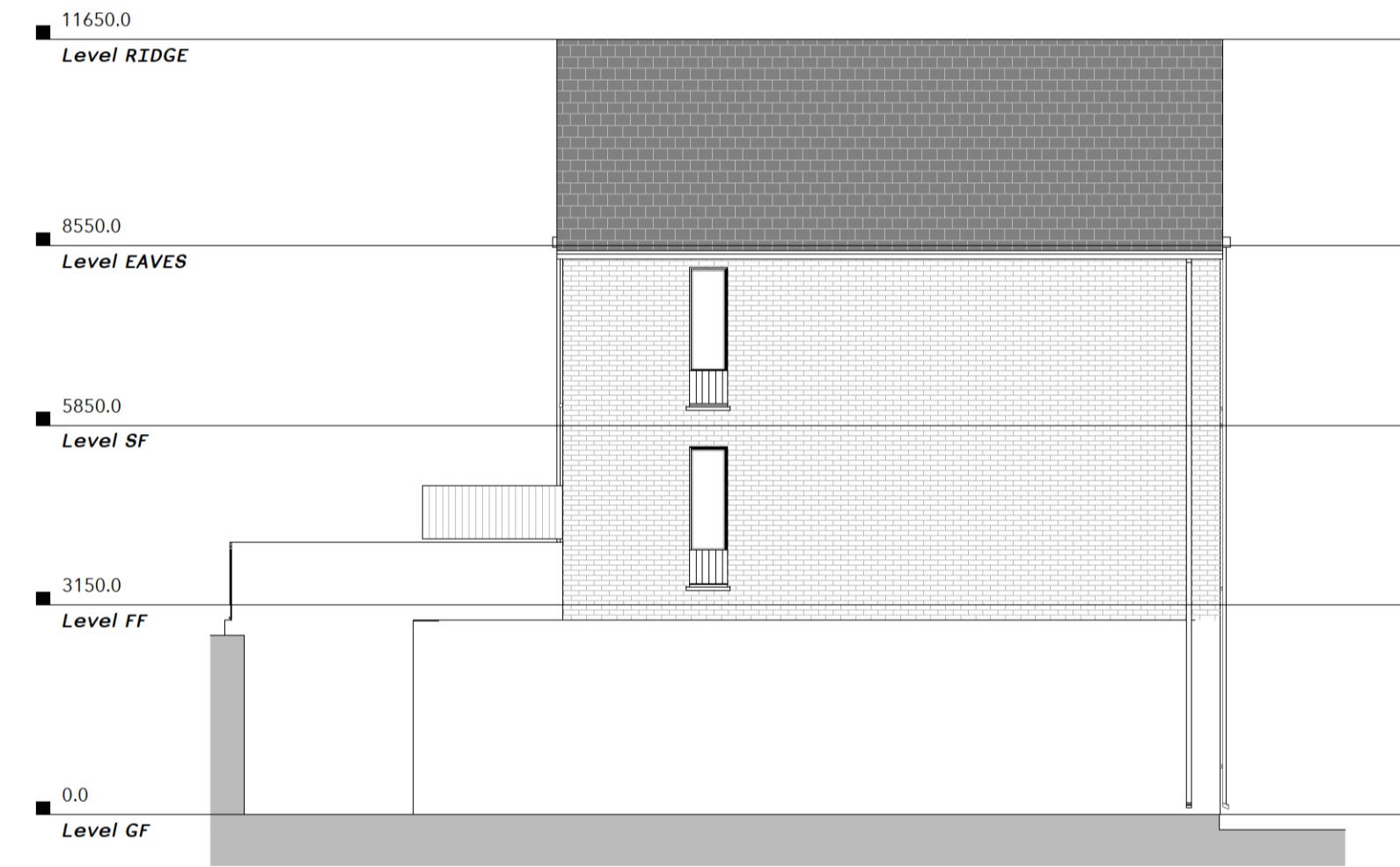
# Na Lóistí / The Lodges



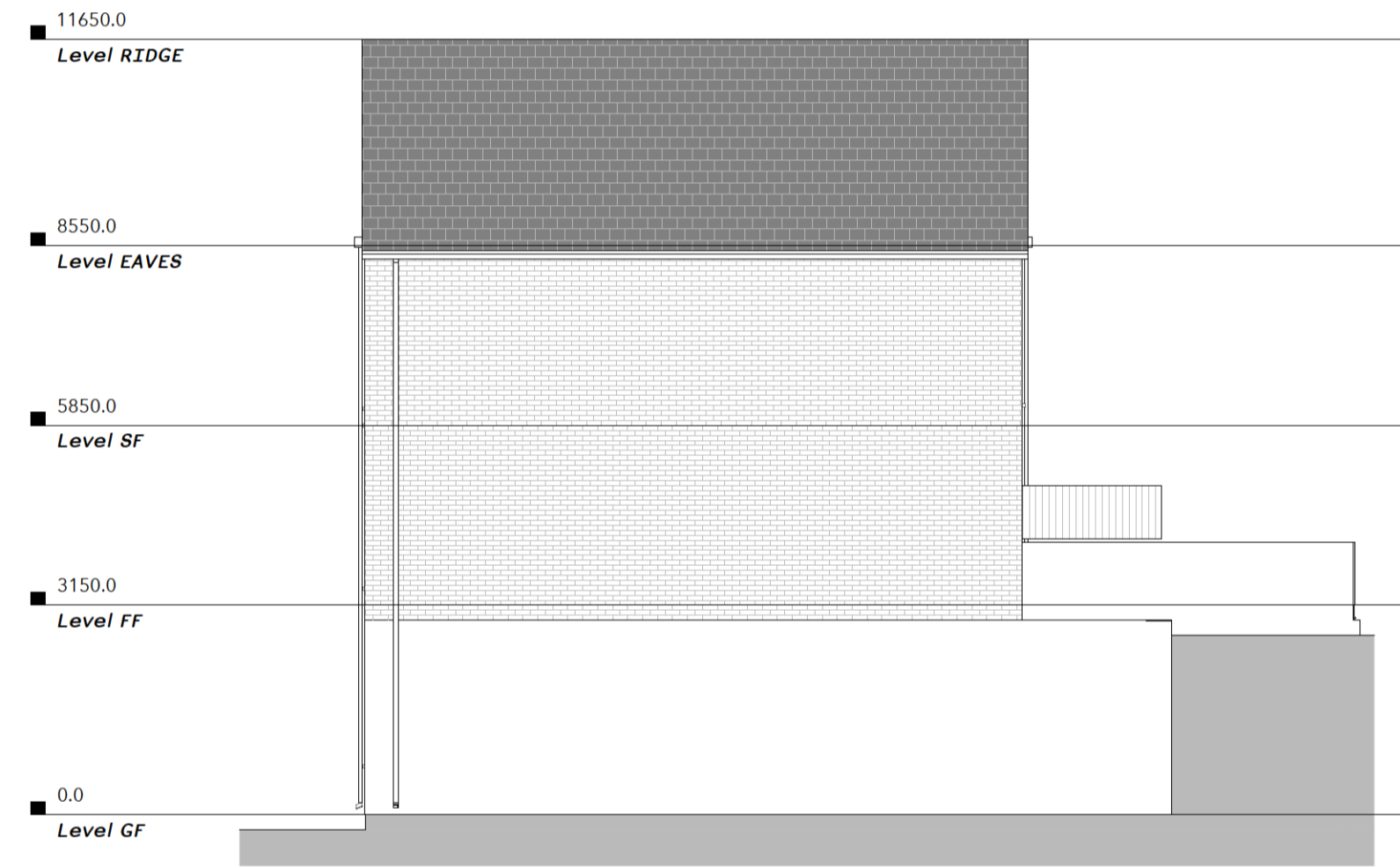
4 | SOUTH ELEVATION  
1:100



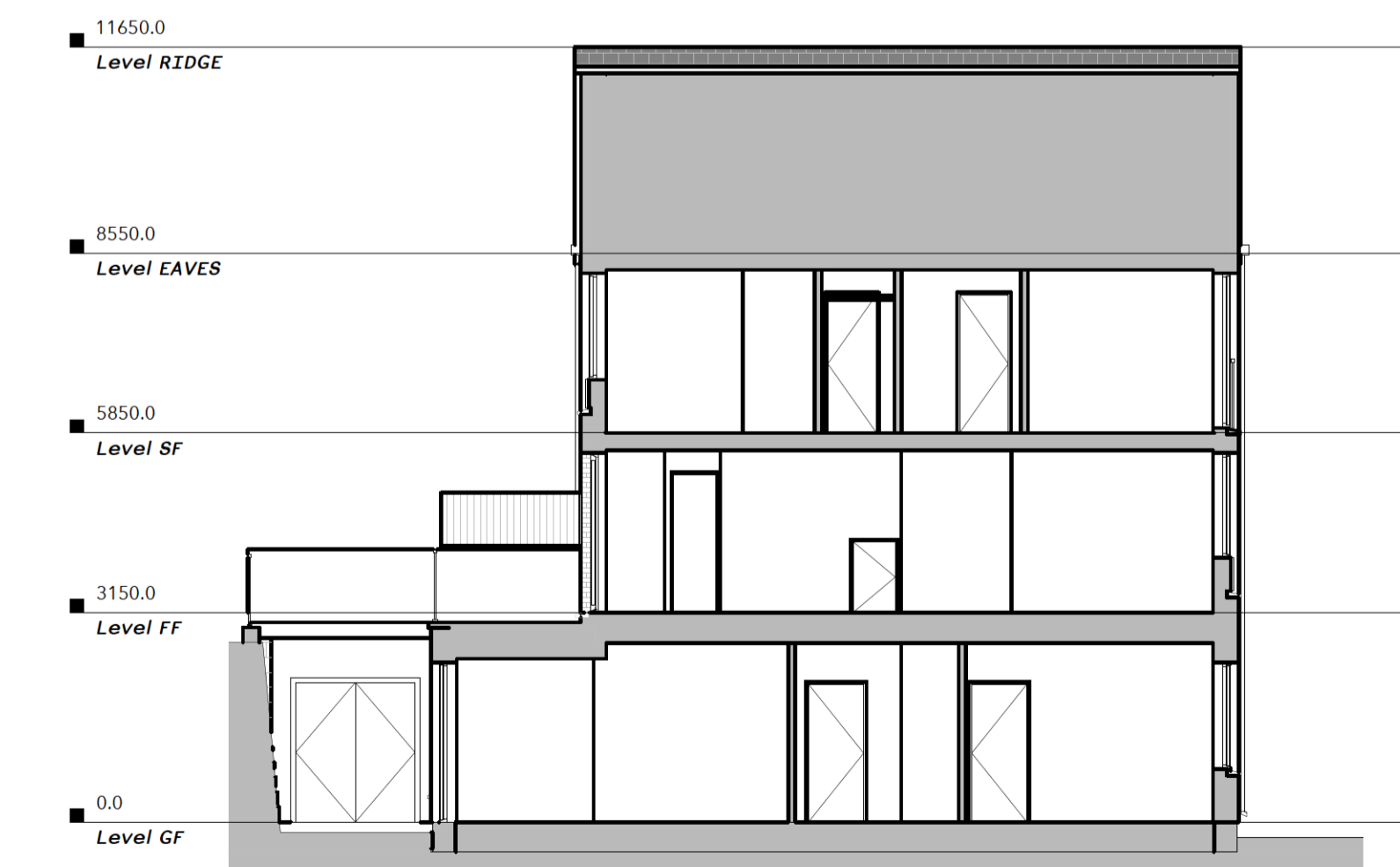
5 | NORTH ELEVATION  
1:100



6 | WEST ELEVATION  
1:100



7 | EAST ELEVATION  
1:100



8 | SECTION A  
1:100



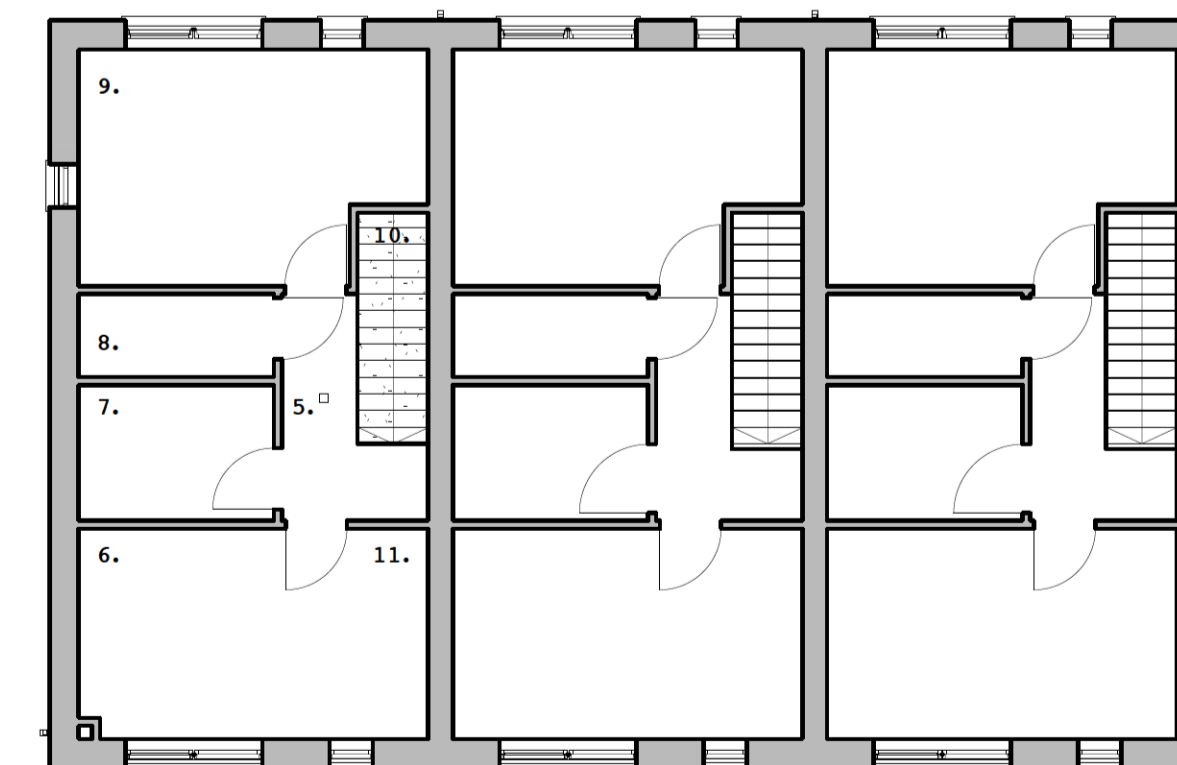
9 | SECTION B  
1:100



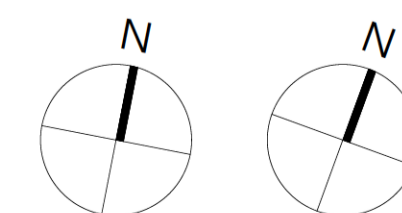
1 | GROUND FLOOR PLAN  
1:100



2 | FIRST FLOOR PLAN  
1:100



3 | THIRD FLOOR PLAN  
1:100



## General Notes:

THIS DRAWING IS NOT A COMPREHENSIVE GUIDE TO COMPLIANCE WITH THE BUILDING REGULATIONS. IT IS THE RESPONSIBILITY OF THE MAIN CONTRACTOR TO ENSURE THAT ALL MATERIALS, WORKMANSHIP, CONSTRUCTION DETAILS, AND THE CONSTRUCTION OF THE WORKS COMPLIES WITH THE DRAWINGS AND SPECIFICATIONS AND THE STANDARDS OF CONSTRUCTIONS ARE IN COMPLIANCE WITH ALL CURRENT BUILDING REGULATIONS.

CONTRACTOR TO CHECK AND VERIFY ALL LEVELS, DATUMS AND DIMENSIONS ON-SITE AND SHALL REPORT ANY DISCREPANCIES OR OMISSIONS TO ROJO STUDIO ARCHITECTS PRIOR TO START OF WORK & DURING THE CONSTRUCTION PHASE

**WORK TO FIGURED DIMENSIONS ONLY - DO NOT SCALE PRINT.**

**ALL DESIGNS SHALL BE REVIEWED PRIOR TO THE COMMENCEMENT OF WORKS BY A QUALIFIED AND REGISTERED ARCHITECT OR ENGINEER WHO WILL INSPECT THE BUILDING WORKS.**

### Unit A 1B2P

#	Name	Area	Minimum Requirement
1	Draft lobby	3.0 m <sup>2</sup>	
2	Hall	5.0 m <sup>2</sup>	
3	Bedroom 1	11.7 m <sup>2</sup>	11.4 m <sup>2</sup>
4	Bathroom	4.0 m <sup>2</sup>	
5	Storage	3.6 m <sup>2</sup>	3.0 m <sup>2</sup>
6	Living Kitchen Dining	23.0 m <sup>2</sup>	23.0 m <sup>2</sup>

Grand total: 6 50.3 m<sup>2</sup> 37.4 m<sup>2</sup>

Minimum Required Area 50.3 m<sup>2</sup> 45.0 m<sup>2</sup>  
Private Amenity Area 11.3 m<sup>2</sup> 5.0 m<sup>2</sup>

### Unit B 2B4P

#	Name	Area	Minimum Requirement
1	Draft lobby	2.5 m <sup>2</sup>	
2	Kitchen Dining Living	31.9 m <sup>2</sup>	30
3	Toilet	2.3 m <sup>2</sup>	
4	Storage	1.9 m <sup>2</sup>	6
5	Landing	3.9 m <sup>2</sup>	
6	Bedroom 1	11.3 m <sup>2</sup>	11.4
7	Bathroom	4.6 m <sup>2</sup>	
8	Storage	2.8 m <sup>2</sup>	
9	Bedroom 2	13.3 m <sup>2</sup>	13
10	Stairs	2.9 m <sup>2</sup>	
11	Storage	1.5 m <sup>2</sup>	

Grand total: 11 78.9 m<sup>2</sup> 60.4

Minimum Required Area 78.9m<sup>2</sup> 73.0m<sup>2</sup>  
Private Amenity Area 11.3m<sup>2</sup> 5.0m<sup>2</sup>

## LEGEND:

- SITE BOUNDARY
- LANDHOLD BOUNDARY
- PROPOSED BUILDING BUILDINGS
- PROPOSED METER ROOM
- PROPOSED COMMUNAL BIN STORAGE
- PROPOSED PUBLIC OPEN SPACE
- RIGHT OF WAY

PROPOSED SITE SPOT LEVELS

LOCATION OF SITE NOTICE

REFER TO ENGINEERS DRAWINGS FOR FOUL, SURFACE WATER DRAINAGE AND MAINS WATER CONNECTION LAYOUTS.

## Copyright Notes:

THIS DRAWING IS COPYRIGHT © TO ROJO STUDIO ARCHITECTS. THE REPRODUCTION OF ANY PART WITHOUT PRIOR WRITTEN CONSENT FROM ROJO STUDIO ARCHITECTS IS A VIOLATION OF APPLICABLE LAWS. YOU MAY NOT COPY, REPRODUCE, DISTRIBUTE, PUBLISH, DISPLAY, PERFORM, MODIFY, CREATE DERIVATIVE WORKS, TRANSMIT, OR IN ANY WAY EXPOSE ANY PART OF THIS SERVICE, EXCEPT THAT YOU MAY PHOTOCOPY FOR YOUR OWN PERSONAL, NON-COMMERCIAL USE.

THIS DOCUMENT AND ALL ASSOCIATED DOCUMENTS ARE PREPARED FOR A SPECIFIC SITE AND EVENT AND INCORPORATE CALCULATIONS AND MEASUREMENTS AVAILABLE FROM THE CLIENT AT THE TIME OF DRAFTING.

## Revision notes:

Rev	Description

## PLANNING PART 8

**ROJO  
STUDIO  
ARCHITECTS**

ROJO Studio Architects  
Fumbally Exchange,  
Greyfriars,  
Waterford City  
+353 (51) 51 38 68  
info@rojo-studio.com  
www.rojo-studio.com

Projects	Clients	Purposes
Na Lóistí/The Lodges, Fountain Street	Waterford City and County Council	PLANNING
Drawing Titles	Dates	Drawing Nos
UNIT A&B Duplex	2021.06.03	A151
RIAI	Project Nos	Revs
2021 1 2021 03	WCC2FS	

