



DEERPARK

WILLIAMSTOWN, WATERFORD

Affordable Luxury Living



SITE LOCATION





SITE PLAN





SPECIFICATION

EXTERNAL FINISHES

- Elegant, low maintenance, high quality elevations comprising of brickwork and painted rendered finishes.
- 'Passive House' insulated, double glazed windows from Munster Joinery - windows are filled with Argon to reduce heat loss.
- Low maintenance PVC fascia, soffits and gutters throughout.

INTERNAL FINISHES

- Walls are skimmed and painted with a stylish, sophisticated neutral colour throughout.
- Ceilings are skimmed and painted white.
- Doors, stairs, skirting and architraves painted white.
- High quality contemporary style doors.
- Brushed chrome ironmongery throughout.

ELECTRICAL

- Generous electrical spec
- High speed broadband
- Wired for an intruder alarm
- Smoke alarms
- Mechanical Ventilation System (MEV) installed
- Wired for an electric car charger

FLOORING

- Carpets to stairs, landing & bedrooms
- Tiling - to floors & shower enclosures in en-suites & main bathroom

UPGRADED HEATING SYSTEM

- Air-To-Water Heat Pump - the most energy efficient on the market

BATHROOM AND EN-SUITES

- Modern bathrooms and en-suites fitted with high quality sanitary ware

KITCHENS & WARDROBES

- Contemporary style kitchen
- High quality A-rated appliances comprising of a oven, hob and a fridge freezer
- Wardrobes with ample hanging rails to all bedrooms





FALLOW (Type A)

3 Bedroom - Semi Detached Dual - 114.4sqm / 1,231sqft



GROUND FLOOR

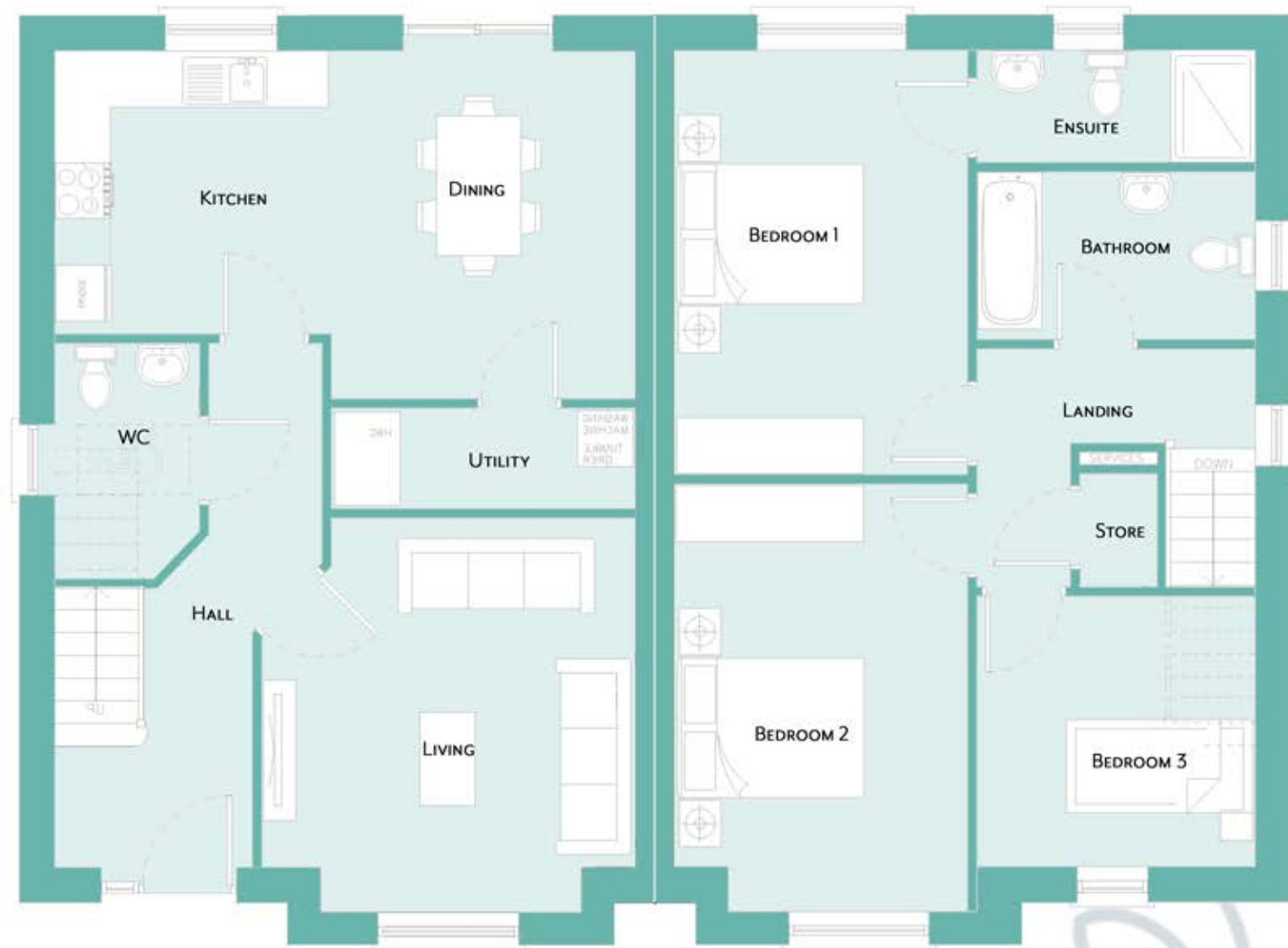
FIRST FLOOR

PLEASE NOTE: ALL DRAWINGS ARE INDICATIVE & FOR ILLUSTRATION PURPOSES ONLY. SPECIFIC DETAILS MAY VARY.



FIA (Type B)

3 Bedroom - Semi Detached - 111.4sqm / 1,199sqft



GROUND FLOOR

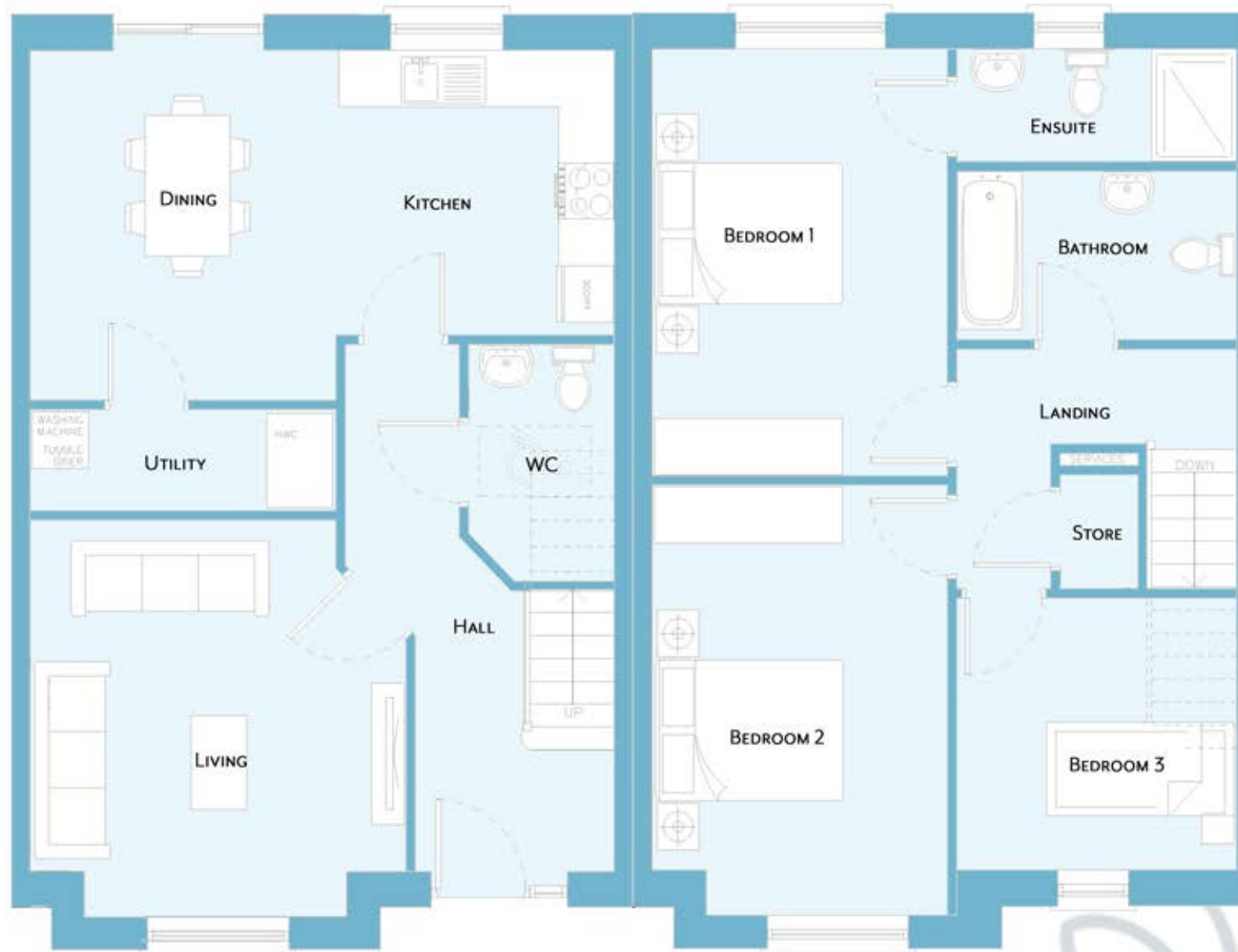
FIRST FLOOR

PLEASE NOTE: ALL DRAWINGS ARE INDICATIVE & FOR ILLUSTRATION PURPOSES ONLY. SPECIFIC DETAILS MAY VARY.



FAWN (Type B Terrace)

3 Bedroom - Mid Terrace - 111.4sqm / 1,199sqft



GROUND FLOOR

FIRST FLOOR

PLEASE NOTE: ALL DRAWINGS ARE INDICATIVE & FOR ILLUSTRATION PURPOSES ONLY. SPECIFIC DETAILS MAY VARY.



W: www.deerparkwaterford.ie

E: sales@deerparkwaterford.ie

T: (051) 875409

Instagram: [@deerparkwaterford](https://www.instagram.com/deerparkwaterford)

Facebook: [@deerparkwaterford](https://www.facebook.com/deerparkwaterford)